



**ANNUAL REPORT**  
**PARKS, CEMETERIES AND PLAYGROUNDS**  
**DEPARTMENT**  
**CITY OF CALGARY**  
**1951**





## ROYAL VISIT



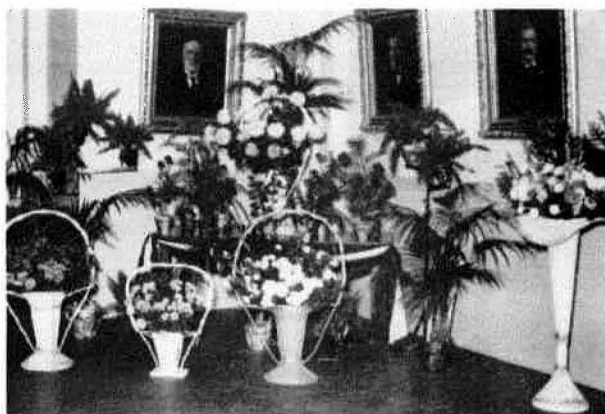
---

THURSDAY, OCTOBER EIGHTEENTH

---

NINETEEN HUNDRED AND FIFTY-ONE

---



INDEX

All Parks .....	33-41, 56 & 73
Auto Maintenance .....	70
Band Concerts .....	52
Boulevards .....	67
Cemeteries .....	32 & 68
Credits to Estimates .....	76
Floral Displays .....	12
Greenhouse plants .....	4
General Revenue Statement .....	75
Hillhurst Park .....	36
Maintenance of Tools .....	71
Memorial Park .....	37
Mewata Stadium .....	28 & 66
Municipal Swimming Pool .....	25 & 67
Mewata Park .....	28 & 66
Municipal Golf Course .....	28-31 & 65
Nurseries .....	3 & 70
Park Facilities .....	56-59
Playgrounds .....	46 & 72
Playground Facilities .....	60-64
Prince's Island .....	38
Recreation Division, Activities .....	44
Recommendations .....	43
Riley Park .....	39
Rinks .....	49 & 72 54, 55
Reader Rock Garden .....	12 & 68
Salaries .....	72
Stationery .....	73
Sundries .....	71
Summary of Appropriations & Expenditures .....	74
Staff .....	77
St. George's Island .....	15
Trees and shrubs .....	3
Zoo .....	15 & 24

CITY OF CALGARY PARKS DEPARTMENT

ANNUAL REPORT - 1951.

To His Worship, Mayor D. H. Mackay, Commissioner V. A. Newhall,  
and Members of City Council:

Ladies and Gentlemen:

I would like to submit my annual report on the activities of the Parks, Playgrounds and Cemeteries Department of the City of Calgary.

In this department we are, to a great extent, at the mercy of the weatherman. This year, unfortunately, he played havoc with many of our floral displays and the cost to the department in flowers and rare specimens of trees and shrubs was considerable. The late April frosts caused many of the choicest trees and shrubs to die down; however, these should make a comeback in another year. The lawns throughout the parks system also suffered a severe setback, but through the expert care of our gardeners, recovery has been quite amazing.

The bedding-out of annuals was commenced on June 5th, but due to the inclement weather, it was necessary to halt the work. When bedding-out was finally finished, at the end of June, it was estimated that it had been necessary to replant twice a considerable number of the formal beds throughout the entire system.

Again in July the perennials and young shrubs were severely damaged because of the hail and heavy rains, but fortunately, towards the end of August our weatherman changed his pace, and through almost the entire month of September, Calgarians were able to enjoy the floral displays, even though a month late.

In spite of the freak weather experienced, 1951 saw another year of expansion and development in all phases of the department's work.

A rather interesting experiment was attempted in the development of the Mission Park playground. This area, comprising half of a city block, was graded, loamed and seeded to grass, with the surface level of the playground lowered and the sides built up, the purpose being to prevent water from the melting rink from overflowing into the lane and on to private property. It is too early yet, however, to predict the success of this idea.

Glengarry Park Playground, south of the library, was terraced and seeded to grass, and now, as in future years, meets the recreational requirements of a great number of children from the many new homes in this area. This park is now a combination floral and playground area, thus offering the citizens of the district both beauty and facilities for relaxation.

Another large play park is the Richmond District playground, which is approximately a block in area. Work done this season by the department consisted of grading, levelling and dyking, but due to unfavorable weather conditions, we were unable to complete the loaming and seeding. It is our plan, however, to have this project completed this coming year.

Final work on the Earl Grey playground project was completed in 1951 with the loaming and seeding of the east baseball diamond, an area of approximately three-hundred square feet.

The Renfrew playground was graded and dyked. This large park serves as a hockey rink during the winter months, and will provide an excellent play area for this congested district.

The region south of the Booth Memorial Home also was levelled and dyked, but here again it was impossible to complete the loaming and seeding because of climatic irregularities.

Bowview playground was at first a source of difficulty because of the gravel bed upon which it is situated. After this was overcome, we top-dressed the area, using a clay base, and it is now making an excellent skating and hockey rink for the residents of this section.

New Rosedale, a playground at 13th Avenue and 9th Street Northwest, was levelled and seeded. The community is building a very lovely community hall and it is felt that this playground and community centre will be of great benefit to this district.

A portion of the park in the Elboya suburb underwent development from a mass of tangled underbrush to a spacious ball park and play area during the past year. This provides the children of this rapidly growing district with both summer and winter recreation facilities. This coming season it is our plan to have the area loamed and seeded.

This past season, we developed in all, some partially and some completely, nine large playareas, which is definitely an increase over our 1950 realization. It seems that there can never be too many floral parks, and it is certainly a pleasure to receive inquiries concerning the development of new ornamental areas. It is felt that these add a great deal to the overall attractiveness of our city.

Renfrew Park, approximately one and one half acres in size, was graded, loamed and seeded in preparation for the cutting out of flower beds and the planting of trees and shrubs in the spring. This area promises to be a distinctive beauty spot in another year or two.

Levis Avenue Park in South Mount Royal is a triangular park, and although the seeded portion was washed out on two occasions, a fair sward of grass was obtained. The flower beds have been cut out in anticipation of spring planting.

This department was very proud to have had a share in contributing in the matter of landscaping of the grounds at the new Red Cross Crippled Children's Hospital. The Society provided the materials and the city donated the labor to this most worthy project. It is hoped that the little patients will enjoy the flowers, grass and play area, when all is fully developed.

Another area deserving of comment is a strip of ground 75 feet wide along 25A Street Southwest, which was bulldozed in preparation for development into a floral park.

Trees, shrubs and flower beds have been set out in the floral area of Winston Heights Park. This is in a newer district of veterans' homes, where an ornamental park will be a future asset to the district.

A major step forward in the progress of the department was the acquisition of the city greenhouses from the former lessee. They are now being taken care of by city gardeners, and the plan seems to be developing satisfactorily.

The visit of Her Royal Highness, the Princess Elizabeth, and the Duke of Edinburgh was an interesting highlight of this year's activities. The department had the honor and pleasure of staging an exhibit of potted plants and cut flowers for the civic reception in the Council Chambers at City Hall.

### TREES AND SHRUBS:

A supply of new trees and shrubs was purchased for the civic nursery last season to replenish stock which was used as replacements in the various parks, cemeteries and boulevards. 200 roses were purchased from Messrs. Eddie and Sons, of Vancouver, and were later allocated to Memorial Park as replacements. Unfortunately, the severe frost late in the season killed quite a number of these. 200 Native Spruce were obtained from Mr. Gates, of Calgary, and were distributed immediately to their permanent positions throughout the parks system. Approximately 100 Green Ash and 100 Elms were purchased from the Prairie Nurseries, Saskatchewan. These were used chiefly for planting and replacements on the new boulevards. The 700 Native Birch, which we procured from the Lacombe Nurseries were distributed throughout the parks and Cemeteries, and were also used in our by-law work on boulevards.

The above mentioned trees and shrubs, and many more from our own Nurseries' stock were planted in their permanent positions in our parks system, making a total of 1,610 shrubs and 1,622 trees.

### NURSERY:

Another year of extensive planting, including trees, shrubs and perennials, has depleted our nursery stock considerably, and in addition so many of our trees and shrubs needed to be replaced as a result of the severe storms and frost that demands on our stock of seedlings and cuttings were very heavy. It is becoming increasingly difficult to keep our nursery stocked at all times with the desired trees and shrubs. Cuttings which were set out this past spring, while in the budding stage, were damaged by hail or frost, resulting in many losses. However, we have now managed to replenish our stock with a quantity of very young plants, which should be ready for shipping out to the different parks in two years' time.

A shipment of bulbs was received from Holland last autumn, but unfortunately we were unable to get the desired number planted before the early frost and snow arrived. In spite of the short season, we were able to plant with bulbs the City Hall Gardens, Memorial Park and a large bed on Elbow Drive.

A total of 3,000 perennials were issued from the civic nursery this season, and in addition 1,622 trees and 1,610 shrubs were distributed to the various parks, cemeteries and boulevards.

City Greenhouse, Nursery: Considerable damage was caused by hail to the City's greenhouses, about 700 panes of glass requiring replacement last fall. The interior of the greenhouse also was in a deplorable condition: the benches and much of the plumbing had to be replaced or repaired. Also all steel and woodwork was painted with a coat of silver enamel paint.

The greenhouses were taken over by the Parks Department last October, from the former lessee, and the stock propagated from his stock until the end of the year included 4,000 Geraniums, which will be distributed throughout the parks system next spring.

City Greenhouse, Rockery: The department grew many varieties of plants at the Rockery during the year, which were later shipped to the various parks, and also the Electric Light and Waterworks Departments, all cemeteries, Crescent Park Rockery and the Reader Rock Garden.

Following is a report from our Nursery foreman.

Perennials grown from seed:

Name of plant (Species)	(Variety)	Number planted
Silene	Schafta	40
Adonis	Autumnalis	16
Anchusa	Italica Lissadell	22
Aquilegia	Jaetsehau	90
"	Mixed	12
"	Rosea	120
"	Long spurred Hybrids	40
Auricula	Giant Mixed	35
Campanula	Rockery Fragilis	80
"	Persicifolia White	30
"	Persicifolia Blue	16
"	Media Mixed	15
Chrysanthemum	Perennial Conqueror	240
"	Indicum Mixed	105
"	Maximum	120
"	Perennial White	120
"	Korean Hybrids	9
Helethum	Pumilum	80
Heuchera	Sanguinea	8
Inula	Grandiflora	15
Lobelia	Cardinalis, Queen Victoria	35
Lychnis	Arkwrighti	130
Poppy,	Iceland, Giant Coonar,	
Pyrethrum	Double	40
"	James Melway	22
Scabiosa	Caucasica Blue	3
"	" Alba	6
Thalictrum	Deperocarpum	25
Yucca	Alaefolia Variegata	24
Allium	Angalosum	80
"	Azureum	30
"	Tibeticum	80
Agrostemma	Flos Jovis	40
Anemone	Sylvistris	80
Aquilegia	Juconda	160
"	Emperor Mixed	40
"	Long-spurred Yellow	80
"	Alpina	25
"	Crimson Star	65
"	Mrs. Scott Elliott Hybrid	80
Alyssum	Saxatilis	40
Aster	Alpina	80
Armeria	Maritima Carmina	9
Campanula	Niva Alba	25
"	Persicifolia	80
Cheiranthies	Allconii	240
Cytisus	Decumbens	9
Digitalis	Lutea	12
Dodecatheon	Hendersonii	80
Fritillaria	Pallidiflora	80
Gentiana	Straminea	35
"	Andrewsii	35
Heracleum		56
Feuchera	Sanguinea	80
"	Richardsoni	80
Inula	Glandulosa	80
Iris	Siberica	11
Liatris	Ligulestylis	60
Lilium	Willmottiae	20
Lychnis	Viscaria Splendens	40

Lychnis	Coronaria	40
Lythrum	Lady Sackville	160
"	Virgatum	160
Meconopsis	Baileyi	20
"	Sinuata Latifolia	80
Megasea	Cordifolia	80
Myosotis	Blue Spire	25
"	Mixed	240
Anthericum	Liliago	200
Dodecatheon	Jeffereyii	150
Michaelmas Daisy		125
Paeony	Woodwardiana	70
Primula	Cashmeriana	80
Trollius	Europaeus	120
"	" Superbus	280
"	Ledebourri	120
"	Golden Wave	80
"	Thomas S. Ware	400
Asyneuma	Lemonifolium	30
Erigeron	Caespitosi	100
Delphinium	Chinensis	100
"	Calahad	18
"	Violet shades	4
"	Pacific Giants Mixed	25
Pentstemon	Heterophyllus	100
Potentilla	Rupestris	100
"	Tridentata	16
"	Atrosanguinea	20
Trollius	Orange Princess	42
Asphodelus	Albus	10
Androsace	Sarmentosa	3
Campanula	Velutina	70
"	Garganica	80
Cistus	Albidus	48
Dianthus	Caesius	40
"	Deltoides	80
"	Laricifolius	25
"	Nitidus	10
Erinus	Alpenus	80
Erodium	Manescavii	8
Euphorbia	Helioscopia	4
Geranium	Robertianum	11
Hunnemannia	Fumariaefolia	20
Iris	Delavoyi	51
"	Missouriensis	4
"	Spuria	24
Lupinus	Orantus	6
"	Micranthus	20
"	Douglasii	16
Meconopsis	Horridula	60
Oenothera	Glauca	80
"	Pumila	50
"	Cheiranthifolia	100
"	Odorata	20
"	Biennis	25
Papaver	Pelosum	5
Platycodon	Grandiflorus	15
Platystemon	Californicus	14
Potentilla	Tridentata	16
"	Atrosanguinea	20
Ranunculus	Aconitifolius	6
Rosa	Nitida	11
"	Spensosissima	6
"	Huronis	4
Salvia	Officinalis	20
"	Verbenaca	15
"	Vergata	56
Saponaria	Cerastioides	40
Sedum	Oppositifolia	15
Sidalcea	Candida	5
"	Hendersonii	25
"	Neo Mexicana	10



Sidalcea	Malvaeflora	6
Sisyrinchium	Californicum	30
"	Striatum	54
Silybum	Marianum	4
Oenothera	Lamarckiana	40
"	Triloba	120
Papaver	Nudicaule	240
"	Oriental	240
Pentstemon	Alpinum	6
"	Grandiflora	12
Phacelia	Sericea	80
Phlomis		80
Polemonium	Holle	40
Primula	Auricula	70
"	Cashmeriana	35
"	Chunginensis	80
"	Cockburniana	80
"	Cortusoides	320
"	Stewartii	70
"	Vertchii	40
Verbascum	Phoeniceum	60
Viola	Bowles Black	32
Saxifraga	Decipens Atrosanguinea	35
Silene	Caucasica	80
Verbascum	Chaixii	115
Dianthus	Deltoides	180
Aquilegia	Longissima	80
"	Long-spurred Mixed	65
Aster	Purdonii	40
Calceolaria	Scabiosaefolia	80
Dianthus	Alpinus	35
Digitalis	purpurea	80
Lavatera	Trimestris	25
Meconopsis	Horridula	32
Trollius	Ledebouri	180
Primula	Japonica	40
"	Mooreana	160
"	Pulverulenta	80
Viola	Cornuta Alba	80
Canterbury Bells	Mixed	160
"	White	240
"	Rose	120
Lupinus	Russelii	190
Primula	Bardsfield	160
Draba	Alpina	80
Delphinium	Pacific Giants	
"	Summer skies	100
"	Galahad Series	80
"	Guinevere	70
"	King Arthur	80
"	Lancelot Series	80
"	Black Knight	80
"	Mixed	115
"	Cameliard Series	42
Aethionema	Cappadocicum	24
Althaea	Indica	20
"	Rosea	12
"	Pontica	30
Allium	Yunanense	100
Alyssum	Montanum	35
Anemone	Multifida Magellanica	80
Anthericum	Liliago	80
Anthemus	Macedonica	160
Aster	Farreri	48
"	Venustus	40
Brachypodium	pennatum	48
Campanula	Alaskana	80
"	Vericolor	80

Cistus	Heterophyllus	80
"	ladaniferus	60
"	Monspeliensis	63
"	Tauricus	80
"	Villosus	80
"	Hirutus	54
"	Cyprius	80

PLANTS SUPPLIED TO CEMETERY BORDERS AND FLOWER BEDS

(Field of Honor, Burnsland Cemetery)

Iceland Poppy		540
	(Union Cemetery)	
Iceland Poppy		178
Aquilegia		80
Salvia		150
French Marigold		200
Snapdragon		100
Zinnia		100
Mimulus	Queen's Prize	100
Salpiglossis		100

PERENNIALS PLANTED IN THE ROCKERY

Dianthus	Alpinus	50
Primula	Alpicola Violacea	100
Myosotis		200
Primula	Chunensis	100
"	Polyneura	100
Lupinus		50
Anthericum	Liliago	25
Primula	Scotica	33
"	Pulloides	25
"	Alpicola Alba	6
"	Wardii	32
"	Sikkimensis	30
Erigeron	Caespitosa	66
Lillium	Tenuifolium	40
Ranunculus	Gramineus	32
Crocus		15
Campanula	Pulloides	4
Anemone	Narcissiflora	10
Primrose	Hybrids	16
Heuchera	Sanguinea	18
Polyanthus	Mixed	10
Lillium	Martagon	18
Meconopsis	Sinuata	36
Primula	Cortiosides	50
Meconopsis	Horridula	12
Trollius		40
Digitalis	Lutea	16
Draba	Glaciales	32

ANNUALS SUPPLIED TO PARKS

Assorted Snapdragon	2,200
Stocks	900
Aceratum	1,000
French Marigold	100
Calliopsis, Crimson King	200
Vixcaria	200
Zinnias, Lilliput	200
Calliopsis, Mixed	200
Viscaria, pink	150
Blue Lobelia	450
White Lobelia	300
Zinnias	200
Salpiglossis	200
Calendula	350
Yellow Stocks	200
Violet Stocks	200

Godecea		200
Nicotiana		400
Snapdragon,	Orange Scarlet	400
Anthemis		200
Zinnias		200
Snapdragon	Yellow	100
Alysum	White	100
Connae		72
Dahlias		70
Snapdragon	Startler	200
"	Orange Scarlet	300
"	Eldorado	300
"	Amber and Gold	1000
"	Mixed	300
"	Gorgeous	400
"	Fair Lady	500
"	Mainaolson	300
"	Du Barry	800
"	Orange Cerise	700
"	Indian Girl	200
Zinnias		100
Snapdragon		100
Aquilegia	Mrs. Scott Elliott	100
Lythrum	Vercatum	100
Phacelia	Sericea	40
Dodecathian		40
Anemone	Pulchitilli	40
Lotus	Corniculatus	80
Dianthus		80
Michaelmas Daisy		40
Campanula		80
Pentstemon	Heterophyllus	40
Allium	Angulosium	80
Potentillia	Andicola	40
Cheiranthus	Allianii	80
Verbascum	Phoenicuim	40
Doroniaum	Caucasicum	40
Potentillia	Aurea	40
Aquilegea	Mixed	40
Scabiosa		40
Agrostemma	Flos Jovis	40
Lychnis		40
Gentiana	Plogifolia	10
Pentstemon		20
Anemone	Sylvestris	80
Digitalis	Purpurea	80
Draba	Aizoon	40
"	Incana	30
"	Fladnzensis	160
"	Magellanica	160
"	Alpina Glacialis	80
"	Bertolonii	80
Edraianthus	Tenuifolius	80
Fritillaria	Meleagris	80
Clematis	Orientalis	60
Cynoglossum	Nervosum	20
"	Officinale	34
Hypericum	Androsaemum	35
Hydrangea	Bretschneideri	40
Iris	Spuria	24
"	Delavoyi	35
Jasminum	Humile	50
Thnepholia	Uvaria	32
Lilium	Regale	70

Lathyrus	Lalifolius	20
"	Niger	30
Lupinus	Douglasii	54
"	Perennis	28
"	Pilosus	48
"	Polyphyllus	20
Lychnis	Dioica	80
Mimulus		80
Oenothera	Glauca Fraseri	80
"	Pumila	35
Pyracantha	Alalantoides	25
Primula	Flagellicaules	80
"	Siktemensis	160
Ranunculus	Weineri	48
Saponaria	Ocymoides	80
Scilla	Pratensis	30
Sidalcea	Malvaeflora	85
Silene	Delavoyi	24
"	Ruprechtii	40
"	Schafta	40
Sisyrinchium	Brachypus	40
Solidago	Vergaurea	35

SHRUBS AND TREES GROWN FROM SEED

Philadelphus	Coronarius	80
"	Wilsonii	40
"	Delavoyi	80
"	Gordonianus	80
"	Henryi	80
"	Incanus	80
"	Magdalenae	100
Syringa	Reflexa	6
"	Amurensis	4
Betula	Ulmifolia	24
Buddleia	Albiflora	80
"	Davidii	80
"	Fallowiana	40
"	Forrestii	80
"	Nivea Yunnanensis	80
"	Stenostachya	80
Lonicera	Chrysantha	35
"	Henryii	315
Spiraea	Aitchisonii	20
"	Densiflora	25
"	Japonica	70
"	Lindleyana	6

PLANTS SHIPPED TO THE NURSERY

Dodecatheon	Hendersonium	300
Canterbury Bell	Blue	200
Campanula	Double Mixed	100
Aquilegia	Mrs. Scott Elliott	100
"	Emperor	100
"	Munstead	100
"	Mixed	300
Delphinium	Pacific Giants	100
Scabiosa	Alpina	100
Papaver	Oriental Brilliant Mixed	200
Chrysanthemum	Conqueror	200
"	Double White	100
"	Single Fringed Beauty	100

Delphinium	Chinensis	100
Trollius		100
Aster	Fardy	200
Aquilegea	Long spurred	100
Prinsepia	Sinensis	50
Salvia	Vergata	100
Lychnis	Arkwrighti	150
Asyneuma	Lemonifolium	100
Campanula	Latiloba	150
Polygonium	Alpinum	100
Gypsophila	Paniculata	100
Dianthus	Monspessutamus	100
Campanula	Media	50
Gypsophila		50
Polemonium	Cacruleum	50
Delphinium	Pelladonna	50
Agrostemma	Flos Jovis	100
Verbascum	Chaxii	100
Aquilegea	Red Star	100
Lupinus	Russellii	100
Sedum	Euphorbioides	100
Lythrum	Lady Sac'ville	100
Papaver	Oriental	200
Dianthus	Delitoides	100
Liatrus	Ligulistylis	50
Potentilla	Rupestris	100
Phlomis		100
Aquilegia	Longistyles	100
Gypsophila	Paniculata	100
Lychnis	Viscaria Splendensis	100
Campanula	Persicifolia	100
Delphinium	Pacific Giant	100
Polemonium	Motte	50
Canterbury Bell		150
Anthemus		100
Inula	Royaleana	60
Phlox	Sommer-leid	200
"	Sweetheart	900
"	Antoinette	500
"	General Petain	300
"	Elizabeth Campbell	400
"	E. I. Farrington	300
"	Selma	200
"	Iris	100
"	Newbird	200
"	Bridesmaid	200
"	Titania	100
"	Mixed	500
Betula	Pendula Alba	20
Rosa	Spinosaime Altaicia	33
"	Altaicia	4
"	Mixed	2
Spirea	Bullata	6
"	Lindleyana	6
"	Aruncus	6

ANNUALS SUPPLIED TO ELECTRIC LIGHT DEPT.

Dahlias		68
Lobelia	White	200
"	Blue	200
Zinnias		200
Stocks		200
Snapdragons	Mixed	200
"	Pink	200

Ageratum		200
Asters		200
Viscaria		200
Nicotiana		200
Assorted plants for window boxes		400
Salvia, pots		37
Dahlias		12
Phlox		200
Snapdragon		500
Zinnias		100
Lobelia		200
Stocks		500
Aquilegia		50
Ageratum		100
French Marigold		200
Lobelia	Blue	200
"	White	200
Snapdragon	Yellow	200
"	Indian Girl	200
"	Mixed	200
"	Black Prince	100
African Marigold		200
Assorted plants for window boxes		500

ANNUALS SUPPLIED TO WATERWORKS DEPT.

Snapdragon	Fair Lady	200
"	Gorgeous	200
"	Dazzeler	200
"	Orange Cerise	100
Phlox		200
Alyssum		200
Viscaria	Blue	300
Aster	Crimson	100
"	Rose	200
Lobelia	Blue	200
"	White	200
Cosmos		100
Viscaria	Pink	100
Schizanthus		100
Petunia	Salmon Glory	100
Calliopsis		100
Asters	Mixed	250
Stocks		50
Nicotiana		100
Dahlias		76
Salvia		76

PLANTS SUPPLIED TO CEMETERY GRAVE PLOTS.

Burnsland Cemetery

Geraniums	130
Double Petunias	87
Lobelia	216
Snapdragon	216
Asters	48
Stocks	108
Petunias	12
Alyssum	96
Marigold	24
Phlox	24
Pansy	132
Nemesia	108

Union Cemetery

Geraniums	86
Double Petunias	34
Lobelia	276
Snapdragon	264
Asters	24
Stocks	24
Petunias	72
Pansies	144
Nemesia	36

St. Mary's

Geraniums	72
Assorted Annuals	84

Queen's Park

Geraniums	24
Lobelia	120
Trailing Lobelia	60
Snapdragon	60
Alyssum	60
Nemesia	60
Phlox	60
Petunias	60
Asters	60
Pansies	360
Double Petunias	6

FLORAL DISPLAYS:

The high standard of floral displays for which Calgary is noted was considerably lower this year, as a result of the unfavorable weather during the spring and early summer. The year 1951 was the most unfavorable, from a horticultural viewpoint, that this department has experienced over a period of thirty years.

Our ornamental parks did make a remarkable recovery during the later part of August and all of September, but at that time of year the danger from frost is to be expected.

Two new floral parks were added to our ever-growing department; one on 16th Avenue and Edmonton Trail, and the other on 10th Street Northwest. These areas both added greatly to the beauty of those districts of Calgary where a considerable amount of traffic passes. Many complimentary remarks were passed on the the department from visitors and citizens, concerning our new floral parks.

As usual the outstanding floral parks were Memorial Park, Riley Park, St. George's Island, Crescent Park, Balmoral Circus, Mount View Park, Rosedale Park, South Mount Royal Park, and Elbow Boulevard Park. The numerous corner plots throughout the city also add greatly to the City's beauty.

The Reader Rock Garden continues to be a much admired beauty spot, and Calgarians and visitors alike are amazed at the variety and beauty of rare flowering plants which, in spite of our adverse climatic conditions, can be grown successfully in Alberta.

The usual maintenance was carried out in this beautiful garden, with the covering from the plants being removed in April, prior to thorough forking and cultivating. 12 assorted shrubs were planted in the rock garden in addition to a variety of annuals and perennials. Because of the type of grass which grows on the lawn of the Reader Rock Garden, viz. Prince Edward Creeping Bent, considerable damage was caused by "Snow Mould", approximately 900 square feet requiring renovating.

The fence which separates the Rock Garden from the frameyard was in a very dilapidated condition and had to be dismantled and replaced with a substantial board fence, 75 feet in length. The fence will give this portion of the garden, reserved for perennials mostly, an atmosphere of sheltered protection and seclusion.

In spite of the short season, many compliments were received concerning the rockery, and comments were passed on the fine showing of Japanese Lilies.

The Cemetery Borders required special attention this spring as there were many perennials which had winter killed. Following the usual early spring preparation of the beds, approximately 200 perennials were set out in the Cemetery borders, a great number as replacements. Other varieties of plants allocated to cemetery borders included five dozen Gladioli bulbs and 875 baskets of assorted annuals.

The following page shows a distribution of plants supplied by Mr. W. Stark, the former lessee of the greenhouses.



Location	Plants
Balmoral Circus:	6 flats Alyssum, 80 Bskts Dianthus, 35 flats & 16 Bskts Marigolds, 58 bskts Nemesia, 70 bskts Petunias 178 Bskts Snaps, 330 Salvia
Burnsland Cemetery:	58 Bskt Asters, 4 flat Alyssum, 133 Dahlias, 1 flat Lobelia, 26 bskt Marigold, 18 bskts Petunia, 10 bskt Snaps, 56 Bskts Stocks.
Cemetery Borders:	60 Bskt Alyssum, 391 Assorted Plants, 362 Geraniums, 1 flat Lobelia, 154 Bskts Marigold, 200 bskts Nemesia, 7 Bskts Viscaria.
City Hall Gardens:	8 flats & 14 bskts Alyssum, 658 Geraniums, 24 bskts Snaps, 392 Salvia, 46 bskts Stocks, 8 bskts Viscaria.
Cliff Triangle:	40 bskts Asters, 8 bskts Alyssum, 24 bskts Marigold, 100 bskts Snaps.
Crescent Park:	40 bskts Asters, 1 1/2 flats & 60 bskts Assorted plants, 8 bskts Marigold, 40 bskts Phlox, 35 bskts Petunias, 80 Doub. Petunias, 140 bskts Snaps, 54 bskts Stocks, 40 bskts Zinnias.
Elbow Drive Gardens:	740 D. Petunias, 55 bskts Stocks, 6 flats & 4 bskts Viscaria, 40 bskts Verbena.
Elbow Park Car Loop:	20 bskts Asters, 1 flat S. Alyssum.
Garden Crescent:	30 bskts Assorted Plants, 12 bskts Nemesia, 2 flats Phlox.
Glencoe Gardens:	2 flats Marigold, 2 flats Pansies, 112 bskts Snaps, 36 bskts Zinnias.
Golf Course:	30 bskts Assorted plants, 50 Geraniums, 1 flat Lobelia, 4 bskts Marigold, 12 bskts Snaps.
Kiwanis Park:	100 bskts Assorted plants, 48 Dahlias, 1 flat Phlox, 48 Salvias.
Louise Br. Approach:	175 Dahlias, 14 bskts Marigold, 8 bskts Phlox, 20 bskts Zinnias.
Memorial Park:	32 flats & 6 bskts Alyssum, 152 bskts Assorted Plants, 252 Dahlias, 700 Geraniums, 1 flat Lobelia, 58 bskts Marigolds, 4 flats & 6 bskts Nemesia, 16 bskts Phlox, 206 bskts Petunias, 390 bskts Snaps, 96 bskt Stocks, 28 bskts Schizanthus, 12 flats Delphinium, 10 flats Viscaria, 20 bskts Zinnia, 7 flats Pyrethrum, 8 bskts Matricana, 229 Roses.
O'Brien's Corner:	2 flats Lobelia, 4 flats Marigolds, 4 flats Nemesia.
Queen's Park Cemetery:	2 flats & 22 bskts Alyssum, 177 Geraniums, 2 flats Pansies, 7 bskts Snaps, 1 flat Lobelia, 16 bskts Marigolds, 24 bskts Nemesia, 5 flats Phlox, 180 D. Petunias, 21 bskts Snaps, 120 Salvia, 14 bskts Stocks.
Riley Park:	98 bskts Asters, 2 flats & 2 bskts Alyssum, 162 Assorted plants, 150 bskts Dianthus, 48 bskts Nemesia, 1 flat & 40 bskts Petunias, 188 bskts Snaps, 480 Salvia, 40 bskts Stocks, 3 flats Viscaria, 95 bskts Verbena, 72 bskts Zinnias.
South Mt. Royal Park:	116 bskts Asters, 8 bskts Alyssum, 96 bskts Dianthus, 104 Geraniums, 44 bskts Nemesia, 40 bskts Petunias, 128 bskts Snaps, 82 bskts Phlox, 120 bskts Zinnias.
St. George's Island:	62 bskts Asters, 2 flats Alyssum, 192 bskts Assorted plants, 100 Geraniums, 1 flat Lobelia, 10 bskts Marigold, 21 bskts Myosotis, 42 bskts Nemesia, 80 bskts Petunias, 408 D. Petunias, 30 bskts Snaps, 515 Salvia, 112 bskts Stocks, 3 flats & 2 bskts Viscaria.
St. Mary's Cemetery:	1 1/2 flats Alyssum, 151 bskts Assorted plants, 70 Dahlias, 5 flats Viscaria.
Swimming Pool	40 bskts Snaps, 2 flats Viscaria.
Talon Ave. Plot:	8 bskts Marigold, 2 flats Phlox.
Tompkins Gardens:	16 flats Snaps, 36 bskts Stocks.
J. H. Woods Park:	80 bskts Asters, 2 flats Alyssum, 150 bskts Assorted Plants, 116 bskts Dahlias, 60 bskts Phlox, 110 Salvia, 1 flat Viscaria.
Mt. Pleasant Rotary:	34 bskts Asters, 50 bskts Assorted Plants, 34 bskts Nemesia, 34 bskts Petunias, 34 bskts Snaps, 34 bskts Stocks,
Elbow Blvd. Park:	12 bskts Asters, 8 Dahlia, 8 bskts Phlox, 8 Salvia.

(SUMMARY: 6,572 Bskets )  
( 199 Flats )  
( 6,439 Single plants )  
( 124,919 plants. )

ST. GEORGE'S ISLAND PARK AND ZOO:

As in previous years, this park continued to be our most popular recreation area. Hundreds of visitors come to St. George's Island; travellers from the entire Dominion, the United States, and parts of Europe. Of course the reason for this popularity is our Zoo, coupled with the spacious lawns, shade trees, shrubs and flower beds. There are also facilities for sports, and the picnic areas which help to draw visitors and spectators or picnic groups.

The President of the Zoological Society, Mr. A. M. Van Ostrand, and the members of the executive have at all times co-operated with this department, and in this spirit much has been accomplished during the past year.

Mr. T. Baines, Curator, in his annual report to the Superintendent, gives us a comprehensive review of the work completed during the past year at the Zoo, Park, and the East Calgary district, all of which come under his jurisdiction. Mr. Baines reports as follows:

"Abnormal weather conditions as usual played an important part in Park management but even so, a successful year can be recorded. Hail did considerable damage but despite this and the cold weather, the floral display taken all in all, was up to the usual standard. Mulching of the lawns in previous years showed up to advantage and together with work done in the fall of 1951, should prove very beneficial in the next year or so. The gravel sub-soil encountered here requires far more top-dressing of lawns than should be normally necessary.

The wet weather caused cancellation of many picnics and some sporting events and in these respects, attendances were below normal.

The unsightly temporary dyke on the north bank of the Island was graded ready for loaming, seeding, and fencing, in 1952. A new exit from the Park at the west end was constructed. So much damage has been done to fencing, by cars in many cases - the fence is lower than the adjoining road, - I feel that before new fences are constructed a series of "bumpers" of cable or poles should be erected.

Once more the Junior Bronks Football team used the east end of the Park as a practice field. Besides giving healthy exercise to some fifty young men, it also created considerable interest among the spectators.

The excellent restrooms constructed in 1946 by the Calgary Zoological Society for the City, are continuing to prove their worth. Upkeep is light and little damage or vandalism reported.

The staff at the Island worked well and took an interest in their work. Excellent co-operation was received from all sections of the department and the Zoological Society, who again permitted full use of their light delivery truck.

While some years reported may have been more spectacular, I feel none have been more important in our efforts to create a Zoological Garden, which, while containing the widest range of specimens in Canada, or compared with any city of Calgary's population, will not be too heavy a financial burden either as regards feeding, labor, or maintenance of buildings.

Specimens: Besides many minor specimens, the following important permanent additions were made in 1951. The added specimens are valued at \$10,000.00.

male leopard	pair whistling swans
male chimpanzee	pair grizzly bears
female polar bear	pair Asiatic White Elk
two wolverine	male black wolf
male African lion	

Taking the year as a whole, losses were light and for the most part have been replaced. Numerous specimens were raised and shipped in exchange throughout North America. Attached is a list of specimens as at December 31st, 1951.

"The Parks Department loamed and seeded the area in front of the primate house and also built a path in front of the pheasant pens and made other minor adjustments to paths. This with a plan to better viewing of the exhibits. The areas between the pheasant pens were also loamed, seeded, and planted, with excellent results."

(Signed, T. Baines)

INVENTORY OF ZOO SPECIMENS

as at December 31st, 1951.

2 Chimpanzees	2 Gennet
1 Drill	4 Caconistles
3 Guinea Baboon	5 Coati Mundi
1 Hamadryas Baboon	2 Raccoon, grey
2 Anubis Baboon	1 Raccoon, black
2 Diana Monkey	2 Raccoon, Albino
1 De Brazza Monkey	4 Kinkajou
3 Spider Monkey	1 Armidillo
1 Pigtailed Monkey	2 Porcupine (American)
2 Sapajou Monkey	2 Red Fox Squirrels
1 Ringtailed Monkey	2 Prairie Dogs
1 Java Monkey	3 Grey Squirrel
4 Rhesus Monkey	1 White Nosed Fox Squirrel
4 Green Moneky	2 Red Pine Squirrel
1 Vervet Monkey	2 Black Squirrel
1 Chacma Baboon	6 Patagonian Cavy
6 Asiatic White Wapiti	10 Beaver
2 Black Tailed Deer	1 Copou
1 Canadian Moose	1 Muskrat
4 Mule Deer	3 Mountain Marmots
3 Virginia Deer	2 Woodchucks
1 Pronghorn Atelope	4 Hamsters
3 Spotted Fallow Deer	2 White Rabbit
3 Brown Fallow Deer	2 Piebald Rat
4 Mouflon	2 Rabbit
6 Audad	6 Guinea Pigs
2 Tahr	4 White Mice
7 Sika Deer	1 Hodsons Porcupine
3 Black Fallow Deer	2 Wallaroo
2 Peccary	2 Opossum
2 European Wild Boar	1 Red and Blue Macaw
2 Polar Bear	1 Large Sulphur Crested Cockatoo
3 Grizzly Bear	2 Military Macaw
1 Black Bear	2 Yellow Naped Parrot
1 Black Bear, Brown Phase	1 Double Yellow Head Parrot
2 African Lion	10 Budgerigar, Yellow
2 Leopard	2 Budgerigar, Green
1 Puma	20 Budgerigar, Blue
5 Wolves	2 White Pelican
2 Coyotes	2 Double Crested Cormorant
6 Arctic Fox	1 Emu
3 Blue Fox	1 Two toed Sloth
2 Red Fox	2 California Sea Lions
2 Red Fox (Silver Phase)	4 Great Horned Owl
2 Red Fox (Cross Phase)	1 Barn Owl
2 Red Fox (Platinum Phase)	3 Arctic Owl
2 Mink	14 Blue Peafowl
4 Northern Bobcat	1 White Peafowl
2 Californian Bobcat	1 Black Shouldered Peafowl
3 Fisher	2 Pearl Guinea Fowl
2 Marten	4 White Guinea Fowl
5 Fitch	5 Chukar Partridge
4 Skunk	6 Chinese Ringneck Pheasant
2 Badger	4 Mongolian Pheasant

3 Formosan Pheasant	4 Song Sparrows
4 Melanistic "	4 White Crowned Sparrows
10 Golden "	4 White Crested Sparrows
9 Lady Amherst "	1 Lincoln Sparrow
5 Reeve "	1 Fox Sparrow
4 Swinhoe "	2 Juncos
4 Silver Crested Taleege	22 Canaries
6 Blue Manchurian Pheasant	1 Evening Grosbeak
3 Old English Black Necked Pheasant	1 Pine Grosbeak
2 Elliott Pheasant	2 American Goldfinch
2 North American Wild Turkeys	1 Goldfinch, Canary Hybrid
1 Mourning Dove	1 Chipping Sparrow
10 Ring Dove	1 Robin
2 Turtle Doves	3 Goldfinch, American
3 White Doves	2 Whistling Swans
4 Magpie Pigeon	2 Sevastopol Geese
4 Fantail Pigeon	3 Black Swan
4 Nunn Pigeon	12 Mute Swans
4 Archangel Pigeon	12 Canadian Geese
4 Satinette Pigeon	8 Blue Geese
4 Suabian Pigeon	2 Snow Geese
4 Swallow Pigeon	1 Ross Goose
4 Modena Pigeon	5 White Fronted Geese
4 Homer Pigeon	7 Gray Lag Geese
4 Dragon Pigeon	4 Egyptian Geese
4 Tumbler Pigeon	5 African Geese
4 Roller Pigeon	4 White Muscovy Ducks
4 Parlor Tumbler Pigeon	2 Colored Muscovy Ducks
4 Muffed Tumbler Pigeon	10 Grey Rouen Ducks
4 European White Pigeon	2 White Rouen Ducks
4 Owl Pigeon	4 Wood-Ducks
1 Bald Eagle	8 Mallard Ducks
5 Golden Eagle	6 Pintail Ducks
1 Rough legged Hawk	4 Gadwall Ducks
1 Swainson hawk	2 Green-winged Teal Ducks
1 Sparrow hawk	2 Blue-winged Teal Ducks
1 Cooper hawk	1 African X Canada Goose
2 Red tail hawk	2 Blue X Canada Goose
1 Prairie Falcon	2 Cayuga Ducks
1 Turkey Buzzard	2 Widgeon
1 Black Vulture	1 Sandhill Crane
2 European Starlings	6 White Chinese Geese
3 American Crow	1 Egret
4 American Magpie	1 Small Blue Heron
10 Bronze Crackle	2 Mandarin Ducks
2 Red Polls	4 California Gulls
4 Pine Siskins	4 Ring-billed Gulls
	1 Glaucous-winged Gull

METHOD OF CONSTRUCTION OF LIFE SIZED DINOSAUR MODELS IN ST. GEORGE'S ISLAND PARK, CALGARY

It cannot be over emphasized that with the exception of colour, which is largely a matter of conjecture, all details are absolutely accurate.

These models are based on the findings of world famous PALEONTOLOGISTS.

After the bones are excavated, classified and placed in position, a scale model is constructed, and this model is usually 12" to 20" long. When a suitable location is decided on, pegs are placed in the ground, where feet, head, tail, etc., will appear. Concrete foundations for feet are next constructed, iron reinforcing rods are sunk in these, such rods protruding above the ground, and other rods attached to them and fabricated to approximate shape of the specimen. Next, metal lath is attached to these rods to give more definite shape and substance to model. Cement and concrete are then placed both in and outside frame, until model gradually assumes correct outline.

Following this, head, tail, toes, etc., are added and finally muscles and outer covering are plastered on, and paint coat applied.

As mentioned above, colour is a matter of doubt, but it is assumed to be either bright camouflage, e.g. the giraffe, or a dull unobtrusive colour, e.g. the elephant.

Credit for these models is due to many people, but no few notes on this unique exhibit would be complete without mention of:

The late Dr. O. H. Patrick, for fourteen years president of the Calgary Zoological Society, and originator of the entire scheme.

Dr. C. M. Sternberg, National Museum, Ottawa, one of the worlds outstanding Paleontologists.

Dr. Barnum Brown, of the American Museum of Natural Science, New York.

Dr. L. S. Russell, Curator, Toronto Museum.

Dr. W. E. Swinton, British Museum.

Mr. Charles Gilmore, of the Museum of Natural History, Washington, D. C.

Mr. Charles Piel, Banff, Alberta.

Mr. John Vanerva, of Calgary, was responsible for the construction of the life-sized models.

\*\*\*\*\*

DETAILS OF LIFE SIZE DINOSAUR MODELS IN ST. GEORGE'S

<u>Guide Book Number</u>	<u>Name and number of specimens</u>	<u>Known range</u>	<u>Geological time</u>	<u>Approx. number of years ago</u>	<u>Weight</u>
(1)	1 Naosaurus	Southern U.S.A.	Permian	200 million	1000 lbs.
(2)	2 Dimetrodon	Southern U.S.A.	Permian	200 million	800 lbs.
(3)	2 Casea	Southern U.S.A.	Permian	200 million	800 lbs.
(4)	2 Hysilophodon Foxi	Isle of Wight, Eng.	Cretaceous	100 million	200 lbs.
(5)	1 Stegosaurus	Canada (Alberta)	Jurassic	130 million	2 tons.
(6)	1 Styracosaurus	North America	Cretaceous	65 million	5 tons.
(7)	2 Ceratasaurus	Western U.S.A.	Jurassic	130 million	8 tons.
(8)	2 Pterodactyl	Central Europe	Cretaceous	70-130 million	30 lbs.
(9)	1 Brontosaurus	Western U.S.A.	Jurassic	130 million	120 tons.

ISLAND PARK AS AT DECEMBER 31, 1951.

Name and number of specimens	Dimensions		Food habits	Notes
	Length	Height		
1 Naosaurus	9 ft.	3 ft.	Carnivorous	
2 Demetrodon	9 ft.	2 ft.	Omnivorous	Reptile group.
2 Casea	8 ft.	2 ft.	Omnivorous	Reptile group.
1 Hypsilophodon Foxi	5 ft.	2 ft.	Herbivorous	Could probably climb trees, using its tail as a balance. A closely related species, Thescelosaurus is found in Alberta.
1 Stegosaurus	24 ft.	60 ft.	Herbivorous	Reptile group.
1 Styracosaurus	16 ft.	6 ft.	Herbivorous	A mild-mannered vegetarian, whose horns, spines, and collar were mere camouflages. Even the huge beak was used merely to cut foliage for food.
2 Ceratasaurus	20 ft.	10 ft.	Carnivorous	Built to travel fast.
2 Pterodactyl	2 ft.	18 in.	Omnivorous	One finger of forelimb elongated to support a bat- like membrane. Some species probably good fliers, others could only glide. Found in Bavarian slate quarry.
1 Brontosaurus (thunder lizard)	107 ft.	34 ft.	Herbivorous	Largest land creature known. May have laid eggs in sand or hatched eggs in body. Called "thunder lizard" as it is suggested it shook the earth when walking.

16

DETAILS OF LIFE SIZE DINOSAUR MODELS IN ST. GEORGE'S

Guide Book Number	Name and number of specimens	Known range	Geological time	Approx. number of years ago	Weight
(10)	1 Compsognathus	Bavaria (Germany)	Upper Jurassic	125 million	100 lbs.
(11)	2 Protoceratops (horned face)	Mongolia	Cretaceous	70 million	1000 lbs.
(12)	1 Chasmosaurus Belli	Alberta (Steveville)	Cretaceous	65 million	3½ tons.
(13)	1 Titanotherium	West Central North America	Oligicene	35 million	4 tons.
(14)	1 Parasaurolophus	Alberta	Cretaceous	65 million	5 tons.
(15)	1 Palaeoscincus	Alberta and Montana	Cretaceous	60 million	1000 lbs.
(16)	**1 Corythosaurus Casuaris Brown, (hooded duckbill Dinosaur)	Alberta	Upper Cretaceous	65 million	2 tons.
(17)	2 Eohippus (dawn horse)	North America	Eocene	50 million	50 lbs.

\*\* In Number 1 Fossil House will be found the actual fossilized bones of a Corythosaurus.



ISLAND PARK AS AT DECEMBER 31, 1951.

Name and number of specimens	Dimensions		Food habits	Notes
	Length	Height		
1 Compsognathus	3 ft.	3 ft.	Carnivorous	Light limbed, scaly skin, graceful build. Lived on small reptiles.
2 Protoceratops (horned face)	12 ft.	2½ ft.	Herbivorous	The only complete Dinosaur eggs ever found are those of Protoceratops. Belonged to horned group, but had no horns.
1 Chasmosaurus Belli	20 ft.	6 ft.	Herbivorous	Low slung, 3 horns and shell-like protection on shoulders.
1 Titanotherium	8 ft.	7 ft.	Herbivorous	Once roamed North America much as the Bison (Buffalo) did, millions of years later.
1 Parasaurolophus	30 ft.	14 ft.	Herbivorous	Belongs to Duck-bill family, bony growth from back of head was a singular feature, a development of the nasal region, and use unknown.
1 Palaeoscincus	20 ft.	4 ft.	Herbivorous	Like a huge turtle, completely encased in bony shell-like covering. Tiny brain.
1 Corythosaurus Casuaris Brown, (hooded duckbill Dinosaur)	30 ft.	10 ft.	Omnivorous	Probably fed under water. Good swimmer.
2 Eohippus (dawn horse)	22 in.	18 in.	Herbivorous	Feet splayed, 4 small toes in front feet and 3 behind. Lived in swampy area. Teeth low-crowned for eating soft vegetation.

DETAILS OF LIFE SIZE DINOSAUR MODELS IN ST. GEORGE'S

<u>Guide Book Number</u>	<u>Name and Number of specimens</u>	<u>Known range</u>	<u>Geological time</u>	<u>Approx. number of years ago</u>	<u>Weight</u>
(18)	1 Messhippus (three-toes horse)	North America	Oligicene	35 million	150 lbs.
(19)	1 Mastodon	North America	Cenozoic	10 thousand	4 $\frac{1}{2}$ tons.

ISLAND PARK AS AT DECEMBER 31, 1951.

Name and number of specimens	Dimensions		Food habits	Notes
	Length	Height		
1 Messohippus	3 ft.	2 ft.	Herbivorous	Three toes on each foot, with central toe largest. Limbs developed for speed. Crowns of teeth high to permit eating tougher vegetation.
1 Mastodon	15 ft.	10 ft.	Herbivorous	When Age of Man began, these creatures still inhabited North America. Many skeletons found in New York State. Mastodon means "nipple tooth" and was so called from conical projections on molars. In early Colonial days, these teeth were considered evidence of a vanished race of human giants.

MUNICIPAL SWIMMING POOL:

The Pool was opened for the season on May 24th, after the usual preparations, and closed on September 7th. This season was most unfavorable, so far as the weather was concerned.

Much difficulty was experienced during the past season, in that we were obliged to staff the pool with almost a wholly inexperienced personnel. This is not conducive to efficient operation of a swimming pool, particularly from a safety and hygienic viewpoint, and it is again suggested that a fully experienced and trained swimming pool operator be employed this coming season.

The exterior of the swimming pool building is showing signs of needed attention. This building has not been painted since it was first built, ten years ago, and should be stucco painted this coming spring.

STATISTICS:

Turnstile reading	57,461
Playground children, free	2,976
Girls' Town Club, free	9
U.S.A. Air Cadets, free	26
TOTAL attendance	<u>60,472</u>

REVENUE:

Swim Tickets:

17,208 @ .10¢	1,720.80
13,678 @ .15¢	2,051.70
14,676 @ .25¢	3,669.00

Punch Tickets:

420 @ 1.00	420.00
------------	--------

Spectators:

2,659 @ .05¢	153.85
--------------	--------

Towels:

1,760 @ .10¢	176.00
--------------	--------

Swim Suits:

1,184 @ .15¢	177.60
849 @ .25¢	212.25

Concession Fee:

50.00

Swim Meet:

5.70

TOTAL REVENUE: \$ 8,636.90

APPROPRIATION: \$10,000.00

Expenditure: \$10,673.53

Operational loss: \$2,036.63

-- COMPARATIVE STATEMENT MUNICIPAL SWIMMING POOL --

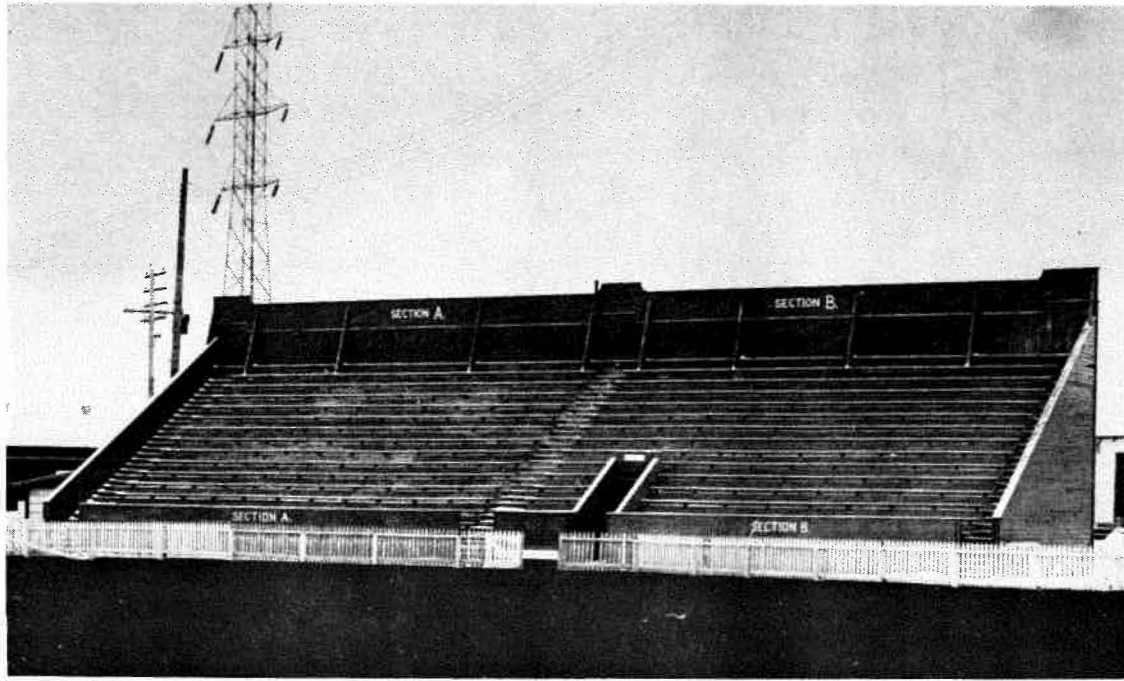
Construction Costs: \$55,850.43

YEAR	Approp- riation	Expendi- ture	Revenue	Seasons Attendance	May 24 Attendance	July 1 Attendance	Free Swims	Operational Loss	Operational Gain
1940	5800.00	3756.00	1949.50	First day opened July 20		638		1806.50	
1941	5000.00	4720.00	3114.40	25527	32	543	2198	1605.60	
1942	5000.00	57,57.20	4601.30	26175	44	1139	2654	1165.90	
1943	6000.00	6343.62	4909.45	35918	411	998	4350	1433.17	
1944	6000.00	6538.45	6622.70	45414	98	413	4157		84.35
1945	6600.00	7070.40	4219.25	43919	488	993	3240	851.15	
1946	7000.00	7774.00	7001.95	48001	845	1372	1948	772.05	
1947	8300.00	8321.66	5911.90	41179	402	1428	2446	2409.76	
1948	9122.00	8644.43	6782.65	49203	817	1141	4840	1861.78	
1949	9000.00	10215.62	7568.60	51600	477	933	2916	2647.02	
1950	8500.00	10480.92	8213.15	62920	324	946	3212	2267.77	
1951	10000.00	10673.53	8636.90	60472	608	206	3011	2036.63	

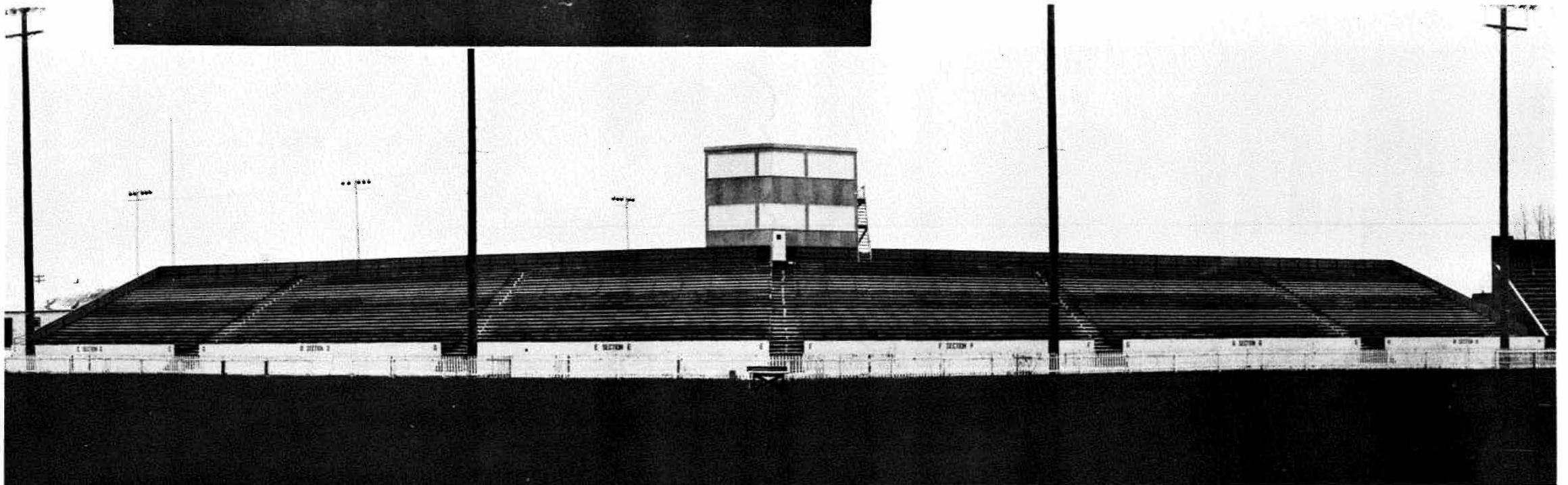
COMPARATIVE STATEMENT OF OPERATIONAL LABOR COSTS, MUNICIPAL SWIMMING POOL

<u>STAFF</u>	<u>1940</u>	<u>1941</u>	<u>1942</u>	<u>1943</u>	<u>1944</u>	<u>1945</u>	<u>1946</u>	<u>1947</u>	<u>1948</u>	<u>1949</u>	<u>1950</u>	<u>1951</u>
	Shaw & Keith	Shaw & Keith	Shaw & Keith	Shaw & Daines	Shaw & Daines	Shaw & Daines	Shaw & Daines	Daines Hanson	Taylor Moran	Taylor Moran	Jones Hammond	Winston, McPherson and Richards.
Supervision	510.00	856.50	527.50	1186.01	1500.34	1221.54	1903.99	993.68	867.23	968.14	1321.80	1185.52
Maintenance Men	578.20	821.90	1256.09	1066.02	1138.32	1210.44	1276.96	1288.79	2138.36	1721.06	2154.81	2061.63
Cashiers	284.60	400.50	404.70	528.01	437.35	431.47	487.25	569.01	577.90	621.20	525.00	491.40
Lifeguards	385.20	552.35	467.05	521.60	538.50	513.50	542.08	608.11	730.86	923.70	1098.30	869.48
Locker Attendants			94.80	140.00	222.20	189.40	261.26	364.98	773.15	881.80	720.05	698.19

27



THE OLD



THE NEW

MEWATA STADIUM:

Financially, the year of 1951 was a successful year for our stadium, but the unseasonal weather played havoc with the events which had been scheduled. Practically every day, some event was rained or snowed out, and had to be postponed to some future date. This year, the new grandstand which was erected two years ago was finally paid for, which is in itself quite an accomplishment, as the new bleachers afford a much larger seating capacity.

As is usual each spring as soon as weather permits, the stadium, ball park, and practice grounds were top-dressed and seeded. These areas were also affected by the unfavorable weather, and will require another top-dressing and reseeding next season. A worthwhile improvement to the stadium this year was the placing of a cement curb around the race track, with all distances or measurements used in track meets, plainly marked in the concrete. This eliminates the necessity of measuring out certain distances during the various events of a track meet. Other improvements include a new first-aid room built by the Stampeders Rugby Club, and located under the north grandstand; also a new fence was erected on the west and north sides of the stadium and the main gate of the stadium repaired.

The play field is now being prepared for the coming season, with 28 loads of fertilizer and 50 loads of loam having been applied.

STATISTICS:

Senior Rugby, "Calgary Stampeders Football Club"

	<u>Attendance</u>	<u>Gate Receipts</u>	<u>12 1/2% City of Calgary</u>
Game #1,	9512	\$ 21,402.25	\$ 2,675.05
2,	7362	15,654.75	1,956.85
3,	8891	16,914.75	2,114.15
4,	6569	13,840.75	1,729.95
5,	10788	20,689.00	2,586.00
6,	7446	15,150.25	1,893.75
7,	6203	13,190.25	1,648.65
8,	4745	11,471.50	1,355.35
	<u>61516</u>	<u>\$128,314.50</u>	<u>\$15,959.75</u>
Sundry games: Junior rugby, High School, etc.			<u>1,187.65</u>
			<u>\$17,147.40</u>

MEWATA PARK:

Special effort has been made during the past two seasons to improve the ball park and by the time the games begin, this area should be in very good condition. In the spring of the year, the park was top-dressed with compost and seeded and again in the fall compost was applied to the whole area.

MUNICIPAL GOLF COURSE:

As a result of the inclement weather experienced by Calgarians last year, the golf season was not as good as anticipated. This was particularly noticeable during the months of April, June, October, and November. However, the wet weather did have a wonderful effect on the grass greens and fairways, in that they received that much needed moisture which is always beneficial to the turf.



July was our best month this season, 7,562 golfers playing the course during this time. Over the period of the season, approximately 35,000 games of golf were played.

Several improvements were effected both at the Clubhouse and the course as a whole: thirteen new large double lockers were made for the men's locker room, and the same number for the ladies' locker room. Also a building 16 feet by 20 feet was moved up and attached to the north side of the clubhouse, which will be used as a pro shop or perhaps for extra storage. Six new tables and 12 chairs were purchased for the clubhouse, so that the room will now accommodate far more of the golfers. Another improvement was the laying of new linolium on the kitchen floor.

The course underwent the usual yearly renovation: all fairways sprayed with 2-4-D, with commendable results; each tee cleared of weeds; rubber mats cleaned and repaired regularly; flower beds and borders planted with Snapdragons, marigolds, Lobelia, and several other perennials. Later in the season 40 yards of loam and 26 yards of compost were put through the pulverizing machine, mixed with 12 yards of sand and put through a screen before being applied to the greens. Another problem at the golf course is of course the gopher and mole, and to combat them our workmen set traps, or shot them. All burrows were filled in and levelled. During 1951, additional tree plots were staked out, and trees which had winter-killed were replaced. The department hopes to proceed with the tree planting project until the entire golf course is ornamented with trees. Without trees the whole area would seem very bleak. Also this year a wooden ramp was built on both sides of the steps approaching the bridge from the Gent's 14th tee, to accommodate the golfers with caddy carts. Another improvement was the extension of a water pipe to drain water away from the Gent's 1st green.

On the following pages will be found statements of yearly expenditures and revenue.

MUNICIPAL GOLF COURSE

Statement of Expenditure and Revenue

EXPENDITURE

REVENUE

Year	Construction & Improvements		Maintenance		Expended from accounts other than appropriation.	TOTAL	
	Clubhouse	Course	Clubhouse	Course			
1915		962.25		398.93		1361.18	419.85
1916	1653.20		101.10	1810.43		3564.73	1803.30
1917		721.82	375.87	2166.86		3264.55	3005.30
1918	958.77	649.08	329.88	1757.47		3695.20	2777.50
1919	958.77	177.58	568.45	2335.49		4040.29	2634.00
1920	958.77	162.40	399.83	2971.26		4492.26	3301.75
1921	294.01		890.15	3216.18		4400.34	5712.50
1922	253.86	220.11	694.15	2845.66		4013.78	5771.15
1923	852.24		908.89	3149.30		4910.43	5993.15
1924	636.78	12.00	909.75	3102.26		4660.79	4688.20
1925	138.98	144.03	966.62	2863.79		4113.42	5049.25
1926		169.68	925.45	3258.48		4353.61	4892.25
1927	55.62	311.26	818.57	3164.21	By-law 2411, course imp. 105.33	4455.09	4188.35
1928	214.39	342.27	3254.91	2822.88	By-law 2411 1052.33	7686.78	6717.70
1929		113.01	3422.40	3945.33	By-law 2411 598.28	8079.02	7056.80
1930	76.99	299.91	4370.09	4156.93	By-law 2411 43.48	8947.40	10678.05
1931		576.02	4314.73	4192.31	Relief a/c remodelling basement, kitchen and new water service - 1201.09	10284.15	9701.75
1932	145.05	639.03	3812.74	2370.70		6967.52	6255.90
1933	218.83	387.43	3925.38	1887.56	Relief a/c log hut 60.00	6479.20	9561.70
1934	325.11	393.04	4337.33	2835.05	Commissioners Contingent Fund, sewer 1265.74	9156.27	10732.70
1935	50.06	149.80	4824.31	3365.28		8389.45	9764.05
1936			1821.15	2774.79		4595.94	7283.30
1937			1561.71	4106.33		5668.04	7660.15
1938	231.85		1097.82	3399.85		4729.52	4739.10
1939	277.06	455.45	1167.10	4732.97	Bridge, Engineers a/c	9106.77	5409.68
	8300.34	6836.17	45798.48	73630.30	6800.44	141415.73	145797.43

MUNICIPAL GOLF COURSE

Expenditure and Revenue

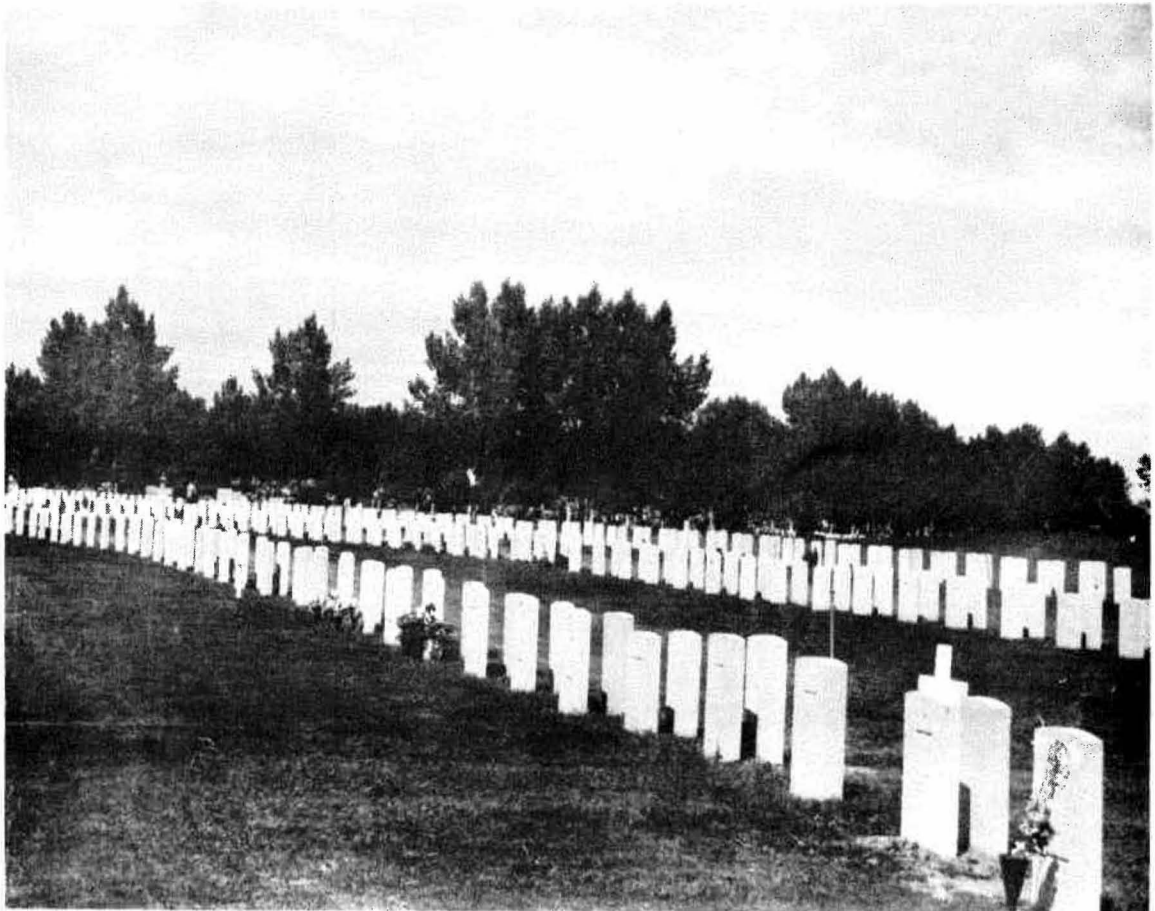
EXPENDITURE

REVENUE

Year	<u>Construction &amp; Improvements</u>		<u>Maintenance</u>		<u>Expended from accounts other than appropriation.</u>	<u>Total Expenditure</u>	<u>Total Revenue</u>
	<u>Clubhouse</u>	<u>Course</u>	<u>Clubhouse</u>	<u>Course</u>			
Brought FWD:	8300.34	6886.17	45798.48	73630.30	6800.44	141415.73	145797.43
1940		610.00	2048.41	4363.33	Supplementary Approp.W/S 5831.28	12853.02	5225.86
1941		516.25	1112.90	10201.87		11831.02	6724.96
1942			823.95	10134.60		11008.64	6640.21
1943		1134.23	937.67	4896.67		6968.08	6165.08
1944		1588.80	1480.61	6637.30		9706.71	7384.50
1945		2483.75	1619.97	3400.69		12504.41	6742.16
1946		926.90	1599.40	8880.39		11406.69	11366.75
1947		2045.00	1514.17	11001.25		14560.32	12785.65
1948			4315.59	10100.01		14415.60	12072.90
1949			2429.30	12001.07		14430.37	16412.50
1950			2527.70	10368.50		12896.20	14440.45
1951	77.25		3431.01	11859.39		15368.15	13989.65
TOTALS:	8377.59	16191.10	69639.16	182525.27		12631.72	289365.44



UNION CEMETERY



BURNSLAND CEMETERY

## CEMETERIES:

Queen's Park: In consideration of the adverse weather, and consequent difficulties under which the men worked, this cemetery was maintained on a high standard. Since Queen's Park is now the main burial ground, continuous development is necessary. Last season was extremely wet, and a great number of the graves became sunken with the saturation of the soil. These were given due attention, as was the replanting of trees, perennials and annuals. Also improvements were seen at the cottage, the entire interior of which was repainted including the office and reception room. Linoleum was laid on the floors, and the rear entrance enclosed for protection against snow and wind.

The necessity for fencing is increasingly evident at this cemetery, as the problem of straying livestock, dogs and children playing on cemetery property is becoming an expense to the city. It is the intention of the department to have all our municipal cemeteries completely fenced in with chain-link fencing. This is included in the long range development program of the Parks Department.

During the year 1951, 709 interments were made at Queen's Park Cemetery.

Union: The past season was very unfavorable as far as cemetery development is concerned. Shrubs and plants were frost killed, lawns suffered from snow mould, and as a result of the heavy precipitation, more and more sunken graves were becoming apparent, and requiring repair.

The last section of Union cemetery to be opened, Section Y, was completed with the loaming and seeding of the entire area, about 9,300 square feet. Here also three new flower beds were laid out and planted with Peonies and various annuals. Alternate spruce and birch were planted along the sides of Section Y, that are adjacent to the roads.

The number of burials made this year totalled 169.

Burnsland: This cemetery required general attention, including the seasonal cultivating, cleaning and forking of tree borders and flower beds. New plantings of poplar and willow on the south end of the cemetery suffered considerably from frost and will require replacing in the spring. This year totals of 2,000 annuals, 188 Dahlias and 500 poppies were planted in the various beds.

This season also saw continued development of the Field of Honor, an area of 7,840 square feet in Block 1, Section T, being graded, loamed and seeded. Further to this, Block 4, Section T, was measured and mapped out, and the lot markers supplied, in all 120 perpetual care lots, 4' by 10'. An additional amount of fill will be required next season to complete this work.

Again this year, extensive damage to the area comprising section H, resulted from an overflow of water breaking through from the Macleod Trail. Some 170 graves required repair and reseeded, 75 cubic yards of fill and 75 yards of loam being needed to complete the repair.

The total number of burials made in this cemetery for the year 1951 was 226.

St. Mary's: The seasonal work in this cemetery included cleaning and forking of borders and flower beds, and repairing of sunken graves, which were more evident this year.

The following blocks were laid out, and lot markers supplied: Block 1, Section L, Block 1, Section H, and Block 1, Section K. Also, the cemetery was extended southward, by 136 feet, plans for which are being prepared. Further improvements included the levelling of the ravine on the east side of the cemetery, and it is hoped that more material will be available next season to complete these projects.

64 sunken graves were repaired, and a total of 156 new burials were made during the year.

Chinese: The usual seasonal maintenance work was carried out at this cemetery, replacements of trees, shrubs or flowers put in wherever necessary. All the young trees were staked and a wide area reseeded. In all, 67 sun-ten graves were repaired and 23 burials were made.

BOULEVARDS:

Extensive repair, replanting, and reseeding was carried out on our boulevard project during the past season. Large boulevard trees, which had been severely damaged during the summer by strong winds and the heavy snow, had to be removed. A new Zipper motor scythe was used on the boulevards for mowing rough grass, for the first time this season, and was a definite success. Also, included with this type of work was the clearing and trimming of low hanging branches, overgrown hedges, etc., for sidewalk clearance. Several shrubs were cut back to clear blind corners for motorists. A good deal of time was spent in clearing silt and debris from boulevards, a result of blocked storm sewers or drains.

During the season over 300 trees were removed, approximately 4,000 were pruned and headed back. Of this amount 1,180 were headed back for the Electric Light Department, as branches were growing into and interfering with the light wires. Also about 4,000 shrubs were pruned along the different boulevards, and an area of approximately 12,000 square feet of boulevard was renovated. This project also included a tree-planting program, over 200 trees having been planted, and 3 shrubs.

BY-LAW WORK:

This work was seriously hampered by the unseasonal weather, excessive rains, and lack of suitable labor. However, in spite of these handicaps, approximately two miles of boulevards were constructed under the various by-laws.

BRIDGE APPROACHES:

Grass areas were kept well watered and mowed, the flower bed was planted with annuals, and 30 shrubs were planted. Over 150 shrubs required pruning.

BANKVIEW PLOT:

This plot was cultivated on several occasions and the usual mowing and watering given the area during the past season. Also all trees and shrubs were pruned.

BALMORAL CIRCUS:

The usual attention was given this ornamental area during the season, and considering the inclement weather of 1951, including both hail and snow storms, the beds were quite colorful. Most of the flower beds required replanting before any successful display of flowers was seen. As a result of the digging of a waterline, through the Southwest corner of the area, approximately 2,000 square feet of lawn had to be renovated. Dandelions are gradually being brought under control, the lawns having had two applications of 2-4-D, during the summer. At the close of the season, all flower beds were dressed and dug in preparation for spring work.

BEAUMONT CIRCUS:

This small park was brought up to standard with the usual early spring renovations. During the late summer the trees and shrubs were pruned.

CAPITOL HILL PARK:

This park is an ornamental park, and has in addition a small wading pool, which was kept cleaned and drained during the summer season, as the children received a great deal of satisfaction from this pool. The grass was mowed, and borders cultivated twice during the summer.

#### CITY HALL GARDEN:

The usual maintenance was given these flower beds during the spring months, prior to planting of annuals and replacements among the perennials. The Geraniums required replacing on two or three occasions due to the inclement weather and did not measure up to their usual standard of display until August and September. However, hope springs eternal, and to vary the display for 1952, approximately 1,050 tulips have been planted in anticipation of warmer spring weather.

#### CENTRE STREET CUT:

A marked improvement in the appearance of Centre Street resulted from the mowing and raking of the long grass in this area, and after pruning was completed on both hillsides.

#### CLIFF TRIANGLE:

Here we have another small park, which is in effect a sunken garden. The several summer seats and pleasant surroundings are appreciated by the patients of the Nursing Home, which is located across the street. The display here during the season was both colorful and attractive. The usual care has been given this plot preparatory to early spring planting.

#### COSTE HOUSE GROUNDS:

The Coste Place is an old residential land mark, and was once one of Calgary's beauty spots. It is now occupied by the Allied Art Centre, but the grounds are partially maintained by the Parks Department, as it is city property. This year the hedge along the entire front was trimmed back to six feet above the ground, and it has been suggested that some of the large trees be removed and the grounds renovated.

#### CRESCENT PARK:

Many comments were passed this season with regard to the great improvement to the general appearance of the entrance off Crescent Road. The completed planting of the rockery, and the colorful floral display being the contributing factors. General Maintenance was given the area, and the necessary replacements to flower beds made. Approximately 36,000 square feet was seeded to lawn. Final work this fall was completed with the pruning of the trees and shrubs.

#### CRESCENT ROAD TRIANGLE PLOT: (Crescent Road and 1st St. N. W.)

This plot was given the usual maintenance during the summer, the necessary planting, pruning and digging having been completed.

#### CRESCENT TRIANGLE: (Crescent Road and 3rd St. N. W.)

This small triangle was rather impressive during the summer, as the flower beds were in a healthy and colorful condition. All beds have been prepared for spring planting.

#### CARTIER PARK:

This is quite an extensive area of park ground, the larger portion of which is undeveloped, being on a very steep incline which would be very difficult to maintain. The rustic steps and hand rail at the far end of the park were badly damaged by vandals, and 120 feet of the hand rail required repair; also 26 of the steps were replaced. The footpaths, being of gravel, are difficult to maintain, especially with regard to weeds. The general appearance of this park during the summer was quite impressive, and an improvement to the district. The grove of willow and poplar trees at the far end of the park were given a thorough cleaning out: a total of 186 trees and 86 shrubs being pruned. Also the dead wood was removed from the Caragana hedge at the southwest corner of the park. This year the curb and gutter were installed at the top end of the park, on Cartier Street, over 300 feet of the old stone gutter being removed. Approximately 2,000 square feet of ground will be added to Cartier park next year.

#### CAPITOL HILL PARK:

This park was well kept, the grass mowed and borders cultivated twice during the summer. The usual fall preparations, digging and pruning, etc., were not completed owing to adverse weather conditions.

#### EARL GREY PARK:

Landscaping of the area having been done the previous year, the workmen were able to accomplish more in the matter of planting trees and shrubs, including Cotoneaster, Lilacs, and flowering cherries. For a background, a row of small spruce and birch trees were planted alternately. The trees and shrubs did very well during the past season, but a little difficulty was experienced with soil washouts on the terraced portions of the playground area. Plans for the flower beds are complete, and these will be prepared during the coming season. The planting of floral beds will add much to the appearance of this project.

#### ELBOW PARK BUS LOOP:

The lawn seemed to do very well this season. A flower bed of red Asters was colorful and attractive. The bus loop would be greatly improved if the curb and gutter were completed, and a small hedge planted around the edge. It is hoped this will be accomplished in the near future.

#### ELBOW DRIVE GARDENS:

The flower beds at this location did extremely well this year, and were appreciated by many visitors. The one summer seat in the centre of the plot was never vacant during good weather.

#### ELBOW DRIVE ISLAND:

This tiny floral island in the middle of the drive is quite unique, and the floral display this season was very impressive. This fall the flower bed was prepared for the planting of bulbs: in all 603 tulips were planted. A color scheme of red, white and blue, in a circular pattern should be one of the city's bright spots next year. When the season for the tulip blooms is over, annuals will be substituted. This bed was covered with mulch for winter protection.

#### ELBOW PARK SWIMMING POOL GROUNDS:

This quiet and secluded spot along the Elbow river is usually well patronized by Calgarians and visitors alike. The native shrubbery planted on the west terrace showed increased growth this year, while several Caragana shrubs were removed from the entrance of the service shed at the north end of the grounds, and should give more clearance when equipment is to be moved in and out of the building. The department hopes to have better heating facilities installed, and has had several requests for a children's play slide to be included with the playground equipment. On Halloween night of this year, vandals were busy and four of the long wooden seats were totally destroyed. These will need replacing next season.

#### EAST CALGARY ROTARY PARK:

The usual routine work was done, in the main consisting of trimming hedges and mowing grass. This is a combination ornamental and floral area, and is usually well patronized. Some of the trees and shrubs in the over-congested area around the playground were cleared out. It is hoped that this will be completed during 1952.

#### GARDEN CRESCENT:

The usual general maintenance and care was given this small ornamental area and also some additional improvements were made. The



rustic trellis here was in poor condition, and required replacing. A new trellis here, 135 feet long, and six feet high was built. At the very south end of the Crescent is a rustic summer house with a fountain, both of which are in very poor repair, and have not been in order for some years. A number of the residents along the Crescent have requested that it should either be repaired, or else taken away altogether.

#### GLADSTONE ROAD PLOT:

This plot was dug over twice during the season, and also watered. The department intends to prune all shrubs here, as they are growing too dense.

#### GLENCOE GARDENS:

Due to the heavy fall of snow and strong winds of last summer, the shrubbery at Glencoe was badly damaged. Crab apple trees and other choice shrubs had large limbs broken and required severe pruning. The floral display was also damaged this summer, soon after planting, and a number of replacements were necessary. However, the final results were very pleasing.

#### HARVETTA HEIGHTS:

This area has been levelled and graded during the past season, and a building and hockey rink placed on the playground. This will be of great benefit to the children of the district.

#### HIDDEN TRIANGLE: (6th Ave. and 1A Street Northwest)

This area received the usual care, borders being dug over twice during the summer.

#### HILLHURST PARK:

Because of the enormous amount of water oozing out from the north bank of this park, the department was unable to complete the development of this playground which the city has promised in accordance with an agreement with the Hillhurst Community Association. The Engineers' Department laid a sewer pipe to drain off the water from this field and we hope this will enable us to finish the project this coming season.

#### KIWANIS PARK:

This very attractive and centrally located ornamental park was given the usual attention during the early spring, after which approximately 300 perennials were put in as replacements in addition to a quantity of annuals. In all, about 42 trees and 404 shrubs were pruned. Because of the sheltered location, the floral display was very impressive and in spite of the inclement weather, offered an interesting and colorful picture to citizens and visitors.

#### JACOUES' CORNER PLOT:

This small terraced part is very difficult to maintain, as there are no watering facilities here. It is hoped that a water system can be put in here in the near future, which will greatly benefit the lawn and birch trees which have been planted from year to year.

#### KILLARNEY PARK:

Further to grading, loaming and seeding to grass, etc., the department intends to put in flower beds for annuals this coming season. This ornamental park surrounds the Killarney Library, and should enhance the general appearance of this district. An extensive area south of the Library was graded, loamed and seeded to grass during the past season. This will benefit the children in the district, as the portion developed is suitable for baseball diamonds, football field, and other sports grounds.

#### LEVIS PARK:

This large triangular-shaped area is still under development, and during the past season, the newly sown grass suffered severely from the heavy rains, over 1,000 square feet of ground requiring loaming and re-seeding. This fall most of the flower beds were cut out, and prepared for spring work. It is the intention of the department, during the coming season to prepare a few more beds in the centre of the park, and in addition, a row of trees and shrubs are to be planted in a semi-circular fashion in each side of the park. This fall the lawn was top-dressed with compost, in readiness for spring work.

#### MISSION PLAYGROUND:

This year the playground in this area was loamed and seeded to grass, and as it is a new venture in the district, it is very much appreciated by the children and adults of the area. Many compliments were passed with regard to the success of the project.

#### MEVATA BOULEVARD AND TRIANGLES:

Annuals were planted in the round bed on the south side of the Louise Bridge, and made a very attractive showing during the later part of the season. The long shrub border south and west of the Louise Bridge was given the usual attention and the shrubs were pruned. Quite a number of replacements were also required last season in this area.

#### MOUNTVIEW PARK:

The playground area east of the floral park was graded in readiness for spring seeding. At present there is a large oval-shaped speed skating area which is much enjoyed by the residents and all those who enjoy this type of sport. Two hockey rinks were constructed in this area, and are under the supervision of this department. These are used extensively by the midget and juvenile hockey players.

The floral park in this community is quite distinctive and is appreciated by the residents of the district. Many favourable comments were passed on to the department regarding the floral display during the past season. Several varieties of climbing vines were planted along the fence separating the floral park and playground area, and this fall flower and shrub beds were cultivated in preparation for early spring activities.

#### MEMORIAL DRIVE:

A continuation of the loaming and seeding of the dyke along the Sunnyside boulevard was carried out during the past season, approximately two blocks being completed.

A great deal of damage and destruction was suffered due to careless truck drivers. The yearly destruction of trees and shrubs is shameful.

#### MEMORIAL PARK:

The best known of all our parks is of course Memorial Park which, with its close proximity to the Colonel Belcher Hospital, the Public Library and city centre, is appreciated by thousands of citizens and visitors alike. Here a horticulturist may browse to his heart's content, while his friend the book-lover reclines in passive enjoyment of his novel. The beauty and variety of the floral display is indeed a treat and very rare, when one remembers the short season.

A great deal of the credit for the high standard of development of Memorial Park must be given our men, who are ever on the watch in their care for the plants, trees and shrubs. After the proper renovations,

approximately 340 perennials were distributed throughout the park, mostly as replacements; also a considerable number of assorted annuals were planted in the beds. Shrubs which were planted during 1951 included 229 Rose bushes, some being replacements. After the usual cultivation and preparation for next season, approximately 1,600 tulips were set, which will augment the early spring's floral display. During the 1951 season all hedges required trimming and pruning, 40 spruce were pruned in addition to 577 shrubs, and at regular intervals during the season all trees, shrubs and plants were sprayed to combat disease and insect pests.

It is hoped that the coming season will be more favorable than the last, as this is the all-important factor in the progress of the department.

#### MOUNT PLEASANT ROTARY PARK:

This popular combination ornamental and recreation area was given the usual detailed care this past season, including cultivating, digging of borders, pruning, and replanting wherever necessary. The area around the fire-station was landscaped, shrubs and perennials being planted and approximately 1,000 square feet of lawn seeded. The Mount Pleasant Tennis Club were given permission to erect a building in the park, south of the tennis courts and in the north border of our floral park. The building is as yet only partially constructed, but when completed will be an added attraction in the park.

#### NEW ROSEDALE PARK:

This is a relatively new project, and in future years will greatly benefit the residents of the district. During the season, all the flower beds were cultivated and planted with annuals, and also trees and shrubs. We believe in a few years' time the New Rosedale park will be one of distinction, and one of Calgary's beauty spots. This park is situated in an area of strategic importance, as the west entrance to our city lies in this location. Already many tourists have passed very complimentary remarks about our park and floral display.

#### NEW ROSEDALE RECREATION PARK:

During the past season, the recreation area, 13th Avenue and 9th Street Northwest was thoroughly cultivated and seeded to grass. Fortunately the playfield has now a very good catch of grass.

The community association received permission from City Council to erect a spacious and modern community hall on this area, and this, when completed, will be a distinct and impressive asset to the whole park.

#### O'BRIEN'S CORNER PLOT:

This small park, hidden away along the banks of the Elbow River, was very pleasing this summer. The annuals which are planted here are usually a variety that do well in the shade, as this plot is quite secluded. Next season the department intends to complete the pruning, and repair the rustic seat.

#### PREMIER WAY PLOT:

Three birch trees were planted on this plot of ground to relieve the bareness of the area. The hedge received the usual trimming and the grass was kept cut and watered during the season.

#### PRINCE'S ISLAND:

A considerable amount of underbrush has been cleared away during the past season, but there is still much more to be removed, before further improvements can be effected. The amount of money appropriated for this project each year is not sufficient to make any appreciable showing as far as development is concerned. As was suggested, an amount of \$15,000.00 set aside each year, would be much more satisfactory. Because of its close proximity to the heart of the city, the development of this park would be very advantageous to Calgary citizens, and it is the hope of this department to accomplish as much as possible each year, until the whole area is completed.

#### RILEY PARK:

This park continues to be very popular with adults and children alike because of the spacious lawns, floral park, playground and equipment for the children, and the swimming pool, which was deepened and renovated two years ago.

Our department gave this park the attention required, including the pruning of trees and shrubs, cultivation of beds and borders, etc., during the whole season. During the past year we had the honour of welcoming the English cricket players, who had toured Canada, playing in each large centre. They commented on the well planned "Pitch" in Calgary's Riley Park. The one difficulty we met with was the accumulation of a lake of water on the field, fed by the ever present rain-cloud. However, the department managed to pump this water off the field in good time.

#### RENFREW PARK:

This new park was graded, loamed and seeded this summer, in preparation for the cutting out of flower beds, and the planting of trees and shrubs in the spring. The residents of this district are very pleased with this new park.

#### RIDEAU ROAD PLOT:

The one feature of this ornamental plot is the shrubbery. The department hopes to have flower beds, of annuals and perennials, planted along the edge of this shrubbery to brighten the area, in future seasons.

#### RIVERDALE AVENUE PARK:

This could really be termed a boulevard park, as it is situated on both sides of the sidewalk, extending down to the river, and along Riverdale Avenue for a block. This ornamental area is appreciated by many who love to relax by the river. This area could be improved by the addition of flower beds. Children playing in this area have mutilated severely the small crab apple trees which were planted two years ago. These will need replacing, as will the concrete seat at the east end of the park, as it was totally demolished and thrown into the river by vandals.

#### RIVERDALE AVENUE TRIANGLE:

This small ornamental triangle was renovated last year. Old shrubs were removed, and the lawn loamed and seeded. A birch tree was planted in the centre of the plot, and a flower bed cut out and prepared for the Asters, which did very well during the past season.

#### RIVERSIDE RECREATION PARK:

Grass was kept cut during the summer, and a hockey rink and skating area built last fall. This is a very congested district, and because of this our department gives all the help possible so that the children of this community can enjoy sports and relaxation.

#### ROSEVALE PARK:

This large area is used mostly for recreational purposes. A section, 268 feet, of rustic fence was repaired this season, and the rest of the park received regular attention during the summer, in the mowing, digging and cultivating of the centre field and the outside boulevard.

#### SUNNYSIDE SLOPE:

It is the intention of the Parks Department to work gradually towards the improvement of the area. Last summer the grass was mowed and raked, and 175 shrubs were planted on the slope.

SUPERIOR AVENUE PLOTS: #1 and #2.

The usual seasonal renovations were carried out in these small plots, with very successful results, considering the poor weather conditions.

SOUTH MOUNT ROYAL PARK:

Several comments were passed on the grand display of Zinnias in this park during our short summer season. The Aster beds also did remarkably well. The flower beds and shrub beds have been dug and compost spread over them in preparation for next spring's activities. It is the intention of the department to loam-in some of the cinder paths next season.

SHORT STREET PLOT:

Shrubs and trees were pruned at the request of the residents of the district. The usual maintenance such as cultivating borders, planting of annuals, and grass cutting was carried out.

SUNALTA RECREATION PARK:

The south portion of this recreation park was loamed and seeded to grass, and with the heavy precipitation of last year, showed remarkable results. Members of this community paid this department for trees and shrubs to be planted on the north end of the park. The trees and shrubbery will in time give the necessary protection to this exposed district.

SUNALTA TRIANGLE PARK:

General maintenance and care was given this small triangle during the past season.

SCOTLAND STREET PLOT:

In this small plot, the trees and shrubs were pruned, and beds and borders cultivated in readiness for spring planting.

SCARBORO PLOT:

The floral display was very satisfactory in this little park, and towards the end of the season all beds and borders were prepared for early spring work.

SOUTH CALGARY PARK:

This is entirely a recreational park at present, but an amount was appropriated in our estimates for the development of the east bench of this park into a floral park. However, later in the season it was decided to construct a firehall on a portion of this land, and the department was unable to landscape an area for a floral park, as construction work was going on at all times. It was felt that it would be useless to attempt any landscaping while heavy equipment and trucks were being transferred from one place to another. As the firehall is now completed, it is the intention of the department to begin landscaping operations in this area as soon as weather permits next spring.

TECHNICAL SCHOOL GROUNDS:

During the past season a large portion of land south of 13th Avenue Northwest was graded and seeded to grass, this work being done by the staff of the Provincial Department of Public Works. However, the grass did not seem to germinate any too well.

The usual attention was given the grass area all summer, and trees and shrubs were planted all around the north area. The flower beds have been partially prepared for next spring's work, at which time they will be loamed and planted.

#### TOMPINS PARK:

This rectangular park, between 7th and 8th streets on 17th Avenue, was given the usual annual maintenance, including watering, mowing, and planting of annuals, etc.

This park is much used by students from Western Canada High School, during their lunch hour. Receptacles have been placed in the park for the use of students in disposal of paper, etc., but they fail to use them, and spread their waste paper over the park, giving the department extra work in cleaning up.

#### TRIANGLE PLOTS: 8th St. W., (Mount Royal)

These three triangles were cultivated and kept clear of weeds and waste materials. The shrubs were pruned back to assure better vision to motorists.

#### TUXEDO PARK:

This park is in much need of renovating, as the grass is in very poor condition. The whole central section should be ploughed, disced, raked and reseeded. All trees and shrubs were pruned last fall, and this has helped considerably to make the park look more tidy.

#### TRIANGLE: (1st Avenue and 5A Street Northwest)

This little park was planned after the pattern of a sunken garden. During this season, the parks department workmen gave it the usual attention which includes watering, grass cutting and cultivating.

#### TALON AVENUE PLOT:

This small but attractive sunken garden did very well this season, the annual beds making quite a showing. The rustic fence in this park is being broken down continually by motorists, and 85 feet required repair. After a late fall pruning, digging and fertilizing of flower beds, etc., this area is well prepared for spring activities.

#### 34TH AVENUE CUT: (CHRIST CHURCH)

The rustic fence, and also the path which zig-zags up this steep incline, was repaired. All shrubs were pruned.

#### J. H. WOODS PARK:

In April of this year, spring work was started in Woods Park, and throughout the spring and summer no new work could be started as the weather was unfavorable. The rose bushes, some of which had winter-killed, had to be pruned back severely. In previous years, the beavers have damaged the poplar trees, but this year they seemed to be under control. In spite of other difficulties, however, we received several comments on the fine strain of dwarf annual phlox in the flower beds.

#### WEST MOUNT PLEASANT PARK:

The care and effort spent in the maintenance of this park in the fall of 1950 was very apparent in the splendid showing it made during the spring and summer of 1951. Approximately 12 trees and 8 shrubs were replaced this spring. It is hoped that the flower beds can be cut out and completed before spring planting time.

#### WINSTON HEIGHTS:

As this is a comparatively new area, the long grass and weeds required cutting. The park and playground was cleaned up later in the fall of this year. In all six flower beds have been cut out and prepared for spring planting. This will add much to the appearance of this park.

#### TREE PLANTING ON PLAYGROUNDS:

There was no planting done on playgrounds during the past season, as the department deems it inadvisable in view of the damage done by children to trees that were planted previously.

#### PARKS SHOP, 13TH AVENUE AND 6TH STREET EAST:

This section of the Parks Department may well be considered one of the most important. It is at this place that all tools, hand mowers, motor mowers, scythes, sprinklers, hosepipe, etc., are kept repaired and in good condition.

To give some idea of the activities of this shop, we might say that we also repair and sharpen mowers for the Electric Light Department, Fire Department, Waterworks, School Board, and General Hospital. The complete maintenance and repair of all playground equipment for the Recreation Division of this department is also carried on at our shop, which is no small item in itself. The work done, however, is not limited to the mere maintenance of equipment, for instance, the shop staff designed and built a soil levelling machine for new graded areas, which has been tried out, and has proven very satisfactory. A large trailer and tool box was also built for the boulevard workers, where the men may eat their lunch in comfort, and also lock up their tools. A snow scraping device was also constructed for the stadium, which will assist materially in the proper upkeep of this playing field. Also playground shelters were constructed which were placed at strategic points for the use of supervisors during the summer season. Several new pieces of important equipment were added, which will save much time in labour and cost.

#### CHARITABLE AND WORTHY ORGANIZATIONS ASSISTED:

As in previous years, the Parks Department has aided many types of organizations, including the Horticultural Society, the Gladiolus Society, the Dahlia Society, and a great many other clubs, for whose benefit the department put on lectures, slides and demonstrations for the furtherance of horticulture in Calgary.

As has been the custom, bleachers were placed at various vantage points in the city during the Stampede Parade for the benefit of wounded veterans from the Colonel Belcher Hospital, and from other rest homes throughout the city.

In connection with the re-landscaping of the grounds around the Red Cross House, the following commendation was received by the Superintendent from the Secretary of the Calgary Branch of the Canadian Red Cross Society:

"At the recent Annual Meeting of the Calgary Branch, the following resolution was unanimously adopted: 'That the Canadian Red Cross Society, Calgary Branch, in its Annual meeting assembled this 30th day of January, express and place on record, its sincere appreciation of thanks for the valuable assistance rendered to the Branch during the past year by Mr. Alex. Munro, Superintendent of the City's Parks Department, for the keen interest he and his workmen evinced in his supervising and their carrying out of the work of re-landscaping the grounds around this Red Cross House.'

"We are indeed grateful to you and all the members of your staff for this splendid co-operation."

This department has also assisted in the upkeep of the grounds at 707 - 13th Avenue West, and in this connection received the following commendation:

"The Officers and Executive Committee of the Calgary Branch, Canadian Red Cross Society, have requested me to extend to you and the members of your staff, their grateful thanks and appreciation for your continued interest in the grounds at Red Cross House. Your kind contribution of shrubs and trees has greatly improved the appearance of the gardens."

"Thank you again for your co-operation and courtesy in this respect."

In appreciation of the department's interest in the advancement of recreation for all ages, the following note of thanks was received by our Superintendent:

"During the past year the Physical Education Department of the Calgary School Board has received a very great deal of service and co-operation from your department, and I wish to express my thanks for the prompt and sincere response you and your staff have given all of our requests."

"We have made extensive use of Mewata Stadium, and I wish to compliment you on the good job you have done in keeping this valuable area in good shape in spite of the use it receives. Without access to the Stadium, we would be unable to offer the program we plan each year."

"To you, Mr. Garnett, Mr. Daines, Mr. Houghton and your stadium staff, I extend my thanks with all sincerity."

RECOMMENDATIONS AND SUGGESTIONS:


In view of the continued expansion of this department, I feel that the time has arrived for the appointment of two general foremen, one to take charge of the district north of the Bow River, and the other the district south of the Bow River. More detailed supervision of the smaller projects and problems would be assured, while the Ass't. Superintendent and Superintendent will find more time to devote to supervision of the larger projects which are carried out each year and the various other duties which are required of heads of departments.

You are all aware of the fact that most of our burials take place at Queen's Park Cemetery. As the cemetery expands, it will be well nigh impossible, physically and economically, to keep the road open for each burial in the extreme cold spells during the winter months. A mortuary for commitals is therefore a necessity, as is the construction of rest rooms. These recommendations require serious consideration.

Dressing room, lavatory and locker facilities are prime requisites at Riley Park because of the large numbers of children who use the pool. Since it was deepened and the centre island removed, two years ago, the attendance has shown a great increase.

At this time, I would like to extend my sincere thanks to those who have so fully co-operated with this department during the past year, including the outside members of the department, the office staff, members of the Safety Committee, the Engineers' Department, Land Department, and Town Planning Department. Please accept my heartfelt thanks for your wonderful co-operation during the past season.

Respectfully submitted,



Superintendent of Parks, Cemeteries  
and Recreation Department.



RECREATION DIVISION ACTIVITIES

- 1951 -

*Everybody*

has an interest in good recreation. The entire community will benefit from a community-wide recreational program - even those who do not participate in an active manner themselves.

The City of Calgary during 1951 embarked on a new phase of recreation, with marked success. During the early months of the year, the indoor centre conducted in the Inglewood District, met a very definite need, and proved the value of such a centre in the city.

Under the direction of Mrs. J. Brewer, a graduate from the University of Toronto, the public recreation program within this area revealed the possibilities of a full program which provided activity for all age groups.

Keen interest was shown in Arts and Craft work and a heavy schedule of Physical and Sport activities was carried out, with a group of leaders for the physical program being provided through the National Physical Fitness Act, which is controlled by the Provincial Department of Education.

During the month of April, a closing demonstration was presented in the Gymnasium of Colonel Walker School, which had been the main centre of operations. An audience of some two hundred people enjoyed the program which also included a short talk by His Worship, Mayor D. H. Mackay, and Commissioner V. A. Newhall. Several members of the City Council were present and took a keen interest in the various phases of the display, which revealed the measure of success attained in such a short period.

It was with great regret that we received the advice from the Public School Board, that Colonel Walker Gymnasium would not be available for a similar use during the latter part of the year, due to alterations being made at the school. Lack of another suitable building in East Calgary districts made it necessary to discontinue this program for the balance of the year.

Provision was made in the 1951 estimates to finance a second recreation centre for the fall term and although we were unable to carry out the program in the east end of the city, we were successful in obtaining the use of the gymnasia in four of the city schools, two of which were in the northwest area, and two in the southwest area, and each of which were made available two evenings per week.

Mrs. Brewer was again engaged to direct the activities at the northwest district, which served the communities of Capitol Hill and West Mount Pleasant, the Community Clubs of these districts giving splendid support to the whole program.

In co-operation with the West Mount Pleasant Club, the program included Teen-age dancing, Adult Square Dancing, Tap Dancing classes, Leather Craft and Woodwork classes, and a Teen-age Drama Group studying as a Children's Theatre. The physical fitness program at this location included boxing, tumbling, box-horse, and keep-fit groups.

Activities in the Capitol Hill district were carried on at four locations, using the gym at King George School for the larger classes, while craft work and play-school programs were carried on in the church halls of Saint Cyprian's Anglican Church and Pleasant Heights United Church. A Ladies' Keep-fit program was conducted in the Clubhouse of the Capitol Hill Community Club, this being placed at our disposal without charge.

The northwest district served by the aforementioned centres covered that portion of the city lying north of Sixteenth Avenue North, and from Second Street Northwest to the westerly boundaries of the city.

With a view to rendering a similar service to the southwest section of the city, two schools were rented, one each Monday and Wednesday, and the other each Tuesday and Thursday.

Due to conditions which will be referred to later in this report, we were unable to obtain the services of a supervisor to take charge of the southwest district in the manner which Mrs. Brewer had done in the northwest, therefore it was necessary to engage two leaders, one to take charge of each school for two evenings per week.

Miss Kathleen Sykes, who for several years has worked for the Recreation Division as a district Playground Supervisor during the summer months, was approached to undertake the leadership at Richmond School at which she is a teacher, on the staff of the Public School Board. Miss Sykes has arranged a very good program on Monday and Wednesday, with a children's dancing class in the Glengarry Branch of the Public Library each Saturday morning.

In conjunction with Miss Sykes, Miss Jean Duckles, also an employee of the Public School Board, and who directs the physical program for girls at the Glengarry School, agreed to direct our program at the Glengarry Centre, with a large attendance being registered.

Although these two young ladies were paid only on the basis of two evenings per week, they both assisted each other in the leadership of the activities on the four evenings each week. The Recreation Division officials appreciate greatly the extra-mile activities of both these employees.

The operation of these centres, though having a good measure of success, was not carried on without some problems. As schools are not available five evenings in succession, it is necessary to use two buildings on separate nights, thereby requiring two sets of equipment, or transporting of same from school to school each day.

It would be much more satisfactory if the schools were available between the hours of five and seven p.m., to enable us to conduct some program for the junior groups, but the school janitors are not at the buildings during these hours, therefore the period of activity is reduced considerably. Very few children under ten years of age are allowed out to participate in this form of recreation after seven p.m., and I feel that we are unable to serve this age group in the manner we would like to.

Communities interested in such a recreational program should be encouraged to embark on a building scheme, similar to those in effect in Vancouver or Edmonton and other western cities. Such a plan would provide space for Day Nursery Schools, Craft classes, Art Groups, and Drama and Music groups. Facilities could also be provided for inter-community activity, such as sport events, debating clubs, and contests of various kinds, within the community, independent of the local school buildings, and placed at the disposal of the Centre Director or Supervisor, who would organize a complete schedule of activities for all age groups commencing with pre-school and mothers' activities at 2:00 p.m. and continuing through to teen-age and adult activity until 10:00 p.m.

With the contemplated expansion of Supervised Recreation activities during the winter months at several locations in Calgary, it will be necessary to seek trained employees capable of carrying on this work. It is not to be expected that personnel can be engaged each year on a part time basis of a five-hour day, nor that local school teachers will be available to conduct a program in the manner that activities have been carried on this year.

I would therefore recommend that consideration be given to engaging trained employees who could serve as Centre Directors in the winter time during the months October to April, and render dual service as Specialists in the Supervised Playgrounds during the months of June, July and August, leaving the month of September to prepare winter plans and the month of May for vacation time.

In giving time to supervision of these centres, your Director has been called upon to spend at least three evenings per week visiting School locations, and supervised skating areas at which we have personnel employed, advising directors, and doing liaison work between the public groups. These hours, which frequently include Saturday, are in excess of the regular office hours of 9:00 a.m. to 5:00 p.m.

In the summer months it is also necessary to devote four evenings per week from seven p.m. to visiting of supervised playgrounds to give direct supervision to many of the twenty-four supervisors who are engaged in this work, and with whom it is impossible to visit each day to discuss their problems, during the regular office hours, whilst attending to regular office routine, and the preparation of the plans for new sites and supervising the construction program.

#### SUPERVISED PLAYGROUNDS:

Although the weather was not very satisfactory for playground activities, the summer program was carried out and as the statistical report attached hereto will reveal, a large number of children took advantage of the services offered during the school vacation period.

Difficulty was again encountered in finding the personnel to supervise these areas, as persons with university training in this field will not work for the salary paid in Calgary. The majority of the persons employed were senior High School students or first-year University undergraduates.

The participation for 1951 was 101,711 as compared to 83,476 in 1950, whilst the actual attendance in 1951 was 60,142 as compared to 47,885 during the 1950 season. These figures are taken from the actual count of persons present at 3:00 p.m. each afternoon and at 7:30 p.m. each evening, and submitted on the daily report form of each playground.

Touch football was introduced to the Calgary playgrounds for the first time, and a beautiful trophy obtained as an award to the winning team. Unfortunately adverse weather in the latter part of August prevented the play-offs being completed and a championship team was not declared. 5418 boys participated in this type of sport.

Basketball is still the outstanding game with a participation of 14,234, with fastball running second with 10,591 taking part.

Craft work, which includes clay modelling, basketry, plaster casting, wool-craft and string braiding, occupied 11,940 youngsters with a very useful activity.

Through the courtesy of the Calgary Transit System, teams from the various playgrounds crossed the city to participate in inter-playground leagues of Volleyball, Basketball, and Softball. This type of activity creates outstanding interest and the playground spirit is keen when competition is under way for the numerous trophies which have been set up from time to time in these sport groups.

336 girls were taught the fundamentals of swimming at the Mewata Swimming Pool, this service being provided without charge to the persons constituting the classes. I regret that the swimming instructor closed the season without completing the records and indicating how many candidates were successful in passing the final test as set forth by the division.

2976 youngsters were given free swims in a program which enabled each playground to visit the Mewata Pool for a two-hour period, between 9:00 a.m. and 11:00 a.m. one morning each week for six weeks. The season drew to a close with a closely contested swimming competition for the two shields which were donated by the Alberta Council on Child and Family Welfare.

Rain on successive days in the latter part of August prevented the running of the annual Track and Field meet. The Supervisors and children were very disappointed, and it was impossible to declare champions in the usual manner, for the trophies which are awarded for highest points scored by the playgrounds for Boys' and Girls' classes, and for the new shield which was presented by the Alberta Council on Child and Family Welfare for the playground scoring the highest number of points, including all events.

A splendid display of craft work which was done at the various playgrounds was presented at the Mewata Recreation Hut, and awards were presented for the best workmanship in each class. A total of 14 classes were set up with three prizes in each class, covering three age groups.

A special note of appreciation should be extended to Mrs. Maude Riley, and the Alberta Council on Child and Family Welfare, for providing the awards which were presented to the successful contestants who participated in the Swim meet and Craft competition.

We are also grateful to Captain Wm. Phillips, First-aid Instructor to the Calgary Fire Department and to Chief Skene, by whose permission Mr. Phillips arranged to conduct classes in first-aid for the supervisory staff, before the playgrounds opened for the season.

PARTICIPATION STATISTICS, 1951.

Baseball	10,591
Basketball	14,234
Volleyball	2,326
Touch Football	5,413
Paddle Tennis	1,907
Soccer	53
Lawn Tennis	155
Play Apparatus	17,126
Athletics	2,027
Gymnastics	1,606
Group Games	11,940
Paddling	4,320
Swimming	2,737
Handicrafts	16,247
Music	356
Dancing	66
Story Telling, Drama	3,660
Hikes	582
Picnics	552
Educational Tours	711
Sundry	3,864
Art Classes	397
	<hr/>
	101,375
Swimming, Free Lessons,	<hr/> 336
	<hr/> 101,711
	<hr/> <hr/>

PLAYGROUND CHAMPIONS

Basketball:

Senior Boys	Rotary	Don Mackay Trophy
Junior Boys	Mewata	R. H. Weir Trophy
Junior Girls	Mewata	F. J. White Trophy

Fastball:

Senior Boys	No Competition	F. E. Osborne Trophy
Junior Boys	Crescent	R. W. Ward Trophy
Juvenile Boys	Riley	Child & Family Welfare Trophy
Junior Girls	Tuxedo	H. R. Chauncey Trophy
Juvenile Girls	Grand Trunk	Henry Birks & Sons Trophy

Volleyball:

Junior Division	Tuxedo	J. A. Wannop Trophy
-----------------	--------	---------------------

Track and Field:

Boys' Aggregate	No competition	G. H. Webster Shield
Girls' Aggregate	due to inclement	Alex Ross Shield
Grand Aggregate	weather.	Child & Family Welfare Shield

Swim Meet:

Boys' Aggregate	Crescent	Child & Family Welfare Shield
Girls' Aggregate	Riley	Child & Family Welfare Shield
Tuch Rugby	No competition	Manning Eggleston Trophy

STATISTICAL REPORTS ON RECREATION CENTRES

TOTAL ENROLLMENT per season .....482  
 TOTAL ATTENDANCE per season .....4420  
 TOTAL PARTICIPATION per season ..... 4519

AGE GROUP ACTIVITIES IN ORDER OF POPULARITY

<u>ADULTS</u>	<u>TEEN-AGERS</u>	<u>JUNIORS (6-12 yrs.)</u>	<u>PRE-SCHOOL</u>
Leathercraft	Parties & Dances	Games and Tumbling	Games
Keep-fit	Basketball	Models	Skating
Square dancing	Learn to Dance	Boxing	
Badminton	Volleyball	Tap Dancing	
	Judo	Drama	
	Table Tennis	Lead-up games	
	Aid to Beauty	Skating	
	Boxing	Making Doll Clothes	
	First-aid		
	Badminton		
	Tumbling		

INSTRUCTORS

HEALTH & RECREATION LEADERS

Skating  
 Montez Vance

Girls' Basketball, Tumbling, Badminton and Juniors:  
 (Monday evenings)  
 Lou McRoberts

VOLUNTEER LEADERS

First-aid  
 Don Sawatsky  
 1933 - 8 Ave. East.

Aid to Beauty  
 Estella Ellis  
 (Cosmetic Dep't. - The Bay)

INSTRUCTORS, Cont'd.

Boxing: (Colonel Walker & Trinity)

Amby Gregg

Girls' Basketball, Tumbling  
and Juniors (Tuesday evenings)

Joan Austin

Learn to Dance, Tap Dancing,  
Games, 8-10 yrs.

Peggy Gregg

Leathercraft:

Mike Teuchuch

328 - 6 Ave. E., (Ph. 21839 - daytime)

Judo:

Felix Leew

528 - 27 Ave. N. E.,

Judo Assistant and Assistant in

Boys' Basketball - Jack Usher

1921 7 Ave. E.,

Drama:

Audrey Spencer

1207 - 8 Ave. E.,

PARTICIPATION STATISTICS  
CITY RECREATION CENTRES

Season 1950 - 1951

Play School	170
Beginners Skating	73
Figure Skating	39
Boxing	255
Wrestling	47
Drama	126
Keep-fit, Ladies	180
Tap Dancing	528
Folk Dancing	98
Group Dancing	316
Basketball & Tumbling, Girls	347
Basketball & Tumbling, Boys	524
Leathercrafts	292
Gymnastics	71
Tennis	69
Model Building	10
Pingminton	20
Girls' Activities	102
Christmas party	33
Orchestra, Listening to Records	63
<hr/>	
Total Participants	3,364

NEW LOCATIONS:

New play lots and ball fields were placed in service during 1951, playground equipment being installed at four locations and new backstops being erected on seven new fields.

Grading at both old and new sites was carried out with a new style of field introduced at the Mission, Killarney, Richmond, and Glengarry sites. This system of preparation will provide a satisfactory playfield in the summer, and a good open skating area for winter use.

Lack of major equipment, and the extremely wet summer prevented the completion of the total construction program planned for 1951, but we expect that an early start will be made in the spring of 1952, which will enable us to use these areas for the 1952 season.

SKATING AND HOCKEY RINKS:

Five new portable type hockey rinks were constructed and placed in service, three of which were erected in new areas and two replacing worn-out equipment.

108 sheets of ice, which included boarded rinks and open skating areas, were flooded for the 1951-52 season. Three flooding trucks being used to cover the city and flooding each rink once per week, weather permitting.

The Parks Department overhead loader was adapted with an eight-foot wide snow bucket which cleaned all the boarded hockey rinks of the excessive amount of snow which fell during the winter months, and a smaller tractor, equipped with a snow blade, was rented to clean the open skating areas after each snow storm.

Four large areas were maintained by the department at which dressing rooms and facilities were available to the public.

Mewata Hockey Park was used exclusively as a hockey area, which could be rented by commercial teams, or by community clubs having no home facilities for league games.

Mountview Park held one hockey rink suitable for league games, complete with lighting for night use. One hockey rink without lights was thrown open to the children of the neighborhood, and a sixth of a mile long race track was available without cost, to any person desiring to use it.

Buffalo Park and Mount Pleasant Rotary Parks each had one lighted hockey rink, both of which were available by permit for league games, and also one unlighted rink for use by the children without charge, and one pleasure skating area.

No charge was made for dressing room facilities at these locations.

Eleven community clubs operated hockey and skating rinks at their own expense on City park sites, with complete control of the activities being under the clubs' jurisdiction.

#### C.C.R.A.

The Calgary Community Recreation Association conducted a year-round program of sports on the parks in the communities of the city.

34 Hockey clubs operated in four divisions,  
Fastball clubs in six divisions,  
12 Basketball clubs operated in two divisions.

The Basketball clubs played all games at the Municipal Recreation Hut, which is situated in Mewata Park, on a rental charge of \$1.50 per game, one hour being allowed to play each game.

#### CALGARY CENTRAL HEALTH AND RECREATION COMMITTEE:

Your Director and his assistant have been elected Chairman and Secretary-treasurer respectively, of the local committee which directs the activities in Calgary under the National Physical Fitness Act. It is expected that a much closer co-ordination will be obtained as a result of these officers being in the forefront of the recreational movement in this city.

57 Recreation classes are being conducted in Calgary under the National Physical Fitness Act, at the present time, and approximately 85 leaders who are certificated under the act are residents of Calgary, many of which could be organized as leaders in the recreational field in the event of a national emergency, such as is being considered by the local Civil Defence organization.

#### RILEY PARK SWIMMING POOL:

The removal of the island from the centre of the Riley Park pool enlarged this popular swimming area by fifty per cent, but the lack of dressing rooms large enough to meet the need at such a large centre was a discouraging factor, and many persons who would have delighted to use this pool refrained from doing so.

For two years we have been waiting for the promised facilities, and in the hope that these would be forthcoming, the old dressing rooms were removed. The time has now arrived that the city should undertake to build the new dressing room accommodation, and encourage the public to use to the fullest advantage this natural setting as a children's swimming hole, and thereby reduce the congestion at the Municipal Pool.

If the proper facilities were erected at this location, a swimming supervisor could be employed here, and a full-time program be in operation during the daylight hours. As it is, we are encouraging many young folks to enter the pool without supervision, and the risk of accident is evident. Fortunately, no serious accident has occurred at this location, although it has been in operation for many years.

As an insurance against the loss of personal clothing and effects, I feel that a suitable check room should be included in the new structure, and that some person, possibly a pensioner, be permitted to operate the same as a concession. This person would be required to keep the dressing rooms clean, and handle the checking for the revenue received therefrom.

#### PUBLIC RELATIONS:

Much more satisfactory public relations are carried out by the Recreation Division since the stenographer has been added to the department, and when this young lady has completed a year in the service, and is aware of the various seasonal activities, the organization doing business with this division will have no complaint as to delay in the issue of permits, contracts, or matters which require immediate attention.

Mr. Houghton and myself undertake the duties of liaison officers with the major sport groups operating in the city, and as far as is possible, attend the majority of meetings held which would have any bearing on playfields, sport grounds, ice facilities and recreational needs.

#### SCHOOL GROUNDS:

During 1950 a very satisfactory arrangement was entered into with the Public School Board for the control of school play-areas after school hours. This again was in operation during 1951, and all permits for the use of such areas were issued through this office.

#### LOOKING FORWARD:

The report to the present has been one of retrospection, but I feel that some suggestions for the coming year should be made at this time.

1. Office Space: With the re-organization of many of the city departments, there has been much change in the city hall, and although many of the locations which we suggested for office space have now been taken over by other departments, the crowded conditions in the Recreation Office still exist.

If it is impossible to provide us with better accommodation within the city hall, I would suggest that much more satisfactory office space could be provided either at the Mewata Stadium or the Mewata Recreation Hut, where ample space is available, and which would reduce the congestion at the City Hall.

2. Playground Supervisors: To enable us to obtain the services of more experienced playground supervisors, I would recommend that the salary schedule in effect in the city of Edmonton be applied here, with a minimum of \$150.00 per month instead of the present daily rate of a maximum of \$6.00, over a five-day week.

3. In view of the increasing pressure of business falling on your Director of Recreation, as indicated previously in this report, I wish to recommend that the present Assistant Director undertake the work of Supervisor of Playgrounds and Recreation Centres, which operate during the afternoon and evening hours. This would assure closer supervision to those employees who are not readily reached, while our attention can be given to the normal office routine and the planning of work on new areas.

4. In view of the attendance at some of the larger playgrounds, play leaders of high school age could be employed to assist the Playground Supervisors at a salary of twenty dollars per week, to direct the activities of the younger age-groups, thus relieving the senior leader to conduct the activities of the older children.



MINOR LEAGUE RUGBY FOOTBALL:

I have been advised that several local business men are interested in organizing a football league comprised of boys between the ages of ten and fifteen years. It is apparent that plans have gone ahead on this venture without any representative consulting this division or the Parks Department as to the amount of space available for this type of activity.

A few days ago, a telephone call was made to this office stating that ten practice fields and five dields for regular league games would be required. As this game requires a space of a minimum of 60 yards by 80 yards, or 160 feet by 240 feet, there are very few locations at our disposal large enough to set aside this much area without restricting other activities now carried on.

As the average city block is 260 feet wide by 500 feet long, nine fields suitable for minor league football, if placed in a concentrated area, would require three full city blocks with three fields to each block running parallel to each other, with a dividing strip of 5 feet between the playing areas, reaching from property line to property line, unless the adjacent streets were closed.

I feel therefore that the Town Planning Board should be requested to survey this matter and advise if such fields could be made available for this activity.

BAND CONCERTS:

After a lapse of one year, the City responded to the request of the local musicians and provided a small sum of money, to re-imburse the band of the Calgary Musicians Protective Association for two performances which were played in St. George's Island Park, and also a grant paid to the Band of the Salvation Army Vancouver Temple Corps, which visited Calgary while on a tour of eastern British Columbia and western Alberta.

The Vancouver Band performed at the Island on Sunday, July 9th, and gave a very splendid program which was well received, giving a variety of Instrumental solos, Male Choir, and full band numbers.

The Calgary Musicians Protective Association Band gave two performances for which they were paid, and two at their own cost at St. George's Island Park, and also played programs at the Colonel Belcher Hospital and the Provincial Hospital at Keith.

The local Salvation Army Band rendered summer programs without charge, two at Keith Sanatorium, and one at the General Hospital. This band also rendered a program of music of two hours' duration outside the Palliser Hotel, and in spite of the bitter weather, the national airs which were performed brought much favorable comment from the public and the press.

The Salvation Army Band also placed its services at the disposal of the Committee in charge of the Civic Decoration Service in August, both at the Cenotaph and the Union Cemetery. Christmas programs were performed at Keith Sanatorium, Holy Cross Hospital, Grace Hospital, Sunset Lodge, and the Scottish Nursing Home. Suitable arrangements could not be made to provide a program for the patients at the Calgary General Hospital due to lack of space inside the building, and the temperature being 35 degrees below zero, it was impossible to perform outside at that season of the year.

COURTESIES:

I would like to take this opportunity of expressing to all civic departments and officials, a sincere thanks for their co-operation during the past season, for without their assistance, it would have been very difficult to render the service to the citizens of Calgary - a service which has been our privilege to render.

Also, to the many citizens who have given freely of their time to assist as officials at the various sport events held under the auspices of this division, we extend our sincere appreciation, and trust that the young folk of this city will become better citizens of tomorrow as a result of this service.

Respectfully submitted,

MAJOR PLAYGROUNDS CONTAINING A MINIMUM OF SIX  
PIECES OF APPARATUS

1.	Bankview Playground	23rd Ave. & 17th St. W.,
2.	Booth Memorial	17th Ave. & 29th St. W.,
3.	British American Playground	9th Ave. & 20th St. E.,
4.	Central Rotary	16th Ave. & 11th St. W.,
5.	Centre St. Playground	17th Ave. & Centre St. South,
6.	East Calgary Rotary	9th Ave. & 16th St. E.,
7.	Inglewood Playground	22nd Ave. & 16A St. S. E.,
8.	Killarney Park	21st Ave. & 26th St. W.,
9.	Mewata Park	5th Ave. & 11th St. W.,
10.	Mt. Pleasant Rotary	6th Ave. & 1st St. N. E.,
11.	Mountview Playground	18th Ave. & 4th St. N. E.,
12.	Ogden Park	74th Ave. & 24th St. S. E.,
13.	Regal Terrace	8th Ave. & 6 St. N. E.,
14.	Riley Park	6th Ave. & 12th St. N. W.,
15.	South Calgary Rec. Ground	30th Ave. & 16th St. S. W.,
16.	St. George's Island	9th Ave. & 11th St. E.,
17.	Victoria Rotary	12th Ave. & 6th St. E.,
18.	West Mount Pleasant	22nd Ave. & 6th St. N. W.,

MINOR PLAYGROUNDS CONTAINING FROM THREE TO FIVE  
PIECES OF APPARATUS

1.	Belfast	17th St. N. E.,
2.	Bowview Playground	8th Ave. & 17th St. N. W.,
3.	Bridgeland Extension	Child Ave. & Edward St.,
4.	Bridgeland Playground	4th Ave. & 9A St. N. E.,
5.	Capitol Hill Park	20th Ave. & 15th St. N. W.,
6.	Chinese Mission Playground	1st Ave. & Centre St. S.,
7.	City Hall Playground	8th Ave. & 3 St. E.,
8.	Crescent Park	11th Ave. & 3rd St. N. W.,
9.	Elbow Park Playground	39th Ave. & 4A St. S. W.,
10.	Elbow Swimming Pool	30th Ave. & Elbow Drive,
11.	Grand Trunk	6th Ave. & 23rd St. N. W.,
12.	Grandview Rec. Grounds	Burns Ave. & Alexander St.,
13.	King George Playground	22nd Ave. & 9A St. N. W.,
14.	Lower Sunalta	11th Ave. & 16th St. W.,
15.	Millican Playground	66th Ave. & 19th St. S. E.,
16.	Mission Playground	24th Ave. & 2nd St. S. W.,
17.	National Playground	11th Ave. & 11th St. E.,
18.	North Balmoral	36 Ave. & 2 St. N. W.,
19.	Parkhill Athletic Grounds	38th Ave. & 1st St. S. W.,
20.	Rosevale Park	34th Ave. & 7th St. S. W.,
21.	Roxboro	30th Ave. & 1st St. W.,
22.	South Mt. Royal	Prospect Ave. & 10th St. W.,
23.	Sunnyside School	1st Ave. & 7th St. N. W.,
24.	Sunnyside Playground	Boulevard & 9A St. N. W.,
25.	Tuxedo Park	30th Ave. & 1st St. N. E.,
26.	Union Milk Playground	5th Ave. & 1st St. E.,
27.	Victoria Playground	15th Ave. & 3rd St. E.,
28.	West Hillhurst	2nd Ave. & 21st St. N. W.,
29.	Westmount Playground	Broadview Road & 16th St. N. W.,
30.	Wireless Hut, No. 2,	16th Ave. & 13th St. N. W.,
31.	Winston Heights	27th Ave. & 4th St. N. E.,

RECREATIONAL SITES DEVELOPED, OR IN PROCESS OF DEVELOPMENT,  
WITH SOCCER, RUGBY, OR BASEBALL FACILITIES.

1.	Bankview	23rd Ave. & 17th St. W.,
2.	Bowview Rec. Grounds	6th Ave. & 19th St. N. W.,
3.	Bridgeland Rec. Grounds	Blvd. & 11th St. N. E.,
4.	Capitol Hill Park	20th Ave. & 15 St. N. W.,
5.	Crescent Ladies' Ball Park	9th Ave. & 2nd St. N. W.,
6.	Earl Grey	Dorchester Ave. & 8th St. W.,
7.	Elbow Park School	38th Ave. & 7 St. W.,
8.	Glengarry	17th Ave. & 29th St. W.,
9.	Grandview Rec. Grounds	Burns Ave. & Ramsay St.,
10.	Grand Trunk	6th Ave. & 23 St. N. W.,
11.	Hillhurst Athletic Park	5th Ave. & 12th St. N. W.,

Recreational Sites, Cont'd.

12.	Killarney Park	21st Ave. & 26th St. W.,
13.	Manchester Rec. Grounds	57th Ave. & 1st St. S. W.,
14.	Mewata Park	5th Ave. & 11th St. W.,
15.	Mountview Rec. Grounds	18th Ave. & 4th St. N. E.,
16.	Mt. Pleasant Rotary	6th Ave. & 1st St. N. E.,
17.	Municipal Baseball Park	14th Ave. & 6th St. N. E.,
18.	Ogden Rec. Grounds	74th Ave. & 22nd St. S. E.,
19.	Parkdale	5th Ave. & 27th St. N. W.,
20.	Parkhill Rec. Grounds	39th Ave. & 1st St. S. W.,
21.	Richmond Park	26th Ave. & 28th St. S. W.,
22.	Rosedale	13th Ave. & 9th St. N. W.,
23.	Rosevale Park	32nd Ave. & 8th St. W.,
24.	St. George's Island	9th Ave. & 11th St. E.,
25.	South Calgary Park	32nd Ave. & 15th St. S. W.,
26.	Tuxedo Park	30th Ave. & 1st St. N. E.,
27.	Victoria Rotary	12th Ave. & 6th St. E.,
28.	West Mt. Pleasant Rec. Grounds	22nd Ave. & 5th St. N. W.,

HOCKEY AREAS

1.	Parkview	23rd Ave. & 17 St. W.,
2.	Bowview	6th Ave. & 19th St. N. W.,
3.	Boys' Town	8th Ave. & 5th St. E.,
4.	Brewery	9th Ave. & 14th St. E.,
5.	B.R.A.A.	Riverside Blvd.,
6.	Capitol Hill	21st Ave. & 15th St. N. W.,
7.	Colonel Walker	22nd Ave. & 16A St. E.,
8.	Connaught School	12th Ave. & 10th St. W.,
9.	Crescent Park	11th Ave. & 2nd St. N. W.,
10.	Elboya	Park Ave. & 4th St. W.,
11.	Glengarry School	17th Ave. & 29th St. W.,
12.	Harvetta Heights	Valleyfield
13.	Hillhurst Park	Hillhurst Park
14.	" "	" "
15.	Inglewood	28th Ave. & 17A St. E.,
16.	King George	22nd Ave. & 9th St. N. W.,
17.	Lower Sunalta	11th Ave. & 16 St. W.,
18.	Manchester	56th Ave. & 1A St. S. W.,
19.	Mewata Stadium	Mewata Stadium
20.	" "	" "
21.	" "	" "
22.	Mewata Compound	6th Ave. & 11th St. W.,
23.	Millican	Millican
24.	Mills Estate	17th Ave. & 8th St. E.,
25.	Mission	25th Ave. & 2nd St. W.,
26.	Mountview	18th Ave. & 4th St. N. E.,
27.	" "	" "
28.	Ogden	Ogden
29.	Parkview	26th Ave. & 3rd St. E.,
30.	Renfrew	8th Ave. & 6th St. N. E.,
31.	Richmond Park	26th Ave. & 28th St. W.,
32.	Riverdale Ave.	Riverdale Ave., (Extreme W. End)
33.	Rosevale	34th Ave. & 8th St. W.,
34.	Rosedale	10th Ave. & 9th St. N. W.,
35.	Rotary Park	6th Ave. & 1st St. N. E.,
36.	" "	" "
37.	Roxboro	30th Ave. & 1st St. W.,
38.	Scarboro	Scarboro Ave. & Stockton St.,
39.	South Calgary	30th Ave. & 14th St. W.,
40.	South Mt. Royal	Prospect Ave. & 10th St. W.,
41.	" " "	" "
42.	Sunnyside School	2nd Ave. & 7th St. N. W.,
43.	Technical School	13th Ave. & 11th St. N. W.,
44.	Victoria Community	12th Ave. & 6th St. E.,
45.	Winston Heights	27th Ave. & 4th St. N. E.,

PLEASURE SKATING AREAS

1.	Bankview	23rd Ave. & 17 St. W.,
2.	Belfast	18A St. N. E.,
3.	Bonnybrook	Ogden Road, & 36th St. S. E.,
4.	Booth Memorial	15th Ave. & 29th St. W.,
5.	Bowview	6th Ave. & 19th St. N. W.,
6.	B.R.A.A.	Riverside Blvd.,
7.	Bridgeland Playground	4th Ave. & 9A St. N. E.,
8.	Broadview Road	16th St. N. W.,
9.	Capitol Hill	21st Ave. & 15th St. N. W.,
10.	Central Rotary	16th Ave. & 11th St. W.,
11.	Central Community	16th Ave. & 8th St. W.,
12.	Child Ave.,	Bridgeland Extension
13.	Chinese	1st Ave. & Centre St.,
14.	Crescent Park	11th Ave. & 2nd St. N. W.,
15.	East Calgary	11th Ave. & 11th St. E.,
16.	Elbow Park	39th Ave. & 4A St. S. W.,
17.	Elboya	Parl Ave. & 4th St. W.,
18.	Erlton	34th Ave. & Erlton Road,
19.	Glengarry School	17th Ave. & 29th St. W.,
20.	Grand Trunk	6th Ave. & 23rd St. N. W.,
21.	Harvetta Heights	Valleyfield,
22.	Hillhurst Park	Hillhurst,
23.	Hounsfield Heights	14th Ave. & 15th St. N. W.,
24.	Jefferies	11th Ave. & 10th St. E.,
25.	Jewish Community	17th Ave. & Centre St. S.,
26.	Killarney Park	21st Ave. & 25th St. S. W.,
27.	Lower Sunalta	11th Ave. & 16th St. W.,
28.	Manchester	56th Ave. & 1A St. S. W.,
29.	Mountview Home	16th Ave. & 5th St. N. E.,
30.	Mountview Playground	18th Ave. & 4th St. N. E.,
31.	Mountview, Speed Skating Area	" "
32.	No. 2, Wireless	16th Ave. & 14th St. N. W.,
33.	North Balmoral	36th Ave. & 2nd St. N. W.,
34.	Nurses Home	Murdock Road & 9A St. N. E.,
35.	Parthill	38A Ave. & 1A St. S. W.,
36.	Parkview	26 Ave. & 3 St. E.,
37.	Ree Heights School	Ree Heights
38.	Renfrew	8th Ave. & 6th St. N. E.,
39.	Richmond Park	26th Ave. & 23th St. W.,
40.	Rosedale Skating Rink	10th Ave. & 9th St. N. W.,
41.	Rosevale	34th Ave. & 8th St. W.,
42.	Rotary	6th Ave. & 1st St. N. E.,
43.	Roxboro	30th Ave. & 1st St. W.,
44.	St. Monica	St. Monica & 14th St. E.,
45.	7th Day Adventist	16th Ave. & 1st St. N. E.,
46.	Scarboro	Scarboro Ave. & Stockton St.,
47.	St. Anne's School	22nd Ave. & 9th St. E.,
48.	Sunnyside School	2nd Ave. & 6th St. N. W.,
49.	South Calgary	30th Ave. & 14th St. W.,
50.	Tecumseh	17th Ave. & 24 St. W.,
51.	Upper Hillhurst	2nd Ave. & 21st St. N. W.,
52.	Victoria Community Playground	17th Ave. & 3rd St. E.,
53.	Victoria Community	12th Ave. & 6th St. E.,
54.	West Mt. Pleasant	23rd Ave. & 5th St. N. W.,
55.	Winston Heights	27th Ave. & 4th St. N. E.,
56.	21st Ave. & 17A St. W.,	21st Ave. & 17A St. W.,
57.	14th Ave. & 5th St. N. E.,	14th Ave. & 5th St. N. E.,
58.	22nd Ave. & 22nd St. W.,	22nd Ave. & 22nd St. W.,
59.	14th Ave. & 25A St. W.,	14th Ave. & 25A St. W.,

PRESENT PARK FACILITIES

Name	Section	Location	Area in Acres	Use
Bankview Plot	8	19th Ave., bet 17 & 17A St. S. W.,	.33	Ornamental
Beaumont Circus	22	15th Ave. & 4th St. N. E.,	.5	Ornamental
Balmoral Circus	27	2nd St. & 19th Ave. N.W.	.58	Ornamental
Bowness Road Boulevard	17	Bowness Road	.3	Ornamental
Carlton Plot	9	Carlton St. & Council Way	.6	Undeveloped
Cartier Park	9	Cartier	5.4	Ornamental
Centre Street Slope	22	North bank of Bow from Centre St. Bridge to Langevin Bridge.	10.	Ornamental, but more or less natural.
City Hall Gdn.	15	7th Ave. & 2nd St. E.,	.25	Ornamental
Cliff Park	9	Cliff St. & 24th Ave. W.,	1.78	Undeveloped
Cliff Triangle	9	Cliff Street & 25th Ave.,	.3	Ornamental
Crescent Park	22	10th Ave. & 2nd St. N. W.	12.24	Ornamental and Recreation Area.
Earl Grey	9	Dorchester Ave. and 8th St. S. W.,	16.2	Recreation area, with small strip ornamental.
East Calgary Rotary Park	14	9th Ave. E., & 14 St.,	1.1	Combination recreational & ornamental area.
Elbow Drive Gdn.	9	Elbow Drive	.18	Ornamental
Elbow Park Car Loop	4	Elbow Drive	.3	Ornamental
Elbow River Walks	9	Elbow Drive	.8	Ornamental
Elboya District	4	Bet. Park & Lansdowne Ave., at 5th St. W.	.2	Horticultural
Elboya District	4	East by 5th St. W., south by 46th Ave.,	1.1	Horticultural
Garden Crescent	9	Elbow Drive	1.6	Ornamental
Gladstone Road Plots	21	13th St. and Gladstone Rd.,	.10	Ornamental
Glencoe Garden	9	Glencoe Road & 6th St. W.,	.26	Ornamental
Glencoe Triangle	9	Elbow Drive & 29th Ave. W.,	.23	Ornamental
Hidden Triangle	22	Centre A St. & 6th Ave. N.W.	.07	Ornamental
Hillside, Crescent Heights	22	4th St. N. W., south of Crescent Road	3.09	Hillside.

Island Plots	9	8th St., Mount Royal	.2	Ornamental
Killarney Park	7	20th Ave. & 26th St. W.,	3.1	Recreation and Ornamental Area.
Kiwanis Garden	16	14th Ave. & 11th St. W.,	.35	Ornamental
Knob Hill	8	22nd Ave. & 22nd St. W.,	3.75	Undeveloped
Langevin Bridge Approaches	15	4th Street East	1.2	Ornamental
Lindsay Estate	4	34th Ave. & 4th St. S. W.,	12.	Undeveloped
Louise Bridge Approaches	16	Louise Bridge	1.7	Ornamental
Lower Sunalta Triangle	17	Sharon Ave. & 17 St. W.,		Partly developed. Ornamental
Memorial Drive	14,15,16, 21, & 22.	North bank of Bow River, Louise Bridge to St. Geo. Is.	30.	Park Driveway.
Memorial Park	15	12th Ave. & 2nd St. W.,	4.45	Ornamental
Mewata Blvd. & Triangles	16	4th & 5th Ave., Mewata Blvd.	.83	Ornamental
Millican Park	36 C.S.	East bank of Bow, in Millican Estate	15.	Undeveloped
Mission Park	10	Mission Road	3.	Natural
Mt. Pleasant Rotary Park	22	4th Ave. & 1st St. N.E.	9.6	Recreation and Ornamental Area.
Mountview Park	27	16th Ave. N. E., & Edm. Tr.	7.2	Recreation and Ornamental Area.
Park Reservation on banks of Elbow.	4	All City-owned vacant land on both sides of Elbow, 3 to 6 Streets West.	3.	Undeveloped
Premier Way	9	Premier Way & 8th St. W.,	.04	Ornamental
Princess Island	22	Bow River, 4th Ave. W.,	20.	Undeveloped
Superior Ave. Plots	17	Intersection, Superior Ave. and Scotland St.,	1.4	Ornamental
Tenfrew Park	23	Reader Crescent	.8	Ornamental
Rideau Park	9	30th Ave. & 4th St. W.,	6.	Hillside, Natural Park.
Rideau Park Garden	9	Rideau Road & 5th St. W.,	.14	Ornamental
Biley Park	21	5th Ave. & 10th St. N.W.,	20.	Ornamental
Riverdale Ave. Plot	4	Riverdale Ave. & 8th St. S.W.	.05	Ornamental
Roxboro Park	10	Roxboro Glen Rd., & 30th Ave. S. W.,	9.85	Natural Park and Recreation Area.
Scarboro Rockeries	17	Scarboro Ave.,		Ornamental

Scotland St. Triangle	17	Scotland Street	.05	Ornamental
Short St. Plot	17	Sunalta	.13	Ornamental
South Calgary Park	8	30th Ave. & 14th St. W., 14.		Ornamental and Recreation Area
South Mount Royal Park	9	Montcalm St. & Quebec Ave., 3.66		Ornamental
Stanley Park	3	Stanley Park	10.	Natural (Undeveloped)
Superior Ave. Plat	17	Superior Ave. & Shelbourne	.8	Ornamental
Suspension Bridge End	9	Rideau Road & 31 Ave. W.,	.02	Ornamental
Sandy Beach	4		5.5	Natural (Undeveloped)
Sunnyside Slope	22	North bank of Bow, Sunnyside	8.	Hillside, undeveloped, ornamental.
Sunnyside Triangle	21	1st Ave. and 5A St. N.W.,	2.	Ornamental
Sunalta Park	17	Sudbury Ave.,	.15	Ornamental
Sunalta Ravine	17	17th Ave. & 22nd St. W.,	4.8	Undeveloped
St. Geo. Island	14	Island	46.	Natural, Ornamental and recreational.
Turedo Park	27		6.5	Rec. & Ornamental
Talon Ave. Gdn.	9	Talon Ave. & Carlton St.,	.37	Ornamental
10th St. N. W. Plot	21	10th St. 13 & 16 Ave. N.W.	8.72	Ornamental, not completed.
Tompkins Gardens	16	17th Ave. & 7th St. W.,	.14	Ornamental
Triangle Park	17	Senlac St. & Shelbourne	1.47	Ornamental
Ward Plot	17	17th Ave. W. & Scarboro	.19	Ornamental
Westmount Blvd.	17	N. W. of Bow, W. of Louise Bridge. (Undeveloped)	2.5	River Drive, also ornamental and recreation area.
West Mt. Pleasant	28	6th St. N. W. & 22nd Ave.,	5.2	Ornamental and recreation Area.
Winston Heights	27	27th Ave. N.E. & 4th St.	2.	Recreational and Ornamental
J. H. Woods Park	27	16th Ave. N. E. & Edm. Tr.	7.2	Recreational and Ornamental area. Speed-skating area and hockey rink.

1951 ACQUISITIONS

<u>Name</u>	<u>Section</u>	<u>Location</u>	<u>Area in acres</u>	<u>Use</u>
Altadore Parks	5	14th St. S.W & 42 Ave.S.W.	5.89	undeveloped
		15th St. S.W & 46 Ave.S.W.	2.4	"
		42nd Ave. SW & 16th St. S.W.	3.4	"
Fillarney	7	30th St. S.W. & 30th Ave. SW.	5.1	undeveloped
		Kerry Park - Kerry Park Rd. (Kerrydale Rd.)	.5	"
Renfrew Extension (Old Airport)		Richland Road Park	1.9	undeveloped
		Russet Road & 16 Ave. N.E.	18.1	"
Capitol Hill Extension		20th St. N.W. & 20th Ave. NW.	5.1	undeveloped
		Boulevard Strip & Ornamental Park. -- Banff Highway		
		strip approx.	1.8	
		ornamental park	0.6	
Brier Hill		12th Ave. NW. & 21st St. NW.	2.5	undeveloped
Windsor Park		Park area of one block - approx	.3	undeveloped.



PRESENT PLAYGROUND FACILITIES

<u>Name</u>	<u>Section</u>	<u>Location</u>	<u>Area in Acres</u>	<u>Use</u>
Bonnybrook Recreation Grd.	1	Bet. 15A & 16 St. S.E., & bet. 41st & 42nd Ave.	3.2	Recreation
Harvetta Heights	1	Bet. 22nd & 23rd Sts. S.E. & bet. 46th & 47th Aves.	3.0	Recreation
Renown Rink	1	38th Ave. S. E., bet. 16 & 16A Sts.	.65	Rink
Parkhill Recreation	3	Lane to Blk. 23 south of 38A Ave., to 40th Ave. S.E. by Stanley Rd.	3.2	Recreation
Stanley Park	3	W. of A. M. A. Camp to foot of 39th Ave. to Elbow River,	10.	Picnic Grds.
Britannia Sub. Div.	4	Uncharted Area	5.5	Recreation & Picnic
Britannia Sub. Div.	4	Sandy Beach, 150' each side of Elbow River		Picnic
Lindsay Estate	4	Uncharted Area	12.	Picnic and Park Site.
Elbow Park Playgrd.	4	39th Ave. & 4A St. S.W.,	.50	Playground
Elboya	4	E. half of Blk, E. by 4th St. S. W. South by Crescent Blvd.	6.	Recreation.
Elboya	4	Hillside, E. E. portion of Blk., bounded by Lansdowne Ave.	5.	Hillside, Winter sports
Elboya	4	Bet. 4A & 5th Sts., & 46th & 47th Aves. S. W.	2.	Recreation
Sifton Playgrd.	4	S. of 36 Ave. bet. 13 & 13A St. S. W.	1.6	Playground
Altadore	5	Bet. 37 & 38 Aves. & 16A St. S. W.	1.8	Playground
Altadore	5	Bet. 46 & 47 Aves. & 17 & 19 St. S. W.	1.82	Recreation
Richmond Rec. Grds.	7	W. by 28th St. E. by lane bet. 26A & 27 Sts. S. W., E. by 26th Ave. & S. by 28th Ave.	5.3	Recreation
Hillarney	7	Bet. 19 & 21 Aves., & 25A & 26 Sts. S.W.	3.1	Recreation & Ornamental
Glengarry	7	Bet. 17 & 19 Aves. & 29 & 30th Sts. S. W.		Recreation
South Calgary Park	8	Bet. 14 & 16 Sts. & 30 & 32 Aves. S. W.	14.6	Recreation & Ornamental
Bankview	8	Bet. 16A & 17 Sts. on 23rd Ave. S. W.	1.9	Recreation
South Calgary Play lot	8	Cor. 22nd St. & 30 Ave. SW.	.43	Play lot
Knob Hill	8	Bet. 25 & 26 Aves. on 20th St. S. W.,	1.93	Recreation
Knob Hill	8	Cor. 20th St. & 22nd Ave. SW.	.25	Playpen
Knob Hill	8	24th St. S. W., E. by 26th Ave., & S. by lane bet. 27 & 28 Aves.	2.18	Recreation

Rosevale	9	Bet. 32 & 34 Aves. & 7th & 8th Sts. S.W.	4.65	Recreation
Elbow Park	9	Elbow Drive bet. 29th and 30th Aves.	.8	Recreation
Mount Royal	9	S. of Dorchester Ave., E. of 8th St. W.,	16.2	Recreation & Ornamental
Mount Royal	9	10th St. W., s. of Prospect Ave.,		
Parkview	10	25th Ave. & 2A St. E.,	.55	Rink
Mission	10	24th Ave. bet. 1st & 2nd Sts. W.,		Recreation .82
Roxboro	10	Roxboro Glen Rd. under hillside	.78	Recreation
Erlton	10	34th Ave. & Erlton Rd.,	.34	Rink
Ramsay	11	Bet. Ramsay & Alexander Sts. & Burns & Margaret Ave.,	4.1	Recreation
Inglewood	12	9th Ave. E. and B.A. Ref. fence	1.04	Playground
Inglewood	12	Bet. 22 & 24 Aves. S. E. from 17th St. to lane, bet. 16 & 16A St.,	3.1	Recreation
Inglewood	12	Cr. 17A St. & 28 Ave. S. E.,	.41	Rink
Nose Creek	13	N. of Bow River, E. of 15 St. E.,	4.0	Leased to Mrs. Schwesinger.
Pierce Estate	13	N. & E. by Bow R. & W. by Calgary- Edm. Railway, S. by 17 Ave. E.,	35.31	Recreation
Mills Estate	14	10th St. E. bet. 11 & 17 Aves.	1.04	Rink (Jefferies)
Pierce Estate	14	9th Ave. bet. 14 & 15 St. E.,	.75	Rink
Brewery	14	Confluence, 9th E. & 17 Ave. at 15 St. E.,		Playground
Hospital	14	Villa lot 5, E. of Gen. Hospital	3.75	Undeveloped
Bridgeland	14	Fronting Memorial Drive, bet. 8th and 11th Sts. N. E.,	21.2	Recreation
Victoria	14	Uncharted Area, fronting on 12 Ave. E., 6 St. to Elbow R.	2.3	Recreation
Grandview	14	8th St. E. near 17th Ave.	.57	Rink
Pierce Estate	14	Cor. 11 Ave. & 11 St. E.,	.28	Rink
Pierce Estate	14	14th St. E. & St. Monica Ave.	.18	Rinks
St. George's Island	14	Bow River	46.0	Recreation
Union Milk	15	Corner 5 Ave. & 1 St. E.,	.32	Playground
City Hall	15	Cor. 3th Ave. & 1st St. E.,	.22	City Hall.
Chinese	15	Cor. Centre St. & 1st Ave. W.	.84	Playground & Rink
Victoria	15	Cor. 17 Ave. & 3 St. E.,	.41	Playground & Rink.

Victoria	15	Cor. 15 Ave. & 3rd St. E.,	.32	Clubhouse
Jewish	15	Cor. 17th Ave. & Centre St. S.,	.48	Playground & Rink
East Calgary	15	8th Ave. bet. 5th & 6th St. E.,	.45	Rink
Broadview	16	N. of Bow R., W. of Firehall to 14th St. N. W.,	.9	Undeveloped
Central Community	16	16th Ave. bet. 8 & 9 St. W.,	.23	Playground and Rink
Central Rotary	16	Cor. 16 Ave. & 11 St. W.,	.6	Playground and Rink.
Mewata Park	16	9th Ave. bet. 11 & 14 Sts. W.,	30.8	Recreation
Lower Sunalta	17	Bet. 10 & 11 Ave. on 16 St. W.,	1.55	Playground and rink
Scarboro	17	Salvador St. to Stockton St.	1.2	Rink
Sunalta	17	Bet. 14 & 15 Aves. and 16th & 17th Sts. W.,	1.85	Tennis Club & Scout Headquarters
Westmount	17	N. of Bow River bet. 20 & 21 Sts. N.W. to lane bet. Westmount Blvd. & Broadview Rd.	2.36	Recreation and Park.
Westmount	17	N. of Bow R. bet. 19 & 20 Sts., N.W., from Westmount Blvd. to Broadview Road.	2.8	Recreation and Park.
Westmount	17	Broadview Rd. bet. 16 & 17 Sts. N.W.	.52	Playground
Westmount	17	N. of Bow R. bet. 21 & 22 Sts. N.W., from Westmount Blvd. to Herchmer Rd.	3.46	Recreation & Rink.
Westmount	17	N. of Bow R. bet. 22 & 23 Sts. N.W. from Westmount Blvd. to Herchmer Rd.	2.67	Recreation & Park
West Calgary	18	Bet. 12 & 14 Aves. W. from lane bet. 24 & 24A St. to 25A St. S. W.,	14.25	Recreation and Park.
West Calgary	18	N. of 12 Ave. from 26th St. to approx. 33 St. S. W.,	124.15	Golf Course
Parkdale	19	Bet. 2 & 3 Aves. W. of 25th St. N. W.,	.19	Play pen
Parkdale	19	Bet. 27 & 28 Sts. N. W. from lane bet. 4 & 5 Aves. to 6 Ave. N. W.,	4.95	Recreation
West Hillhurst	20	Cor. of 1st Ave. & 23 St. N. W.,	.07	Playground
West Hillhurst	20	Cor. of 2 Ave. & 21 St. N. W.,	.62	Playground
West Hillhurst	20	23 St. N. W. bet. 5 & 6 Aves.	1.58	Playground
HounsfieId Heights	20	Bet. 13 & 14 Aves. from 15 to 15A St. N. W.,	3.0	Recreation
HounsfieId Heights	20	Cor. 8 Ave. & 17 St. N. W.,	2.67	Playground
Bowview	20	Bet. 18 & 19 St. N. W., from 6 to 8 Aves.	9.7	Recreation
Rosedale	21	11 Ave. N. W., from lane west of 7A St. to lane east of 9th St. N.W.	2.44	Recreation

Sunnyside	21	N.E. Cor. 9A St. N. W., & Sunnyside Blvd.	1.0	Playground
New Edinboro	21	S.W. cor. 5A St. & 3rd Ave. N.E.,	.55	Playground
Hillhurst	21	13th St. N.W. and lane back of Gladstone Rd.	.18	Play pen
Hillhurst	21	Bet. 10 & 12 Sts. N. W. from lane N. of 5th Ave. to approx. 8th Ave. N. W.,	29.	Riley Park Recreation & Ornamental.
Hillhurst	21	Bet. 12 & 14 Sts. N. W., from 5th Ave. to approx. lane bet. 6th and 7th Ave. N. W.	6.2	Recreation
Mountview	22	S. side 14th Ave. N. E., bet. 5th and 6th Sts.	1.1	Rink
Regal Terrace	22	Bet. 7th & 8th Aves. & 5th and 6th St. N. E.	2.2	Rink and Playground
Crescent Park	22	Bet. 2nd & 3rd Sts. N. W., from Crescent Rd. to lane, S. of 12th Ave.	12. 24	Recreation & Ornamental
Prince's Island	22	Bow River	20.	Undeveloped
Mount Pleasant	22	Bet. Centre & 1st Sts. N. E., from lane S. of 7th Ave. & N. side of 3rd Ave. N. E.,	9.48	Rotary Park, Recreation & Ornamental
Edmonton Trail	22	E. of Edm. Tr. bet. 4th Ave. N. E., & brow of hill		Recreation
Bridgeland	23	Cor. 4th Ave. & 9A St. N. E.,	.68	Plgd. & Rink
Child Ave.	23	Child Ave.	3.5	Plgd. & Rink
Old Airport	23	6th St. N. E., S. of 16 Ave.	12.9	Recreation
Renfrew	23	8th Ave. N.E. Immed. E. of Stanley Jones School Playground		Recreation
Belfast	24	9th Ave. N. E., bet. 18 & 18A Sts.	2.2	Plgd. & Rink
Tuxedo Park	27	Bet. Centre & 2nd Sts. N. E., from 29th to 30th Aves.	6.5	Recreation
Mountview	27	From Edm. Tr. to 4th St. N.E., 18th Ave. to lane bet. 16 & 17th Aves. N. E.	7.2	Recreation
Winston Heights	27	27th Ave. N. E. to lane bet. 27 & 29 Aves. 1 Acre each side of 4th St. N. E.	2.0	Recreation & Ornamental
King George	28	Bet. 9 & 10 Sts. N. W. from 21st to 23rd Ave.	3.58	Recreation
West Mt. Pleasant	28	Bet. 5 & 6 Sts. N. W., from 22nd Ave. to lane bet. 23rd and 24 Aves.	5.2	Recreation & Ornamental

North Mt. Pleasant	28	5th St. N. W., bet. 29th & 30th Aves.	1.4	Playground
Capitol Hill	29	Bet. 20 & 21st Aves. from 14th to 15th Sts. N. W.,	3.0	Recreation
Capitol Hill	29	Bet. 18th & 20th Aves. from 19th to 20th Sts. N. W.,	4.45	Recreation
North Balmoral	34	36th Ave. N. W., bet. 1st and 2nd Sts.	1.40	Plgd. & Rink
Ogden	25 CS	642' x 602', W. of 22nd St. S. E. south by 74th Ave.	8.87	Recreation
Ogden	25 CS	Bet. 23 & 24 Sts. S. E., from 72nd to 74 Aves.	3.58	Recreation
Manchester	34 CS	1A St. S. W. bet 55 & 57 Aves.	.93	Plgd. & Rinks
Millican	36 CS	Cor. 66th Ave. & 19 St. S. E.,	3.7	Plgd. & Rink.
Millican	36 CS	Bet. 62 & 64 Aves. from 18 to 18A St. S. E.,	.48	Recreation
Valleyfield	36 CS	51st Ave. S. E., bet. 22nd & 23rd Sts.	1.38	Rink.

STATEMENTS OF EXPENDITURES AND REVENUE

- 1951 -

SHAGANAPPI GOLF COURSE:

Appropriation:	14,000.00
Expenditure:	15,368.15
Revenue:	16,486.55

Maintenance:

Course:

Fairways, greens and tees	5,998.31	
Roads and paths	39.46	
Tools, equipment and repairs	1,499.53	
Starter	1,215.94	
Holidays	681.84	
Flower beds, mtce. & planting	116.40	
Gas and oils	96.79	
Hauling supplies, etc	339.33	
Electric power	233.76	
Water service mtce	584.86	
Mtce. fence	342.65	
Supplies	<u>711.02</u>	11,859.89

Club House:

Maintenance of buildings	1,584.70	
Electric Light	249.74	
Gas, heating	244.20	
Telephone	92.75	
Subscription to Golf Ass'n.	12.50	
Stationery, tickets, etc.,	224.75	
Steward	900.00	
Supplies	<u>199.62</u>	3,508.26

Total Expenditure: 15,368.15

REVENUE:

Green Fees:

649 Junior @ .35	227.15	
18,535 Senior @ .50	<u>9267.50</u>	9,494.65

Season Tickets:

19 Half Season		
(Gents)	152.00	
187 Full "	<u>2,805.00</u>	2,957.00
11 Half-season,		
(Ladies')	66.00	
123 Full "	<u>1,230.00</u>	1,296.00
2 Half-season		
(Junior)	6.00	
18 Full-season	<u>90.00</u>	96.00

Locker Rents:	146.00	13,989.65
---------------	--------	-----------

Beer Sales, 1037 Cs.	6,674.68	
Empties	414.80	
Less Cost of		
beer, 4,482.58		
License 110.00	<u>110.00</u>	2,496.90

NET REVENUE: 16,486.55

ST. GEORGE'S ISLAND ZOO:

Appropriation: 19,632.00  
Expenditure: 22,641.90

Maintenance:

Caretaker	1,283.75
Feeding & attending specimens	7,081.60
Removal of refuse	196.73
Holidays	666.24
Roads and paths	75.83
Feed, medicines & disinfectants	5,913.08
Tools and repairs	182.30
Water	522.50
Water service, mtce,	337.87
Telephone	51.00
Electric Light	488.15
Gas, heating	964.92
Supplies	190.40
Rest room, mtce.	103.95
New fence & mtce,	4,228.44
Wiring fossil houses	430.14

Credits:

Cash for Damage, 75.00	<u>                    </u>	22,641.90
------------------------	-----------------------------	-----------

STADIUM:

Appropriation: 11,700.00  
Expenditure: 9,591.06

Maintenance:

Rental Machines	160.00	
Holidays	352.15	
Mtce. of Field	2,546.76	
Mtce. Bldgs and seats	371.35	
Repairs & Equipment	290.87	
Water service mtce.	313.69	
Hauling supplies, loam, etc.,	681.36	
Track mtce.	307.99	
Mowing & watering grass areas	212.77	
Moving Bleachers	335.71	
Grass Seed	158.01	
Telephone	90.00	
Gas heating	373.28	
Electric Light	585.90	
New fence, & mtce.	2,671.60	
Stationery and supplies	292.80	
Mtce. Hurdles and goals	41.61	
Curbing	<u>1,420.48</u>	
		11,206.33

Credits:

Game permits	16.50	
Cash for electric light	953.50	
Rental, bleachers	184.93	
Mtce. track & fence	58.79	
Concession %	<u>401.55</u>	
	<u>1,615.27</u>	9,591.06

MEMATA BALL PARK:

Appropriation: 500.00  
Expenditure: 780.88

Maintenance:

Hauling	693.58	
Light	78.93	
	<u>8.37</u>	780.88

HILLHURST PARK: Appropriation: 2,000.00

TOTAL EXPENDITURES, Stadium, Ball Park, Hillhurst Park: \$ 10,371.94

MUNICIPAL SWIMMING POOL:

Appropriation: 10,000.00  
Expenditure: 10,673.53

Operating and Maintenance:

Supervision, Winston, McPherson, Richards,	1,185.52	
Maintenance Men:	2,061.63	
Cashiers	491.40	
Lifeguards	869.48	
Locker Attendants, boys 351.74 girls <u>340.65</u>	698.19	
Mtce. building and pool	617.34	
Repairs to equipment	578.88	
Electric Light and Power	253.51	
Supplies	735.87	
Swim Suits and towels	779.67	
Gas heating	1,006.26	
Water charges & mtce.	746.59	
Soaps and disinfectants, etc.,	187.02	
Stationery and tickets	203.15	
Telephone	18.61	
Boiler registration	10.00	
Holidays	209.09	
Planting	<u>21.32</u>	10,673.53

BOULEVARDS:

Appropriation: 12,000.00  
Expenditure: 9,980.81

Maintenance:

Tree removals	2,219.80	
Trees & shrubs, planting,	148.03	
Heading back & pruning	2,256.10	
Mtce. blvds.	488.87	
Renovating	876.28	
Repairs, tools & equipment	1,163.66	
Compensation	30.31	
Holidays	753.03	
Hauling	1,708.62	
Grass seed	229.16	
Supplies	277.16	
New Trailer & mtce.	299.06	
W/S Mtce.	9.55	

Less Credits:

Cash for construction: 406.71		
Compensation 72.11	<u>          </u>	\$ <u>9,980.81</u>



UNION CEMETERY:

Caretaker	1,930.61		
Pruning trees & shrubs, & removal	355.48		
Hauling	1,352.68		
Bedding and cultivating	372.45		
Grave digging, loaming and seeding	2,176.66		
W/S & sprinkler system	193.76		
Mtce. borders	518.86		
Roads and paths, mtce.	1,394.24		
Mtce. plots	9,020.98		
Sunken graves, filling in	1,625.59		
Equipment & tool repairs	934.24		
Holidays	1,905.67		
Making & placing markers	570.24		
Gas, heating	133.14		
Electric light	25.00		
Gasoline and oils	96.96		
Stationery & supplies	110.44		
Telephone	75.00		
Grading	154.28		
Lowering device & greens	<u>757.05</u>	23,703.33	
<u>Less Credits:</u>			
Disinterments, holiday and late funerals	209.00		
Foundations	541.45		
Int., Perp. Care Fund	1,868.01		
Vault	<u>16.00</u>	<u>2,634.46</u>	<u>21,072.87</u>

ROCK GARDEN (Union Cemetery)

Repairs, equipment, fence	58.07		
Cultivating	2,947.83		
Planting	71.28		
Watering	85.31		
Renovating lawns	100.06		
Holidays	239.11		
Hauling	10.52		
Mtce. roads	42.25		
Mtce. bldg.	<u>35.44</u>		<u>3,589.87</u>

BURNSLAND:

Caretaker	422.57		
Holidays	412.64		
Pruning & removal of trees, shrubs	22.05		
Flower beds, cultivating	395.12		
Grave digging	2,272.90		
Mtce. plots	6,917.93		
Water service mtce.	247.36		
Roads and paths	1,233.33		
Repairs to tools & equip.	842.23		
Hauling	911.67		
Markers	325.29		
Grass Seed	156.40		
Light and gas	35.65		
Gas and oils	6.08		
Grading and loaming	1,648.88		
Filling sunken graves	<u>1,322.30</u>	17,172.40	\$ <u>10,648.40</u>
<u>Less Credits:</u>			
Int. Perp. Care Fund	6,500.00		
Disinters	<u>24.00</u>	<u>6,524.00</u>	

QUEEN'S PARK CEMETERY:

Caretaker	2,355.52		
Hauling	2,378.64		
Flower beds and borders	757.78		
Grave digging	5,975.35		
W/S mtce.	2,732.22		
Repair sunken graves, and filling	1,274.26		
Roads and paths	517.70		
Mtce. plots	4,448.63		
Holidays	922.99		
Repairing tools & equip.	875.08		
Making & placing markers	492.51		
Mtce. fence	33.84		
Telephone	79.50		
Gasoline and oils	121.77		
Stationery	58.51		
Elec. light	28.93		
Gas heating	30.22		
Mtc. Bldg.	100.99		
Bridge construction	13.49		
Grass Seed	272.00		
Supplies	290.59		
Grading & loaming	<u>2,378.27</u>	26,638.79	
<u>Less Credits:</u>			
Int. Perp. Care Fund	3,485.00		
Charges for foundations	533.25		
Disinters & late funerals	<u>175.00</u>	<u>4,193.25</u>	\$ <u>22,445.54</u>

ST. MARY'S CEMETERY:

Caretaker	68.70		
Repair graves, etc.	278.82		
Flower beds, mtce.	68.90		
Grave digging	1,202.22		
Grading	634.24		
Loam and Seed	237.64		
W/S mtce.	47.87		
Mtce. roads and paths	141.40		
Mtce. plots	1,637.88		
Hauling	268.64		
Repairs, tools, etc	42.36		
Making and placing markers	157.94		
Grass seed	61.20		
Gas and oils	6.09		
Mtce. borders, fence	<u>292.36</u>	5,196.26	
<u>Less Credits:</u>			
Int. Perp. Care fund	910.00	<u>910.00</u>	\$ <u>4,286.26</u>

CHINESE CEMETERY:

Caretaker	39.72		
Grave digging	243.89		
Grading & loaming	44.48		
Making and placing markers	18.32		
Hauling	108.73		
Mtce. plots	626.36		
W/S Mtce.	24.10		
Mtce. roads	4.59		
Repairs, sunken graves and filling	99.56		
Grass Seed	<u>34.00</u>	1,298.75	
<u>Less Credits:</u>			
Int. Perp. Care Fund		<u>481.00</u>	\$ <u>817.75</u>

CEMETERIES: (Recap.)

Appropriation: 64,707.67  
Expenditures: 62,860.69

Expenditures:

Union	21,072.87	
Rock Garden (Union)	3,539.87	
Burnsland	10,648.40	
St. Mary's	4,286.26	
Queen's Park	22,445.54	
Chinese	<u>817.75</u>	
		<u>62,860.69</u>

NURSERIES:

Appropriation: 6,000.00  
Expenditure: 7,030.87

Operating and Maintenance:

Light, water and gas	173.76	
Cultivating	2,332.78	
Pruning	48.10	
Propagating	1,027.48	
Making flats and labels	395.86	
W/S mtce.	404.17	
Hauling	208.64	
Fertilizing	7.42	
Making hot-beds	265.49	
Planting, transplanting,	312.19	
Supplies	115.10	
Roads and paths, mtce.	29.15	
Mtce., greenhouse	210.23	
Holidays	306.82	
Stationery	4.03	
Mtce. tools & Bldgs.	1,705.06	
Trees, shrubs & seeds	<u>1,068.90</u>	9,115.23
<u>Less Credits:</u>		
Sale of plants, trees & shrubs		<u>2,084.36</u>
		<u>7,030.87</u>

AUTO MAINTENANCE:

Appropriation: 11,600.00  
Expenditures: 11,739.39

Maintenance:

Truck No. 192	140.35	
Truck No. 98	318.67	
Truck No. 169	808.45	
Truck No. 99	1,310.06	
Truck No. 91	943.63	
Truck No. 89	684.64	
Truck No. 144	837.77	
Truck No. 100	825.99	
Truck No. 130	592.00	
Truck No. 170	674.31	
Truck No. 101	1,530.76	
Truck No. 00, Garnett	440.24	
Henry	70.00	
Truck No. 113	375.08	
Overhead Loader	1,081.18	
Chauffeur License	36.00	
Sundries	<u>70.26</u>	
		<u>11,739.39</u>

MAINTENANCE OF TOOLS:

Appropriation: 8,000.00  
Expenditure: 7,322.85

Maintenance:

Gasoline and oils	315.13		
Gas heating	197.40		
Holidays	829.05		
Mtce. of buildings	264.76		
Stationery & supplies	349.94		
Hauling	42.04		
W/S mtce.	24.94		
Supervision	1,303.73		
Repair, equipment	1,761.46		
Elec. light	97.34		
New tools	<u>2,156.41</u>	7,342.20	
<u>Less Credits:</u>			
Cutting keys		<u>19.35</u>	<u>7,322.85</u>

SUNDRIES:

Appropriation: 1,250.00  
Expenditures: 1,855.00

Bleachers	176.03		
Calgary School Board	40.22		
First-aid supplies	256.12		
New trees	303.85		
Telephone, 21028	99.00		
Postages	100.43		
Subscriptions	78.00		
Stationery	70.00		
Mtce. Sup't. House	532.90		
Police Street Markings	14.15		
Mtce. grounds	636.23		
Mtce. private work	362.57		
Labor, Tech. School	1,294.13		
Interdepartmental work	<u>2,410.05</u>	6,373.68	
<u>Less Credits:</u>			
Plants for graves	280.80		
Rental bleachers	141.69		
Cash for labor, Tech.	1,433.60		
Interdepartmental work	<u>2,662.59</u>	<u>4,518.68</u>	<u>1,855.00</u>

SALARIES:

Appropriation: 22,530.80  
Expenditure: 22,132.41

Superintendent	4,680.00		
Ass't. Superintendent	3,917.33		
Accountant	2,726.34		
Clerk	1,890.10		
Stenographer-Clerk	2,238.96		
Director of Recreation	3,549.94		
Ass't. Director "	<u>3,129.84</u>		
			<u>22,132.41</u>

PLAYGROUNDS:

Appropriation: 41,953.50  
Expenditure: 38,037.06

Mtce. of grounds	1,836.68		
Repairs to equipment	2,573.31		
Playground supervisors	5,345.28		
Maintenance of Bldgs.	435.80		
Planting	31.42		
Stenographer	1,008.03		
Handicraft materials and stationery	2,925.06		
W/S mtce.	1,212.90		
Public Liability insurance	500.00		
Grass seed	442.00		
Holidays	806.90		
Mowing and watering	535.58		
Erecting & dismantling	3,133.79		
Hauling	915.69		
Grading and levelling	4,642.04		
Mtce. Mewata Rec. Hut	1,012.67		
Concerts	609.00		
New equipment	6,596.46		
Mtce. Backstops	269.04		
Supervising Rec. centre	477.00		
Tools and supplies	2,506.62		
Rental, Rec. centres	510.00		
Telephone	78.00		
Postage	8.03	38,411.35	
<u>Less Credits:</u>			
Rental, Mewata Hut	302.79		
Permits	71.50	<u>374.29</u>	<u>38,037.06</u>

RINKS:

Appropriation: 23,400.00  
Expenditure: 25,261.44

Maintenance:

Stenographer	311.60		
Holidays	639.77		
Cleaning and flooding	6,045.66		
Banking rinks	462.86		
Repairs to rink sides	536.91		
Water S. mtce.	1,083.69		
Erecting & dismantling rinks	3,178.90		
Stationery	19.33		
Supplies	1,783.17		
Postage	2.71		
Repairs to equip., tools,	3,666.76		
Hose pipe	277.18		
Flood lights, Mewata	549.06		
Flood lights	258.63		
Gas, heating	117.74		
Hauling	994.49		
Levelling & grading	4,207.68		
Water for all rinks	600.00		
Gasoline	51.30		
Supervisor, Rec. centre	474.00		
			<u>25,261.44</u>

STATIONERY:

Appropriation: 787.08  
Expenditures: 997.23

GREENHOUSE PLANTS:

Appropriation: 3,000.00  
Expenditures: 3,019.36

WATER:

Appropriation: 5,000.00  
Expenditures: 5,000.00

NEW EQUIPMENT:

Appropriation: 649.80  
Expenditures: 831.63

NEW AUTOMOBILES: (Annual payments)

ALL PARKS:

Appropriation: 80,000.00  
Expenditures: 83,421.28

Distribution:

Repair to equipment 3,836.98  
Hauling 2,815.38  
Holidays 2,327.34  
W/S mtce. 2,253.93  
Planting trees, plants 1,353.75  
Mtce. bldgs. 32.00  
New equipment 2,053.70  
Supplies 1,150.77  
Light & heating 62.54  
Grading 1,567.50  
Mtce. of grounds 1,293.44  
Compensation 697.43

Separate Expenditures:

Balmoral Circus 831.11  
Beaumont Circus 305.39  
Bowness Road Plot 61.19  
Bridge Approach (Louise) 379.10  
Bankview Plot 182.94  
Cartier Park 539.46  
Crescent Park 3,854.18  
City Hall Gardens 460.50  
Cliff Triangle 242.51  
Capitol Hill Park 430.40  
Centre Street Cut 335.52  
Coste House 192.31  
Crescent Road Plot 90.46  
Elbow Park Car Loop 131.86  
East Calgary Rotary 424.87  
Earl Grey Park 249.89  
Elbow Park Swimming  
Pool Grounds 212.90  
Elbow Drive Garden 2,857.48  
Glencoe Gardens 241.73  
Gladstone Road Plot 45.02  
Garden Crescent 260.35  
Hidden Triangle 30.11

West Mt. Pleasant Park	436.43	
Jacques Corner	2.16	
Kiwanis Park	760.17	
Millarney Park	1,234.39	
Levis Park	1,817.42	
Memorial Park	5,258.59	
Less Interest,		
Cenotaph fund <u>56.09</u>	5,202.50	
Mount Pleasant Park	2,793.19	
Memorial Drive and		
Westmount Blyd.	2,683.17	
Memorial Drive, Sunnyside	1,287.44	
Mewata Blvd. Triangle	1,347.68	
New Rosedale Park	1,425.17	
O'Brien's Corner	57.70	
Renfrew	417.44	
Rideau Plot	45.66	
Rideau Crescent	432.45	
Riley Park	8,348.01	
Riverdale Ave. Plot	126.71	
Rosevale Park	326.22	
Roxboro Park	24.00	
Sharon Ave. Plot	77.85	
South Mt. Royal Park	1,334.56	
St. George's Island Park	11,480.82	
Superior Plots	173.98	
Short Street Plot	202.10	
Scotland Street Plot	266.41	
Scarboro Plot	1,358.22	
South Calgary Park	842.00	
Tompkins Park	373.31	
Triangle Park	505.77	
Tuxedo Park	575.72	
Talon Ave. Plot	287.55	
Ward Plot	90.96	
Watson Corner Plot	73.87	
Wood, J. H., Park	1,548.99	
Winston Heights	76.35	
Prince's Island	1,186.00	
Mountview Park	1,120.56	
Sunnyside Slope	133.34	
Sundries, (Red Cross)	<u>1,095.97</u>	<u>83,421.28</u>

SUMMARY OF APPROPRIATION AND EXPENDITURES, 1951.

Salaries	22,530.80	22,132.41
St. George's Island	19,632.00	22,641.90
All Parks	80,000.00	83,421.28
Golf Course	14,000.00	15,368.15
Mewata Stadium, Hillhurst	14,200.00	10,371.94
Playgrounds	41,953.50	38,037.06
Rinks	23,400.00	25,261.44
Swimming Pool	10,000.00	10,673.53
Boulevards	12,000.00	9,980.81
Cemeteries	64,707.67	62,860.69
Nurseries	6,000.00	7,030.87
Greenhouse plants	3,000.00	3,019.36
Stationery	787.08	997.23
Tools and equipment	8,000.00	7,322.85
Auto Maintenance	11,600.00	11,739.39
Water account	5,000.00	5,000.00
Sundries	1,250.00	1,855.00
New Equipment	649.80	831.63
New Autos, annual payments	5,977.94	6,341.60
<b>TOTALS:</b>	<u>344,688.79</u>	<u>344,887.14</u>

GENERAL REVENUE STATEMENT

	<u>Estimated</u>	<u>Revenue</u>
Monuments and vault fees	550.00	514.10
Cemetery Lot Sales	3,525.00	2,781.50
Lot transfer fees	---	42.50
Pin fees	350.00	571.50
Golf	17,500.00	13,939.65
Golf Club Refreshments	---	2,496.90
Grave Digging	13,500.00	14,197.00
Pool	9,000.00	8,636.90
Percentage, gate fees	475.00	289.25
Maintenance, grave plots	3,000.00	2,929.56
Rental, Lowering Device	2,050.00	1,894.00
	<hr/>	<hr/>
	49,950.00	48,342.86
Interest of Perpetual Care of Graves Fund:		13,244.01



CREDITS TO ESTIMATES, 1951

BOULEVARDS:

Construction	441.39
Damage	<u>10.00</u>
	451.39

NURSERY:

Sale of trees & shrubs	752.35
------------------------	--------

ALL PARKS:

Rental, bleachers	24.00
Grass Seed	<u>13.50</u>
	37.50

ZOO:

Cash for damage	75.00
-----------------	-------

PLAYGROUNDS:

Rental, Rec. Hut	307.50
Permits	70.50
Damages	<u>50.00</u>
	428.00

RINGS:

Permits	3.00
---------	------

MAINTENANCE OF TOOLS:

Repair of Mowers	50.88
------------------	-------

SUNDRIES:

Plants for graves	280.80
Tech. School project	1,205.26
Cocoa-matting	97.34
Rental, bleachers	141.69
Cutting Grass	7.50
W/S Maintenance	10.56
Flvds.	<u>124.90</u>
	1,868.05

SWIMMING POOL:

Commission, A.C.T., Pay Station	5.44
------------------------------------	------

CEMETERIES:

Late funerals	264.00
Disinters	152.00
Vault fees	20.00
Hauling of loam	10.00
Tree removals	8.00
Repairs to graves	10.00
Foundations	1,060.20
Int. Perp. Care Fund:	<u>13,244.01</u>
	14,768.21

STADIUM:

Permits	22.75
Rink lease	1.00
Erection of fence	31.20
Lights	953.50
Moving of bleachers	131.23
Mtce. of Track	27.59
Concession	<u>401.55</u>
	1,568.82

TOTAL: \$ 20,008.64

-- PARKS DEPARTMENT PERSONNEL --

Superintendent - A. Munro

Ass't. Superintendent - S. E. Daines

OFFICE

Accountant & Chief Clerk - H. W. Jeffery  
General Clerk - R. Conlin  
Stenographer-Clerk - Miss R. Ekrol  
Stenographer - Miss M. Guarascio

CEMETERIES

- Queen's Park -

Caretaker - F. West  
Staff - F. Antoniuk, A. Davidenko

MEWATA STADIUM

Caretaker - J. Taylor

ST. GEORGE'S ISLAND PARK & ZOO

Curator - T. Baines  
Staff - M. Todesco,  
S. Sluth, J. Forbes, G. Christian, R. McBride

TRUCKS

S. Mudry, C. Rouleau, A. Ward, W. Clarke,  
C. Ernst

ALL PARKS

W. Nightingale, E. Goldsmith, J. Byers,  
A. Mosser, M. Nelson, G. Campbell, P. Lenihan,  
E. Laycock, P. Baska, W. Reynolds, J. Makar,  
J. Wilson

RECREATION

Director - W. Garnett  
Ass't. Director - J. R. Houghton  
Staff - J. Rowland

CEMETERIES

- Union, Burnsland, St. Mary's -

Caretaker - J. Sykes  
Staff - W. Lindsay, E. Lees, A. Cowen

MUNICIPAL GOLF COURSE

Steward - J. Ferguson, Greenskeeper - N. Little,  
Staff - E. King, J. Pringle

WATER SERVICE MTCE.

Foreman - S. Jonathan  
Staff - H. Hoines

DISTRICT FOREMEN

G. Climo, F. Haddock, D. Stark, D. Gill,  
R. Cabana

SHOPS

Foreman - O. Forster  
Ass't. Foreman - C. Henry  
Staff - R. Baxter, L. Breland,  
R. Rosby, J. Pike

SWIMMING POOL

Supervisor - D. MacPherson  
Staff - B. Richards

BOULEVARDS

Foreman - A. Ashby

NURSERY

Foreman - J. Aichison

GREENHOUSE

Foreman - H. Benstead

\*\*\*\*\*