



**ANNUAL REPORT**  
**PARKS, CEMETERIES AND PLAYGROUNDS**  
**DEPARTMENT**  
**CITY OF CALGARY**  
**1952**



CITY OF CALGARY PARKS DEPARTMENT  
ANNUAL REPORT - 1952.

CONTENTS

\*\*\*\*\*

All Parks .....	22-30 & 62
Auto Maintenance .....	58 & 59
Band Concerts .....	36
Boulevards .....	21
Cemeteries .....	20
Credits to Estimates .....	65
Financial Statements .....	52
Floral Displays .....	11
Greenhouse plants .....	4
General Revenue Statement .....	64
Memorial Park .....	25
Mewata Stadium .....	16 & 53
Municipal Swimming Pool .....	14 & 54
Municipal Golf Course .....	17 & 52
Nurseries .....	3 & 58
Park Facilities and acreages .....	45 - 51
Playgrounds .....	33, 41 & 61
Playground Facilities .....	41 & 42
Recreation Division, activities .....	33
Recommendations .....	31
Riley Park .....	2 & 27
Rinks .....	42, 43 & 60
Rock Garden .....	56
Recreation Centres .....	34 & 39
Summary of Appropriations and Expenditures .....	63
Supervised Playgrounds .....	33 & 39
Staff .....	66
St. George's Island .....	11 & 53
Zoo .....	11 & 53
Zoo Specimens .....	12

\*\*\*\*\*

CITY OF CALGARY PARKS DEPARTMENT

ANNUAL REPORT - 1952

To His Worship, Mayor D. H. Mackay,  
The Board of Commissioners,  
and Members of City Council:

Ladies and Gentlemen:

In accordance with the practice of past years of compiling a resume of the year's events in our department, I am very pleased to submit my annual report on the activities of the Parks, Cemeteries and Recreation Department of the City of Calgary.

In contrast to the adverse climatic conditions prevalent during the past two seasons, one of the finest growing seasons within memory was enjoyed by professional gardener and novice alike. Long days of sunshine and ample moisture, and an absence of disastrous hail or rain storms, resulted in an unequalled floral display in the city parks. The grass areas, shrubs, trees and perennials, many of which were damaged during the previous year's unseasonable weather, were fully recovered and made excellent growth.

With the extensive housing projects under way in this city, an ever increasing demand for floral and recreational parks is evident, and this year the department responded with a far reaching development program. A large area, approximately three hundred feet in length, along the south side of Westmount Boulevard, west of the Louise Bridge, including the dyke built by the Engineer's Department, was graded, loamed and seeded, an excellent sward of grass resulting. Later, water lines were also installed. Next spring, this area will be planted with trees, shrubs and flowers, thus eliminating an otherwise unattractive area of the city. To parallel progress in the traffic situation on the Louise Bridge, a touch of color was added with the planting of the islands at the intersection of 10th Street and Westmount Boulevard. In one of our newer districts, Hounsfeld Heights, a small triangle park was graded in readiness for spring seeding.

An important item on our long range program is the continued development of Prince's Island, with an appropriation of \$5,000.00 fully expended during this year's work. Further grading, loaming and seeding of an area of approximately five acres was accomplished, and two acres of underbrush were cleared. Also, a roadway with guard rails was constructed to the length of the developed area, to encourage the use of this restful spot as a family picnic ground.

The grounds at the Institute of Technology and Art, south of the 10th Street entrance were further ornamented, the expense being borne by the Provincial Government while maintenance was undertaken by the City of Calgary. When completed, this project will be one of Calgary's beauty spots, and a "welcome" to our tourists from the west.

St. George's Island Park was a centre of much activity during 1952. Chain-link fencing was erected, along the north bank of the island from the deer pens to the west-end gates, on top of the dyke, which will lessen considerably the danger of any portion of the fence being damaged. It also eliminates a hazard to children who might have been tempted to venture too close to the river. The dyke itself was loamed and partially seeded to grass, thus effecting a dual purpose of practicability and beauty. A small triangular area on the west end of the island, where the roads converge, was loamed and grassed, and a new roadway was constructed to eliminate the apparent danger at the right-angle intersection formerly used. Also, to the south of the north road, a footpath, re-inforced with logs, was completed. Due to the increased automobile traffic, it was felt that a means of safeguarding pedestrians was essential. Another improvement toward a more successful management of this park was the building of an incinerator on the east end of St. George's Island, this to take care of the refuse from the Zoo and park. The playfield on the east portion of the island was heavily top-dressed this fall, as was the grass area immediately surrounding the flower beds. Further, the department erected chain fence in front of the monkey house, along the front entrance, the work being done by the Zoological Society.

An improvement in the Riley park district, was the erection of chain-link fence, from the 6th Avenue entrance southward around the southeast corner of the park, a marked contrast to the old rustic fence which seemed to give the area an air of dilapidation. It is hoped to complete the fencing of this area in the not too distant future. The obvious need of dressing room, lavatory and locker facilities for the children using the pool was met this year, with the construction of the building on the south side of the pool. An added feature of this building is a central activity room, for the use of the summer playground supervisor.

The Recreation Division of this department saw important development. A large playground in the Knobb Hill district was graded and loamed in preparation for spring seeding. This was a particularly difficult area to develop because of the low lying portions, which were frequently under water. The necessity of developing a recreation area in this vicinity was obvious, as it is a closely populated and expanding district.

The Inglewood area, in East Calgary was also developed. An area at the rear of the new firehall was graded and levelled. Unfortunately, it will be necessary to abandon a portion of this playground, as we were informed by the Provincial Fire Marshall that with the proximity to the B. A. Refinery, and the resulting hazard to children at play, it would be unwise to extend the playground too far in that direction.

In compliance with an agreement between the Hillhurst Community and the City of Calgary, Hillhurst Park was completely loamed and seeded. Chain-link fence was erected along 5th Avenue and up 14th Street Northwest. It is hoped that the northern portion will be completed this coming year, as many requests have been received from the residents for this to be done.

We are very appreciative of the work accomplished by the Kiwanians of this city during 1952. A children's wading pool was constructed on the north hill on the Mountview playground area, with splendid results. The department prepared the area, doing the excavating and supplying the gravel for the project. An appropriation was made for the development of the eastern portion of South Calgary Park, and work was started. However, these plans were tabled, as the South Calgary Kinsmen's Club approached the department with a view to constructing a swimming pool on the South East portion of the park. This curtailed further development until such time as the pool is completed. The Kiwanis Club also built an excellent wading pool in the Northwest corner of the park, the department putting in the sewer and necessary excavations and supplying the gravel. The children and adults of this area owe a great deal to this progressive organization, as indeed do we all. To the Kiwanians and Kinsmen we extend our hearty thanks, and may their members meet with every good fortune during the coming year.

Various improvements in other parts of the system are also worthy of mention. A new clubhouse was erected in Rotary Park by the Tennis Club, the department installing sanitary facilities. This will no doubt promote an interest in tennis and bring both patron and spectator to enjoy the beauty of our Rotary Park. Also, at our 25A Street West park, a baseball diamond was measured out and graded, in preparation for later loaming and seeding. A football field and baseball diamond will be available this coming season at Bowview playground. A splendid play area for the smaller children was provided in the grading and preparation of a playground in the West Hillhurst area. With the requirements of small children in mind, the department also graded and prepared a small park at 15th Avenue and 4th Street Northeast. This year our Mission playground was brought up to standard with the erection of a complete chain-link fence, thus lessening the danger to small children from passing traffic. As a further experiment in the Mission project, we dyked the banks and lowered the surface of the play area. This was deemed necessary here, to prevent the melting ice from running on to neighboring properties. Another small playground was graded at 17A Street and 21 Avenue Southwest.

During the first full year that the department has operated the greenhouses, a very successful season was realized, as better plants in larger quantities were available for distribution to the various parks. The foremen throughout the system were more than satisfied with the results. Of importance too, was the installation of the new boiler for the heating system at the greenhouse. The former boiler had been condemned by the Provincial Inspector, and could no longer accommodate the requirements of this department. The new boiler is a much larger unit, and should meet the requirements of an expanding parks system, in years to come. From the standpoint of safety, the new potting shed will be doubly appreciated by the men, as the lighting is excellent and it affords much more comfortable working conditions for the staff. Also, it is easily accessible from both greenhouses.

The old potting shed, a room adjoining the residence of the Parks Superintendent, at 2502 - 2nd Street Southeast, was renovated completely and converted into a bedroom. The small four-room bungalow, the property of the City Parks Department, is greatly improved by this addition, and far more convenient as regards accommodation.

Calgary's Mewata Stadium saw increased activity during the past season. The Stampeders Football club erected additional bleachers on the east side of the stadium, at an expense in the neighborhood of \$20,000.00. With the increasing demand for seating accommodation in mind, bleachers will be built next season on the north and south sides. The new fence at the north end of Mewata Stadium also adds to the general appearance of the park. At the beginning of the season, the Stampeders Football Club entered into a new agreement with the City of Calgary, for an 8-year period. Under the new agreement, the Parks Department waives the gate percentage of 12 $\frac{1}{2}$ %, in return for a yearly payment of \$5,000.00 to the department, this sum to cover part of the cost of maintenance.

In July of last year, the convention of the Canadian Federation of Mayors and Municipalities was held in Calgary, and this department was called upon to supply a great variety of flowers and to decorate the various convention halls and luncheon tables during the stay of the members. Also, an organized tour of the City and its park system was planned, and greatly enjoyed by the visiting representatives.

The Parks Department has now a complete list of all department property, park land, which has been set aside or donated since our department was formed in 1907. The total acreage, including both parks and playgrounds, is 834.18 acres. This figure does not include the cemeteries, golf course, or land set aside for a new golf course on the North Hill.

#### NURSERY AND GREENHOUSE:

The year 1952 may well be considered a banner year for this branch of the department, as a very extensive planting program was carried out. Since the operation of the greenhouses by our own men, both quality and quantity of plants available are ensured. The success of the venture was more than proven by the floral displays, which of course result from an adequate supply of plants at their various seasons. Outstanding improvements in the nursery, were the installation of a new boiler and improved heating system, a new sprinkling system in the north end of the nursery, and renovations of the old system to give the whole increased pressure. Also, a new tractor was purchased for the nursery.

We are finding it increasingly necessary to purchase large orders of trees and shrubs, at quite an expense to the city, from outside nurseries because of our very limited space. The demand from our tree-planting program, cannot be met by our own nurseries with the meagre acreage of our present location. It is hoped that at some future date all trees, shrubs and plants required by the department can be supplied by our own nurseries. However, in order to accomplish this, the present nursery would need to be extended by a number of acres.

Our nursery stock was augmented considerably during the past season, with shipments of various plants and trees ordered during the first part of the season. 800 birch were received from Lacombe Nurseries, 350 Elm and 200 Ash from the Prairie Nurseries in Saskatchewan. Also, nine new varieties of Philadelphus have been grown from seeds received from the Royal Botanical Gardens, Edinburgh. These plants have made splendid progress and will be very useful in next season's planting program. The stock of perennials is gradually being replenished, with 4,200 various perennials on hand in readiness for 1953.

During the past season the following were provided to the numerous parks, cemeteries and boulevards:

738 Birch,	220 Elm,	100 Ash,
80 Spruce,	216 Cornus Baileyi,	116 Lonicera Tartarica,
109 Syringa Villosa,	26 Caragana,	35 Prunus Tomentosa,
31 Spiraea's,	30 Prunus Padus,	86 N.W. Poplar,
450 Mixed trees and shrubs, and 3,385 perennials, bringing the final total to 2,218 trees and shrubs, and 3,385 perennials.		

Following is a report from our Nursery foreman.

Perennials grown from seed:

<u>Species</u>	<u>Variety</u>	<u>Number planted.</u>
Doronicum	Caucasicum	7
Echinops	Ritro	6
Euphorbia	Variegata	63
Erigeron	Hybrids Grandiflora	126
Gypsophila	Paniculata	126
Helenium	Autumnale Nanum Praecox	35
Heuchera	Sanguinea Hybrids	120
Hesperis	Matronalis Purple	250
Hesperis	Matronalis White	190
Incarvillea	Delawayii	126
Inula	Golden Beauty	60
Lupinus	Polyphyllus Russelli	63
Lychnis	Haageana Atrosanguinea	63
Lythrum	Atropopureum	250
Monarda	Hybrida	105
Oenothera	Macrocarpa	30
Papavor	Oriental, dark red	126
Papavor	Flanders Field	63
Papavor	Iceland, the Empress	190
Primula	Polyanthus	35
Papavor	Oriental, Flesh Color	126
Platycodon	Grandiflora, Blue	100
Physostegia	Virginica	126
Rudbeckia	Purpurea	60
Sweet William	Double	126
Sidalcea	Rosy Gem	126
Scabiosa	Caucasica, New Hybrids	7
Thalictrum	Aquiligifolium	5
Thalictrum	Depterocarpum	63
Tritoma	Early Flowering	30
Veronica	Spicata	126
Hollyhock	Chaters, Double Mixed	12
Yucca	Montana	34
Pentstemon		26
Mimulus	Cardinalis	63
Achillea	Filipendula	126
Achillea	Millefolium Kelwayi	126
Aquilegea	Alpina	250
Aquilegea	Crimson Star	15
Aquilegea	Long Spurred Scott's Elliott	126
Aquilegea	Rose Queen	190
Aquilegea	Long Spurred, W.H.P. Select Hybrids	190
Aquilegea	Clematiflora	50

Briza	Gracilis	126
Campanula	Calycanthema Rose	10
Campanula	Calycanthema, Mixed	25
Campanula	Persicifolia Alba	28
Campanula	Persicifolia Feltham Beauty	120
Candytuft	Sempervirens	126
Candytuft	Gibraltarica Lilac	126
Centaurea	Montana	63
Centaurea	Dealbata	126
Cheiranthus	Allionii	250
Chelone	Barbata Hybrida Mixed	63
Chelone	Barbata Red	126
Chrysanthemum	Marconi White	126
Chrysanthemum	Korean Hybrids	126
"	Alaska Leucanthemum	126
Delphinium	Belladonna Clivedon Beauty	126
"	Black Knight Series	150
"	Pacific Giants, Summer skies	126
"	Round table series	158
"	King Arthur Series	126
"	Blue Bird Series	5
"	Galahad Series	126
"	Guinevere Series	25
Dianthus	Sweet Wivelsfield	126
Dianthus	Alwodi Alpinus	126
Digitalis	The Shirley	63

Perennial Plants Supplied to the Nursery, 1952:

Achillea	Filipendula	63
Achillea	Millefolium Kelwayi	63
Campanula	Mixed	25
Campanula	Persicifolia Feltham Beauty	28
Centaurea	Montana	63
Centaurea	Dealbata	63
Chelone	Barbata Hybrida Mixed	63
Chrysanthemum	Marconi White	126
Delphinium	Belladonna Clivedon Beauty	75
"	Black Knight Series	25
"	Round Table Series	100
"	Pacific Giants, Summer skies	63
"	King Arthur Series	63
"	Guinevere Series	25
Dianthus	Sweet Wivelsfield	63
Dianthus	Alwoodi Alpinus	126
Gypsophila	Paniculata	126
Incarvillea	Delawayii	63
Lychinus	Haageana Atrosanguinea	63
Monarda	Hybrids	42
Papavor	Oriental, dark red	63
Papavor	Oriental, Flesh color	63
Sidalcea	Rosy Gem	126
Veronica	Specata	126

Perennials Supplied to the Rockery:

Hesperis	Matronalis purple	250
Hesperis	Matronalis white	190

Annuals Supplied to the Electric Light Department:

224 Larkspur	32 Petunias	320 Snapdragons
32 Marigolds	64 Salpiglossis	96 Carnations
256 Stocks	192 Asters	448 Phlox
64 Verbena	96 Alyssum, white	96 Lobelia
128 Tagetes	100 Geraniums (pots)	128 Marigolds, African

Sub-Station #8:

192 Snapdragons	64 Lobelia	64 Phlox
128 Asters	192 Stocks	64 Calendula
192 Verbena Pixie	128 Verbena Blue	64 Marigold African
96 Petunias	192 Marigold French	64 Larkspur

Sub-Station #6:

64 Verbena Dwarf	192 Snapdragons	192 Verbena Defiance
64 Alyssum	64 Pansies	64 Marigold African
256 Lobelia	128 Marigold French	256 Stocks
128 Asters	64 Calendula	55 Pots Salvia
64 Larkspur		

Civic Garage:

64 Larkspur	64 Verbena Blue	256 Snapdragons
32 Calendula	64 Stocks	128 Verbena
96 Viscaria Blue	64 Asters	96 Viscaria Pink
64 Scabiosa	64 Nicotiana	

Sub-Station No. 1: Three window boxes filled.

Annuals Supplied to Waterworks Department: (Glenmore Dam)

54 Red Geraniums, pots	256 Snaps	128 Verbena
30 White "	128 Viscaria	384 Snaps
200 Dahlias	384 Stocks	128 Larkspur
576 Nemesia	128 Scabiosa	128 Marigold, Butterball
192 Snaps	96 Marigold, Spry	192 Stocks
128 Alyssum		

Annuals Supplied to Exhibition Grounds and Residence:

128 Alyssum	128 Lobelia	128 Marigold
64 Petunias	320 Dimorphothea	26 Geraniums, pots
192 Snaps, Rosamond	30 Petunias, pots	192 Snaps, Startler
384 Asters	Six window boxes were also supplied with plants.	

Plants Supplied to Memorial Park, 1952:

576 Snapdragons,	768 Alyssum, violet	256 Verbena, Pixie
orange	704 Alyssum, white	64 Petunia, white
640 " Eldorado,	256 Alyssum	6 Petunia, pots
640 " Rosamond,	256 Alyssum, violet	256 Zinnias, cupid
128 " Purple King	2 Dracenas, pots	640 Zinnia, Persian carpet
192 " White	832 Schizanthus	384 Stocks, mixed
512 " Orange	512 Salpiglossis	512 Viscaria, blue
448 " Startler	640 Lobelia, Crystal	512 " rose
320 Nemesia, orange	384 " Mrs.Clibram	640 Asters, Princess
256 " Fire King	768 " Trailing	512 Asters, Crego
128 Matricaria,	320 Marigold, cupid	512 Pyrethrum
Snowball	306 Dahlias, pots	840 Pots Geraniums
2,944 Assorted Annuals		

Plants Supplied to Elbow Drive Gardens:

960 Petunias, Giants	320 Lobelia, Blue,	365 Salvia, pots
256 Petunias, White		

Tompkins Park:

1,664 Snaps, Mixed	128 Petunias, Dwarf Giants of Calif.
	357 Petunias, Pots.



Plants supplied to Municipal Swimming Pool:

128 Marigolds, Spry, 92 Geraniums. 4 Boston ferns,  
Two Window boxes.

St. George's Island Park:

448 Snapdragons, purple		64 Petunias, Blue
448 " orange		200 Petunias, Pots
128 Matricaria		640 Stocks, Mixed
128 Marigold, Sunkist		256 Alyssum, white
704 Schizanthus		192 Nemesia
320 Asters, red		128 Nicotiana
576 Asters, white		128 Larkspur
320 Asters, blue		7,936 Annuals, assorted
128 Stocks, yellow		200 Cannas, Pots
128 Stocks, shell pink		62 Geraniums, Pots,
256 Stocks, lavender		120 Salvia, Pots,
320 Stocks, Rose	7 Boston ferns,	8 Window boxes

City Hall Gardens:

320 Pansies, Blue	192 Lobelia	320 Alyssum
64 Pansies, Yellow	320 Lobelia	320 Stocks
260 Geraniums, Hendrick,		80 Seloroy
366 Geraniums, Radio Red,		6 Dracenas

Cemetery Borders:

192 Alyssum	64 Lobelia	128 Petunias, Giant
128 Snaps, Eldorado	32 Salpiglossis	32 Scabious
64 Pansies, Yellow	160 Snaps, Orange	32 Stocks
128 Viscaria, Blue	224 Snaps, Yellow	384 Asters
320 Carnations	128 Dianthus	128 Viscaria
65 Geraniums, pots	100 Cannas, pots	6,400 Annuals, assorted

Glencoe Gardens:

128 Ageratum, pink		128 Viscaria, Blue
--------------------	--	--------------------

Garden Crescent:

192 Pansies	192 Stocks	640 Assorted Annuals
-------------	------------	----------------------

Elbow Park Borders:

128 Viscaria Blue	128 Viscaria	1,280 Assorted Annuals
-------------------	--------------	------------------------

Cliff Park:

640 Zinnias	192 Viscaria, Blue	192 Viscaria, rose
320 Pansies, Mixed		1,408 Stocks, Deep rose

Mountview Park:

192 Nemesia, Orange	256 Viscaria Blue	448 Stocks, Yellow
256 Nemesia, Red	256 Viscaria, Rose	512 Stocks, Lavender
128 Ageratum, Blue	576 Marigold, Cupid	192 Stocks, Dark Blue
192 Ageratum, Pink	512 Snaps, Startler	192 Stocks, Shell Pink
768 Verbena	640 Snaps, Delight	100 Geraniums, pots

Short Street Plot:

768 Assorted Annuals,	576 Dianthus	256 Portulaca
		128 Dimorphothecca

Recreation Hut, Mewata:

128 Snaps	64 Alyssum	30 Stocks
	6 Geraniums, pots	



Riley Park:

800 Salpiglossis	192 Zinnias	1,024 Stocks, pink
320 Nemesia,	960 Stocks, white	1,024 Snaps, Mixed
1,664 Verbena	576 Zinnias	1,024 Snaps, Pink
96 Marigold, Fr.,	832 Asters, mixed	1,024 Snaps, yellow
256 Alyssum, white	320 Nicotiana	192 Viscaria, blue
192 Petunias	384 Calendulas	128 Marigold
128 Phlox	1,600 Assorted Annuals	225 Dahlias, pots
116 Geraniums, pots		

Louise Bridge:

448 Schizanthus	256 Petunias, blue,	256 Petunias, Giant
192 Snaps	192 Lobelia	77 Dahlias, pots

Coste House:

88 Salvia, pots	90 Geraniums, pots,	128 Marigold, Spry
-----------------	---------------------	--------------------

Scarboro Triangle:

160 Snaps, orange	128 Snaps, Gorgeous	64 Snaps, pink
128 Marigold, Butterball		

Superior Plots:

256 Stocks	128 Alyssum, purple	64 Lobelia, blue
------------	---------------------	------------------

Killarney Library:

288 Snaps, purple	128 Alyssum purple	128 Tagetes
256 Snaps, Fair Lady		100 Salvia, pots

Winston Park:

256 Snaps, pink	320 Asters	256 Snaps, Firedragon
-----------------	------------	-----------------------

Kiwanis Park:

320 Snaps	64 Dimorphotheca	128 Verbena
64 Phlox	128 Ageratum	128 Alyssum
64 Viscaria	128 Stocks	128 Nemesia
64 Marigold	320 Asters	64 Petunias
64 Tagetes		

Rotary Park:

512 Snaps, pink	320 Asters, scarlet	320 Marigold, African
192 Marigold, Butterball	Asters, mauve, 512	512 Snaps, yellow

Crescent Park:

576 Schizanthus	448 Asters	1,792 Stocks
192 Tagetes	384 Pentstemons	384 Snaps
320 Viscaria, Red		

Crescent Triangle:

128 Petunias, Giant	128 Stocks, pink	128 Stocks, Lavender
128 Viscaria, pink	128 Stocks, blue	64 Viscaris, blue

West Mount Pleasant Park:

320 Asters, rose	128 Marigold, Spry	320 Larkspur, Lavender
320 Asters, white	64 Marigold, Butterball	110 Dahlias, pots
	512 Marigold, Harmony	

Balmoral Circus:

512 Snaps, Fair Lady	576 Asters, shell pink	768 Stocks, Lavender
512 Snaps, R. Rose	384 Asters, blue	768 Stocks, yellow
512 Snaps, Rosella	480 Asters, red	160 Marigold, Cupid
512 " Malmaison	512 Asters, white	384 Ageratum, Blue
512 " White	288 Geraniums	

10th Street Northwest:

256 Stocks, Blue	256 Stocks, Rose,	128 Verbena, Pixie
320 Asters,	320 Larkspur	448 Carnations
256 Ageratum, Pink	128 Marigold, Butterball	512 Snaps, Pink
256 Snaps, Royal Rose	64 Viscaria, Blue	512 Snaps, Flame
128 Nemesis, Orange	320 Asters, Blue	224 Nemesis, Red
192 Verbena, Defiance	64 Lobelia,	320 Petunias, White
320 Viscaria, Red	256 Verbena, Blue	704 Dianthus
320 Verbena, Dwarf	384 Scabiosa	192 Stocks, Red
512 Dimorphotheca	192 Asters, White	1,152 Asters
256 Snaps, Dazzler	192 Stocks, Lavender	128 Larkspur, Rose
256 Stocks, Pink	64 Larkspur, white	224 Nemesis, Suttoni
320 Nicotiana	64 Marigold	96 Tagetes
166 Dahlias, pots	128 Lobelia, white	253 Geraniums, pots
50 Salvia, pots	100 Saleroy, pots	384 Dimorphotheca
384 Verbena, Spitfire		

Golf Course:

64 Alyssum	128 Tagetes	64 Aster, Scarlet
64 Stocks, Lavender	64 Aster, Lt. Blue	64 Stocks, Yellow
64 Marigold, Sunkist	256 Snaps, Startler	64 Marigold, Double orange
128 Pansies	64 Marigold Butterball	128 Petunias
64 Lobelia, Blue	50 Geraniums	

Queen's Park Cemetery:

256 Alyssum, white	128 Alyssum, Violet	20 Saleroy, pots
172 Dahlias, pots	50 Geraniums, pots	160 Salvia, pots
60 Double Petunias,	320 Pansies, Mixed	24 Phlox
64 Pansies, white	30 Geraniums, pots	64 Pansies, Blue
8 Double Petunias	64 Alyssum	64 Snaps
64 Petunias.		

Union Cemetery:

240 Snaps	60 Nemesis	60 Petunias
72 Stocks	324 Pansies	30 Double Petunias, pots
240 Lobelia	78 Geraniums, pots	312 Alyssum

Burnsland Cemetery:

300 Lobelia	300 Snaps	24 Petunias
120 Stocks	144 Pansies	120 Nemesis
216 Alyssum, white	120 Double Petunias	24 Alyssum, purple
117 Geraniums, pots	18 Asters	12 Phlox
448 Asters, Scarlet	192 Stocks, white	256 Marigold, Spry
128 Nemesis, orange	384 Petunias, Blue	128 Nemesis, Fire King
128 Stocks, Yellow	512 Nicotiana	128 Asters, Blue
256 Marigold, B.ball,	128 Snaps, Cerise	320 Larkspur, mixed
64 Lobelia	256 Larkspur, Lilac	256 Snaps, Dazzler
128 Larkspur, Pink	256 Asters, Lt.Blue	53 Geraniums, pots

St. Mary's Cemetery:

256 Nemesis	64 Calendula	192 Snaps
64 Phlox	128 Viscaria	128 Petunias
192 Asters	128 Snaps	128 Verbena
128 Viscaria	128 Stocks,	1,024 Assorted Annuals

GREENHOUSE STOCK, DECEMBER 31, 1952:

5,000 Geraniums, 2 $\frac{1}{2}$ "	400 Seleroides, 2 $\frac{1}{2}$ "
180 Dracena, 2 $\frac{1}{2}$ "	63 Fuchsias, Arborescens, 3"
75 Vinca, 2 $\frac{1}{2}$ "	12 Stock plants, Marguerite Daisies,
30 Vinca, 5"	300 Phlox, propogated from cuttings.

FLORAL DISPLAYS:

During the past season our floral parks reached a high standard, the best displays being at the Reader Rock Gardens, Balmoral Circus, Riley Park, Memorial Park, St. George's Island, the New Mountview Park and at 10th Street Northwest. A direct contrast to the freak weather conditions of the two previous seasons, the long days of glorious sunshine together with adequate moisture during our growing season resulted in heart-warming results, as any lover of flowers will recall. The number of visitors to the Reader Rock Garden was doubled over that of the previous year, and many remarked on the display of Cana lilies, Moccasin plant, and the rare collection of Alpines.

Maintenance of the Reader Rock Garden is at times very difficult, because of the terrain and the variety of plants, but the workmen employed here are keenly interested in their work and enjoy the surroundings, the results of their effort.

During the summer months approximately 1,750 Alpine plants and 75 potted Canas were planted in the rockery, and in the early part of the season it was necessary to reseed 1,250 sq. ft. of lawn owing to the prevalence of snow-mould. Insects were troublesome during this past season, making it necessary to spray the plants regularly.

ST. GEORGE'S ISLAND PARK AND ZOO:

Although the attendance at St. George's Island Park was affected by the incidence of polio, a year of increased activity was evident. The appearance of the whole park has been improved. Shrubs were planted adjacent to the animal pens, and the area in front of the Primate House was graded, loamed and seeded. A few birch trees were also planted in this area, of which several will require replacement. The chain link fence along the dyke that was washed away by floods was replaced and the entire west-end entrance to the park was changed, in an effort to ensure safety. Several large old trees which were in varying stages of decay were removed this year.

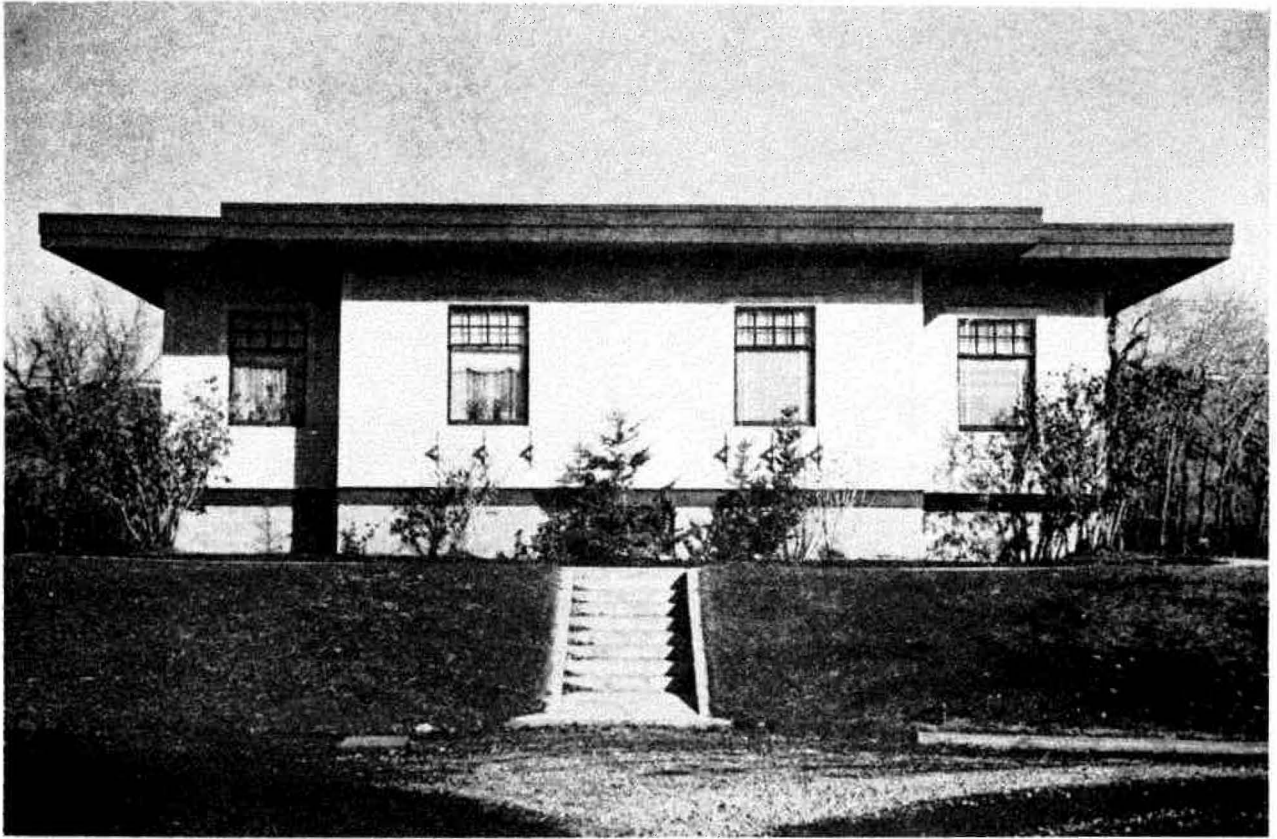
In his year-end report, Mr. T. Baines, Curator, gives a comprehensive review of the work completed during the past year at the Zoo. The following is an excerpt from the report:

"Another very successful year can be recorded. The main buildings constructed by the Zoological Society were: Completion of a ninety foot Lion house, which building is now fully occupied and appears to function well; a new cabin for antelope; a new porch and entrance to #2 Fossil House, and a new roof laid on #1 Fossil House. Other construction work includes considerable amounts of fencing, hauling of hundreds of yards of fill, which was spread in the Elk and Deer paddocks; the west end waterfowl enclosure was fenced with new steel pipe and chain-link fencing; the old leopard pen was remodeled for temporary use as an eagle pen, and also all replicas in the Dinosaur Park were painted and wherever required, repaired."

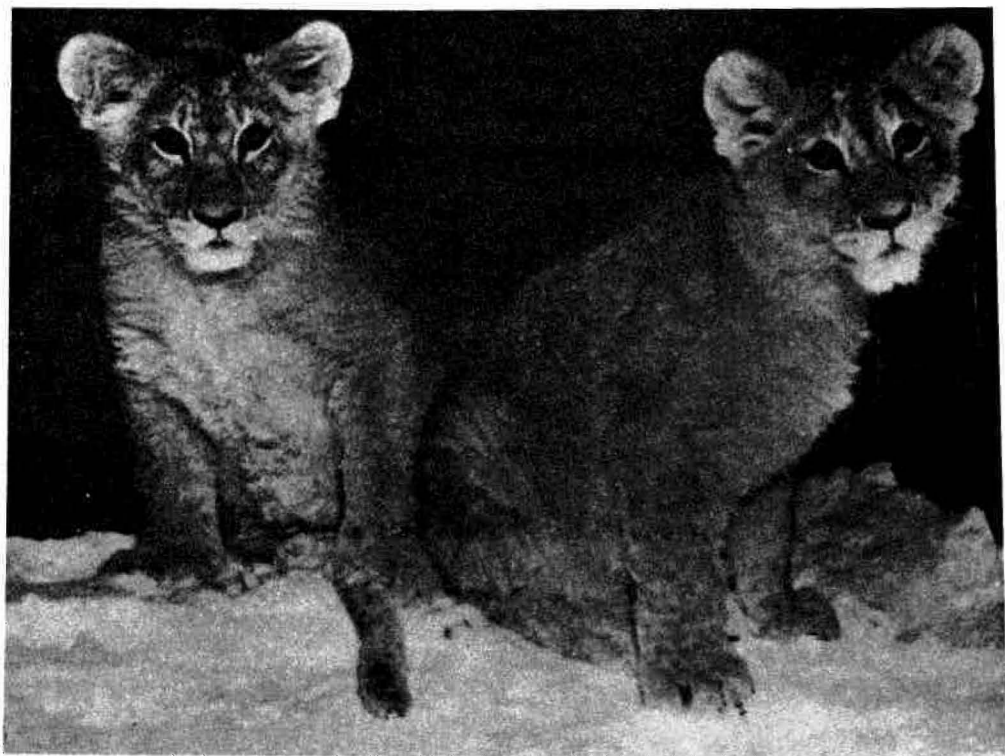
"While few new specimens were added, these were such as to improve very much the collection, Also, our natural increase was the best ever experienced. Among the more important specimens added were:

Lion-tailed monkey	Axis Deer
Ocelot	Whistling Swan
Gray Fox	Sun Bears

These were a donation by Local 37 of the Civic Employees Federation and were purchased in Seattle."



CURATOR'S HOUSE



LION CUBS

The following is an inventory of Zoo specimens, as at December 31st, 1952:

1 Lion-tailed monkey	5 Northern Bobcat
2 Chimpanzees	2 Californian Bobcat
1 Drill	3 Fisher
3 Guinea Baboon	2 Marten
1 Hamadryas Baboon	5 Fitch
2 Anubis Baboon	2 Skunk
1 Diana Monkey	2 Badger
1 De Brazza Monkey	2 Gennet
1 Spider Monkey	4 Cacomistles
2 Pigtailed Monkey	5 Coati Mundi
2 Sapajou Monkey	2 Raccoon - grey
1 Ringtailed Monkey	1 Raccoon - black
1 Java Monkey	2 Raccoon - albino
4 Rhesus Monkey	4 Kinkajou
4 Green Monkey	1 Armidillo
2 Vervet Monkey	4 Grey Squirrel
1 Chacma Baboon	2 Red Fox Squirrels
7 Asiatic White Wapiti	2 Prairie Dogs
2 Black Tailed Deer	1 White Nosed Fox Squirrel
1 Canadian Moose	2 Red Pine Squirrel
2 Canadian Elk	3 Black Squirrel
4 Mule Deer	4 Patagonian Cavy
3 Virginia Deer	2 Porcupine (American)
1 Pronghorn Antelope	10 Beaver
3 Spotted Fallow Deer	1 Coypu
3 Brown Fallow Deer	1 Muskrat
4 Mouflon	3 Mountain Marmots
2 Axis Deer	2 Woodchucks
6 Audad	4 Hamsters
3 Tahr	2 White Rabbit
6 Sika Deer	2 Piebald Rat
3 Black Fallow Deer	2 Rabbit
2 White Fallow Deer	6 Guinea Pigs
3 Peccary	4 White Mice
2 European Wild Boar	1 Hodgsons Porcupine
2 Polar Bear	2 Wallaroo
3 Grizzly Bear	1 Opossum
1 Black Bear	1 Red and Blue Macaw
1 Black Bear, Brown Phase	1 Large Sulphur Crested Cockatoo
2 African Lion	2 Military Macaw
2 Leopard	1 Yellow Naped Parrot
3 Puma	1 Double Yellow Head Parrot
4 Wolves	10 Yellow Budgerigar
2 Coyotes	2 Green Budgerigar
2 Gray Fox	20 Blue Budgerigar
4 Arctic Fox	2 White Pelican
3 Blue Fox	2 Double Crested Cormorant
2 Red Fox	3 Emu
2 Red Fox (silver phase)	2 Two-toed Sloth
2 Red Fox (Cross Phase)	2 California Sea Lions
2 Red Fox (platinum phase)	8 Great Horned Owl
2 Wolverine	1 Barn Owl
2 Sun Bears	3 Arctic Owl
1 Ocelot	4 Pine Siskens
2 Mink	4 Song Sparrows
4 White Crowned Sparrows	4 Dragon Pigeon
4 White Crested Sparrows	4 Tumbler Pigeon
1 Lincoln Sparrow	4 Roller Pigeon
1 Fox Sparrow	4 Parlor Tumbler Pigeon
2 Juncos	4 Muffed Tumbler Pigeon
22 Canaries	4 European White Pigeon
1 Evening Grosbeak	4 Owl Pigeon
1 Pine Grosbeak	1 Bald Eagle
2 American Goldfinch	5 Golden Eagle

1 Goldfinch, canary hybrid	1 Rough Legged Hawk
1 Chipping Sparrow	4 Swainson Hawk
1 Robbin	1 Sparrow Hawk
3 Goldfinch, American	1 Cooper Hawk
3 Whistling Swans	2 Red Tail Hawk
2 Sevastapool Geese	1 Prairie Falcon
3 Black Swan	1 Turkey Buzzard
12 Mute Swans	1 Black Vulture
12 Blue Geese	4 Short Eared Owls
12 Canadian Geese	2 Long Eared Owls
8 Blue Geese	4 Egyptian Geese
2 Snow Geese	5 African Geese
1 Ross Goose	4 White Muscovy Ducks
5 White Fronted Geese	2 Colored Muscovy Ducks
7 Grey Lag Geese	10 Grey Rouen Ducks
14 Blue Peafowl	2 White Rouen Ducks
1 White Peafowl	4 Wood-Ducks
1 Black Shouldered Peafowl	8 Mallard Ducks
2 Pearl Guinea Fowl	6 Pintail Ducks
4 White Guinea Fowl	4 Gaduall Ducks
10 Chukar Partridge	2 Green-winged Teal Ducks
6 Chinese Ringneck Pheasant	2 Blue-winged Teal Ducks
12 Mongolian Pheasant	1 African-X Canada Goose
3 Formosan Pheasant	2 Blue-X Canada Geese
4 Melanistic Pheasant	2 Cayuga Ducks
5 Golden Pheasant	2 Widgeon
9 Lady Amherst Pheasant	1 Sandhill Crane
6 Reeve Pheasant	6 White Chinese Geese
4 Swinhoe Pheasant	1 Egret
4 Silver Crested Kaleege	1 Small Blue Heron
6 Blue Manchurian Pheasant	2 Mandarin Ducks
3 Old English Black Necked Pheasant	4 California Gulls
3 Elliott Pheasant	4 Ring-billed Gulls
1 North American Wild Turkey	1 Glaucous-winged Gull
1 Mourning Dove	2 European Starlings
10 Ring Dove	3 American Crow
2 Turtle Doves	4 American Magpie
3 White Doves	10 Bronze Crackle
4 Magpie Pigeon	2 Red Polls
4 Fantail Pigeon	4 Nunn Pigeon
4 Archangel Pigeon	4 Satinette Pigeon
4 Suabian Pigeon	4 Swallow Pigeon
4 Modena Pigeon	4 Homer Pigeon

#### LIFE SIZED DINOSAUR MODELS IN ST. GEORGE'S ISLAND PARK:

With regard to the construction of these models, it cannot be over-emphasized that with the exception of colour, which is largely a matter of conjecture, all details are absolutely accurate, and are based on the findings of world-famous paleontologists.

After the bones are excavated, classified and placed in position, a scale model is constructed, and this model is usually 12" to 20" long. When a suitable location is decided upon, pegs are placed in the ground, where feet, head, tail, etc., will appear. Concrete foundations for feet are next constructed and iron reinforcing rods are sunk in these, such rods protruding above the ground. Other rods are attached to them and fabricated to approximate shape of the specimen. Next metal lath is attached to these rods to give more definite shape and substance to model. Cement and concrete are then placed both in and outside of the frame, until model gradually assumes the correct outline. Following this, head, tail, toes, etc., are added and finally muscles and outer covering are plastered on, and paint applied. As mentioned above, colour is a matter of doubt, but it is assumed to be either bright camouflage, e.g. the giraffe, or a dull unobtrusive colour, e.g. the elephant.

Credit for these models is due to many people, but no few notes on this unique exhibit would be complete without mention of:



The late Dr. O. H. Patrick, for fourteen years president of the Calgary Zoological Society, and originator of the entire scheme; Dr. C. M. Stenberg, National Museum, Ottawa, one of the world's outstanding paleontologists; Dr. Barnum Brown, of the American Museum of Natural Science, New York; Dr. L. S. Russell, Curator, Toronto Museum; Dr. W. E. Swinton, British Museum; Mr. Charles Gilmore, of the Museum of Natural History, Washington, D. C.; Mr. Charles Biel, Banff, Alberta; and Mr. John Kanerva, of Calgary, who was responsible for the construction of the life-sized models.

MUNICIPAL SWIMMING POOL:

The Swimming Pool was opened for its 12th consecutive season on May 24th, after the usual preparations for opening day. However, the season was indeed a short one, as the pool was obliged to close its doors to the public on August 1st, as a preventative measure against the outbreak of poliomyelitis.

During this short season the weather was most inconsistent, for almost every weekend it was cool and rainy. The vagaries of the weather continued, as soon after the pool was closed, perfect "swimming" weather arrived, lasting almost to the end of September! All attendance records would indeed have been broken had not the City health authorities requested the closing of the pool.

Before the next swimming season arrives, it is the intention of the department to have the stucco of the building repaired, and the whole of the exterior repainted. I would again stress the need for an experienced pool operator, and experienced staff, as in the past season, we were again obliged to staff the pool with young inexperienced personnel, which is definitely most unsatisfactory.

STATISTICS:

Turnstile reading	37,218
Girls' Town Club, free	<u>266</u>
TOTAL attendance:	37,484

REVENUE:

Swim Tickets:

10,668 @ .10¢	\$ 1,066.80
10,681 @ .15¢	1,602.15
13,033 @ .25	3,258.25

Punch Tickets:

492 @ 1.00	492.00
------------	--------

Spectators:

2,344 @ .05¢	117.20
--------------	--------

Towels:

1,849 @ .10¢	184.90
--------------	--------

Swim Suits:

1,014 @ .15¢	152.10
1,054 @ .25¢	263.50

Swim Meet:

9.85
------

TOTAL REVENUE:	<u>7,146.75</u>
----------------	-----------------

APPROPRIATION: \$ 12,000.00

EXPENDITURE: \$ 9,807.53

OPERATIONAL LOSS: 2,660.78

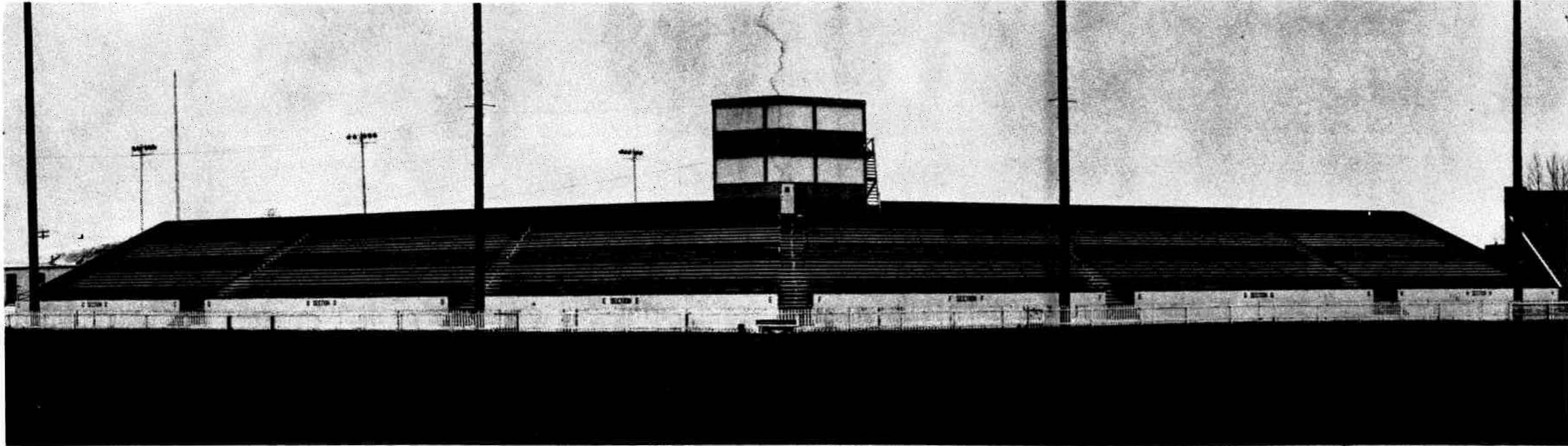
-- COMPARATIVE STATEMENT, MUNICIPAL SWIMMING POOL --

Construction Costs: \$ 55,850.4

YEAR	Approp- riation	Expendi- ture	Revenue	Seasons' Attendance	May 24 Attendance	July 1 Attendance	Free Swims	Operational Loss	Operational Gain
1940	5800.00	3756.00	1949.50	First day opened July 20,		638	-	1806.50	
1941	5000.00	4720.00	3114.40	25527	32	543	2198	1605.60	
1942	5000.00	5767.20	4601.30	26175	44	1139	2654	1165.90	
1943	6000.00	6343.62	4909.45	35918	411	998	4350	1433.17	
1944	6000.00	6538.45	6622.70	45414	98	413	4157		84.35
1945	6600.00	7070.40	4219.25	43919	488	993	3240	851.15	
1946	7000.00	7774.00	7001.95	48001	845	1372	1948	772.05	
1947	8300.00	8321.66	5911.90	41179	402	1428	2446	2409.76	
1948	9122.00	8644.43	6782.65	49203	817	1141	4840	1861.78	
1949	9000.00	10215.62	7568.60	51600	477	933	2916	2647.02	
1950	8500.00	10480.92	8213.15	62920	324	946	3212	2267.77	
1951	10000.00	10673.53	8636.90	60472	608	206	3011	2036.63	
1952	12000.00	9807.53	7146.75	37484	828	882	266	2660.78	

COMPARATIVE STATEMENT OF OPERATIONAL LABOR COSTS, MUNICIPAL SWIMMING POOL

Year	Supervision	Maintenance Men	Cashiers	Lifeguards	Locker Attendants	Total Yearly Expenditure
1940	510.00	578.20	284.60	385.20	-	1758.00
1941	856.50	821.90	400.50	552.35	-	2631.25
1942	527.50	1256.09	404.70	467.05	94.80	2750.14
1943	1186.01	1066.02	528.01	521.60	140.00	3441.64
1944	1500.34	1138.32	437.35	538.50	220.20	3836.71
1945	1221.54	1210.44	431.47	513.50	189.40	3566.35
1946	1908.99	1276.96	487.25	542.08	261.26	4476.54
1947	993.68	1288.79	569.01	608.11	364.98	6676.05
1948	867.23	2188.36	577.90	730.86	773.15	5137.50
1949	968.14	1721.06	621.20	923.70	881.80	5115.90
1950	1321.80	2154.81	525.00	1098.30	720.05	5819.96
1951	1185.52	2061.63	491.40	869.48	698.19	5306.22
1952	1481.90	2244.09	368.25	232.50	210.15	4536.89



## MEWATA STADIUM:

The year 1952 proved a very eventful year in this branch of the department. This year an agreement was negotiated with the Stampeders, under which the City of Calgary foregoes their gate percentage (12 $\frac{1}{2}$ %) on the Stampeders' Football games only, for a term not longer than eight years. In return, the club pays a yearly rental of \$5,000.00, plus their expense in the construction of the new seats. This was arranged to enable the club to pay off a two-year deficit. With the guarantee of the yearly rental of \$5,000.00, plus the receipts from other events held in the Stadium, there should be no operational deficit.

The club added considerably to the seating capacity of the stadium, at an expense of approximately \$20,000.00, their plan being to erect more bleachers on the north and south ends next year. Also, the club had portable box seats built at a cost of \$1,500.00. These were put on skids, and placed in front of the grandstand, on the track.

As usual the Stadium, Ball Park and Practice grounds were top-dressed and seeded, and as the weather was excellent there was a good growth of grass on all three fields. This year a new jumping pit was put in at the north end of the stadium, giving us three jumping pits in all, which will accommodate the various sports events much more easily. The track was graded and rolled, but the northeast corner is still too low, and will require attention next year. Other improvements at the stadium include the erection of a new fence at the north end of the stadium; erection of a new gate at the northeast corner, to facilitate the entrance and exit of the crowds during the season; the painting of the new stands and fences, and the re-numbering of the seats.

The Ball Park was also improved, the clay diamond being re-built so that the water would drain off. The grass in the outfield was not up to par, due, we believe, to the hockey rink remaining too long in the outfield. This area will need top-dressing and seeding in the spring.

At the close of the season, the Stadium and practice grounds were covered with approximately 30 loads of fertilizer, which will be worked into the ground in the spring.

The sports season opened officially on June 7th, with a game between the touring Tottenham Hotspurs, an old country soccer team, and the Alberta All-Stars, with an attendance of 3,368, exceptionally good for this time of year. The local season opened the following week, the teams playing every Wednesday and Saturday, throughout the season. Two games were played after the end of the season, because of the lateness of the eastern Canadian finals, which were held much later than usual this year.

Junior Soccer also came back into favor this year, and the teams played several games, some being scheduled for Sundays, to accommodate out-of-town teams. There was no charge for these games except a silver collection.

Other events of the season include the High School Sports meet, held May 21, 22, 23, and 30th, which was very successful; the Inter-Scholastic events; the annual Boy Scout sports day; the Calgary Separate Schools' track meet; Mount Royal College Track Meet; and also the annual display by the members of the City of Calgary Fire Department. After missing a year, the Scottish Highland games were again held, with a full entry in the dancing and piping events. The track and field events, however, had not as full an entry. The weather during the past season was ideal for all events taking place in this park. Junior rugby was very successful also this year, both financially and otherwise. The Junior Round Robin, sponsored by the Kiwanis Club, started on schedule, finishing October 5th. High School and Junior High School Rugby teams also had a successful season.

STADIUM STATISTICS:

Game #0, Attendance, 9,933	Game #5, Attendance, 10,729
" #1, " 10,781	" #6, " 8,039
" #2, " 10,152	" #7, " 10,799
" #3, " 10,766	" #8, " 8,526
" #4, " 10,421	" #9, " 10,285
Revenue, Sundry games:	2,551.66
Calgary Stampeders:	5,000.00
	<u>\$ 7,551.66</u>

MUNICIPAL GOLF COURSE:

The golf course continues to be one of the most important of the projects of this department.

During the 1952 season, approximately 30,000 games of golf were played, June being the best month with 5,356 players. The busiest day was July 1st, with 439 players.

Over the last two seasons there are many improvements evident at the golf course. The course underwent the usual yearly renovation, receiving applications of Presto fertilizer, 2,4-D, and watering where necessary. The generous rains during the early part of the season were very beneficial to the turf, the most harassing problem being the dandelions. The Gents' 18 greens and the Ladies' 9 greens were treated twice with 2,4-D, with appreciable results.

Early in the season, both the Ladies' and Gents' greens were spiked, seeded and dressed with compost. The temporary greens, both the Ladies' and Gents' received the same treatment, which certainly improved the approach to the regular greens. The tree planting project was furthered with the planting of another 97 trees and shrubs, and it is the plan of the department to have about 200 more planted during the coming season. A high fence, approximately 18 feet by 200 feet, was constructed southeast of the golf course, opposite Mr. Jacques' residence. Reasons for the construction of such a fence were that golf balls were continually being lost in the rough and frequently windows were broken. We hope this will be a safeguard against golf balls being lost or causing damage to private property.

New paths were made, leading from the starter's hut up to the tee, and also a path was made from the Gents' 12th tee, down through the gully near the steps already provided. This path will enable those with caddy carts to wheel them along more easily.

On the following pages will be found statements of yearly expenditures and revenue.

MUNICIPAL GOLF COURSE

Statement of Expenditure and Revenue

Year	<u>EXPENDITURE</u>				Total Expenditure	Total Revenue
	Construction & Improvements. (Clubhouse & Course)	Maintenance (Clubhouse & Course)	Expended from accounts other than appropriation.			
1915		962.25	398.93		1361.18	419.85
1916	1653.20		101.10	1810.43	3564.73	1803.30
1917		721.82	375.87	2166.86	3264.55	3005.30
1918	958.77	649.08	329.88	1757.47	3695.20	2777.50
1919	958.77	177.58	568.45	2335.49	4040.29	2634.00
1920	958.77	162.40	399.83	2971.26	4492.26	3301.75
1921	294.01		890.15	3216.18	4400.34	5712.50
1922	253.86	220.11	694.15	2845.66	4013.78	5771.15
1923	852.24		908.89	3149.30	4910.43	5993.15
1924	636.78	12.00	909.75	3102.26	4660.79	4688.20
1925	138.98	144.03	966.62	2863.79	4113.42	5049.25
1926		169.68	925.45	3258.48	4353.61	4892.25
1927	55.62	311.26	818.67	3164.21	4455.09	4188.35
1928	214.39	342.27	3254.91	2822.88	7686.78	6717.70
1929		113.01	3422.40	3945.40	8079.02	7056.80
1930	76.99	299.91	4370.09	4156.93	8947.40	10678.05
1931		576.02	4314.73	4192.31		
				Relief a/c, remodelling basement, kitchen and new water service		
				1201.09	10284.15	9701.75
1932	145.05	639.03	3812.74	2370.70	6967.52	6255.90
1933	218.83	387.43	3925.38	1887.56	6479.20	9561.70
1934	325.11	393.04	4337.33	2835.05		
				Relief a/c, log hut 60.00		
				Commissioners Contingent Fund, sewer 1265.74	9156.27	10732.70
1935	50.06	149.80	4824.31	3365.28	8389.45	9764.05
1936			1821.15	2774.79	4595.94	7283.30
1937			1561.71	4106.33	5668.04	7660.15
1938	231.85		1097.82	3399.85	4729.52	4739.10
1939	277.06	455.45	1167.10	4732.97	9106.77	5409.68
				Bridge, Engineers' a/c		
	8300.34	6886.17	45798.48	73630.30	6800.44	141415.73
						145797.43

MUNICIPAL GOLF COURSE

Expenditure and Revenue

EXPENDITURE

REVENUE

Year	Construction & Improvements. (Clubhouse & Course)	Maintenance (Clubhouse & Course)	Expended from accounts other than appropriation.	Total Expenditure	Total Revenue		
Brought forward:	8300.34	6886.17	45798.48	73630.30	6800.44	141415.73	145797.43
1940		610.00	2048.41	4363.33	Supplementary Approp, 5831.28	12853.02	5225.86
1941		516.25	1112.90	10201.87		11831.02	6724.96
1942			823.95	10184.60		11008.64	6640.21
1943		1134.23	937.67	4896.67		6968.08	6165.08
1944		1588.80	1480.61	6637.30		9706.71	7384.50
1945		2483.75	1619.97	8400.69		12504.41	6742.16
1946		926.90	1599.40	8880.39		11406.69	11366.75
1947		2045.00	1514.17	11001.25		14560.32	12785.65
1948			4315.59	10100.01		14415.60	12072.90
1949			2429.30	12001.07		14430.37	16412.50
1950			2527.70	10368.50		12896.20	14440.45
1951	77.25		3431.01	11859.89		15368.15	13989.65
1952	198.30		3597.96	13152.31		16948.57	19195.25
<b>TOTALS:</b>	<b>8575.89</b>	<b>16191.10</b>	<b>73237.12</b>	<b>195678.18</b>	<b>12631.72</b>	<b>306314.01</b>	<b>284943.35</b>

Page 19



#### CEMETERIES, NORTH CALGARY:

Queen's Park: This cemetery, although still in a development stage, is maintained at a high standard. The irregular terrain here makes development difficult, and a culvert bridge and considerable grading were required. Numerous smaller culverts were required to afford proper drainage. In addition, a road was built over the slough and around the new section, and the entrance way to the cemetery was paved. In this cemetery numerous improvements are obviously necessary for the further beautifying of the grounds, including the replacing of dying trees, fencing of the cemetery with chain-link fence, and the placing of a curb along the entrance way. The oiling of 4th Street would obviously be a boon to this vicinity, as during dry weather the entire cemetery is enveloped in a cloud of dust.

The area referred to as the mound, comprising Section C is now completed, which greatly improves the general appearance of the cemetery. It is hoped that the monumental trade and the public will soon realize the superiority of the flat marker both from a practical standpoint and for the sake of appearance. Section C, which is a flat marker section, is more easily maintained, a saving in both time and money.

As Queen's Park Cemetery is the main burial ground of the city, new sections are continually being mapped out. This past season 360 additional single graves, 250 double units, and 38 three-grave units were laid out. New water lines have been laid in various sections of the cemetery including one around Section C, and in Section A, to finish this area. An immediate need at this cemetery is of course a morgue and service building, including public lavatory facilities.

The total number of burials made in this cemetery for the year 1952 was 772.

#### CEMETERIES, S.E. CALGARY:

Due to the excellent growing season, and the absence of late frosts, the planting, digging, and clean up work was completed earlier than usual, and we were able to concentrate on further repair, including the oiling of roads.

As in previous years, we find vandalism, such as the stealing of flower holders and flowers from the graves, takes place. Possibly some statement through the press may help to stop a recurrence of this.

Several service clubs again held their memorial services here during the year, namely the American Women's Club, B.P.O. Elks, the I.O.O.F., and the Great War Veterans' Association. Our staff gave the required assistance, and on Memorial Day, August 24th, the Veterans' plots were decorated with flags and flowers, and men were on duty to raise and lower the flags, direct traffic and keep order generally.

Union Cemetery: As this is Calgary's oldest cemetery, yearly repair work is increasingly necessary. Several miles of roads were scarified, graded, gravelled and oiled by the Public Works Department. The main road from the entrance at 2 Street and 25 Avenue, through to the east gate on the Macleod Trail was done, and the road from the main road to the south end of the cemetery, next to the Macleod trail, and also a lateral road between Sections L and N. Also, the road between Section Y, and the Nursery gardens was banked with fill, which should help to keep spring run-off away from the Nursery gardens.

During the season, chemical weed killers were given a trial. "Polybar 80" and "Ammite" were applied, but definite results will not be known until next spring. Other work completed this year included the repair of sunken graves, returfing, painting of signs and loaming.

During the year 1952, 146 burials were made at the Union Cemetery.

Burnsland: The usual renovation was required at this cemetery, several replacements of trees and shrubs being made. 12 Birch, 6 Lilacs, 14 Poplar and 4 Caragana were replaced. Also approximately 200 mixed perennials were planted. Poplar trees on Section H, which were causing damage to the monuments were removed.

Several hundred yards of fill were hauled into the Field of Honor during the past season, as there is still quite a large depression at the north end of this section to be levelled. Each year we must work towards the filling of this area, until it is completed. Another block in the Field of Honor was mapped out, and lot markers supplied. It is the intention of the department to do a certain amount of development work in the Field of Honor each year, until the entire section is completed.

The number of burials made in this cemetery during the year: 278.

St. Mary's: This cemetery is still in the process of development, with several new sections being mapped during the season. Section G, the non-care section, was levelled and prepared for loaming and seeding. When completed, this area will add greatly to the appearance of the entire cemetery.

174 burials were made in this cemetery during the past year.

Chinese: In this cemetery, the required maintenance work was carried on throughout the year, about 60 synken graves needing repair.

New plans have been drawn of this cemetery, showing the positions of the permanent fixtures, such as the Pagoda, the garbage disposal, water lines, and fence. Included in the plans are diagrams of flower beds, which we hope to be able to start working on next spring.

#### BOULEVARDS:

A considerable amount of repair work, including replanting, filling and re-seeding was carried out on our boulevard project during the past season. A number of complaints with regard to overgrown trees were investigated, as in many cases the root systems interfere with the sewer. Cottonwood trees, on many of the older boulevards, were particularly troublesome, and had to be removed. In several places low hanging branches were pruned as the view of both pedestrian and other traffic was being obstructed. In the South Calgary district, a power sickle mower was in operation for the greater part of August, and proved a big success, as in many places large areas of boulevard required mowing.

During the season 482 trees were headed back and 314 cleared for the Electric Light Department. Each year a record is kept of the locations where overgrown branches interfere with the wires, and the Parks department take charge of these removals.

The wholesale invasion of the city by insect pests, including aphids and green fly, brought ruin to a great many boulevard trees, and additional work for the men, who were required to take a spraying device to almost every section of the city.

#### BY-LAW WORK:

This project saw a very successful season, with 12,775.5 feet of new boulevard having been constructed. It is hoped that the department will be able to complete a much larger by-law program during the coming year, as the extensive housing projects in the newer districts are reaching completion far ahead of the local improvement by-law work, leaving the city with several miles of boulevard to be constructed each season. The supplying and planting of trees and shrubs is also included in the completion of a boulevard, Ash, Silver Birch, and Elm being among the varieties recommended. So many complaints have been received with regard to the obnoxious cottonwood trees of this city that the department will use only certain varieties of trees and shrubs. This also ensures a uniform appearance and symmetry in a block. In the past season 270 trees and 256 shrubs were planted on new boulevards, with an even greater number planted as replacements where unsightly trees had been removed.

BRIDGE APPROACHES:

An appreciable improvement can be seen here, with the rebuilding of approximately 90 feet of rustic fence, and the placing of an ornamental "island" at the intersection of 10th Street and Westmount Boulevard. All shrubbery and flower beds gave a splendid display during the past season.

BANKVIEW PLOT:

Here the usual maintenance work was carried out, such as mowing of grass, cultivating of borders, and the pruning of trees and shrubs.

BALMORAL CIRCUS:

This park was very attractive this year, and maintained its color throughout the summer. A good number of the trees and shrubs required pruning, which was completed in season.

BEAUMONT CIRCUS:

The workmen gave this small ornamental area their usual care, with very good results. During the later part of the season all the shrubs were pruned.

CAPITOL HILL PARK:

The flower beds at this location did very well this year, and did a great deal to enhance the district itself. Along with the usual renovations, the area has been dug over in preparation for next season.

CARTIER PARK:

Owing to improvements made here this summer, the display in this park was above average. An adequate amount of rain early in the season kept the lawns in good condition, and saved on watering. The perennial beds were good for the first time in several years. It is the intention to improve the undeveloped portion of this park at some future date, as the long grass, etc., is beginning to look unsightly.

CENTRE STREET CUT:

This past season the shrubs on both hillsides required pruning, and the long grass was mowed and raked. In all, 340 trees and shrubs were pruned. The work done here has greatly improved this area.

CITY HALL GARDENS:

The floral display here consisted of Geraniums, annuals and tulips, which had been planted during the later part of the season of 1951. The planting required was as follows: 626 Geraniums; 300 Alyssum; 2 Dracenas; 80 Mme. Salleroi; 480 Lobelias; 420 Pansies; and 300 Stocks.

CLIFF TRIANGLE:

This small sunken garden is in very good condition, except that damage was done by children using the park as a playground. The Zinnias at this location made an exceptionally good showing, many of the plants reaching a height of three and four feet, with immense blooms in red, yellow, pink and burnt shades, the envy of every gardener who saw them.

COSTE HOUSE GROUNDS:

This area was greatly improved this year, and the display here in the future should be very pleasing. In previous years, there were five large oval tree beds which were very difficult to maintain, and consequently it was decided to grass these in, some seventy-eight trees being removed.

Approximately 8,950 square feet of ground were sown to grass, and a new gravel foot path, four feet wide and about 200 feet long, was made in the centre of the grounds to the main entrance of the building. Six rustic steps were placed on the steepest portion of the path, as it was thought safer during snowy and icy weather conditions. A pattern of several new flower beds was made at the front of the building, and proved a decided success this year. Also, water lines were installed so that the grounds can now be watered from both sides of the building.

CRESCENT PARK:

This ornamental park along Crescent Road is now in good condition, as the south end by the rockery has been renovated. The shrubs were taken out, and replanted to form a hedge. Numerous perennials were also planted here. The necessary replacements were made, and all flower beds dug over in preparation for the coming season.

CRESCENT ROAD TRIANGLE PLOT: (Crescent Road and 1st St. N. W.)

This area was renovated, and the yearly pruning and digging has been completed preparatory to early spring work.

CRESCENT TRIANGLE: (Crescent Road and 3rd St. N. W.)

The display at this location was very pleasing during the entire summer, and makes this corner quite attractive. Ornamental corners of this type make a city picturesque, relieving the monotony of signpost and pavement.

EARL GREY PARK:

At this park, conditions were very favorable this year, the new flower beds and shrubs making an excellent display. As there is a playground area adjacent to the park, some trouble was met with, the children insisting on playing in the park and damaging the plants. Two oval flower beds were mapped out in this park during the month of June, giving the area more color. The central group of shrubs, Prunus, winter killed, and were replaced with nine Lilacs, one small spruce and one Cotoneaster needed replacement.

EAST CALGARY ROTARY PARK:

Since the thick brush and trees in the shrubbery around the playground were cleared out, the whole area is more easily maintained. Also, the hedge was thinned here and the lawn kept in very good condition.

ELBOW PARK BUS LOOP:

This small ornamental area would be much more attractive if a low hedge were added, and the curbing completed. The grass and flower beds were very impressive here during the past season.

ELBOW DRIVE GARDENS:

The flower beds at this location are usually very impressive, and draw comments from many Calgary visitors. The Petunias were the best this year, as some of the earlier varieties were affected by a heavy frost soon after the plantings were done. All areas here have been loamed and prepared for spring planting.

ELBOW DRIVE ISLAND:

This small but attractive ornamental island in the centre of the road did very well during the past season. Several visitors took colored pictures of the tulip bed, which was really outstanding. A problem here is to find some means of stopping the pedestrians from using the grass edge as a sidewalk, as signs seem to be of little use.

#### ELBOW PARK SWIMMING POOL GROUNDS:

A wonderful improvement here during 1952 was the installation of gas, making the building so much more convenient and the lunch room a very comfortable place. Also, the old fountain was removed and a new one installed over a concrete platform, which also contains a water shut-off box with an iron cover. The fountain is greatly appreciated both by children at play and the passer-by, during the heat of summer days. Other improvements included the placing of a new wooden seat on the south side of the building, to replace one broken by vandals, and the placing of a new metal teeter support set in concrete, to replace an old wooden one.

Because of the abundant rainfall, the lawns and flower beds were in excellent condition, but attendance here showed a decline, due no doubt to the high incidence of Poliomyelitis.

#### GARDEN CRESCENT:

This secluded shaded spot was very impressive this year, but with so few hours of sunshine each day, it is difficult to grow plants that make an outstanding and colorful showing. Instead, this area is maintained with plants that favor shaded conditions. At the south end of the Crescent there is a fountain with a vine-covered canopy. The vines were cleaned off to the ground in our autumn clean-up, and all beds and borders loamed and prepared for early spring activities. A number of residents have requested that the fountain be either repaired or removed.

#### GLADSTONE ROAD PLOT:

The trees and shrubbery are becoming quite dense at this little park, and the department intends to have a considerable amount of pruning done. Otherwise this plot made a splendid showing this year.

#### GLENCOE GARDENS:

The floral display was outstanding this year, particularly the Snapdragons, which were a blaze of color. Both visitors and neighboring residents alike were highly impressed, and our workmen were proud to think that their efforts were not in vain. The removal of several large trees next to the shrubbery border will benefit the smaller plants and the shrubs.

#### HILLHURST PARK:

During the past season, Hillhurst Park was completely loamed and seeded, a stipulation in the agreement between the Community and the City of Calgary. Chain link fence was erected along 5th Avenue and up 14th Street Northwest. The department has still a considerable amount of fencing to complete in this district, and it is hoped it can be erected next season.

#### HOUNDSFIELD HEIGHTS:

In order to meet the recreational requirements of the residents of this new district, a triangular floral park and a small palyground have been mapped out, levelled and graded in readiness for spring seeding.

#### INGLEWOOD:

This recreation area, in East Calgary, was developed in 1952, with an area at the rear of the new firehall being graded and levelled. However, the department has been informed by the Provincial Fire Marshall that a portion of the playground area cannot be used because of its nearness to the B. A. Refinery. With the resulting hazard to children at play, it would be unwise to extend the playground too far in that direction.

#### HARVETTA HEIGHTS:

This area was graded and levelled off in readiness for loaming and seeding in the spring. A backstop, and later a hockey rink was installed this fall for the benefit of the children in that district.

#### JACQUES' CORNER PLOT:

The lawns at this location are not in very good condition, as the park is terraced, and there are no watering facilities here. It is the intention of the department to repair the rustic fence and have a watering system installed in the near future.

#### KIWANIS PARK:

Because of its sheltered location, both perennials and annuals made a splendid showing here. There were approximately 100 assorted perennials and 1,560 annuals planted, and the usual maintenance work was required. With its central location, this ornamental park is a favorite and many favorable comments on the floral display have been received by the workmen.

#### KILLARNEY PARK:

Four large flower beds were cut out and prepared for planting in front of the Library, which is situated in this park. The usual care, such as watering, cultivating and mowing of grass, was carried out during the growing season.

#### KNOBB HILL:

With the rapid expansion of the city, the department must meet the recreational requirements of the outlying areas. Knobb Hill is a comparatively new district, and just this past season a large area was prepared for spring seeding. In a year or two this area should reach the standard of the older city playgrounds, and will be of great benefit to the younger members of the vicinity. The nature of the soil and the terrain made this area difficult to landscape, some areas being partially under water at times.

#### LEVIS PARK:

In the spring of 1952, eight small spruce and twelve birch trees were planted and staked in Levis Park. More flower beds were also added. A great deal of difficulty was experienced with wash-outs on the terraced section, and three small rockeries were built to eliminate this problem. The rockeries were planted exclusively with Violas, and proved very impressive until the new curb and gutter were installed, when many of the flower beds were damaged. Due to some error, the boundary lines here had not been definitely determined, and consequently when the curb and gutter were to be installed, the park borders were disrupted.

#### MEWATA BOULEVARD AND TRIANGLES:

The trees and shrubs of this ornamental area were becoming quite overgrown and required pruning, after which the usual spring maintenance was given the plots. Both annuals and perennials made a very attractive showing during the past season, and with the construction of a new rustic fence, the area is far more impressive.

#### MEMORIAL PARK:

As in previous years, Memorial park continued to be our most popular park. This year the geraniums and Antirrhinum were very outstanding, however, the perennials also did remarkably well. Some difficulty was experienced in ridding the lawns of patches of snow mould, these requiring raking out and re-seeding. Also, this season, it was

necessary to spray regularly to rid the park of insect pests, which were so prevalent this past season. Improvements this year include the replacing of approximately 522 feet of 1-inch water line, and the erecting of 255 feet of 4-foot Frost fence on the north and south sides of the park.

#### MEMORIAL DRIVE:

Further work was done on the dyke here, lawns mowed, and the trees and shrubs pruned. However, work at this location seems very futile, as the yearly destruction from floods and damage from traffic is high.

#### MOUNTVIEW PARK:

This is one of Calgary's newer ornamental and recreational areas, and will be appreciated by all members of the community, both young and old, as yearly work progresses. During the past season, a children's wading pool was constructed in the playground area, an attraction that heightened the interest of nearby residents considerably. Also, during the winter months, the large oval-shaped speed-skating rink makes the area a popular spot at this time of year. The requirements of midget and juvenile hockey players are also satisfied, as the department maintains two hockey rinks.

For those who prefer passive recreation, Mountview's floral park offers a splendid display. The flower beds are in very good condition, and were very colorful from May onward. A number of the small beds have been seeded back to lawn, to facilitate the operation of mowers between the larger beds.

#### MOUNT PLEASANT ROTARY PARK:

This park also is a combination ornamental and recreation park, with the added attraction of a bowling green and tennis courts. This year the driveway leading from No. 1 Firestation south to the tennis court was loamed and seeded to lawn, an area of approximately 5,200 square feet. The new club building of the Tennis Club, now in the process of construction, should be very attractive when completed, and an asset to this park.

The children's wading pool here draws a high attendance during the summer months. However, as a result of the outbreak of polio, it was not as high as that of 1951.

The flower beds and rockery were extremely colorful this year, and a credit to the city.

#### NEW ROSEDALE PARK:

The lawns and flower beds in this prominent park were outstanding this past season. Many favorable comments were received from visitor and citizen alike. The people in the district are very anxious that this development be continued around the crescent and down 10th Street Northwest.

#### NEW ROSEDALE RECREATION PARK:

A hockey rink was installed in the recreation portion of this park. Owing to the unevenness of the ground, a large amount of fill was hauled in to level the area where the rink was placed.

#### O'BRIEN'S CORNER PLOT:

This is another shaded park, and sun-loving plants cannot be planted or grown to advantage here. However, the beds, lawns and shrubbery made a very good showing during the past season. The rustic fence surrounding this plot is continually being torn down by children on their way to the river.

#### RILEY PARK:

Riley Park was truly a beauty spot this year, with the lawns and floral display surpassing all expectations. Because of the many facilities, this park is one of the most popular recreation areas in the city, and the fact that the inter-city cricket games are held here assures increased attendance. This year, unfortunately, the pool was closed by city health authorities, due to the high incidence of poliomyelitis. In the early part of the season, however, hundreds of children were enjoying the pool.

This year, a new building consisting of dressing rooms, lavatory and locker facilities for children using the pool, and a central activity room for the use of the summer playground supervisor, was constructed on the south side of the wading pool. This is a wonderful improvement over the old building, and should prove an asset to the leaders of organized recreation.

The park was further improved by the erection of chain-link fence, from the 6th Avenue entrance southward around the southeast corner of the park. The old rustic fence was becoming unsightly and of no value. We hope to replace the remaining fences with chain-link fence as soon as possible.

The Parks Department made special efforts to maintain the Cricket Pitch for the summer games, and in this connection received the following commendation from the president of the Calgary and District Cricket League:

"On behalf of the Calgary Cricketers, I wish to thank you personally and your staff generally, for the efforts that have been made to have our Riley Park Grounds in such excellent condition for the inter-city game with Edmonton."

Some damage was done to the flower beds and shrubbery of this park, by vandals and reckless car drivers, but with the enforcement of the nine o'clock closing regulation, this problem was eliminated.

#### READER CRESCENT PARK:

This is a comparatively new park in the Renfrew district, and when completed, should add much to the general appearance of this new district. A goodly number of trees and shrubs were planted this spring, and the lawns were kept in very good repair throughout the summer. The department hopes to have flower beds mapped out as well, to further enhance this location.

#### RICHMOND PARK:

During the past season the playground portion of this park was levelled, graded, and loamed, and a hockey rink installed. As soon as weather permits in the spring, it is the intention of the department to seed the area.

#### RIDEAU ROAD PLOT:

This ornamental area is in very good condition. However, several complaints were received regarding the density of the trees and shrubbery, and it has been decided that these should be pruned and thinned, and an area seeded back to grass, with possibly one or two flower beds remaining. As there is a water service here, the lawn should do quite well.

#### RIVERDALE AVENUE PARK:

Owing to the fact that the Crab Apple trees were damaged each year by children, these trees have now been removed and replaced with 15 Birch trees. These are more suitable for boulevard planting, and should in time be a decided improvement. The grass area on the lower portion of the park along the river was mowed, and it is intended that the native trees and shrubs be pruned and thinned out at some future date.



RIVERDALE AVENUE TRIANGLE:

The flower beds here did not do as well as those of last season, as the area was infested with aphids. Stakes have been placed for the installation of a new curb and gutter next season, and this should improve this location a great deal when completed.

RIVERSIDE RECREATION PARK:

A considerable amount of work will be required on this play area before it can be brought up to standard. The rough grass on the playground was cut during the growing season, and the whole area renovated.

ROSEVALE PARK:

This large area of park land is rather difficult to maintain because of the extremely overgrown condition of the shrubbery. This year eight new posts were replaced in the rustic fence to stop automobile traffic from using the playground as a thoroughfare. It is hoped that we will be able to remove a large number of the trees and shrubs, leaving a tree and shrub alternating, as a border, with the remainder of the area treated as a boulevard.

SOUTH MOUNT ROYAL PARK:

The display of Dahlias in this park was outstanding, and many visitors took pictures here and remarked on the beauty of the flowers.

To improve this park, the department had a concrete manhole installed, with an iron cover. The former one was dangerous to children and unsightly. The cinder paths in this park were to be loamed and seeded to grass this year, however, time did not permit.

SHORT STREET PLOT:

Borders and flower beds were dug over and planted with flowers in this attractive plot, and during the season a very pleasing display was obtained.

SUNALTA RECREATION PARK:

A number of shrubs were replaced in this park during the past season, and after the usual early spring renovations this area made a good showing.

SUNALTA TRIANGLE PARK:

This small triangular park does much to brighten up this vicinity, and during the summer months made an attractive showing.

SCARBORO PLOT:

As usual, this plot was a beauty spot, and the regular seasonal cultivating was carried out during the year. All trees and shrubs were pruned, and beds have dug over in preparation for the coming season.

SOUTH CALGARY PARK:

This year the City of Calgary was approached by the Kinsmen's Club with regard to their construction of a swimming pool on the south-east portion of this park. Further landscaping of the park by the department will not be attempted until the pool is completed. Also the Kiwanians constructed a children's wading pool in the northwest corner of the park, the Parks Department putting in the sewer, all necessary excavations and supplying the gravel. These features, along with the new firehall and utility rooms, should make this park one of the finest outdoor recreation grounds in the city.

#### TECHNICAL SCHOOL GROUNDS:

The expense involved in the development of these grounds is borne by the Provincial Government, while the work is to be done by the City of Calgary. This year the flower beds were very attractive and the lawns were in excellent condition. The flower beds have been dug and the grounds loamed in preparation for spring work. During the year, twelve poplar trees were planted as shade trees, and also six spruce and six Birch.

#### TOMPKINS PARK:

This ornamental park seems to be considered a playground, especially by students from Western Canada High School, who spend their lunch periods here. Although the proper receptacles are placed in the park for use in disposal of paper and refuse, the park very soon becomes littered, causing the staff of the Parks Department much more work.

The floral beds were in good condition during the summer season, consisting mainly of three beds of annuals: Antirrhinums 1,560, and Petunias 477.

#### TRIANGLE PLOTS: (8th St. W., and Amherst Street)

The ornamental triangles at this location were given the usual annual care, and shrubs were trimmed for traffic clearance. A fourth triangle in this area is to be turned over to the Elbow Park district for maintenance.

#### TUXEDO PARK:

With the attraction of a children's wading pool, this park is a popular spot during the summer months, and since the shrubbery was pruned the general appearance of the area has improve considerably. Ten trees were removed, and about 200 trees and shrubs pruned back.

#### TRIANGLE: (1st Avenue and 5A Street Northwest)

This small ornamental area is planned after the pattern of a sunken garden, and is quite attractive. The workmen of the department gave it the usual care, including cultivating, mowing and watering.

#### 18th STREET PLOT: (Between 22nd and 23rd Avenues West)

A small children's playground was graded in preparation for seeding this coming spring. Because of the fact that the department was supplied with the fill for this depression, we undertook the development of this area this season.

#### TALON AVENUE PLOT:

Here is another triangular park with a "sunken garden" effect, that did very well this season. Maintenance here was carried out in the usual manner, and seemed quite adequate. The flower beds did very well, but should be made larger to be more effective. As usual the rustic fence took a good deal of punishment from vandals. We hope that at sometime in the near future the fence will be replaced with chain-link fence.

#### 34th AVENUE CUT: (Christ Church)

The rustic pathway through the 34th Avenue Cut was repaired and kept in good condition for pedestrians who use this park.

#### J. H. WOODS PARK:

This is another ornamental area along the Elbow River which gets added use as a playground and rugby field by local teen-agers. The department is very much in need of a watchman or parks policeman in this park, as the children will not refrain from using the lawns as play areas, and the foreman here cannot take time to keep a constant watch on such activities, and extensive damage to the lawns and floral displays result. However, in spite of this problem, both the perennials and annuals did very well, and several comments on the display were passed by local residents and visitors.

#### WEST MOUNT PLEASANT PARK:

The time and effort to improve this park during the past two seasons is more and more evident, and with the splendid growing season of 1952, this ornamental area made a wonderful showing. This is a relatively new park, and each year new planting is done, and more flower beds are mapped out and prepared. During the past season several replacements among the young trees were required, namely 6 spruce trees, 12 choke-cherry trees and 4 birch trees.

#### WINSTON HEIGHTS:

In this comparatively new park, the flower beds did very well during the year, and to further beautify the area, 10 shrubs were planted in front of the building. All areas have now been prepared for the spring work.

#### WATSON'S CORNER PLOT:

A new triangle flower bed was made at this corner in 1952, which did much to brighten the intersection. Also, a new water line and shut-off box were installed, and in more convenient location. The hedge was improved with several open spots filled in, and the lawns and flower beds prepared for next year's work.

#### WOLFE STREET PLOT:

This small corner, approximately 2,350 square feet, situated at the corner of Prospect Avenue and Wolfe Street, was loamed and seeded to grass this fall, and the ground has been prepared for next season's work, when flower beds will be mapped out. This is a great improvement over the former untidy and weed-infested corner.

#### PARKS SHOP: (13th Avenue and 6th Street East)

The Parks Department shop, which is the hub of departmental activities, is located at the site of the old Isolation Hospital and adjacent buildings. This is also the storing place of all unused equipment, tools, supplies including fencing, playground apparatus and machinery. A considerable amount of carpentry must also be done here, in connection with the maintenance of the greenhouse, nursery, wooden playground equipment, playground buildings and rink sides. The repair of all equipment and machines and tools both for parks and playgrounds, fencing, and the repair and maintenance of mowers for other departments such as the General Hospital, School Board, Fire, Electric Light, Waterworks, Glenmore grounds, Traffic and Welfare Departments are also done by the shop mechanics.

#### PLUMBING DIVISION:

With the expansion of the parks system, the plumbing branch of our department is one of increasing importance. Numerous new locations which have been developed require water extensions before further progress can be made, and with the servicing of the 128 present connections, extensive repair work and new water and heating installations, this division of the department is kept very active.

Each season brings a variety of work, for instance, in the fall of the year, all parks buildings must be checked to see that heating is adequate for the coming colder weather. Both heating and water systems at the greenhouses are of vital importance, as is the overhead sprinkler system and the three miles of sprinkler lines at the nursery. At the greenhouses are, in addition, four steam boilers, two hot water heating systems, one gas soil sterilizer, and one steam heated sterilizer, that need regular checking and repair. During the operation of the Municipal Swimming Pool, an extensive plumbing system, including two steam water heating units, two filters, and one chlorinating unit, require daily attention. Also, both the parks and plumbing shop buildings have a detailed system that require regular inspection and care. In addition to this, all park and playground areas must be serviced, making almost 65 miles of pipe, 128 connections and 65 manholes to be serviced. When required, the heating and plumbing facilities at the various playground buildings must be attended to, and during the winter months, when over 100 pleasure skating and hockey rinks are flooded regularly, connections there must be checked.

New work on several parks this past year includes the installation of surface water systems at Hillhurst Park, West Hillhurst and the Memorial Drive and Renfrew Playgrounds. At Killarney Park, a concrete manhole was installed at the wading pool, with a water fountain on the top. Also, at the new Mountview Park, and South Calgary Park, sewer and water lines were put in for the wading pool, which was constructed this past season. At Richmond Park, a complete 2-inch water system with four 1-inch branch lines was laid, and at South Mount Royal Park, a concrete manhole, new valves and drain-offs were put in. At Memorial Park, the water system was extended and gas line laid, and heater installed in the workmen's shack, heat being piped to the comfort stations. Mewata Stadium also had better water services installed, and a stove put in at the Junior Rugby equipment room. In addition, a new fountain and taps were put in for the convenience of hockey players. In the cemeteries, several new extensions were installed, standpipes erected where necessary, and other improvements generally, to ensure better pressure and the use of less hose.

#### CHARITABLE AND WORTHY ORGANIZATIONS ASSISTED:

It is the practice each year for this department to give its wholehearted support to organizations interested in the furtherance of horticulture in this city, and this year was no exception. In addition to the numerous lectures, slides and demonstrations put on, the department aided materially by the moving and erecting of temporary bleachers for the annual flower shows of the Gladiolus Society, Dahlia Society and the Horticultural Society.

This year, the department agreed to landscape the grounds at the Isolation Hospital, and during the season completed this project. This should make a decided difference in the appearance of this area. The Parks Department has also assisted in the upkeep of the grounds at 707 - 13th Avenue West, the property known as Red Cross House. Also, members of the parks staff did all necessary pruning for the Old Folks' Home.

As in previous years, bleachers were placed at all available vantage points in the city during the Stampede Parade, for the benefit of wounded veterans from the Colonel Belcher Hospital, and from other rest homes throughout the city.

#### RECOMMENDATIONS:

You are all aware of the accelerated expansion of this city during the last two or three years, and no doubt realize the resulting responsibility left with all civic departments. The demand for development of new recreational areas, and for many miles of local improvements which include the construction of boulevards, paving, construction of sidewalks, etc., are ample proof of the progressiveness of our city.

In the Parks Department, damage to our property and the resulting expense could be averted by the complete fencing of ornamental and recreational areas and cemeteries with Frost fencing, of the type already in use at Riley Park. This type of fence is both practical and ornamental, and is used for these purposes in most Canadian and American cities.

Queen's Park Cemetery being our chief burial ground, expansion is far ahead of our improvement program. The construction of a mortuary and a service building, which would include public lavatory facilities, are two of our immediate objectives. In the near future, we hope to improve the roads, perhaps pave the entrance-way, and fence the cemetery with chain-link fencing. Also, a new 8-inch main should be constructed from 4th Street Northwest, in a westerly direction, across Nose Creek, in order to service the new sections being opened up in the west end of the cemetery.

Another persistent perennial among our season's problems is the difficulty of obtaining experienced staff for the Municipal Swimming Pool. Too often it becomes necessary to hire young and inexperienced people rather than operate the pool with a shortage of staff. Our short out-door swimming season makes it difficult, as we must employ staff who are satisfied with seasonal work. The solution here would be to secure the services of some one whom we could employ throughout the whole year, and who would be capable of operating the pool, and possibly fit into activities of the Recreation Division during the balance of the year.

The increasing attendance at all games and sports events held at Mewata Stadium makes it necessary to build additional rest room facilities. There is a great need of such a building on the north end of the stadium, as even the building on the south end is insufficient to accommodate the 10,000 patrons at rugby games.

COURTESIES:

I would like to take this opportunity of expressing my sincere thanks and appreciation to those who have co-operated so fully with this department during 1952, including the Assistant Superintendent, Mr. S. H. Daines, the Director of Recreation and his assistant, the office staff, members of the outside staff, Mr. Van Ostrand and members of the executive of the Zoological Society, members of the Safety and Personnel Department, the Engineers' Department, Land Department, and Town Planning Department.

Although many perplexing issues confront us, we can overcome these much more easily when met with a spirit of co-operation and goodwill, such as it has been our good fortune to encounter.

Respectfully submitted,



Superintendent of Parks  
and Recreation Department.



SUMMER FUN AT RILEY PARK



WINTER OUTDOOR RECREATION

## RECREATION DIVISION REPORT

- 1952 -

In presenting this, my fifth report, since taking charge of the Recreation Division, I will confine it generally to a report of the activities carried on in the division. I note that Mr. Munro has covered the development phase of the division, and there will be no need to repeat on that matter.

### SUPERVISED PLAYGROUNDS:

In the year 1918 this city, in conjunction with the Calgary Playground Association, embarked on a program of supervised play during the summer school holidays, the department supplying the equipment whilst the association provided the supervision. One year later, the City of Calgary underwrote the salaries of the playground supervisors at nine centres, and since that time, the supervised play program has been a service offered to Calgarians during the school vacation period by the Parks Department.

During the 1952 season, we commenced operations at twenty locations with three district supervisors having 22 playgrounds under their supervision. A specialist was also employed to teach swimming to girls between the ages of eight and fifteen years.

Prior to opening the centres, ten of the leaders were provided with transportation to Red Deer to attend a course for play leaders under the Provincial Department of Education, Health and Recreation Branch. As a number of the girls employed were senior high school students, it was impossible for them to attend the above course, and therefore, a short period of in-service training was conducted at Mewata Park under your Director, with Mr. J. R. Houghton, Miss M. Bird, and Miss B. Lepper as instructors, using the morning periods for instruction and going to the playground each afternoon for field work.

Early developments indicated that 1952 would be one of the finest years of activities, but a polio epidemic struck Calgary during late July, and had a very adverse effect on the attendance. After consultation with the Assistant Medical Health officer, it was decided to close all supervised playgrounds, effective August 13th. As a result of this decision, all our season's closing competitions and displays were dispensed with. Misfortune visited the Earl Grey Playground when the supervisor, Miss M. Peters, was stricken with polio and confined to the Isolation Hospital. This young lady was later removed to the University Hospital in Edmonton for further treatment and was still a patient there at the close of the year. In spite of all our difficulties with a restricted program, due to the closing of all wading and swimming pools on the 31st of July, our total participation in the events shown on the statistical report attached hereto, for the six-week period, was 49,582.

A very successful venture was proven in the division of the city into three districts, with a senior supervisor in charge of each. The experience of the seniors was of great value to the first-year supervisors employed. Miss Marilyn Bird rendered very efficient service, and I am hoping that this young lady can be found full-time employment in the division on the completion of her course at the University of British Columbia. Her three years' experience in our playground division, also her skills in craft work and group activities, fit her for the position as supervisor of girls' work and crafts, for this department.

At the close of the playground season your Director was assigned to assist the Assistant Superintendent of Parks during the vacation of Mr. A. Munro.



### SUPERVISED RECREATION CENTRES:

Supervised Recreation Centres were in operation in the northwest and southwest sections of the city during the months of January to April at the conclusion of which the leaders were released from our employ. A very successful program had been carried on in co-operation with the Community Clubs in the various neighborhoods, ranging in variety from concert orchestra and drama groups to tumbling and tap dancing.

Recommendations were made in our last report that every endeavor should be made to make permanent staff appointments for those persons trained in the skills of Art, Crafts and Recreation, to provide the department with a nucleus of trained personnel available for direction in winter recreation centres, and to undertake the in-service training program of summer playground supervisors. With this in mind, an effort was made to engage suitable leaders for the three district centres we planned to operate during the fall and winter months of 1952-53.

As a result Mr. K. McKenna who, after receiving his elementary and high school training in Calgary Schools, is a graduate in Recreation from the University of Iowa, was engaged to supervise the southwest district, and Mr. J. Chikinda, a former physical instructor with the Calgary Y.M.C.A., was placed in charge of the northwest district. These two gentlemen are conducting a very active program in their respective districts. Mr. McKenna uses Richmond School three evenings per week, and Glengarry school two evenings. Also classes are organized in special subjects three evenings and each Saturday morning in the auditorium of the Glengarry branch of the public library. Mr. Chikinda has a program operating two evenings per week in Queen's Park school, two evenings in King George School, and one evening in Capitol Hill School. Both these leaders have been granted instructional periods on the skating areas of the neighborhood Community Clubs.

Accommodation in City Schools has been the greatest problem in operating these centres, as we have not yet been able to persuade the school board officials that our program should be given precedence on the dates that are agreed upon in the fall of the year, and consequently, cancellations are requested of us that other activities may take place.

With the addition to our staff of Miss M. Bird in May, I feel confident that the three district centres will be able to get into full swing for the fall session of 1953. In-service training in craft work is presently taking place each Monday and Thursday morning, to acquaint the two male directors with the crafts on a pre-school and elementary school level. These periods of instructions are being given by your director.

Each centre is now equipped with a basic leather craft kit, an electric 3-speed record player for dancing and music appreciation groups, tumbling mats, spring boards, box horse, also a supply of equipment for table tennis, volleyball, pingminton, floor and table games, plaster moulds, clay, crepe paper, and supplies for handicraft.

### WINTER SPORTS:

Eight divisions of hockey have been organized, and games are played on nineteen rinks which provided practice and game time for the fifty teams in these groups. Due to uncertain weather, I feel it would be advisable to provide a closed natural ice rink for the use of these clubs during the snow storms or extremely cold days.

### SKATING FACILITIES:

Considerable renovation and regrading of the properties used for pleasure skating and hockey rinks was carried out, and several new areas were prepared. The practice of recessing the surface to provide permanent banking was followed, as it is proving very satisfactory and less costly than the old manner of banking with clay each fall and removing it in the spring. When such skating areas are completed by loaming and seeding,



these sites also make a very fine play area for summer use. The rapid expansion of the City brings many requests for new skating areas. This year many were received too late to enable the grading work to be completed before freeze-up. New areas include Hounsfield Heights, Briar Hill, Pleasant Heights, South Elboya, Knob Hill, Parkdale, Inglewood, Broadview Recreation Grounds, and Grand Trunk.

Re-surfacing was done at Grandview, Parkhill, Windsor Park, Riverdale, West Calgary, St. Monica, and Winston Heights rinks, thus providing a more level surface for flooding. A great deal of construction work will be necessary to prepare areas for the 1953 season, much of which will be carried out in conjunction with new playground development.

#### FLOODING:

The flooding of the greater number of the hockey and skating areas was carried out by our own crews, equipped with three trucks to each of which is attached large reels capable of carrying 600 feet of 2½" diameter rubber hose. Water hydrants close to the rink sites are used, each truck servicing approximately 25 areas per week, flooding once weekly, weather permitting. The clearing of the rinks, to enable the crews to flood, is a very heavy task. In the early months of 1952, we had frequent heavy snow falls, and it was necessary to rent snow plows to clear the areas. At times the rinks were closed for periods up to ten days, as we lack sufficient equipment to clear the rinks any sooner.

The purchase of a small tractor to be equipped for snow removal is advisable as we now operate forty-nine hockey cushions, and an extra sixty-three pleasure skating sheets, all of which require cleaning after each snow storm. The purchase of a tractor would also enable us to do a more satisfactory job of maintenance of our football fields and ball diamonds during the summer months. This work is now done by a small sickle mower which cannot cover the areas twice each season.

Since the Exhibition Board have turned the old Victoria Arena into a curling area instead of a hockey rink, the need for a closed rink in Calgary is becoming more pressing. Due to snow storms and unfavorable weather, either extremely cold or mild days, the problem of completing schedules in the eight or ten weeks during which ice can be maintained outdoors in this climate, is growing. A closed natural-ice rink would overcome a lot of the difficulty as the teams could continue to play in spite of out-door conditions. The space now available between the Mewata Ball Park and the Stadium would be large enough for such a project and there would be no need for additional expense in dressing-room facilities, as these are already established at the stadium entrance. I feel therefore that serious consideration should be given to the construction of such a rink.

Three large areas were operated by the department as in former years, thus giving service to the commercial teams, and specially organized groups. The cost of operating these areas will never be met from the fees charged, but it constitutes a definite service to the citizens of Calgary.

#### C.C.R.A.:

The Calgary Community Recreation Association are still conducting a very extensive recreational program, although handicapped by a lack of suitable buildings. Several of the communities have requested City Council to consider plans whereby a policy for financing the construction of large community centres may be undertaken, thus enabling the groups to carry out a more effective year-round program for all ages.

#### FASTBALL:

The 1952 season was very successful as the weather man provided a long dry season, although the younger set were handicapped due to the polio ban, the junior, intermediate and senior groups enjoyed a satisfactory year with one of the senior city league teams entering the inter-

national softball tournament at Plain View, Texas. The Community leagues organized six divisions, including four for boys and two for girls. Twenty-nine teams competed in 250 league games. With the co-operation of the Calgary Public School Board, it was possible to place seventeen diamonds at the disposal of these leagues, nine of them were school grounds, and eight were community park areas. To enable all the city clubs to practice and play during 1952, there were a total of thirty-one city owned diamonds and seventeen school grounds used for softball purposes.

#### BASEBALL:

For the past few years, baseball has had very little support in Calgary. Two teams played in the inter-city league with Edmonton, as a semi-professional group, but amateur teams were given very little support. The sandlot league has ceased to operate, and only the occasional game of baseball is played on city park areas.

#### GOLF:

The demand for another golf course is becoming more pressing. All the private club courses are crowded to capacity, and provisions will have to be made in the very near future to serve the 30,000 people living north of the Bow River.

#### SQUARE DANCING:

Square dancing is becoming a more popular pastime, and several communities are now conducting weekly or bi-weekly sessions. Further interest is being developed by the instructions being given in our recreation centres, to the junior high school groups.

#### BAND CONCERTS:

Band concerts have been a part of the passive recreational program in Calgary for nearly forty years. Records show that in the year 1913 thirty-six band programs were rendered during the months of June, July and August. At a cost of \$4,000.00 for the season, these programs were frequently held in two or three locations at the same time.

By the year 1915, five open air band stands had been built to provide seating accommodation for the musical groups performing such concerts, in Tuxedo Park, St. George's Island, Central Park, Mowata Park and Bowness Park. The citizens showed their appreciation and interest, as records show 1,000 to 2,000 persons attending such programs. During the past thirty-five years, the bandstands have either been dismantled or converted to other uses, and at the present time there is only one raised platform, without a sheltering roof, on which concerts are played.

As a result, the contrast is shown in the number of concerts performed during the season of 1952, when only three park band concerts were held, two of which were played by the band of the Calgary Musicians Protective Association, and one by the Calgary Citadel Salvation Army Band, all being rendered on the platform at the west end of St. George's Island.

Although a goodly number of persons attended, it was impossible to take a count as the maximum seating accommodation was 100, and the crowd desiring to listen would not stand for long periods, and consequently changed every fifteen to twenty minutes as the program proceeded. Only the persons having a very keen interest in band music would be willing to stand for a two-hour period to enjoy the entire concert performance.

The following quotation is taken from the report of the Parks

Department Superintendent of the year 1915:

"It is an unquestionable fact that no money spent by this department is better appreciated than that spent on Band Concerts. This is evidenced by the attendance."

With this quotation I would heartily agree. In past years many persons have been drawn into city park areas to enjoy happy hours of relaxation, and the musical renderings of the bands which have performed in Calgary.

I would therefore respectfully suggest that at least two areas be developed at which some three or four hundred seats could be placed, a suitable stand or platform erected, and electric lighting installed, thus enabling the public to enjoy the programs during the beautiful summer evenings as well as on Sunday afternoons. As bands in Calgary are becoming more proficient, it is desirable that an opportunity be given these local musicians to present programs of living music, and thereby encourage the continued interest and study of these arts.

The two local bands previously mentioned have endeavored to keep the interest of the players at a high level by performing concerts without fee at local hospitals and institutions. The Calgary Musicians Protective Association performed two concerts at Keith Sanatorium, one at the Colonel Belcher Hospital, and one at the Junior Red Cross Hospital. The Salvation Army Citadel Band performed ten outdoor summer concerts and five indoor winter programs at the following institutions: Calgary General Hospital, Holy Cross Hospital, Scottish Nursing Home, Colonel Belcher Hospital, Grace Hospital, Sunset Lodge, Junior Red Cross Hospital and Keith Sanatorium. This band also provided the music for the Memorial Service to His Late Majesty, King George VI, the two public decoration day services at the Cenotaph and at the Union Cemetery, the Annual Remembrance Day Service and the South African Memorial Day Service.

#### CALGARY HEALTH AND RECREATION CENTRAL COMMITTEE:

Under the provision of the National Physical Fitness Act, this committee are responsible for the conduct of recreation classes in this City, and also for the provision of a leader corps, the personnel of which are certificated, under the Provincial Department of Education, to carry out the program in these centres. Your Director holds the position of chairman on this committee, and Mr. J. R. Houghton, Assistant Director, is the Secretary-treasurer.

During 1952, forty-five classes were conducted under the National Physical Fitness Act, by twenty-eight trained leaders, and persons were screened and recommended to take the 1952 training course held at Red Deer, Alberta, between July 4th and August 4th.

#### PUBLIC RELATIONS:

Your Director is continually being called upon to assist in the organization of new community groups, 16 evening meetings being attended in an advisory capacity on matters pertaining to recreation. Also, during the past year, we assisted in the organization of three new community clubs, and were instrumental in linking two groups into one new association. Mr. J. R. Houghton, the Assistant Director, has acted as a member of a discussion panel which has met with home and school groups to discuss recreational activities throughout the city.

The service rendered to the public as a result of the appointment of a full-time stenographer has speeded up the issuance of permits for the use of hockey rinks, ball diamonds and the recording of such activities on all our recreational properties.

This office also acts as the central registry for all sport activities conducted by the Calgary Community Recreation Association, which requires signed contracts for all participants.

TOMORROW:

With the rapid growth of this city, planners will have to keep in mind the fact that more large recreation areas will be required. At the present time, the majority of the community park areas are being leased to the community clubs, and consequently additional areas are required to enable the department to meet the needs of commercial, church, industrial and city-wide organizations. More large areas, similar to Riley Park and St. George's Island, are also needed for family recreation and large picnics, and it is felt, therefore, that an early start should be made on the Shoultice area and the acreage in the Bow Bend, in East Calgary.

Preparations have been made for the development of a large practice area which should supply three playing fields for soccer clubs and rugby teams, and as this site is only two blocks from the City Transit route and approximately one mile west of the Louise Bridge, it will be in a splendid location to serve the main part of the city and the entire northwest district.

COURTESIES:

To the local press and radio stations we express our sincere appreciation. Without the splendid publicity which is given us by these organizations, the carrying out of our programs would be very difficult.

To all citizens who have given generously of their time to act as officials at the various athletic meets and games, we extend our heartfelt thanks. Only by such voluntary aid can a vast sports program be conducted.

To all Civic officials who have heartily co-operated with us in our endeavor to serve the citizens of Calgary and meet to some degree the recreational needs of the people, we express a sincere thankyou.

To the employees of the department who have faithfully carried out the duties allotted to them and thus made possible this important phase of civic service, we extend our deepest appreciation.

Respectfully submitted,

Wm. Garnett,  
DIRECTOR OF SPORTS AND RECREATION.

Participation record, Cont'd.

	<u>N. W. Centre Participation</u>	<u>S.W. Centre Participation</u>	<u>Total</u>
Arts and crafts	-	54	54
Leathercraft	204	-	204
Handicraft	-	44	44
Table Tennis	126	-	126
Paddle Tennis	25	-	25
Play-school	145	-	145
Tap-dancing, ages 6-9,	71	-	71
Model building	3	-	3
Camera Club	-	4	4
Film	-	65	65
Sewing class	151	2	153
High & Dry, Red Cross Swimming,	37	-	37
Pingminton	7	-	7
Badminton Club	-	10	10
Music	53	-	53
Orchestra, Record Listening	173	-	173
Group games	1,655	-	1,655
Group Dancing	255	862	1,117
Spectators	112	66	178
Hay rides	-	27	27
Box Social	-	27	27
Gymnastics	-	593	593
<b>Total:</b>	<b>7,748</b>	<b>2,990</b>	<b>10,738</b>

The total attendance during 1952 at the recreation centres was 9,312.

\*\*\*\*\*

SUPERVISED PLAYGROUNDS:

The following is a statistical report showing participation in the various activities conducted in the supervised playgrounds during the 1952 season:

Fastball	5,036
Basketball	7,535
Volleyball	2,106
Touch Football	2,113
Paddle Tennis	1,308
Table Tennis	9
Lawn Tennis	192
Play Apparatus	7,091
Athletics	1,060
Gymnastics	966
Group games	5,627
Paddling	1,893
Swimming	608
Swimming Instructions	116
Handicrafts	8,294
Music	271
Dancing	75
Drama	1,558
Hiking	284
Picnics	143
Educational Tours	368
Sundry classes	2,929
<hr/>	
Total participation:	49,582

The total attendance for the season at the supervised playgrounds was 33,980.

RECREATION CENTRES:

Below is a report on participation at the northwest district recreation centre for the months January to April, 1952, and November and December, 1952; statistics for the southwest centre are for the months October, November and December, 1952, only.

	<u>N. W. Centre</u>	<u>S. W. Centre</u>	<u>Total</u>
	<u>Participation</u>	<u>Participation</u>	
Pre-school skating	117	-	117
Beginners skating	105	-	105
Figure Skating	130	64	194
Skating games, boys, girls	82	-	82
Free Skating	167	135	302
Hockey	70	-	70
Boxing, boys 10-14,	262	-	262
Wrestling	87	37	124
Drama, ages 10-14,	249	-	249
Tap-dancing, 10-14,	412	-	412
Keep-fit, Ladies'	247	109	356
Girls' Basketball	350	169	519
Boys' Basketball	496	337	833
Girls' Tumbling	638	-	638
Boys' Tumbling	773	197	970
Girls' Volleyball	92	155	247
Boys' Volleyball	94	6	100
Crafts, Ladies'	360	27	387

(Cont'd.)

MAJOR PLAYGROUNDS CONTAINING A MINIMUM OF  
SIX PIECES OF APPARATUS

1.	Bankview Playground	23rd Ave. & 17th St. W.,
2.	Booth Memorial	17th Ave. & 29th St. W.,
3.	British American Playground	9th Ave. & 20th St. E.,
4.	Central Rotary	16th Ave. & 11th St. W.,
5.	Centre St. Playground	17th Ave. & Centre St. South,
6.	Crescent Park	11th Ave. & 3rd St. N. W.,
7.	Inglewood Playground	22nd Ave. & 16A St. S. E.,
8.	Killarney Park	21st Ave. & 26th St. W.,
9.	Mewata Park	5th Ave. & 11th St. W.,
10.	Mt. Pleasant Rotary	6th Ave. & 1st St. N. E.,
11.	Mountview Playground	18th Ave. & 4th St. N. E.,
12.	Ogden Park	74th Ave. & 24th St. S. E.,
13.	Regal Terrace	8th Ave. & 6th St. N. E.,
14.	Riley Park	6th Ave. & 12th St. N. W.,
15.	South Calgary Rec. Ground	30th Ave. & 16th St. S. W.,
16.	St. George's Island	9th Ave. & 11th St. E.,
17.	Tuxedo Park	29th Ave. & 1st St. N. E.,
18.	Victoria Rotary	12th Ave. & 6th St. E.,
19.	West Mount Pleasant	22nd Ave. & 5th St. N. W.,

MINOR PLAYGROUNDS CONTAINING FROM THREE TO FIVE  
PIECES OF APPARATUS

1.	Belfast	17th St. N. E.,
2.	Bowview Playground	8th Ave. & 17th St. N. W.,
3.	Bridgeland Extension	Child Ave. & Edward St.,
4.	Bridgeland Playground	4th Ave. & 9A St. N. E.,
5.	Capitol Hill Park	20th Ave. & 15th St. N. W.,
6.	Central Community	16th Ave. & 8th St. W.,
7.	Chinese Mission Playground	1st Ave. & Centre St. S.,
8.	City Hall Playground	8th Ave. & 3rd St. E.,
9.	East Calgary Rotary	9th Ave. & 16th St. E.,
10.	Elbow Park Playground	39th Ave. & 4A St. S. W.,
11.	Elbow Swimming Pool	30th Ave. & Elbow Drive,
12.	Elboya	Park Ave. & 4th St. W.,
13.	Grandview Rec. Grounds	Burns Ave. & Alexander St.,
14.	Grand Trunk	6th Ave. & 23rd St. N. W.,
15.	Jenkins' Groceteria	14th Ave. & 14 St. E.,
16.	King George Playground	22nd Ave. & 9A St. N. W.,
17.	King, Sheriff, Home	9th Ave. & 7A St. N. W.,
18.	Lower Sunalta	11th Ave. & 16th St. W.,
19.	Millican Playground	66th Ave. & 19th St. S. E.,
20.	Mission Playground	24th Ave. & 2nd St. S. W.,
21.	National Playground	11th Ave. & 11th St. E.,
22.	North Balmoral	36th Ave. & 2nd St. N. W.,
23.	Parkhill Athletic Grounds	38A Ave. & 1A St. S. W.,
24.	Renfrew	8th Ave. & 7th St. N. E.,
25.	Rosedale	11th Ave. & 9th St. N. W.,
26.	Rosevale	34th Ave. & 7th St. S. W.,
27.	Roxboro	30th Ave. & 1st St. W.,
28.	Sunnyside School	1st Ave. & 7th St. N. W.,
29.	Sunnyside Playground	Boulevard & 9A St. N. W.,
30.	Union Milk Playground	5th Ave. & 1st St. E.,
31.	Victoria Playground	15th Ave. & 3rd St. E.,
32.	West Calgary,	14th Ave. & 25A St. W.,
33.	West Hillhurst	2nd Ave. & 21st St. N. W.,
34.	Westmount Playground	Broadview Road & 16th St. N. W.,
35.	Winston Heights	27th Ave. & 4th St. N. E.,

RECREATIONAL SITES DEVELOPED, OR IN PROCESS OF DEVELOPMENT,  
WITH SOCCER, RUGBY, OR BASEBALL FACILITIES.

1.	Bankview	23rd Ave. & 17th St. W.,
2.	Bowview Rec. Grounds	6th Ave. & 19th St. N. W.,
3.	Bridgeland Rec. Grounds	Blvd. & 9th St. N. E.,
4.	Capitol Hill Park	20th Ave. & 14th St. N. W.,
5.	Crescent Ladies' Ball Park	9th Ave. & 2nd St. N. W.,
6.	Earl Grey	Dorchester Ave. & 8th St. W.,
7.	Elbow Park School	38th Ave. & 7th St. W.,
8.	Glengarry	17th Ave. & 29th St. W.,
9.	Grandview Red. Grounds	Burns Ave. & Ramsay St.,
10.	Harvetta Heights,	Valleyfield
11.	Hillhurst Athletic Park	5th Ave. & 12th St. N. W.,
12.	Killarney Park	21st Ave. & 26th St. W.,
13.	King George	22nd Ave. & 9A St. N. W.,
14.	Manchester Rec. Grounds	57th Ave. & 1st St. S. W.,
15.	Mewata Park	5th Ave. & 11th St. W.,
16.	Mountview Rec. Grounds	18th Ave. & 4th St. N. E.,
17.	Mountview Home	16th Ave. & 5th St. N. E.,
18.	Mt. Pleasant Rotary	6th Ave. & 1st St. N. E.,
19.	Municipal Baseball Park	14th Ave. & 6th St. N. E.,
20.	Ogden Rec. Grounds	74th Ave. & 22nd St. S. E.,
21.	Parkdale	6th Ave. & 27th St. N. W.,
22.	Parkhill Rec. Grounds	38A Ave. & 1A St. S. W.,
23.	Regal Terrace	7th Ave. & 6th St. N. E.,
24.	Richmond Park	26th Ave. & 28th St. S. W.,
25.	Riley Park	6th Ave. & 12th St. N. W.,
26.	Rosedale	13th Ave. & 9th St. N. W.,
27.	Rosevale Park	32nd Ave. & 8th St. W.,
28.	St. George's Island	9th Ave. & 11th St. E.,
29.	South Calgary Park	32nd Ave. & 16th St. S. W.,
30.	Tuxedo Park	30th Ave. & 1st St. N. E.,
31.	Victoria Rotary	12th Ave. & 6th St. E.,
32.	West Mt. Pleasant Rec. Grounds	22nd Ave. & 5th St. N. W.,
33.	Windsor Park	52nd Ave. & 6th St. S. W.,
34.	Winston Heights,	27th Ave. & 4th St. N. E.,

HOCKEY AREAS

1.	Bankview	23rd Ave. & 17th St. W.,
2.	Bowview	6th Ave. & 19th St. N. W.,
3.	Boys' Town	8th Ave. & 5th St. E.,
4.	Brewery	9th Ave. & 14th St. E.,
5.	B.R.A.A.	Riverside Blvd.,
6.	Capitol Hill	21st Ave. & 15th St. N. W.,
7.	Crescent Park	11th Ave. & 2nd St. N. W.,
8.	Elboya	Park Ave. & 4th St. W.,
9.	Glengarry School	17th Ave. & 29th St. W.,
10.	Harvetta Heights	Valleyfield, 47th Ave. & 22nd St. S. E.,
11.	Hillhurst Park	Hillhurst Park
13.	" "	" "
14.	Inglewood Community	28th Ave. & 17A St. E.,
15.	Inglewood Recreation	24th Ave. & 17th St. E.,
16.	King George	22nd Ave. & 9th St. N. W.,
17.	Knob Hill	Richmond Road, & 24th St. W.,
18.	Lower Sunalta	11th Ave. & 16 St. W.,
19.	Manchester	56th Ave. & 1A St. S. W.,
20.	Mewata Stadium	Mewata Stadium
21.	" "	" "
22.	" "	" "
23.	Mewata Compound	6th Ave. & 11th St. W.,
24.	Millican	62 Ave. & 19th St. S. E.,
25.	Mills Estate	17th Ave. & 8th St. E.,
26.	Mission	25th Ave. & 2nd St. W.,



27.	Mountview	18th Ave. & 4th St. N. E.,
28.	"	" "
29.	Ogden	Ogden
30.	Parkview	26th Ave. & 3rd St. E.,
31.	Renfrew	8th Ave. & 6th St. N. E.,
32.	Richmond Park	26th Ave. & 28th St. W.,
33.	Riverdale Ave.,	Riverdale Ave. (Extreme W. End.)
34.	Rosevale	34th Ave. & 8th St. W.,
35.	Rosedale	10th Ave. & 9th St. N. W.,
36.	Rotary Park	6th Ave. & 1st St. N. E.,
37.	" "	" "
38.	Roxboro	30th Ave. & 1st St. W.,
39.	Scarboro	Scarboro Ave. & Stockton St.,
40.	South Calgary	30th Ave. & 14th St. W.,
41.	South Mount Royal	Prospect Ave. & 10th St. W.,
42.	" " "	" "
43.	South Ogden	82nd Ave. & 24th St. S. E.,
44.	Sunnyside School	2nd Ave. & 7th St. N. W.,
45.	Technical School	13th Ave. & 11th St. N. W.,
46.	Victoria Community	12th Ave. & 6th St. E.,
47.	Windsor Park	54th Ave. & 2nd St. S. W.,
48.	West Mount Pleasant	23 Ave. & 5th St. N. W.,
49.	Winston Heights	27th Ave. & 4th St. N. E.,

PLEASURE SKATING AREAS

1.	Bankview	23rd Ave. & 17th St. W.,
2.	Belfast	18A St. N. E.,
3.	Bonnybrook	Ogden Road, & 36th St. S. E.,
4.	Booth Memorial	15th Ave. & 29th St. W.,
5.	Bowview	6th Ave. & 19th St. N. W.,
6.	Briar Hill	12th Ave. & 20A St. N. W.,
7.	B.R.A.A.	Riverside Blvd.,
8.	Bridgeland	4th Ave. & 9A St. N. E.,
9.	Broadview Recreation	Broadview Rd. & 19th St. N. W.,
11.	Broadview Road	16th St. N. W.,
12.	Capitol Hill	21st Ave. & 15th St. N. W.,
13.	Central Rotary	16th Ave. & 11th St. W.,
14.	Central Community	16th Ave. & 8th St. W.,
15.	Chinese	1st Ave. & Centre St.,
16.	Crescent Park	11th Ave. & 2nd St. N. W.,
17.	Elbow Park	39th Ave. & 4A St. S. W.,
18.	Elboya	Park Ave. & 4th St. W.,
19.	Erlton	34th Ave. & Erlton Road,
20.	Glengarry School	17th Ave. & 29th St. W.,
21.	Grand Trunk	6th Ave. & 23rd St. N. W.,
22.	Grandview	Ramsay St. & Burns Ave.,
23.	Harvett Heights	Valleyfield,
24.	Hillhurst Park	Hillhurst,
25.	Hounsfield Heights	14th Ave. & 15th St. N. W.,
26.	Jefferies	11th Ave. & 10th St. E.,
27.	Jewish Community	17th Ave. & Centre St. S.,
28.	Killarney Park	21st Ave. & 25th St. S. W.,
29.	Knob Hill	Richmond Road & 24th St. W.
30.	Lower Sunalta	11th Ave. & 16th St. W.,
31.	Manchester	56th Ave. & 1A St. S. W.,
32.	Mission	25th Ave. & 2nd St. W.,
33.	Mountview Home	16th Ave. & 5th St. N. E.,
34.	Mountview Playground	18th Ave. & 4th St. N. E.,
35.	Mountview, Speed Skating Area	" "
36.	National	11th Ave. & 11th St. E.,
37.	North Balmoral	36th Ave. & 2nd St. N. W.,
38.	Parkdale	6th Ave. & 27th St. N. W.,
39.	Parkhill	38A Ave. & 1A St. S. W.,

40.	Pleasant Heights	29th Ave. & 5th St. N. W.,
41.	Ree Heights School	Ree Heights
42.	Renfrew	8th Ave. & 6th St. N. E.,
43.	Richmond Park	26th Ave. & 28th St. W.,
44.	Rosedale Skating Rink	10th Ave. & 9th St. N. W.,
45.	Rosevale	34th Ave. & 8th St. W.,
46.	Rotary	6th Ave. & 1st St. N. E.,
47.	Roxboro	30th Ave. & 1st St. W.,
48.	St. Monica	St. Monica & 14th St. E.,
49.	7th Day Adventist	16th Ave. & 1st St. N. E.,
50.	Scarboro	Scarboro Ave. & Stockton St.,
51.	St. Anne's School	22nd Ave. & 9th St. E.,
52.	Sunnyside	2nd Ave. & 4th St. N. W.,
53.	Sunnyside School	2nd Ave. & 6th St. N. W.,
54.	South Calgary	30th Ave. & 14th St. W.,
55.	South Elboya	46th Ave. & 4A St. S. W.,
56.	Tuxedo	30th Ave. & 1st St. N. E.,
57.	Upper Hillhurst	2nd Ave. & 21st St. N. W.,
58.	Victoria Community Playground	17th Ave. & 3rd St. E.,
59.	Victoria Community	12th Ave. & 6th St. E.,
60.	West Mt. Pleasant	23rd Ave. & 5th St. N. W.,
61.	West Parkdale	5th Ave. & 34 St. N. W.,
62.	Windsor Park	54 Ave. & 2nd St. S. W.,
63.	Winston Heights	27th Ave. & 4 St. N. E.,
64.	14th Ave. & 5th St. N. E.,	14th Ave. & 5th St. N. E.,
65.	22nd Ave. & 22nd St. W.,	22nd Ave. & 22nd St. W.,
66.	14th Ave. & 25A St. W.,	14th Ave. & 25A St. W.,

\*\*\*\*\*

PRESENT PARK AND PLAYGROUND ACREAGE

SECTION: 1.

Park - 42 Ave. & 16 St. E.,	3.20 acres
Park - 46 Ave. & 22 St. E.,	3.20 "
Playground - Bonnybrook Road & 38 St. E.,	.55 "
<hr/>	
Playground Total: .55 acres	Parks Total: 6.40 acres.
6.95 " Total	

SECTION: 3.

Park - 38 Ave. & 3 St. W.,	2.44 acres
Playground - 38A Ave. & Stanley Road	6.88
Playground - 4 St. to 1A St. & Elbow River	6.88
<hr/>	
Playground Total: 13.76 acres,	Parks Total: 2.44 acres.
16.20 " Total	

SECTION: 4.

Park - 14 St. to Elbow River & 50 to 38 Ave. S. W.,	20.00 acres
Park - 34 Ave. & 4 St. S. W.,	6.88
Park - Riverdale Ave. from 4th to Elboya Bridge	1.59
Park - West of Elboya Bridge on Riverdale Ave.	.46
Park - Landsdown Ave. & 5A St. S. W.,	.11
Park - Landsdowne Ave. & Elbow Drive	4.14
Park - 46 Ave. & 5th St. S. W.,	1.14
Park - 6th St. to 50th Ave., along Britannia Drive	13.78
Park - Fairholme Crescent & Cambrian Ave.,	.11
Park - Britannia Drive	.68
Playground - Viking Ave. & Colman Ave.,	2.06
Playground - Elbow River & 50th Ave. S. W.,	11.48
Playground - 42 Ave. & Landsdown Ave.,	11.48
Playground - 47 Ave. & 5 St. S. W.,	2.97
Playground - Landsdowne Ave. & 4th St. S. W.,	4.89
Playground - 38 Ave. & 4A St. S. W.,	.23
Playground - 36 Ave. & 13 St. S. W.,	1.22
<hr/>	
Playground Total: 24.33 acres,	Parks Total: 47.89 acres.
72.22 " Total	

SECTION: 5.

Park - 42 Ave. & 15 St. S. W.,	1.71 acres
Park - Glenmore Ave. & 15 St. S. W.,	2.55
Playground - 45 Ave. & 16 St. S. W.,	3.44
Playground - 46 Ave. & 17 St. S. W.,	1.82
Playground - 38 Ave. & 16 St. S. W.,	1.06
<hr/>	
Playground Total: 6.32 acres,	Parks Total: 8.44 acres.
14.76 " Total	

SECTION: 7.

Park - Hampton Crescent & Sarcee Road	1.22 acres
Park - Kerrydale Road & Kerry Park Road	.262
Park - 30 Ave. S. W. & Kildare Crescent	.529
Park - 26 Ave. S. W. & 30 to 31 St. S. W.,	5.34
Park - 21 Ave. S. W., & 26 to 25A St. S. W.,	2.98

(Cont'd.)

(Section 7, Cont'd.)

Playground - 21 Ave. S. W. & 26 to 25A St. S. W.,	.23 acres
Playground - 17 Ave. S. W. & 30 to 29 St. S. W.,	2.076
Playground - 26 Ave. S. W., & 28 to 26A St. S. W.,	6.93

---

Playground Total: 9.236 acres, Parks Total: 10.331 acres. 19.567 " Total.

---

SECTION: 8

Park - 22nd Ave. & Richmond Road, S. W.,	4.15 acres
Park - 26 Ave. & 20 St. S. W.,	.51
Park - 32 Ave. & 14 St. S. W.,	5.52
Playground - 32 Ave. & 15 St. S. W.,	8.61
Playground - 30 Ave. & 22 St. S. W.,	.24
Playground - Richmond Road and 24 St. S. W.,	2.12
Playground - 25 Ave. & 20 St. N. W.,	1.01
Playground - 23 Ave. & 17 St. S. W.,	1.71
Playground - 22 Ave. & 20 St. S. W.,	.25
Playground - 20 Ave. & 18A St. S. W.,	.27

---

Playground Total: 14.21 acres, Parks Total: 10.18 acres. 24.39 " Total.

---

SECTION: 9

Park - Quebec Ave. & Wolfe St. S. W.,	2.80
Park - Falcon Cave & Carleton St. S. W.,	.91
Park - Levis Ave. & Council Way, S. W.,	.34
Park - Cartier St. & Premier Way, S. W.,	6.23
Park - Premier Way & 8 St. S. W.,	7.81
Park - Dorchester Ave. & 8 St. S. W.,	6.43
Park - Elbow Drive, from 34 to 30 Ave. S. W.,	2.64
Park - Elbow Drive & 5 St. S. W.,	3.46
Park - 24 Ave. & 5 St. S. W.,	2.40
Park - Hillcrest Ave. & 5A St. S. W.,	3.78
Park - Dorchester Ave. & 6 St. S. W.,	1.83
Park - Elbow Drive and Park Land	.23
Playground - 34 Ave. between 7 and 8A St. S. W.,	8.04
Playground - Elbow Drive & 30 Ave. S. W.,	.99
Playground - Dorchester Ave. & 8 St. S. W.,	8.27
Playground - Prospect Ave. & 10 St. S. W.,	1.27

---

Playground Total: 18.57, Parks Total: 38.86 acres. 57.43 " Total.

---

SECTION: 10

Park - 33 Ave. & Mission Road	4.14 acres
Park - Mission Road and Roxboro Glen Road	4.60
Park - 26 Ave. & 2 St. E.,	5.97
Playground - Roxboro Glen Road and 1 St. W.,	.99
Playground - 24 Ave. & 2 St. W.,	.88
Playground - 26 Ave. & 2A St. E.,	.27
Playground - Union Cemetery & 2 St. E.,	1.78
Playground - 34 Ave. & Centre St.,	1.37

---

Playground Total: 5.29 acres, Parks Total: 14.71. 20.00 " Total.

---

SECTION: 11

Playground - Burns Ave. & Alexander St. E.,	3.68 " Total.
---	---------------

---

SECTION: 12.

Park - 24 Ave. & 17 St. E.,	4.11 acres
Playground - 22 Ave. & 21 St. E.,	1.92
Playground - 28 Ave. & 17A St. E.,	.88
<hr/>	
Playground Total: 2.80 acres, Parks Total: 4.11 acres.	6.91 " Total.

SECTION: 13.

Park - 17 Ave. & 17A St. E.,	58.76
Park - Riverside Blvd. & 15 St. E.,	5.52
<hr/>	
Parks Total: 64.28.	64.28 " Total

SECTION: 14.

Park - 17 Ave. & 9 Ave. E.,	.23
Park - Riverside Blvd. from 6 St. to 15 St. E.,	45.95
Park - St. George's Island	39.49
Playground - St. George's Island	6.43
Playground - Riverside Blvd. & 8A St. E.,	27.54
Playground - 12 Ave. E. & Elbow River	2.40
Playground - 17 Ave. & 8 St. E.,	.34
Playground - 11 Ave. & 10 St. E.,	.91
Playground - 10 Ave. & 11 St. E.,	.24
Playground - St. Monica Ave. & 14 St. E.,	.28
Playground - 9 Ave. & 14 St. E.,	.27
Playground - 10 Ave. & 14 St. E.,	1.43
<hr/>	
Playground Total: 39.84 acres, Parks Total: 85.67,	125.51 " Total

SECTION: 15.

Park - 13 Ave. & 2 St. W.,	2.91
Playground - 15 Ave. & Centre St.,	.57
Playground - 17 Ave. & 3 St. E.,	.25
Playground - 15 Ave. & 3 St. E.,	.32
Playground - 8 Ave. between 5 & 6 St. E.,	.30
Playground - 8 Ave. & 3 St. E.,	.29
Playground - 5 Ave. & 1 St. W.,	.32
Playground - 1 Ave. & Centre St.,	.23
<hr/>	
Playground Total: 2.28 acres, Parks Total: 2.91 acres.	5.19 " Total

SECTION: 16.

Park - Sunnyside Blvd. to Louise Bridge	.36
Park - Westmount Blvd. & Louise Bridge	.18
Park - Westmount Blvd. from 10A St. to 14 St. N. W.,	7.81
Park - Louise Bridge & 4th Ave. W.,	.68
Park - 14th Ave. & 11th St. W.,	.59
Park - 17th Ave. between 7th & 8th St. W.,	.68
Playground - 16th Ave. & 12th St. W.,	1.48
Playground - 16th Ave. between 8th & 9th St. W.,	.26
<hr/>	
Playground Total: 1.74 acres, Parks Total: 10.30 acres.	12.04 " Total

SECTION: 17.

Park - 17th Ave. S. W. & 22nd St. S. W.,	8.27	acres
Park - Scarboro Ave. & Scotland St. S. W.,	2.95	
Park - Sunderland Ave. & Senlac St. S. W.,	1.03	
Park - Sunderland Ave. & Superior Ave. S. W.,	.32	
Park - Superior Ave. & Shelbourne St. S. W.,	.25	
Park - Sudbury Ave. S. W.,	1.03	
Park - Sudbury Ave. & Sharon Ave. S. W.,	.53	
Park - Sudbury Ave. & 17th St. S. W.,	.14	
Park - 14 Ave. & 16 St. S. W.,	1.92	
Park - 16 Ave. & 16th St. S. W.,	.66	
Playground - 11th Ave. & Stockton St. S. W.,	2.43	
Playground - 10th Ave. & 16th St. S. W.,	1.29	
Playground - Westmount Blvd. & 19th St. N. W.,	3.10	
Playground - Westmount Blvd. & 20th St. N. W.,	3.27	
Playground - Westmount Blvd. & 21st St. N. W.,	3.18	
Playground - Westmount Blvd. & 22nd St. N. W.,	4.04	
Playground - Broadview Road and 16th St. N. W.,	.26	
<hr/>		
Playground Total: 17.57 acres, Parks Total: 17.09 acres.	34.66	" Total

SECTION: 18.

Park - 12th Ave. S. W. & 24th to 25th St. S. W.,	1.64	"
Park - 8th Ave. & 33rd St. S. W.,	2.29	
Park - 6th Ave. & 29th St. to 32nd St. S. W.,	11.24	
Playground - 12th Ave. & 24th to 25th St. S. W.,	2.06	
<hr/>		
Playground Total: 2.06 acres, Parks Total: 15.17 acres.	17.23	" Total

SECTION: 19.

Park - 2nd Ave. N. W., & 26th St. N. W.,	.19	"
Park - 16th Ave. & 27th St. N. W.,	3.47	
Playground - 6th Ave. & 28th St. N. W.,	5.11	
<hr/>		
Playground Total: 5.11 acres, Parks Total: 3.66 acres,	8.77	" Total

SECTION: 20.

Park - 13th Ave. & 16th St. N. W.,	3.81	"
Park - 14th Ave. & 17A St. N. W.,	2.75	
Playground - 8th Ave. & 17A St. N. W.,	.78	
Playground - 12 Ave. & 20A St. N. W.,	1.84	
Playground - 6th Ave. & 19th St. N. W.,	8.29	
Playground - 2nd Ave. & 21st St. N. W.,	.26	
<hr/>		
Playground Total: 11.17 acres, Parks Total: 6.56 acres.	17.73	" Total

SECTION: 21.

Park Strip - 16th Ave. & 10th to 14th St. N. W.,	4.83	"
West Park Strip - 10th St. from 16th Ave. to 8th Ave. N. W.,	8.28	
East Park Strip - 10th St. from 16th Ave. to 8th Ave. N. W.,	13.08	
Park Strip - 9A St. to 4th St. N. W., Sunnyside Blvd.,	6.19	
Park Strip - 9A St. to 4th St. N. W., Crescent Road,	33.99	

(Cont'd.)

(Section 21, Cont'd.)

Park - 5th Ave. & 14th St. N. W.,	.71	acres
Park - 5th Ave. & 10th St. N. W.,	15.10	
Park - Gladstone Road & 13th St. N. W.,	.20	
Playground - 5th Ave. & 14th St. N. W.,	15.15	
Playground - 5th Ave. & 10th St. N. W.,	5.15	
Playground - 3rd Ave. & 5A St. N. W.,	.55	
Playground - 11th Ave. & 7th St. N. W.,	2.47	
Playground - Sunnyside Blvd. & 9A St. N. W.,	.51	
- Prince's Island Park	40.18	
<hr/>		
Playground Total: 23.83, Parks Total: 122.86 acres	146.69	" Total

SECTION: 22.

Park - Langevin Bridge to Centre St. Bridge	5.97	"
Park - 4th St. to 2nd St., along Sunnyside Blvd.,	2.73	
Park - 2nd St. to Centre St., hillside park,	6.42	
Park - 3rd St. to Centre St., on 7th Ave. N. W.,	4.60	
Park - 7th Ave. to 2nd Ave. on Centre St.,	14.69	
Park - 12th Ave. to 8th Ave., on 2nd St. W.,	19.73	
Park - 3rd Ave. & Crescent Road	.46	
Park - 4th Ave. & Crescent Road,	2.75	
Park - at four corners of intersection, 15th Ave. N. E.,	.44	
Playground - 11th Ave. & 2nd St. W.,	5.52	
Playground - 6th Ave. & 1st St. E.,	5.52	
Playground - 8th Ave. & 6th St. E.,	2.19	
Playground - 14th Ave. & 5th St. E.,	1.37	
<hr/>		
Playground Total: 14.66 acres, Parks Total: 57.79 acres.	72.45	" Total

SECTION: 23.

Park - Rupert Road & Richland Road, N. E.,	1.14	"
Park - Reader Crescent & Remington Road, N. E.,	1.02	
Park - Edward St. & Cardell St. N. E.,	1.01	
Park - Archer Road, N. E.,	.46	
Park Strip - Bridge Crescent, N. E.,	1.92	
Playground - 4th Ave. & 9A St. N. E.,	.34	
Playground - Phair Ave. & 12A St. N. E.,	3.68	
Playground - Remington Road & 8th Ave. N. E.,	2.29	
Playground - Regal Crescent & Russet Road, N. E.,	.68	
Playground - Radnor Road & Russet Road N. E.,	10.57	
<hr/>		
Playground Total: 17.56 acres, Parks Total: 5.55 acres.	23.11	" Total

SECTION: 24.

Park - 10th Ave. & 17th St. N. E.,	1.78	"
Playground - 9th Ave. & 17th St. N. E.,	1.37	
<hr/>		
Playground Total: 1.37 acres, Parks Total: 1.78 acres.	3.15	" Total

SECTION: 25CS.

Park - 74th Ave. & 20th St. E.,	6.88 acres	
Park - 74th Ave. & 23rd St. E.,	2.97	
Parks Total: 9.85 acres.	9.85	" Total

SECTION: 26.

Park - Proposed Regaldale subdivision	2.08	"
Park - Proposed Regaldale subdivision	.34	
Playground - Proposed Regaldale Subdivision	2.40	
Playground Total: 2.40 acres, Park Total: 2.42 acres.	4.82	" Total

SECTION: 27.

Park - 16th Ave. & Edmonton Trail	4.48	"
Park - 30th Ave. & Centre St.,	4.94	
Park - 4 corners of intersection, 19th Ave. N. W.,	.44	
Playground - 16th Ave. & 4 St. N. E.,	2.75	
Playground - 30th Ave. & 2nd St. N. E.,	1.02	
Playground - 27th Ave. & 5th St. N. E.,	1.06	
Playground Total: 4.83, Parks Total: 5.86 acres.	10.69	" Total

SECTION: 28.

Park - 22nd Ave. & 6th St. N. W.,	3.00	"
Playground - 22nd Ave. & 5th St. N. W.,	1.37	
Playground - 23rd Ave. & 11th St. N. W.,	2.20	
Playground - 30th Ave. & 5th St. N. W.,	.98	
Playground Total: 4.55 acres, Parks Total: 3.00 acres.	7.55	" Total

SECTION: 29.

Park - Strip along Banff Highway, N. W.,	1.38	"
Park - Capitol Hill Crescent & Type St. N. W.,	.72	
Park - 20th Ave. N. W., & 14th St.,	2.52	
Playground - 20th Ave. N. W., & 14th St. N. W.,	.46	
Playground - 20th Ave. & 20th St. N. W.,	3.05	
Playground - 18th Ave. & 19th St. N. W.,	4.35	
Playground Total: 7.86 acres, Parks Total: 4.62 acres.	12.48	" Total

SECTION: 34.

Playground - 36th Ave. & 2nd St. N. W.,	1.18	" Total
---	------	---------

SECTION: 33 CS.

Park - 52nd Ave. & 5th St. W.,	1.49	"
Playground - 52nd Ave. & 6th St. W.,	1.49	
Playground Total: 1.49 acres, Parks Total: 1.49 acres,	2.98	" Total



SECTION: 34 CS.

Park - 53rd Ave. & 3rd St. W.,	.91 acres
Playground - 57th Ave. & 1A St. W.,	.29
Playground - 55th Ave. & 1A St. W.,	.59
<hr/>	
Playground Total: .88 acres, Parks Total: .91 acres.	1.79 " Total

---

---

SECTION: 36 CS.

Park - 66th Ave. & 23rd St. E.,	5.50 "
Playground - 66th Ave. & 19th St. E.,	4.14
Playground - 62nd Ave. & 18th St. E.,	.29
<hr/>	
Playground Total: 4.43 acres, Parks Total: 5.50 acres,	9.93 " Total

---

---

Total Acreage, City Playground areas:	263.55 acres,
Total Acreage, City Park areas:	570.63 acres,
<hr/>	
TOTAL, recreational areas,	834.18 acres.
<hr/> <hr/>	

STATEMENTS OF EXPENDITURES AND REVENUE

- 1952 -

SHAGANAPPI GOLF COURSE:

Appropriation:     \$ 23,500.00  
 Expenditure:       16,948.57  
 Revenue:            20,953.60 (including sale of beverages)

Maintenance:

Course:

Fairways, greens and tees	\$ 7,613.25	
Tools, equipment and repairs	1,105.45	
Water service maintenance	524.26	
Hauling supplies, etc.	305.70	
Holidays	930.50	
Maintenance of fence	283.34	
Starter	1,387.00	
Flower beds, mtce. & planting	182.75	
Mtce. Roads and paths	182.87	
Gasoline and oils	157.35	
Electric Power	282.69	
Lease, pumphouse	30.00	
Compensation	21.21	
Retroactive pay	<u>145.94</u>	13,152.31

Clubhouse:

Building	931.57	
Telephone	93.00	
Electric Light	250.37	
Gas Heating	221.32	
Stationery, tickets, etc.	378.32	
Supplies	510.88	
Mtce. Buildings	198.30	
Subscription, Golf Ass'n.,	12.50	
Steward	<u>1,200.00</u>	<u>3,796.26</u>

Total Expenditure:     \$ 16,948.57

Revenue:

Green Fees:

311 Junior @ .50	155.50	
193 Junior @ .75	144.75	
6,296 Senior @ .75	4,722.00	
7,065 Senior @ 1.00	<u>7,065.00</u>	12,087.25

Season Tickets:

Gents:

20 Half-season	220.00	
227 Full season	<u>4,535.00</u>	4,755.00

Ladies:

7 Half-season	56.00	
132 Full season	<u>1,980.00</u>	2,036.00

SHAGANAPPI GOLF COURSE, Cont'd.

Junior:

3 Half-season	12.00		
22 Full season	<u>165.00</u>	177.00	
Locker Rents:		<u>140.00</u>	19,195.25
Beer Sales:		4,752.67	
Empties:		291.88	
Less:			
Cost of Beer	3,176.20		
License	<u>110.00</u>		
			<u>1,758.35</u>
			<u>\$ 20,953.60</u>

\*\*\*\*\*

ST. GEORGE'S ISLAND ZOO:

Appropriation:	19,500.00
Expenditure:	25,129.65

Maintenance:

Caretaker	1,307.09	
Tools and repairs	155.22	
Water Service Maintenance	1,004.86	
Hauling	290.82	
Holidays	977.36	
Maintenance of fence	855.43	
Mtce. of buildings, (restrooms, etc.)	112.54	
Feeding & attending specimens	10,276.43	
Telephone	51.00	
Electric Light	533.46	
Water	1,513.35	
Gas heating	1,034.86	
Supplies	208.50	
Feed, medicine & disinfectants	5,232.71	
Retroactive pay	398.94	
Dyking and loaming	850.82	
New incinerator	220.01	
Maintenance, parking area	<u>107.25</u>	25,129.65

\*\*\*\*\*

STADIUM:

Appropriation:	10,500.00
Expenditure:	10,571.65

Operating and Maintenance:

Supervision	854.71	
Repairs and equipment	284.22	
Water service maintenance	1,531.41	
Maintenance, Field	3,024.77	
Hauling, supplies, loam, etc.,	632.21	
Holidays	265.85	
Watering	121.44	
Maintenance of fence	2,423.66	
Mtce. buildings, restrooms,	335.62	(Cont'd.)

Mewata Stadium, Cont'd.

Mtce. stands	552.29
Mtce. track	558.21
Mtce. practice grounds	222.67
Mtce. hurdles & goal posts	64.51
Telephone	90.00
Electric Light	877.22
Gas Heating	348.26
Supplies and stationery	35.52
Grass Seed	101.66
Re-wiring huts	52.47

Credits:

Cash, Electric Light	1,183.00	
Game permits	20.50	
Concession	601.55	
		<u>\$ 10,571.65</u>

\*\*\*\*\*

MEWATA BALL PARK:

Appropriation:	1,000.00
Expenditure:	572.53

Maintenance:

Supervision	122.10	
Upkeep	450.43	
		<u>\$ 572.53</u>

\*\*\*\*\*

HILLHURST PARK:

Appropriation:	\$ 5,500.00
Expenditure:	\$ 3,226.85

Maintenance:

Water service maintenance	50.33	
Hauling	25.43	
Mtce. grounds	317.50	
Fencing	2,785.47	
Holidays	48.12	
		<u>\$ 3,226.85</u>

\*\*\*\*\*

<u>TOTAL EXPENDITURE:</u>	MEWATA STADIUM,	
	HILLHURST ATHLETIC PARK,	
	MEWATA BALL PARK, .....	<u>\$ 14,371.03</u>

\*\*\*\*\*

MUNICIPAL SWIMMING POOL:

Appropriation:	\$ 12,000.00
Expenditure:	\$ 9,807.53

(Cont'd.)

MUNICIPAL SWIMMING POOL. Cont'd.

Operating and Maintenance:

Supervision	1,481.90	
Repair equipment	238.07	
Water service maintenance	421.49	
Mtce. grounds	66.03	
Holidays	129.85	
Mtce. building and pool	795.85	
Maintenance men	2,244.09	
Cashiers	368.25	
Life guards	981.00	
Locker attendants, boys	232.50	
"    "    girls	210.15	
Telephone	19.65	
Electric Light and power	260.22	
Water	485.99	
Gas heating	732.74	
Supplies	298.89	
Stationery and tickets	239.54	
Chemicals and disinfectants	257.63	
Laundry	29.15	
Swimming trunks and towels	304.54	
Boiler registration	<u>10.00</u>	
		\$ 9,807.53

\*\*\*\*\*

BOULEVARDS:

Appropriation:	\$ 12,000.00
Expenditures:	\$ 10,920.59

Maintenance:

New equipment & repairs	1,383.76	
Mtce. blvds.	630.29	
Hauling	1,696.26	
Holidays	467.98	
Heading back & pruning trees	2,424.17	
Removal of trees	890.33	
Planting trees and shrubs	1,985.58	
Renovating	679.69	
Tree stakes	72.40	
Retroactive pay	731.53	
Stationery and supplies	57.55	
Less Credits:	<u>98.95</u>	\$ 10,920.59

\*\*\*\*\*

UNION CEMETERY:

Supervision	2,846.53	
Repairs, tools & equipment	1,727.43	
Water service Mtce.	283.27	
Mtce. plots and watering	12,650.59	
Hauling	908.01	
Holidays	2,599.92	
Grave digging, loaming & seeding	2,782.67	
Roads and paths, mtcs.	1,538.79	
Mtce. borders	1,049.98	
Tamping & repair of sunken graves	1,035.62	
Planting and seeding	135.88	
		(Cont'd.)

Union Cemetery, Cont'd.

Making and placing markers	290.24
Foundations	80.44
Clerk	643.00
Telephone	75.00
Electric Light	27.34
Gas heating	102.30
Supplies and stationery	430.08
Gasoline and oils	119.04
Compensation	25.26
Grass Seed	166.65
Pruning	127.41
Lowering device and greens	349.68
Retroactive pay	706.00
Mtce. of roads	525.72
Federation affairs	19.90
Policing	261.00

Less Credits:

Int., Perp. Care		
Fund	2,205.00	
Disinters, Holiday		
& Late funerals	333.10	
Foundations	<u>717.80</u>	
		<u>\$ 28,251.85</u>

ROCK GARDEN, Union Cemetery.

Repair equipment	45.39
Water service mtce.	80.39
Mtce. grounds & watering	2,822.36
Hauling	29.28
Holidays	228.83
Planting	143.18
Pruning	87.48
Mtce. paths and roads	53.76
Cuttings	113.51
Collecting Seed	27.35
Mtce. & watering of borders	925.58
Planting	" 113.13
Pruning	" <u>20.06</u>

\$ 4,690.30

BURNSLAND CEMETERY:

Repairs, tools and equipment	585.22
Water Service mtce.	257.54
Mtce. plots and watering	9,536.61
Hauling	913.10
Holidays	117.11
Grave digging	4,175.76
Mtce. roads and paths	860.27
Mtce. borders	945.56
Tamping & repairing sunken graves	1,232.29
Planting and seeding	320.80
Foundations	193.08
Tree removals	297.50
Gasoline and oils	59.51
Retroactive pay	99.45
Pruning	1,149.79
Loaming	733.92

Less Credits:

Perp. Care Fund	7,050.00	
Foundations	<u>3.50</u>	
		<u>\$ 14,424.01</u>

QUEEN'S PARK CEMETERY:

Supervision	2,589.70
Repairs, tools & equipment	952.37
Water service mtce.	260.52
Mtce. plots and watering	4,823.97
Hauling	3,995.20
Holidays	1,524.47
Grave Digging	12,078.52
Mtce. paths and roads	933.09
Mtce. borders	1,446.20
Tamping & repair sunken graves	1,109.84
Planting and seeding	44.42
Lot markers	133.28
Foundations	998.56
Telephone	78.00
Electric Light	29.18
Retractive pay	535.31
Water	26.19
Gas heating	26.32
Supplies and stationery	351.92
Compensation	44.16
Gasoline and oils	28.69
Grass Seed	226.19
Development	7,116.40
Culvert	2,526.96
New hut	323.55
Water pipe	2,600.90
Greens	341.33

Less Credits:

Perp. Care Fund	3,760.00
Disinters, and Late funerals	206.96
Foundations	717.80

\$ 40,460.48

ST. MARY'S CEMETERY:

Repairs, tools & equipment	458.28
Water service mtce.	39.78
Mtce. plots, & watering	2,718.87
Hauling	307.61
Holidays	108.25
Grave digging	2,499.86
Mtce. paths and roads	333.10
Mtce. borders	305.44
Tamping & repair sunken graves	221.70
Planting and seeding	34.16
Lot markers	155.60
Water pipe	39.57
Loaming	1,338.06
Grass Seed	226.19

Less Credits:

Perp. Care Fund	840.00
Late funerals	10.00

\$ 7,936.47

CHINESE CEMETERY:

Repairs, tools and equipment	2.64
Water service mtce.	8.04
Mtce. plots and watering	866.78
Hauling	31.98
Grave Digging	411.65
Mtce. paths and roads	53.03

(Cont'd.)

Chinese Cemetery, Cont'd.

Mtce. borders	5.18
Tamping, repair of sunken graves	39.76
Lot markers	30.48
Grass Seed	17.73
Loaming	44.42
Holidays	21.07

Less Credits:

Perp. Care Fund	<u>201.54</u>	\$ 1,331.22
-----------------	---------------	-------------

ALL CEMETERIES, (Recap)

Appropriation:	\$ 74,461.17
Expenditures:	\$ 97,094.33

Expense Distribution:

Union Cemetery	\$ 28,251.85
Rock Garden (Union Cemetery)	4,690.30
Burnsland Cemetery	14,424.01
St. Mary's Cemetery	7,936.47
Queen's Park Cemetery	40,460.48
Chinese	<u>1,331.22</u>
	\$ 97,094.33

\*\*\*\*\*

NURSERIES:

Appropriation:	\$ 7,500.00
Expenditure:	\$ 6,727.39

Operation and Maintenance:

Repairs, tools and equipment	126.93
Water service Mtce.	1,155.68
Mtce. grounds and watering	3,366.35
Hauling	207.09
Holiday	292.27
Mtce. buildings	148.22
Pruning	456.67
Propogating	162.30
Planting, transplanting, etc.	359.15
Flats, labels, etc.	73.69
Gas heating	148.22
Supplies and stationery	131.97
Chemicals and fertilizer	12.19
Trees, shrubs and seed	687.66

Less Credits:

Sale of trees and shrubs,	<u>601.00</u>	\$ 6,727.39
---------------------------	---------------	-------------

\*\*\*\*\*

AUTO MAINTENANCE:

Appropriation:	\$ 12,000.00
Expenditures:	\$ 15,757.93

Maintenance:

(Cont'd.)



Maintenance:

Vehicle No.	00	655.91	
"	89	610.91	
"	91	1,541.22	
"	98	1,091.67	
"	99	1,051.29	
"	100	722.64	
"	101	1,836.73	
"	113	534.31	
"	130	1,093.99	
"	144	1,593.24	
"	169	1,070.20	
"	170	989.51	
"	192	890.80	
"	200	272.04	
"	201	332.01	
"	374 (overhead loader)	1,329.05	
Chauffeur License		36.00	
Sundries		6.70	
Insurance		99.71	
			\$ 15,757.93

\*\*\*\*\*

MAINTENANCE OF TOOLS:

Appropriation: \$ 8,400.00  
Expenditures: \$ 5,021.72

Maintenance:

Supervision	1,733.73
Repairs, equipment	238.15
Water service mtce.	111.83
Mtce. grounds and buildings	329.01
Hauling	9.76
Holidays	225.99
Electric Light	175.10
Gas heating	149.56
Gasoline and oils	124.21
New tools	444.56
Registration Fee	1.50
Re-wiring building	530.10
Retroactive pay	101.77
Inventory	209.56
Supplies	690.46

Less Credits:

Cutting keys 53.57 \$ 5,021.72

\*\*\*\*\*

SUNDRIES:

Appropriation: \$ 1,300.00.  
Expenditures: \$ 370.57

\*\*\*\*\*

SALARIES:

Appropriation: \$ 29,373.48  
Expenditures: \$ 29,605.58

Expended:

Superintendent	7,409.92	
Ass't. Superintendent	4,070.67	
Accountant	3,453.84	
Clerk	2,294.86	
Stenographer-Clerk	2,691.20	
Stenographer	2,155.61	
Director of Recreation	4,297.07	
Ass't. Director of Recreation	3,232.41	\$ 29,605.58

\*\*\*\*\*  
GREENHOUSE:

Appropriation: \$ 8,646.00  
Expenditures: \$ 6,884.40

Operation and Maintenance:

Repair equipment	50.05	
Water service maintenance	180.31	
Holiday	213.15	
Watering	508.29	
Mtce. buildings	367.67	
Mtce. plants	1,179.07	
Planting, potting, etc.	847.26	
Propogating	369.96	
Flats and labels, pots, etc.	665.93	
Electric Light and Water	45.28	
Gas heating	337.54	
Supplies	127.91	
Chemicals	131.22	
Registration fee	3.00	
Retroactive pay	84.54	
Hauling	38.76	
New boiler	2,672.85	

Less Credits:

Sale of flowers	938.39	\$ 6,884.40
-----------------	--------	-------------

\*\*\*\*\*  
RINKS:

Appropriation: \$ 28,326.89  
Expenditures: 28,689.82

Maintenance:

Repair equipment	1,116.16	
Water service mtce.	651.23	
Hauling	2,305.62	
Holidays	1,000.51	
Mtce. and repair rink sides	2,374.11	
Cleaning and flooding	9,446.28	
Erecting and dismantling	2,021.28	

Rinks, Cont'd.

Electric Light	86.24	
Flood lighting	990.12	
Water, all rinks	600.00	
Heating, gas and coal	59.14	
Supplies and stationery	80.97	
Gasoline and oils	42.81	
Levelling rinks	3,820.56	
Hockey Nets, Ice paint, etc.	481.97	
New hockey rinks	1,661.37	
Penalty boxes, etc.	27.74	
Retroactive pay	994.71	
Power equipment maintenance	443.29	
New hose	485.71	
		\$ 28,689.82

\*\*\*\*\*

PLAYGROUNDS:

Appropriation: \$ 58,856.14  
Expenditures: \$ 46,252.09

Maintenance:

Mtce. & repair of equipment	3,490.47	
Water service mtce.	633.73	
Mtce. grounds	1,711.38	
Hauling	701.51	
Holidays	656.83	
New fences and mtce.	3,648.50	
Mtce. of huts and shelters	1,707.97	
Erecting and dismantling	3,567.67	
Mtce. Backstops	265.00	
Telephone	78.00	
Supplies and stationery	398.14	
Playground supervisors	5,808.34	
Playground supplies	2,300.31	
Rec. Centre Supervisors	1,862.07	
Gym equipment and supplies	704.62	
Rentals of schools	1,260.50	
Insurance	450.00	
New apparatus	232.27	
Construction work	865.69	
New recreation sites	10,716.18	
Renovations of old sites	1,687.08	
New equipment	1,225.70	
Band concerts	511.00	
Mtce. Mewata Rec. Hut	40.47	
Vouchers	585.64	
Mtce. Buildings	550.01	
Gas and oils	50.15	
Grass Seed	542.86	
		\$ 46,252.09

\*\*\*\*\*

STATIONERY:

Appropriation: \$ 935.00  
Expenditures: \$ 763.12

\*\*\*\*\*

WATER:

Appropriation: \$ 7,000.00  
Expenditure: 7,000.00

\*\*\*\*\*

NEW EQUIPMENT:

Appropriation: 2,177.00  
Expenditure: 2,203.20

\*\*\*\*\*

NEW AUTOMOBILES:

Annual payments 6,137.36

\*\*\*\*\*

ALL PARKS:

Appropriation: \$ 75,000.00  
Expenditure: \$ 105,455.09

Distribution:

Repair equipment	4,085.71
Water service mtce.	815.07
Hauling	4,540.53
Holidays	4,818.54
Mtce. Grounds	721.91
Mtce. Buildings	1,999.29
Gas heating	51.86
Supplies	1,183.37
Stationery	335.71
Gasoline and oils	155.15
New tools and equipment	2,127.99
Retroactive pay	742.37
Clerk	642.96
Cash jobs	653.04
Water pipe requirements	2,680.02
Exhibition grounds	937.19

Separate Expenditures:

Balmoral Circus	835.97
Beaumont Circus	238.80
Bridge Approach (Louise)	338.95
Bankview Plot	195.94
Bowness Road Plot	341.88
Cliff Triangle	325.61
Coste Place	1,125.58
Crescent Park and Triangle	3,391.26
Cartier Park	976.20
City Hall Gardens	503.51
Capitol Hill Park	552.71
Elbow Park Swimming Pool	524.13
" " " " Grounds	3,544.57
Elbow Park Car Loop	57.02
East Calgary Rotary	459.29
Earl Grey Park	543.05

Cont'd.

All Parks, Cont'd.

Garden Crescent	280.21	
Gladstone Road Plot	121.80	
Glencoe Gardens	446.06	
Hounsfield Heights	60.50	
Jacques Corner	9.96	
Kiwanis Park	807.42	
Killarney Park	1,073.02	
Knob Hill	372.00	
Levis Park	967.96	
Mount Pleasant Rotary Park	3,845.72	
Mountview Park	1,497.42	
Memorial Park 7,403.34,		
Less Int.		
Genotaph Fund <u>56.18,</u>	7,347.16	
Memorial Drive and		
Sunnyside Blvd.,	4,436.97	
Mewata Boulevard Triangle	814.44	
New Rosedale Park	1,970.74	
O'Briens Corner	143.64	
Prince's Island	4,278.49	
Prospect Ave. Plot	144.23	
Rideau Plot	98.96	
Riley Park	8,895.58	
Riverdale Ave. Plot & Triangle	182.56	
Rosevale Park	259.26	
Roxboro Park	20.64	
Renfrew Park	304.33	
St. George's Island Park	12,779.00	
Sharon Ave. Plot	42.08	
Short Street Plot	154.66	
Scarboro Plot	565.10	
Scotland Street Plot	143.30	
Sunalta Park	60.16	
Sunnyside Slope	48.47	
South Calgary Park	1,400.38	
South Mt. Royal Park	1,856.44	
Superior Ave. Plots	165.38	
Tompkins Park	445.15	
Triangle Park	1,259.22	
Tuxedo Park	543.63	
Talon Ave. Plot	419.50	
Ward Plot	163.52	
Westmount Blvd. Park	4,478.92	
West Mt. Pleasant Park	521.63	
Winston Heights	286.86	
Wood, J. H., Park	1,191.25	
Watson's Corner	<u>106.19</u>	\$ 105,455.09

\*\*\*\*\*

SUMMARY OF APPROPRIATIONS AND EXPENDITURES, 1952.

Salaries	29,373.48, Appropriated,	29,605.58, Expended.	
St. George's Island	19,500.00	25,129.65	
All Parks	101,087.17	105,455.09	
Golf Course	23,500.00	16,948.57	
Mewata Stadium & Hillhurst,	17,000.00	14,371.03	
Playgrounds	58,856.14	46,252.09	
Rinks	28,326.89	28,689.82	
Swimming Pool	12,000.00	9,807.53	
Boulevards	12,000.00	10,920.59	
Cemeteries	74,461.17	97,094.33	
Nurseries	7,500.00	6,727.39	(Cont'd.)

Summary, Cont'd.

Greenhouse	8,646.00, appropriated,	6,884.40 expended,
Stationery	935.00	763.12
Tools and equipment	8,400.00	5,021.72
Auto Maintenance	12,000.00	15,757.93
Water account	7,000.00	7,000.00
Sundries	1,300.00	370.57
New Equipment	2,177.00	2,203.20
New Automobiles, payments	6,684.88	6,137.36
	<hr/>	<hr/>
	\$ 430,747.73	\$ 435,139.97
	<hr/>	<hr/>

\*\*\*\*\*

GENERAL REVENUE STATEMENT, 1952

Monument and vault fees	514.10, Estimated,	535.00, Revenue.
Cemetery Lot Sales	2,781.50	2,844.20
Transfer Fees	42.50	37.50
Rink Fees	571.50	585.50
Golf Course	16,486.55	19,195.25
Golf Course, Refreshments		1,758.35
Grave Digging	14,197.00	19,227.50
Swimming Pool	8,636.90	7,146.75
Percentage of Gate Receipts	289.25	2,551.66
Maintenance of Grave Plots	2,929.56	2,946.90
Rental, Lowering Device	1,894.00	2,002.00
Calgary Football Club, re. Stadium,		5,000.00
	<hr/>	<hr/>
	\$ 48,342.86	\$ 63,830.61
	<hr/>	<hr/>

CREDITS TO ESTIMATES, 1952

ALL PARKS:

Labor, Tech. Institute	
	\$ 118.76
Leases	1.00
Damage, fence	290.09
" "	15.00
Tree Removals	10.00
	<u>10.00</u>
	\$ 434.85

AUTO MTCR:

Insurance claim	\$ 5.00
-----------------	---------

PLAYGROUNDS:

Rental, Rec. Hut	727.75
Leases	8.00
Repair, swings	7.00
	<u>7.00</u>
	742.75

GOLF COURSE:

Sale of sink	180.00
--------------	--------

STADIUM:

Moving bleachers	59.19
Permits	20.50
Lights	1,189.00
Concession	601.55
Labor, supplied	10.96
	<u>10.96</u>
	1,875.20

RINKS:

Loss of Hose	327.90
--------------	--------

SWIMMING POOL:

Commission, A.G.T., pay station	3.15
------------------------------------	------

CEMETERIES:

Late funerals	403.98
Disinters	140.00
Transportation	26.00
Vault	2.00
Foundations	1,439.10
Repair of graves	30.40
Tree removals	2.00
Cutting Grass	2.50
Sale of weedkiller	1.00
Conscience money	3.00
Int. Perp. care	14,056.54
	<u>14,056.54</u>
	\$ 16,106.52

BOULEVARDS:

Damage	6.00
Rental, benches	90.00
Construction	63.57
Tree Damage	25.00
	<u>25.00</u>
	184.57

SUNDRIES:

Moving Bleachers	228.71
Repair Mowers	41.77
Clearing trees	10.93
Cutting grass	40.50
Tree spraying	8.84
Labor, Tech. School	2,054.38
	<u>2,054.38</u>
	2,385.13

GREENHOUSE:

Sale of flowers	379.05
-----------------	--------

NURSERY:

Sale of trees	593.50
---------------	--------

TOTAL: \$ 23,217.62.

---

---

- PARKS DEPARTMENT PERSONNEL -

Superintendent - A. Munro

Ass't. Superintendent - S. H. Daines

PARKS OFFICE

Chief Clerk - H. W. Jeffery  
Gen. Clerk - T. C. Kinloch  
Steno-Clerk - Miss R. Ekrol  
Stenographer - Miss M. Guarascio  
Time Clerk - G. A. Skeet

CEMETERIES

Queen's Park Cemetery

Caretaker - F. West  
Staff - F. Antoniuk,  
A. Davidenko.

Union, Burnsland, St. Mary's.

Caretaker - J. Sykes  
Staff - W. Lindsay, H. Lees,  
A. Gowan.

SWIMMING POOL

Supervisor - J. Taylor  
Staff - D. MacPherson,  
B. Richards.

MEWATA STADIUM

Caretaker - J. Taylor  
Staff - J. Stewart

ST. GEORGE'S ISLAND  
PARK AND ZOO

Curator - T. Baines,  
Staff - M. Todesco,  
S. Sluth,  
G. Christian,  
R. McBride.

RECREATION OFFICE

Director - W. Garnett  
Ass't. Director - J. R. Houghton  
Staff - J. Rowland

SHOPS

Foreman - O. Forster  
Ass't. Foreman - C. Henry  
Staff - R. Baxter,  
L. Breland,  
R. Rosby,  
J. Pike.

BOULEVARDS

Foremen - A. Ashby  
- N. Campbell  
- W. Nightingale

NURSERY

Foreman - J. Aitchison

GREENHOUSE

Foreman - H. Benstead

DISTRICT FOREMEN

G. Climo, F. Haddock, D. Stark,  
D. Gill, R. Cabana.

TRUCKS

S. Mudry, C. Rouleau, A. Ward,  
W. Clarke, C. Ernst.

WATER SERVICE MTCE.

Foreman - S. Jonathan  
Staff - H. Hoines

ALL PARKS

~~E. Goldsmith, J. Byers,  
A. Mosser, M. Nelson,  
P. Lenihan, H. Laycock,  
P. Baska, W. Reynolds,  
J. Maker and J. Wilson.~~

\*\*\*\*\*