



1961

ANNUAL REPORT

- **PARKS**
- **RECREATION**
- **ZOO**
- **CEMETERIES**

CITY OF CALGARY

I N D E X

Superintendent's Report	1
Park Maintenance Division	3
Cemeteries	8
Zoological Gardens	11
Recreation Division	13
Construction and Services Division	22
Budget Report	26
Expenditures and Revenues	28

CITY OF CALGARY

PARKS, RECREATION AND CEMETERIES DEPARTMENT

ANNUAL REPORT - 1961

To His Worship Mayor H. Hays,
and Members of the City Council.

Gentlemen:

Please find here presented the Annual Report of the Parks, Recreation, Zoo and Cemeteries operations for the year 1961.

This Department was responsible for operations during the year to the value of more than \$1,800,000.00 as follows:

Parks Operations	\$	859,486.00
Recreation Operations		343,074.00
Cemeteries Operations		164,132.00
Capital Works		288,600.00
Capital Works for, or by Other Departments		<u>209,375.00</u>
	\$	1,864,667.00

The continued annual increase in this total reflects not only City growth and increasing costs, but also the increasing demands and pressures of the citizens for more Parks and Recreation services; a trend that is forecast to greatly accelerate with the inevitable increase of leisure time.

The actual cost of maintaining all parks during the past five years has been decreasing. This remarkable fact is best illustrated by the ratio of the appropriations to the acres of developed land to be maintained. A graph illustrating this fact is contained in this report.

In 1958 about \$640.00 per acre was appropriated; in 1962 approximately \$450.00 will be budgeted. This has been made possible by switching emphasis from floral decorative parks to the more natural types, by staff re-organization, and mechanization of our operation. However, I believe that any further decline in this appropriation ratio will result in an inadequate maintenance program and eventually expensive re-development costs.

In presenting this report, I wish to acknowledge the high standard of co-operation and personal interest of the employees of this department in achieving our two basic objectives of providing a wholesome outlet for leisure time for Calgarians and the beautification of the environment in which they live.

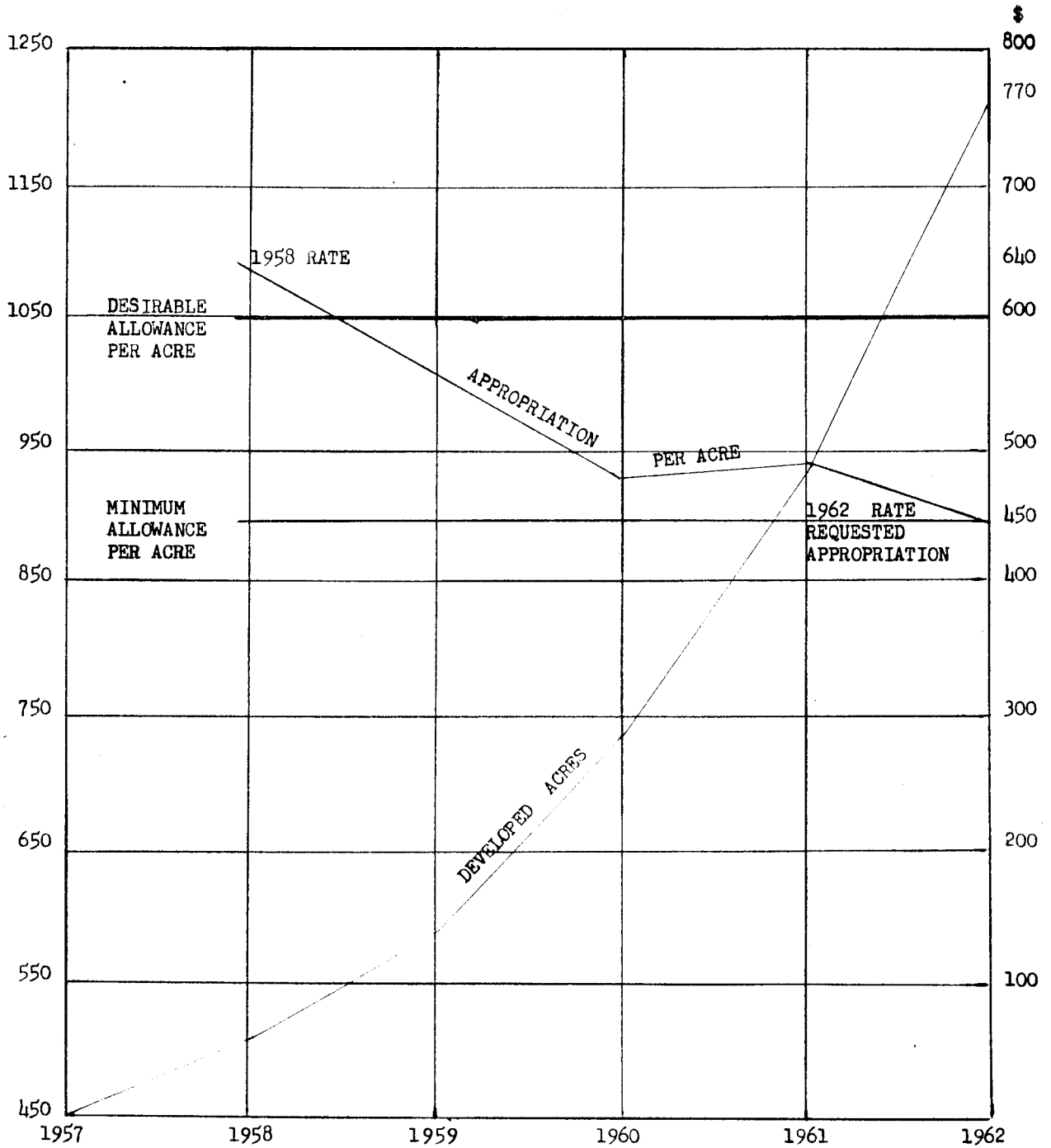
The details of these activities may be found in the following pages.

Yours respectfully,

H. Boothman, Superintendent

ACRES OF
DEVELOPED
PARKLAND

MAINTENANCE
COST PER ACRES



PARKS MAINTENANCE DIVISION - MR. S. H. DAINES, ASSISTANT SUPERINTENDENT

The year 1961 was characterized by an early Spring with little moisture at the beginning and abnormally high temperatures. This resulted in the rapid growth of trees and shrubs, etc., with the appearance of a wonderful early Spring. Then a late heavy snow struck, resulting in extensive damage to many trees throughout the city. The clean-up following this unfortunate event required almost four weeks to complete.

For the balance of the year conditions were fairly normal, and the regular maintenance work throughout the many parks was carried on successfully. Water rationing regulations were of some concern during the Summer, however the effect was overcome to some extent by the establishment of a shift system of watering during off hours.

Following is a review of items of interest in connection with activities throughout the system of park areas.

RILEY PARK: Once again this attractive older park was a place for thousands to enjoy. The Canadian National Cricket Tournament was held here, and teams from all over Canada competed. Many favourable comments were received on the condition of the turf. The wading pool was enjoyed by thousands of children throughout the Summer. An apron of black-top was provided between the dressing rooms and the pool, which was a great improvement resulting in less dirt being carried into the pool.

MEWATA CLOVER LEAF: With the changes to the traffic pattern here, considerable landscaping work was required. Some 1,500 yards of loam was spread in the Fall in preparation for new grass areas. Seeding of these areas will be carried out in the Spring. The site of the 5900 locomotive at this location was beautified with the planting of twelve flats of mixed annuals and 130 geraniums.

PRINCE'S ISLAND: Much early Spring maintenance was required to overcome the effects of flooding and ice encroachment during the Winter. The park was once more used as the site for the Summer Day Camp by the Recreation Division. It is hoped that the approach to the Island will be improved by the installation of a permanent bridge, before too long.

ROCK GARDEN 10 ST. N. W. This beautiful garden was carefully maintained during the year and was admired by thousands. Some five hundred Alpine plants were added to the profusion of plants growing here and also at the Rockery on 14 St. N. W.



RIVER PARK ARBORETUM



A RESTFUL DECORATIVE PARK



ELBOW RIVER ON SANDY BEACH

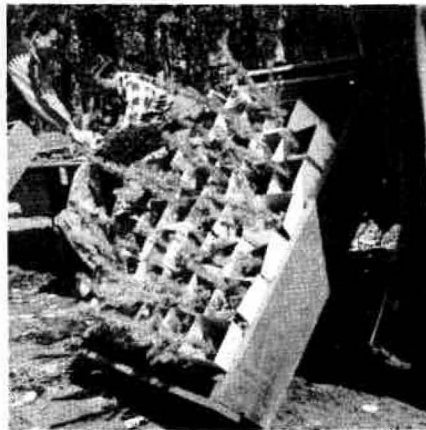


GLENMORE PARK



CRICKET AT RILEY PARK

SMALL SPRUCE PACKAGED FOR
DISTRIBUTION TO GRADE III
PUPILS ON ARBOR DAY



CHILDREN'S POOL AT RILEY

ST. GEORGE'S ISLAND PARK: This park in conjunction with the Zoo was undoubtedly visited by more people than any other park in the City. A total of thirty picnics were held during the Summer with anywhere from one hundred to four hundred people attending each picnic. Extensive renovations were made to the grass areas in the park with some four hundred yards of loam and eight hundred pounds of grass seed being used.

READER ROCK GARDENS: As is always the case, many people from many places visited this beautiful and interesting garden. Considerable renovating and replanting was carried out within the garden with 205 flats of Alpine and perennial plants being used. Many thousands of Alpine and perennial plants were propagated at this location during the Spring season. Over thirty varieties of rare shrubs and trees were grown from seed and number some three hundred specimens.

GLENMORE PARK: Continued development of this natural park area is resulting in a large family-type park, wonderfully suited for group outings. The area is now well serviced with roads and picnic facilities and is becoming a popular weekend attraction. The two new restrooms built as Winter Works projects, should be connected to the City water supply as soon as possible in the new year.

RIVER PARK: This large park was given extensive top-dressing with good results. The new shrub and perennial beds which were prepared under the Winter Works program were planted with a total of 246 shrubs and 274 perennials. Replacement of a number of tree specimens which were Winter killed was necessary. The creek flowing through this park was improved in appearance by the addition of a few naturally constructed dams and waterfalls.

STANLEY PARK: Gradual development of this large park is continuing. Much loaming and seeding has been done by the Construction crews and it is planned to provide a cricket pitch at this location. A cable fence was installed along the new hard surfaced road as a protective feature. Painting of the service buildings in the park was started and will be completed in the new year.

BOWNESS PARK: Responsibility for the operation and maintenance of this park was officially transferred to this Department on 1st April. Considerable landscaping and renovating was required in the vicinity of the new bridge at the entrance to the park. The three new restroom units were put into operation after some delay which was caused by lack of sufficient water pressure. The old structure which housed the orthophonic equipment was removed from the lagoon.

Patronage at the park was somewhat lower during 1961 and we believe this is due to two reasons. There is no doubt that the Transit system strike prevented a good number of people from travelling to the park while the strike was in progress. Of the one hundred and twenty-two scheduled picnics recorded, twenty-four were cancelled because of poor weather conditions.

Use of the dance hall as such was discontinued and the park closed at ten o'clock each night, with the result that rowdyism and vandalism was almost non-existent.

Improvement of the appearance of the old swimming pool was made at the end of the season by removing the old dressing rooms. The popularity of this park has decreased considerably since the swimming pool was abandoned and it is hoped that eventually a new pool will be provided.

GARDENER APPRENTICESHIP TRAINING PROGRAM: A programme of gardener apprenticeship was started in 1961 to extend over a four year period. Five apprentices are being trained under this programme, and for the purpose an Apprenticeship Training Board was organized as follows:

General Chairman:	S. H. Daines, Assistant Superintendent
Job Instruction:	D. Gill Foreman, District 2
	H. Laycock Foreman, District 5
	D. Stark Foreman, District 6
Plant Material Instruction:	R. Dold Foreman, District 4
	K. Oelke Foreman, District 3
Theoretical Instruction:	H.J. Benstead Foreman, Greenhouse
	W. Webber Gardener, Nursery
Advisors:	H. Boothman, Superintendent
	K. Ruttle, Chief Training Officer, Personnel Department

Keen interest in the program by apprentices and instructors alike is evident and it is gratifying to record that worthwhile progress is being made by all concerned.

GLENORE NURSERY: Development of this unit is continuing. Much loam is still required on some areas to provide a sufficient depth for the growing of healthy vigorous specimens. Part of the area was sown to crop barley early in the Spring and was plowed under during the Fall. This not only kept weeds under control but will prove beneficial to the soil.

A line of spruce and poplar trees were planted on both sides of the main road and a similar improvement along the lateral roads will be carried out in the Spring. Specimen trees and shrubs with name tags were planted in attractive arrangements to the north of the main road inside the entrance to the grounds, together with a large circular flower bed in the centre of which is a flagpole. This bed was planted with cannas, together with a border of white dwarf mums. The area attracted many visitors seeking information.

The old Livingston log cabin was fenced in with post and cable and the area surrounding it was levelled and loamed and planted with shrubbery.

Removal of the old farmhouse on the property is recommended due to the fact that it is deteriorating badly and is unsuitable for use. It is hoped that a proper service building with sanitary facilities and storage space for vehicles and equipment will be provided at the nursery before long. A garage in conjunction with the residence is urgently required.

At the present time the public is gaining access to the boat dock at the reservoir through the nursery. It is hoped that an access road will be provided outside the nursery before long, as some damage and inconvenience has been caused by people parking in the nursery.

The following numbers of nursery stock were shipped to the various parks, boulevards and cemeteries during the planting season.

<u>TREES</u>		<u>SHRUBS</u>	
Ash	251	Cotoneaster	1,798
Birch	3,620	Nanking Cherry	1,036
Elm	2,151	Lilac	1,374
Poplar	1,034	Dogwood	1,039
Spruce	660	Honeysuckle	543
Misc.	246	Spiraea	571
		Misc.	<u>1,058</u>
	<hr/>		
	7,962		7,419
		Perennials	4,500

GREENHOUSES: With the continued growth of the City and the creation of additional floral parks, the facilities at the greenhouses were taxed to the limit. In order to provide more space to produce the required stock needed for Spring planting, a new 70' X 30' greenhouse was constructed to the south of the existing units. In addition, a new 30' X 26' potting shed was combined with this unit as well as a boiler house 36' X 26'. These three developments will be completed during the Winter and should be ready for use in the new year.

There were over 154,000 plants successfully produced and distributed from the greenhouses in the 1961 season and were distributed as follows:

	<u>Annuals</u>	<u>Geraniums</u>	<u>Dahlias</u>	<u>Double Petunias</u>	<u>Misc. Specimens</u>
District 2	47,686	860	819	300	17
District 3	20,591	298	140	469	12
District 4	8,775	639	66	-	240
District 5	7,415	185	33	-	275
District 6	33,274	1,291	1,531	440	500
St. Mary's Cemetery	1,500	90	-	-	118
Union & Burnsland Cem.	10,605	340	175	-	-
Chinese Cemetery	630	48	-	-	-
Queen's Park	5,900	245	20	60	80
Transit System	378	-	-	-	-
Fire Department	1,385	48	-	-	-
Electric Lt. Dept.	4,416	71	55	60	13
Sewage Disp. Plant	315	-	-	-	-
Waterworks	1,640	-	66	-	-
	<u>144,510</u>	<u>4,115</u>	<u>2,905</u>	<u>1,329</u>	<u>1,255</u>

CEMETERIES

QUEEN'S PARK CEMETERY: During 1961 definite improvement in the appearance of this Cemetery was obtained by lawn seeding Section G, and the grading down and loaming and seeding of the southern side of what was called the gully. The north bank is now being filled and graded with the natural contour being retained, so as not to disturb the natural course of the little brook. This area will be seeded in 1962 and will later provide space for a number of grave plots.

The area used for non-care burials during the past few years was loamed and will be seeded in the Spring. It is hoped that we will be able to continue using this section for indigent burials, but owing to the reclamation of the land beyond the cemetery, the water table has been raised to the extent that if it were not for improving the appearance of the adjacent perpetual-care section, its use would not be warranted.

Re-seeding of the area from which the turf was removed for use at Broadview Soccer Park and elsewhere was done, and all graves which had settled were filled and seeded.

It gives us satisfaction to report that relations with plot owners and funeral homes remain harmonious.

Extension of the storm sewer outflows is now completed and will permit the grading down and landscaping of the upper end of the ravine. This grading will be done in the Spring so that the adjacent land can be prepared for burials. This will economically improve the appearance of this north-east section.

In deference to the requests of the residents to the north of the Cemetery, some sixty spruce trees were planted as a start towards a buffer screen along the north side. This will be furthered by planting poplar trees in the Spring.

The desirability of extending the pavement and asphalt curbing is here emphasized, also the need to complete the chain link fencing where required. Should any good quantities of course rock become available, it would be advisable to base fill the coulee at the west-centre of the cemetery to make possible a main driveway from which branch roads can radiate. It would be advisable to have the gut ditch at the bottom dredged out in 1962.



The general appearance of lawns and floral displays during the summer was quite good and a generous contribution of surplus annuals from one of the local nurseries assisted in this regard. The spraying of the lawns for weed control was not too successful and some damage to trees was noted.

Considerable planting of trees and shrubs throughout the cemetery was carried out including a number of plantings on grave lots which were paid for by the owners. Many of these were mountain ash which do not appear to be thriving too well due to the exposed location. We will endeavour to persuade lot owners to have birch trees planted in future. Spraying of the spruce trees in the cemetery was carried out as treatment against the scale with which they are affected. Complete pruning of all trees in the cemetery requiring this attention will be attempted before spring.

The performance of the staff during the year, both permanent and casual was commendable, and we trust that the students who were with us this year will be returning again next season.

Burials for the year 1961 totalled 863.

UNION CEMETERY: This Cemetery was thoroughly renovated in the Spring, with all grass areas being raked and old wreath frames removed from many grave plots. Several monuments adjacent to the roadways and which were beginning to tilt off balance, were straightened.

Perennial beds were all dug over and new stock planted. The flower beds on private grave plots were prepared and planted, according to the wishes of the lot owners.

As a result of this activity, and with regular watering and cutting of the grass areas, the appearance of the cemetery was quite good.

The roads throughout the cemetery are beginning to deteriorate considerably and are in need of scarifying and oiling. Perhaps this can be rectified during the coming year.

Over nine hundred sunken graves were repaired during the year, requiring some 480 cubic yards of loam to bring the areas to the proper level.

Burials in this cemetery totalled 158.

BURNSLAND CEMETERY: Similar treatment as was given to the Union Cemetery in the Spring was applied to this cemetery, with the shrubbery beds being dug over and some new stock planted.

A similar situation exists with regard to the roads and it is hoped to make some improvements in their condition before long.

Repairs to some four hundred feet of chain link fencing along the McLeod Trail was required and carried out.

The Field of Honour section of this Cemetery was given special attention for Decoration Day and many visitors came to the Cemetery for the special ceremonies conducted at that time, with everything going along smoothly.

A further area of some 24,200 square feet of ground was prepared and seeded in the Field of Honour. Space for approximately 1,000 future burials is now available in this section. The total number of burials in the Field of Honour is now 2,795, with 168 being made in 1961.

Almost seventeen hundred sunken graves were repaired within this Cemetery during the year, which amounted to over 67,800 square feet of new seeding.

Burials in this Cemetery during the year totalled 326.

ST. MARY'S CEMETERY: A general Spring clean up and regular maintenance throughout the year including the old section was carried out in this Cemetery with the overall appearance being quite satisfactory.

Dandelion killer was applied throughout the Cemetery with satisfactory results. Over seven hundred sunken graves were repaired, which amounted to over 28,000 square feet of new seeding. Some treatment to the roads will be required in the coming season to put them in good shape.

Burials in this Cemetery totalled 261.

CHINESE CEMETERY: This comparatively small cemetery was kept in trim condition during the year. Some 120 sunken graves were repaired, which amounted to a total area of approximately 4,800 square feet which was re-seeded. A number of new grave blocks were marked out and cement markers placed.

Total burials in this cemetery during the year were 36.

Total burials throughout all Cemeteries in 1961 numbered -
1,644.

ZOO CURATOR'S REPORT 1961 - T. BAINES, CURATOR

Despite some minor disappointments, I feel a successful year can be reported, so I will endeavor to summarize some of the year's events.

MAMMALS: As has been mentioned in previous reports this has been our main strength and this year steady improvement can again be reported. However, as the North Extension is only now coming in to use, no great effort was made to increase our mammals but rather to consolidate what we have and ensure that suitable specimens will be available for above mentioned extension.

Having this in mind, mammals obtained from outside sources in 1961 were almost entirely confined to small specimens. Only exceptions were a Russian Brown Bear from the National Zoo in Washington, D.C., a Burro from Mr. Allen Woodrow of Castlegar, B. C., Rocky Mountain Goats from Banff National Park and the State Game Commission of Helena, Montana.

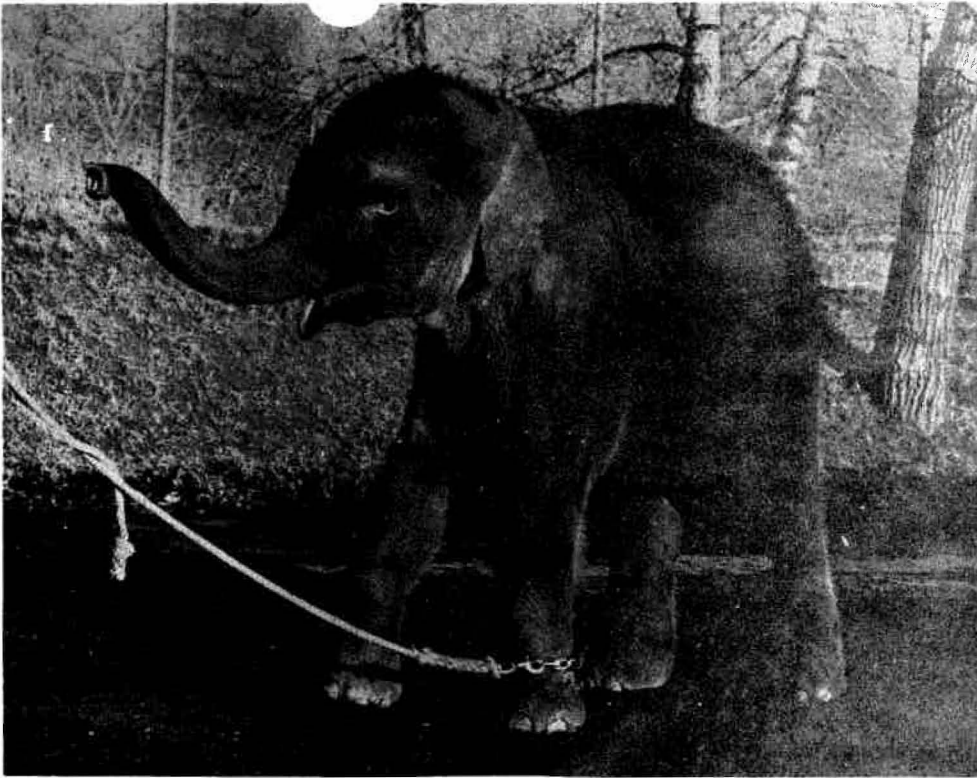
A number of small mammals however were added including an Albino Dingo from San Diego, Bush Babies from Dublin, Owl Monkeys from Columbia etc. The birth rate was probably the highest in our Zoo's History. Some 25 species (excluding common varieties) reproduced, including Kangaroo, Wallaby, Lion, Dingo, Prehensile Porcupine, Drill, Otter, Cape Hunting Dogs, Pronghorn, Agouti, Peccary Mara etc.

BIRDS: This collection has been vastly improved. The New Waterfowl House was only put into use in December but together with projected improvements in this section of the Park will enable us to add to our already fine collection of Swans, Geese and Ducks. Several species have been added to our Waders in the Aquatic House and this is a really fine year-round attraction. Our collection of Birds of Prey has been added to, the most valuable addition being a Great Grey Owl.

Our Pheasants and Game Birds collection remain about the same, but it is hoped to improve this section next year. Numerous small birds have been added but as stated in my 1960 report, any large extension of Tropical Birds will have to await a proper Bird House.

REPTILES: Collection has remained almost the same, but the fact the Tuatara continues to thrive which is highly gratifying and the Boas from Trinidad proved a good attraction.

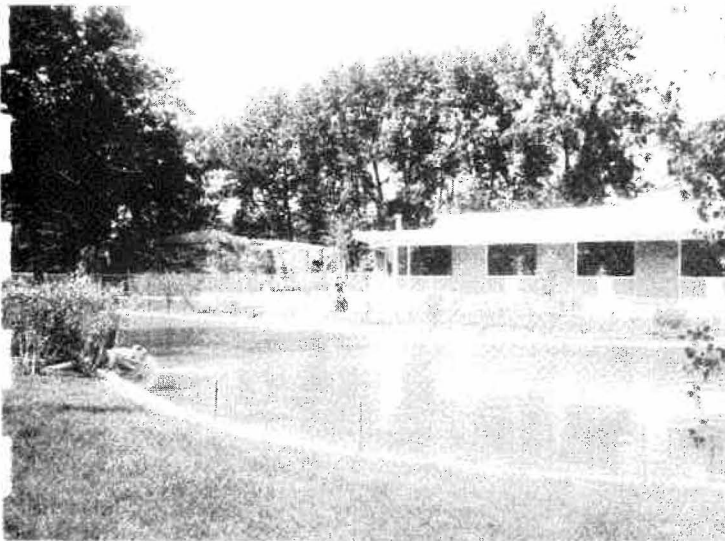
EXCHANGES: Have been carried out with many Zoos including Granby, Toronto, Winnipeg, San Diego, Vancouver, Edmonton, Brookfield, Chester Catskill, Dublin, Jersey, Copenhagen, Trinidad, Lansing, Washington, etc. etc. Mr. D. B. Archer of Calgary and Barrancabermeja, Columbia, was again very generous in sending us mammals and birds.



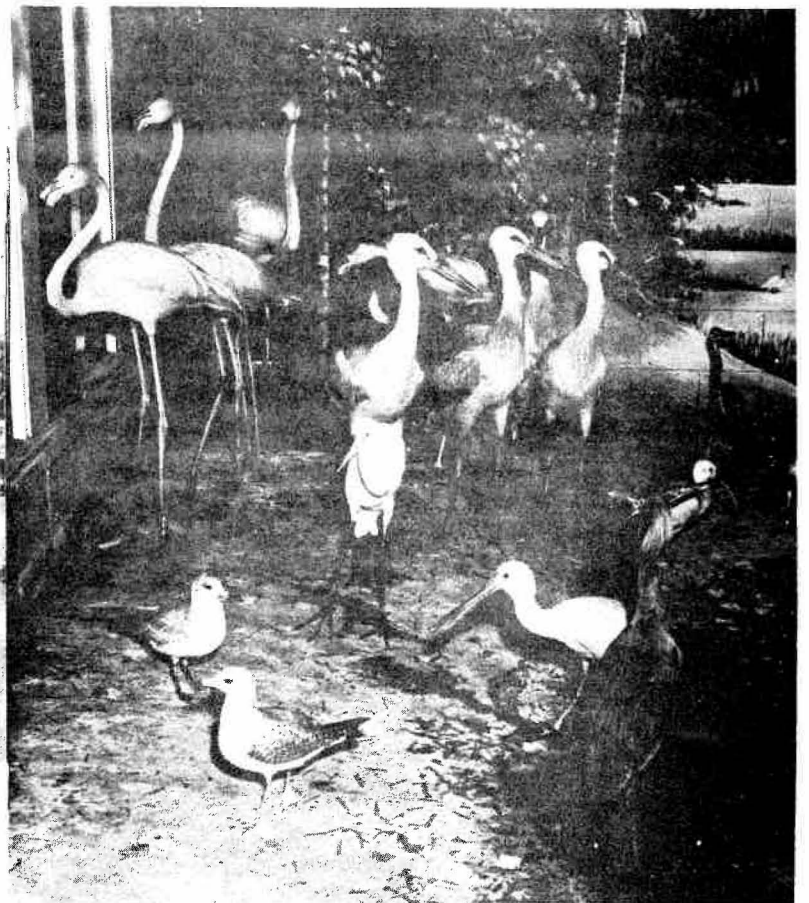
GYRO THE ELEPHANT



RUDOLPH AND FRIENDS



WATERFOWL HOUSE AND POOL



BIRD HOUSE EXHIBITS

INVENTORY: (With corresponding figures for 1960 in brackets)

402 (336)	Mammals	of	136 (138)	species
607 (573)	Birds	of	223 (221)	species
70 (71)	Fish	of	14 (11)	species
19 (11)	Reptiles	of	11 (5)	species

CHILDREN'S ZOO: Is now open every day in the year, as no count of attendance is kept in the winter, exact number is not known but is probably in the neighbourhood of 250,000 for a whole year. Gyro has now increased from her original 333 pounds to her present 860 pounds. The New Building is functioning excellently and holding as it does such varied specimens as the Elephant, Deer, Monkeys, Rodents, Toucans, Finches, Reptiles, etc., it has something to offer to all ages.

SIGNS: Are well up to date as regards Mammals although the new North Extension may require a new type of sign to include pictures, as numerous species of animals will be running together. Bird signs are gradually being erected.

PUBLIC RELATIONS: Have I think, been well maintained although I believe the Society would greatly benefit by the regular issuing of the monthly Newsletter and also if possible of the restarting of the "Honker".

RUDOLPH: Was again in great demand; cold weather caused cancellation of some 40 parties but 14 visits were made to such "Shut In" Groups as Hospitals, Homes etc and seventy to other parties. In all some 1,300 people attended the "Shut In" Parties and probably 16,000 the others. In 8 years, Rudolph has visited 630 parties with an attendance of well over 100,000. His popularity is so great that it is impossible to supply all requests despite every effort of those concerned.

THE STAFF: Have co-operated in an excellent manner, this applies not only to the regular City Employees but also to the young people who have staffed our Children's Zoo. Through the latter's efforts, many valuable animals have been raised for the Zoo and the fact that some three quarters of a million people have now visited this Section speaks well of the staff. The increased Zoo Establishment authorized last year has I think functioned smoothly but with another 15 acres of land and the New Waterfowl House - this building alone covers 3,600 square feet - and other added exhibits, our total staff of 13, including Curator, Foreman, Truckdriver and two evening men are of a necessity short handed. I say evening men, because we still have no coverage between 11 P.M. and 8 A.M. other than any casual coverage given by the Curator.

ENTERTAINMENT: Mr. Don Harvie again put on a fine Banquet for the Zoo Staff which was as usual much appreciated and the annual Zoo Staff and Directors Banquet was another popular item and your President, Mr. Lars Willumsen treated the Staff to Buffet Supper just before Christmas.

THANKS: Finally it remains only to thank all those whether at Civic, Society Staff level or indeed everybody who worked so harmoniously to contribute to such a successful year.

RECREATION DIVISION - R. C. RATHIE, DIRECTOR

Throughout 1961, the Recreation Division has endeavoured to realize its general objective of ensuring that Calgary residents of all ages have an opportunity to engage in a wide variety of wholesome, worthwhile recreational activities. The operation of programs, co-operation with other agencies and organizations, the provision of facilities, and the extension of advisory and consultative services have contributed to the attainment of this objective.

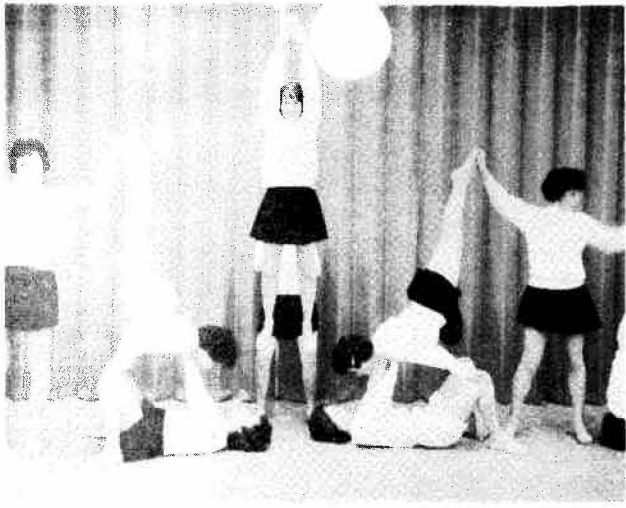
This report will indicate the extent to which divisional personnel have succeeded in serving the public. Although quantitative figures are given, it should be remembered that the more intangible, qualitative aspects of the program are of prime importance. Comments from participants and members of the public, in general, indicate that some success is being achieved in improving the quality of the program.

DIVISIONAL RE-ORGANIZATION: In an effort to extend and improve the services of the Division, a new position, that of Supervisor of Athletics and Special Events was established, the number of Area Supervisors positions was reduced from five to four and job descriptions of all supervisory positions were revised. Mr. J. R. Houghton was appointed Supervisor of Athletics and Special Events. Mr. J. H. Worsfold, a former Area Supervisor was promoted to the position of Supervisor of Area Programs and Mr. R. R. Lavery, another Area Supervisor, was promoted to the position of Supervisor of Recreation Facilities. The net result however did not require an increase in personnel.

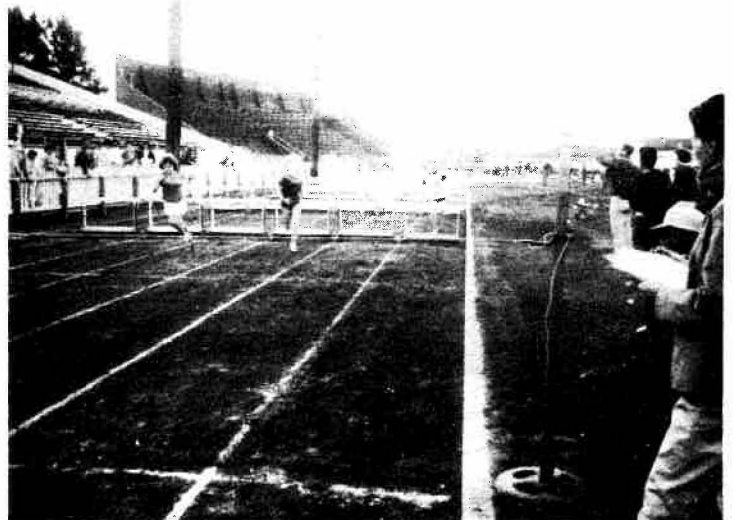
Other re-organizational features which proved particularly effective during the year included the incorporation of the Recreation Construction personnel into the Division, providing for direct control and increased flexibility in the planning and operation of playground and ice rink construction programs and maintenance of stadia. The use of Centre Supervisors in winter centres improved control and discipline at the centres and permitted more diversification of the Area Supervisors' duties. The increase of leadership to two leaders on most playgrounds was another method used to improve quality, increase safety and provide for closer attention to the varying needs and interests of children of different ages.

RECREATION PROGRAM

Fall and Winter Recreation Centres: Twenty-four Recreation Centres were operated in schools throughout the City for two ten-week periods. From January until April and October until December, thousands of children, youth and adults participated in physical activities, crafts and other passive forms of recreation.



RECREATION ACTIVITIES IN VARIETY



Centre programs were organized for children and youths, 9 - 12, 13 - 15, 16 - 18 years of age and for adults. A total of over 13,500 persons registered for these programs. Adult programs are either instructional or non-instructional. Badminton groups are an example of Adult non-instructional programs. All other programs follow a detailed program content as determined by the Area Supervisor and the leader concerned. Once again, quality has been improved as the activity has provided a progressive, worthwhile experience.

Playgrounds: Twenty-four supervised playground programs were operated by the Recreation Division for eight weeks during July and August. Each two-week period, a new basic theme was followed at each playground. The themes selected in 1961 were the Stampede, Nature Study, Carnival and Olympics. During these theme periods, activities were based on the particular theme then being followed. Each theme program culminates in a special event during which the children exhibit their craft projects or demonstrate the activities they have learned. Every effort is made by the playground staff to ensure that the children learn interesting and useful things while playing. Learning may affect attitudes, skills and general knowledge.

Day Camp: The 1961 Day Camp Program saw increased progress toward becoming a proper camping program. A camp director and four counsellors worked diligently to teach the campers much that they should know about the various aspects of camping including nature lore, camp crafts, setting up tents, games and campfire programs. The program adhered to small group emphasis of camping in which a small group of about ten children carry out most of their activities under the guidance of their counsellor. Through the small group contact, counsellors were able to get to know the campers very well and were able to make some contribution to the personality development of their charges.

Unfortunately, the prolonged transit strike resulted in a substantial decrease in the number of children who could attend the camp. In fact, it was necessary to cancel one camp period and combine it with another one to give sufficient numbers for the camp. Altogether, five one-week camps were held.

The campers who did attend, however, enjoyed a genuine camping experience during their week at camp. Except for the fact that the campers went home at night, they were in a real camp, complete with tents cook-outs, sing-songs around the fire and an overnight sleepout.

Athletic and Special Events: The Athletic and Special Events program was started in 1961 to provide assistance to the many athletic and other recreational groups operating within the City. Owing to the unfortunate illness of Mr. J. Taylor, the Supervisor of Athletics and Special Events was required to defer work on the development of the Athletic and Special Event program to assume responsibility for swimming pools and playing fields.

Despite this change of responsibility, some significant developments occurred in this section of the Division's work.

Band Concerts: A band concert was held at Bowness Park with the co-operation of Captain F. M. McLeod of the Lord Strathcona's Horse (R.C.)

Fastball and Baseball: The Supervisor also worked closely with the Calgary and District Fastball Association, Church Leagues, Industrial Leagues, the C.C.R.A. and the Calgary Boys' Baseball Association regarding organization, the preparation of schedules and the allocation of facilities.

With reference to facilities, it should be noted that the co-operation extended by the Calgary Public and Separate School Boards made it possible to give greater service to the various groups concerned.

Hockey: Similar co-operative relationships with the many hockey leagues resulted in improved hockey for the young players in the City. To increase the effectiveness of this co-operation the Supervisor has accepted the position of Executive-Secretary of the Hockey Commission. In this way, the Recreation Division is able to be part of, and give assistance to, the main co-ordinating body in the hockey program in Calgary. Direct assistance has been given to the C.C.R.A. in the preparation of schedules and the allocation of facilities.

The Recreation Division operated the Tiny-Mite Hockey Program for boys under 12 years of age. In the 1960 - 61 season, 38 teams were entered in this league. In the 1961 - 62 season, this league had grown to include 50 teams.

Volleyball: In the fall of this year, the Division was instrumental in the development of an augmented Ladies' Volleyball League and a Men's Volleyball League. Once again, through the Supervisor of Athletics and Special Events, who is a member of the governing committees of these sports, the Recreation Division is able to make an important contribution to the recreation life of the Community.

Table Tennis: Table Tennis is another area in which the Division has been able to give assistance. In addition to aiding in the planning and conduct of the annual tournament, the Supervisor assisted in the formation of the Calgary Table Tennis Association.

Swimming Instruction: In 1961, the swimming instruction program was extended to cover the period from mid-June until the end of August. Three sets of classes were held; one during June, one in July, and one in August. Swimmers entered in the June classes received ten lessons while those registered for the July and August classes received twelve lessons. All lessons were of half an hour duration and were given at all pools. Classes ranged from Red Cross "Beginners" through to the Royal Life Saving Society Award of Merit. Preliminary discussion with the Y.W.C.A., the Y.M.C.A., the Red Cross Society Swimming and Water Safety Branch and the Royal Life Saving Society ensured co-ordination with other instructional programs and enabled the Recreation Division to enlist the help of qualified leadership. Much credit is due to these organizations for their assistance. More than 1,500 children and adults participated in the instructional program.

COMMUNITY ASSOCIATIONS: A start was made in the task of developing closer relationships with the many Community Associations in Calgary. Divisional staff attended many Association meetings to promote better understanding, co-operation, and co-ordination. The Division also assisted in the development of the Federation of Calgary Communities through attendance and participation in the organizational meetings that led to the formation of the Federation.

Meetings of the Calgary Community Recreation Association were attended by staff members of the Division and efforts were made to ensure the effective integration and co-operation of the C.C.R.A. and the F.C.C. through the preparation of organizational charts delineating the areas of responsibility.

To date, the work with the Community Associations has just started. However, some notable progress toward improved relationships has been achieved. Further progress in this work of assisting and encouraging the growth of recreation in the Associations is promising. A great wealth of talent, industry and initiative is presently active in the Community Associations. It is the duty of the Recreation Division to assist the Associations in all possible ways.

RECREATION FACILITIES: A major concern of the Division, during the past year, has been the provision of recreation facilities for the people of Calgary.

Ball Fields and Stadia

Mewata Stadium was made available for 128 different events in 1961, including Soccer, Intermediate, Junior, Mighty-Mite and High School Football; Track and Field, the Rotary Bar-B-Que and Band Marching practices. Renfrew, Broadview and Highwood Parks were used for Soccer, English Rugger and Field Hockey games. Parks and school diamonds were allocated for league play in Fastball and Baseball. In short, every effort was made to ensure that all those wishing to participate in these sports had a place to play.

Recreation Hall

Mewata Recreation Hall saw increased use this year with various groups using the hall every week night for their activities. Bands, the Kennel Club, the Calgary Archers and the Coin Club were regular users of the hall.

Ice Rinks: The provision of skating facilities constituted another important part of Divisional Activity. Over seventy boarded hockey rinks were dismantled in the Spring, repaired, stored and re-assembled in the Fall for Community Associations. Goal frames and scrapers were also supplied to the Communities. In addition, some 120 pleasure skating areas were provided either to the Community Associations or were established in other areas. The Recreation Division supplied one or more basic floods for the Community rinks and assisted with additional flooding or snow removal on request. Rinks established in other areas were maintained by Division personnel who, also, were responsible for the entire operation of five boarded rinks and the South Calgary Artificial Rink. The City operated rinks were available to leagues on a permit basis.

Swimming Pools: The opening of the summer season saw five outdoor pools being operated by the Division. One more, the Acadia Pool, was opened at the beginning of August. New departures in pool operation this year included the previously mentioned swimming instruction program and the establishment of special hours for adults. Adult hours proved very popular and were established either at noon hour (at Bridgeland) for business people or between 9:00 P. M. and 10:00 P. M. Altogether, a quarter of a million swimmers entered the pools in 1961.

Recreation Construction: Much of the work of the Division was handled by the Recreation Construction crews who built new backstops at ten locations, installed playground equipment at five locations and were responsible for the dis-mantling, repairing and erection of the boarded rinks. In addition, these crews carried out the marking of fields, the cleaning and flooding of rinks and the transporting of supplies and materials to the pools, recreation centres, playgrounds and the day camp. The incorporation of this section of the Parks Department's work into the Recreation Division has proven to be extremely valuable.

CONCLUSION: It was stated at the beginning of this report that progress had been made toward the achievement of the Recreation Division's objective of providing greater opportunity for the people of Calgary to participate in wholesome, satisfying recreation. It is felt that this report gives some idea of the extent of this achievement. However, it is recognized that many needs have not yet been met and many people have not yet been served. The Recreation Division is dedicated to the fullest possible use of all its resources toward meeting these needs and serving these people. With the continued co-operation of the many individual groups and organizations who have helped in the past; the excellent contribution of the press, radio and television stations who have assisted in keeping the public informed of our services; and the fine co-operation of the Public and Separate School Boards, it is felt that the task is not too great and the citizens of Calgary will be served.

APPENDIX "A"

COMMUNITY ASSOCIATION & SPORTS ORGANIZATION MEETINGS

ATTENDED BY

THE SUPERVISOR OF ATHLETICS AND SPECIAL
EVENTS

Hockey Commission - Six

Hockey Schools - Four (Referees)

Hockey Schools - Coaching (C.C.R.A. 2, Forest Lawn 1 = 3)

Hockey - C.C.R.A. - Four

Table Tennis - Two

Volleyball - Three

Badminton - Four

Calgary Community Recreation Society - Six

Calgary Federation of Communities - Four

Ladies' Curling - One

Community Associations - Six

Soccer - One

Technical Advice - (Parkdale Church - Y.M.C.A.) - Two

Boys' Baseball - Four

Fastball - Four

APPENDIX "B"

MEWATA STADIUM

Summary of Stadium Events

	<u>Number of Events</u>	
	<u>1960</u>	<u>1961</u>
Track and Field Meets	16	18
Soccer	23	40
Mighty-Mite Football	3	9
Junior Football	9	12
Intermediate Football	2	2
Exhibition Football	1 (Stampeders)	1 (Cougars)
Junior High School Football	16	15
Senior High School Football	20	24
Rugger Association	-	4
Miscellaneous	<u>5</u>	<u>3</u>
	<u>95</u>	<u>128</u>

APPENDIX "C"

SWIMMING POOL ATTENDANCE

	<u>1960</u>	<u>1961</u>
South Calgary	57,428	67,005
Bowview	39,725	48,708
Mount Pleasant	51,155	54,076
Millican	21,363	21,505
Bridgeland	(x) 3,492	49,186
Acadia	-	(xx) 15,931
	<u>173,163</u>	<u>256,411</u>

(x) August 25 - September 11

(xx) August 4 - September 4

APPENDIX "D"

NATURAL ICE RINK INSTALLATION

Boarded Hockey Rinks

	<u>1959</u>	<u>1960</u>	<u>1961</u>
Community Association Rinks	55	71	80
City Operated Rinks	<u>5</u>	<u>5</u>	<u>5</u>
	60	76	85

Banked Pleasure Rinks

Community Association Rinks	59	60	64
City Maintained Rinks	<u>45</u>	<u>44</u>	<u>50</u>
	<u>104</u>	<u>104</u>	<u>114</u>

TOTAL SKATING AREAS

	<u>164</u>	<u>180</u>	<u>199</u>
--	------------	------------	------------

APPENDIX "E"

1961 PLAYGROUND PROGRAM

24 Playgrounds

Regular Programs:

Total Playground Attendance	71,357
Total Participation (in various activities)	148,759

Special Events:

Track and Field Meet	1,500
Swim Meets	1,200
Craft Show	300
Volleyball and Softball	550
Cheer Leader Competition	250

CONSTRUCTION AND SERVICES DIVISION - W. GARNETT, SUPERVISOR

CONSTRUCTION: An extensive program of new construction was carried out between early spring and late fall on areas generally categorized as Recreation and Community Parks, Decorative Parks, New Subdivision Boulevards, Road Separation Strips and Sidebanks.

Work on twenty Recreation and Community parks went forward, with some being completed from the previous year and others still to receive final treatment next year. Some of the major areas being developed are Stanley Park, Haysboro Recreation Park, Westgate Community Park, Chicoutimi Recreation Park, Glenmore Athletic Field and the Glenmore Recreation Park.

Fifteen Decorative Parks were developed to the point where all grass was ready for the first cutting. These comprised a total area of more than eleven acres. The grass will be maintained by the District crews, and further decorative features such as shrub and flower beds and trees will be added as feasible, during future seasons.

Loaming of the Blackfoot Trail interchange and the sidebanks of the bypass road to the north was carried out, with the same treatment being given to the two and one half mile portion of the sixth street east bypass. Preliminary landscaping was done along 66th Avenue, southward from sixth street to the South line of the C. P. R. The Centre boulevards on the sixth street bypass were prepared for tree planting in the spring.

A park like appearance was given to the new reservoir area at 26th Street and 26th Avenue, S.W. by loaming and seeding the area to grass.

In the subdivisions of Charleswood, Acadia, Haysboro and Westgate a total of seven and one half miles of boulevards were seeded to grass. The developers in these areas are required to loam the boulevards and the grassing and tree planting is carried out by this Department.

During the late fall of 1960 and the early spring of 1961, tree holes were dug in residential boulevards under the Winter Works program in preparation for the annual tree planting campaign in new districts. Between April 15th and May 31st this year, there were more than 6,500 trees and shrubs planted in these boulevards.

Also under the Winter Works program considerable work was accomplished in the preparation of picnic areas at both Glenmore Park and the Pearce Estate. While clearing at the Pearce Estate, more than 1,000 dogwood shrubs were obtained and transferred to the nursery for later use in parks and boulevards.



TREES FOR BOULEVARD PLANTING



SIGN PAINTING



LAND DEVELOPMENT...BEFORE & AFTER

WEED CONTROL: Weed control by Department crews commenced on 31st May and continued until late October. The systematic cutting of the natural growth on large areas of City land in various locations was carried out in order to prevent these areas from becoming a source for complaints. Cutting of all growth along major thoroughfares, and a special clean-up along the Stampede parade route was carried out.

Chemical treatment for the control of dandelions and weeds in the Cemeteries, Golf Course and most major parks, for a total of over 500 acres was done by contract and was effective. Two Department spray units took care of all other parks and City properties requiring chemical treatment, using a total of 275 gallons of 2-4D.

There were 433 private properties inspected as a result of complaints and 164 of this number were satisfactorily cleaned up after only a verbal warning by the inspector. There were 153 written notices given. Of this number 63 required a further letter of warning and 44 were sent a second letter before satisfactory remedial action was taken. It was found that 116 locations inspected were unjustified complaints.

BUILDINGS AND FENCING: The erecting and repairing of fences is carried out in the very early spring and late fall by the main weed control crew. Repairs to fences at twenty six locations was effected and erection of both chain link and post and cable fencing was completed at Hounsfield Heights Park, Spruce Cliff, King George, 16th Avenue and 8th Street, S.W., 47th Avenue and 17th Street, S.W., Manchester Community Park, Bridgeland Community Park, Stanley Park and Bowness Park.

New buildings completed during the year included the Acadia Swimming Pool which was opened in August, an additional picnic shelter at St. Patrick's Island Camp Ground, Restrooms at Glenmore Park, Picnic Shelter at Sandy Beach and an extension over the boiler house at the City Greenhouses. Four used Motel buildings were obtained from 16th Avenue, N. W., and installed as change rooms at Shouldice Park, Stanley Park, a pro-shop at the Golf Course, and a clubhouse for the Caladonian Football Club at Mewata practice field. Installation of the new boilers for the greenhouses was started as a Winter Works project in December.

The old Stampeder dressing rooms at Mewata were dismantled and the lumber salvaged. Re-alignment of some of the fencing at Mewata was carried out as a result of the change in the one-way traffic pattern past this location. Band Stands were set up as required at Bowness Park, St. George's Island and Riley Park.

PLUMBING SECTION: With the continued development of new park areas, this section of the Construction Division is becoming responsible for the maintenance of more and more water systems in parks and buildings each year. The shutting off and draining of surface lines throughout the parks in the fall, and the task of turning the water back on in the spring is a major task. Portable aluminum pipe for watering large areas is being used and will be relied on to eliminate the need for permanent shallow surface lines in new areas where this type of watering is feasible. Another new feature is the use of pop-up sprinkler systems which eliminates the use of hoses and portable sprinklers.

The newly built restrooms at Bowness Park and the water facilities at the concession building were connected to the Bowness town water system by our division. Sewer and water lines were also connected to the new restrooms at the Pearce Estate. Some 25,000 feet of pipe varying from 3/4" to 4" lines was installed during the year for new lines and in repairing broken lines. Considerable work is also done for other Departments by the Construction Division, with over 70 work orders being received during the year and representing a value of \$105,625.00

REPAIR SHOP: The maintenance of the hundreds of hand tools, the scores of hand and power mowers, and the heavier equipment used in the parks maintenance and construction operations kept this section of the Construction Division extremely busy all during the year.

Looking back at the beginning of this repair section reveals that one craftsman was engaged to do this work about the year 1916. In the late twenties a few power mowers were introduced for cemetery and boulevard maintenance. By 1933 all horse drawn grass cutting equipment had been replaced by motor operated units and a second man was employed for mechanical maintenance.

Since that time, as more and more parks have developed, the quantity of tools and equipment has increased until at the present time there are in use six landscaping tractors, two back-hoes for grave digging, one front end loader, one cat tractor, one golf course tractor, and one Parkmaster seven unit lawn tractor. Other smaller equipment includes ten Graveley Tractors with attachments, fourteen Professional mowers, twenty tree Park Special mowers, seven motor scythes, twenty-five power mowers of various types, and one hundred and twenty-five hand lawn mowers.

To maintain and service all these units together with the scores of various hand tools used, there are six repair and service personnel in the shop, plus a foreman and two storekeepers.

Every effort is made to see that all equipment is kept in good operating condition at all times and that repairs are economically made. Early replacement of the cat tractor and overhead loader with heavier equipment is indicated as repair costs on these units are increasing. In purchasing new units it is important that exact specifications based on equipment with known demonstrated performance be used in order to ensure that the best machine for our particular requirements will be obtained.

I wish at this time to express my sincere appreciation to all employees within the division, to Mr. Boothman and the office staff, and to the supervisors, foremen and employees of the other divisions of the Department for their co-operation and help during the past year.

ADMINISTRATIVE DIVISION - M. BARRACLOUGH, ADMINISTRATIVE ASSISTANT

BUDGET REPORT: It will be noted in the following statements that total expenditures charged to the Maintenance budget exceeded appropriations by an amount of \$30,618.55. This was caused by expenditures having to be made which were not provided for in the budget.

At the time that the budget was passed it was not yet decided that the various concessions at Bowness Park were to be operated by the Department, consequently no funds were appropriated to cover this expense. With the decision reached that the Tourist and Convention Association could not operate the Concessions it was necessary to purchase equipment and provide staff to operate these facilities.

Purchase of kitchen equipment for the food concession was authorized and amounted to \$5,689.00. Wages for staff to operate the boats, miniature golf course and merry-go-round amounted to \$6,297.40.

The Acadia Swimming Pool was not expected to be in operation during the summer but was completed in time to be operated during August. Expenses in this regard amounted to \$5,855.14.

Settlement of wage negotiations with workers resulted in payment of wage and salary adjustments for a total of \$8,440.55.

It was decided at the end of the year to set up a reserve for improvements at the Golf Course. Consequently, the difference between expenditures and revenue at the Course was transferred to a reserve which resulted in a charge of \$13,354.38 being set against the budget.

The total of all these additional items amounts to \$39,636.47. Taking these things into consideration therefore, it can be said that the Department operated within the budget appropriation.

With the continued expansion of the City each year, there are more parks, buildings and facilities developed and requiring maintenance. Additional men, equipment and materials are required to accomplish this work, and the result is a steadily increasing budget.

Supervisors and Foremen are being reminded at every opportunity that they must keep expenses down and we feel that they are accomplishing a great deal with the resources at their disposal. In fact, we are continually being told by Foremen that they are hard-pressed to take care of the work required.

It has been pointed out elsewhere in the report by the Superintendent that the amount provided per acre for maintenance is actually less at this time than a few years ago. This is attributed to a departure from intensive horticultural and decorative development. Also involved I am sure are improved methods brought about by improved machines and organization.

During the predicted continued growth of the City the demand for more funds to provide for the maintenance and operation of the facilities administered by this Department will continue and in order to effectively contain the upward spiral of expenditures it will be essential to develop the awareness of all supervisory personnel to ensure that maximum results are obtained in relation to dollars spent.

An increase of more than \$32,000.00 in total revenues over the amount estimated is recorded for 1961. This is in spite of the revenue from the Golf Course being some \$8,400.00 below the estimate. Reason for this drop in revenue at the Golf Course was a combination of several poor weekends due to bad weather, and the increased use of the course by junior players holding season tickets. It would seem advisable because of the low cost of the season ticket that juniors should be restricted to weekday play only. Of course they would be allowed to play weekends and holidays upon payment of the regular green fee.

Main items of revenue affecting the increase of actual over estimated was the revenue from Bowness Park and the Swimming Pools. No estimate was included in the budget for Bowness due to uncertainty with regard to Department operation of the park at the time the budget was passed. Consideration of the offer of the Calgary Tourist and Convention Association to operate the park was not completed at budget time which accounted for this omission.

Swimming pool revenues were greater than estimated mainly due to the opening of the new Acadia pool early in August which was not anticipated when the budget was prepared. A slightly higher return from the other five pools generally accounted for the rest of the higher revenue picture.

The St. Patrick's Island Camp Ground showed a record amount of revenue and during Stampede week a second overflow camp was established at the Pearce Estate. With the increasing popularity of Camping among vacationers there is a good reason to expect that provision of more camping facilities will be required. The Pearce Estate site seems a logical one, and with the provision of sanitary facilities there last year, all that is now required to make it acceptably serviceable as a camp ground is some electric lighting and gravelling and oiling of the roads.

Following are detailed statements of expenditures and revenues affecting the various functions of the Department for the year 1961.

STATEMENTS FOR 1961 EXPENDITURES AND REVENUES

PARKS AND CEMETERIES DIVISION

GENERAL ADMINISTRATION

Appropriation: \$29,080.00
Expenditures: \$30,642.77

Salaries	\$25,986.50	
Travelling Expense	35.55	
Private Car Allowance	450.00	
Rental - Passenger Cars	330.00	
Telephones, Telegrams	319.29	
Subscriptions and Association Dues	56.08	
Postage	215.13	
Printing, Stationery and Office Supplies	2,351.07	
New Equipment - Office Machines	243.78	
Furniture and Furnishings	503.55	
Staff Development and Training	151.82	\$30,642.77

ST. GEORGE'S ISLAND ZOO

Appropriation: \$ 90,639.00
Expenditures: \$105,401.41

Salaries	\$ 6,060.00	
Wages	51,445.56	
Private Car Allowance	360.00	
Rental - Equipment and Services	101.25	
Rental - City Owned Vehicles	489.41	
Maintenance and Repair - Buildings and Property	2,398.08	
Maintenance and Repair - Facilities	12,441.48	
Utilities	16,554.69	
Telephones	110.30	
Feed Supplies	13,996.75	
Sundry Materials	1,443.89	\$105,401.41

PARK DEPARTMENT

Appropriations 447,937.00
 Expenditures 463,286.23

	Salaries	Wages	Equipment Rental	Truck Rental	Mtc. Bldg. & Property	Mtce. of Facilities	Utilities	Tele- phones	Policing	Hydrant Water	Agricultural & Horticultural Materials	Sundry Materials	New Equipment	Total
No. 2 North West	4,021.38	64,934.49	6,872.28	5,261.94	2,372.35	4,007.11	286.51	93.00		3,375.00	9,096.95	308.36		100,625.37
No. 3 North Hill	3,705.04	45,084.91	4,711.20	3,686.59	1,699.43	5,657.63	470.37	78.00		2,250.00	5,178.92	94.19		72,616.28
No. 4 North & East including Reader Rockery	3,668.48	54,941.79	5,227.58	3,948.44	3,028.36	2,965.97	122.93			2,437.44	5,537.68	408.15		82,286.32
No. 5 South West	3,426.80	48,659.89	5,376.20	4,148.85	1,549.45	2,132.29	204.86	75.00		2,250.00	7,248.35	136.43		75,208.12
No. 6 Central South	3,668.08	51,645.62	6,914.54	4,667.56	1,182.20	3,511.12	849.83	75.00		3,375.00	9,131.92	183.53		85,204.40
No. 7 Bowness Park	5,931.62	18,431.70	1,079.30	236.14	830.35	2,302.87	1,069.47	70.75	3,323.21		292.55	2,332.01	5,802.78	41,702.75
New Equipment													6,120.49	6,120.49
	24,421.40	283,698.40	30,181.10	21,949.52	10,662.14	20,576.99	3,005.93	391.75	3,323.21	13,687.44	36,486.37	3,462.67	11,923.27	463

TREE PLANTING ON BOULEVARDS

Appropriation: \$30,200.00
Expenditures: \$29,678.92

Wages	\$ 8,391.41	
Rental - Equipment and Services	382.57	
Rental - City Owned Vehicles	625.55	
Rental - Vehicles Not City Owned	1,648.00	
Agricultural and Horticultural Materials	<u>18,631.39</u>	\$ 29,678.92

WEED CONTROL

Appropriation: \$36,950.00
Expenditure: \$38,581.16

Wages	24,294.66	
Rental - Equipment and Services	4,461.47	
Rental - City Owned Vehicles	2,793.83	
Weed Spraying	4,390.00	
Sundry Materials	1,369.36	
New Equipment	<u>1,271.84</u>	\$ 38,581.16

GOLF COURSE

Appropriations: \$43,076.00
Expenditures: \$40,174.32
Revenues: \$53,528.70

Salaries (Steward)	\$ 3,000.00	
Wages	22,674.97	
Rental - Equipment and Services	4,715.76	
Rental - City Owned Vehicles	1,193.60	
Maintenance and Repair - Buildings and Property	511.12	
Maintenance and Repair - Facilities	1,312.59	
Utilities	2,381.14	
Telephone	98.10	
Agricultural and Horticultural Materials	2,842.45	
Sundry Materials	936.39	
New Equipment	<u>508.20</u>	\$ 40,174.32

Contribution to Reserve for improvements 13,354.38

\$ 53,528.70

GOLF COURSE REVENUE

GREEN FEES

928 Junior @ \$.75	\$ 696.00	
100 Junior @ 1.00	100.00	
7,444 Senior @ 1.00	7,444.00	
9,339 Senior @ 1.50	14,008.50	
32,822 9 Holes @ .60	<u>19,693.20</u>	\$ 41,941.70

SEASON TICKETS

Gents (177)	\$ 6,195.00	
Ladies (53)	1,325.00	
Junior (264)	3,168.00	
Man and Wife (14)	<u>770.00</u>	\$ 11,458.00

<u>LOCKER RENTS</u>	\$ 129.00	\$ 129.00	\$ 53,528.70
---------------------	-----------	-----------	--------------

ST. PATRICK'S ISLAND CAMP GROUND

Appropriation: \$ 8,971.00
Expenditures: 9,356.93
Revenues: 10,176.85

Salaries	\$ 4,837.50	
Wages	152.93	
Rental - Equipment and Services	6.21	
Rental - City Owned Vehicles	33.55	
Maintenance and Repair - Buildings and Property	711.17	
Maintenance and Repair - Facilities	991.09	
Utilities	1,915.42	
Telephone	23.00	
Sundry Materials	<u>686.06</u>	\$ 9,356.93

CAMP GROUND REVENUE

Registrations	\$ 9,780.00	
Trailer plug-ins	251.00	
Coin meters - hot plates	<u>145.85</u>	\$ 10,176.85

CEMETERIES

Appropriation: 175,389.00
Expenditures: 164,132.21

	Salaries	Wages	Private Car All'ce	Transit Tickets	Equip. Rental	Truck Rental	Mtce. Bldg. etc.	Mtce. Facilities	Utilities	Tele-phones	Hydrant Water	Agricultural & Horticultural Materials	Sundry Materials	New Equipment	Perp. Care Interest Credits	Totals
Union	6,797.86	29,359.08	360.00		3,470.48	894.12	183.13	784.23	291.72	78.80	1,500.00	800.97	532.89		Cr. 4,421.67	40,631.61
Burns-land		29,483.01			4,922.46	807.97	636.62	618.07			750.00	1,181.04	23.50		Cr. 8,025.06	30,397.61
Queen's Park	6,584.00	51,167.42		35.00	8,689.77	2,386.65	101.49	2,301.88	374.11	99.00	1,500.00	2,219.14	62.30	379.44	Cr. 13,303.68	62,596.52
St. Mary's		15,532.17			2,721.65	590.70		1,562.11			375.00	941.56	222.92		Cr. 3,582.56	18,363.55
Chinese		2,700.92			527.94	125.44	102.95	22.33			187.56	285.88			Cr. 422.53	3,530.49
New Equipment														8,612.43		8,612.43
	13,381.86	128,242.60	360.00	35.00	20,332.30	4,804.88	1,024.19	5,288.62	665.83	177.80	4,312.56	5,428.59	841.61	8,991.87	Cr. 29,755.50	164,132.21

Cemetery Revenues

Grave Fees	Grave Digging	Non. Res. Fees	Returf	Greens & Device	Late Funerals	Disinterments	Spec. Mtce.	Monument Fees	Transfers	Holiday Fee	Total	Perpetual Care Recd
2,716.00	47,600.00	340.00	4,124.50	2,460.00	573.00	305.00	1,103.15	3,757.50	40.00	49.60	\$63,068.75	\$64,483.00

RECREATION DIVISION

ADMINISTRATION

Appropriations: \$26,081.00
Expenditures: \$26,276.60

Salaries	\$ 21,055.38	
Private Car Allowances	2,240.00	
Utilities	116.77	
Telephones	707.35	
Postage	265.97	
Printing, Stationery and Office Supplies	1,053.93	
Sundry Materials	87.52	
Furniture and Furnishings	440.00	
Staff Development and Training	<u>309.68</u>	\$ 26,276.60

STADIUM

Appropriation: \$18,664.00
Expenditures: \$17,648.90

Wages	\$ 11,293.88	
Rental - Equipment and Services	834.00	
Rental - City Owned Vehicles	280.38	
Maintenance and Repair - Buildings and Property	844.99	
Maintenance and Repair - Facilities	1,978.94	
Utilities	2,248.60	
Telephone	70.90	
Recreation Supplies	69.44	
Agricultural and Horticultural Supplies	242.67	
Sundry Materials	<u>807.85</u>	\$ 18,671.65
Less Credit		
<u>Flood Light Fees</u>		<u>1,022.75</u>
		\$ 17,648.90

RENTREW BALL PARK

Appropriation: \$ 7,549.00
Expenditures: \$ 5,684.24

Wages	\$ 4,218.08	
Rental - Equipment and Services	370.87	
Rental - City Owned Vehicles	65.42	
Maintenance and Repair - Buildings and Property	281.06	
Maintenance and Repair Facilities	259.05	
Utilities	246.84	
Telephones	39.00	
Sundry Materials	203.92	\$ 5,684.24

BROADVIEW SOCCER PARK

Appropriation: \$ 4,374.00
Expenditures: \$ 4,307.32

Wages	\$ 3,495.89	
Rental - Equipment and Services	151.95	
Rental - City Owned Vehicles	13.43	
Maintenance and Repair - Buildings and Property	528.16	
Maintenance and Repair Facilities	35.34	
Utilities	95.64	
Agricultural and Horticultural Materials	178.14	
Sundry Materials	202.27	\$ 4,700.82

<u>Less Credit</u>		
Flood Light Fees		<u>393.50</u>
		\$ 4,307.32

ARTIFICIAL ICE RINK

Appropriation: \$10,430.00
Expenditures: \$ 9,940.59

Wages	\$ 5,114.84	
Rental - Equipment and Services	213.47	
Rental - City Owned Vehicles	2.98	
Maintenance and Repair - Buildings and Property	500.47	
Maintenance and Repair - Facilities	624.23	
Utilities	3,127.60	
Telephone	36.80	
C.C.R.A. Hockey	317.00	
Sundry Materials	3.20	\$ 9,940.59

NATURAL ICE RINKS

Appropriations: \$91,865.00
Expenditures: \$97,247.06

Wages	\$ 43,309.71	
Rental - Equipment and Services	4,487.05	
Rental - City Owned Vehicles	6,541.45	
Maintenance and Repair - Facilities	8,892.34	
Utilities	646.89	
Telephones	71.50	
Hydrant Water	2,000.00	
Community Floodlighting	26,390.00	
Sundry Materials	97.28	
Agricultural & Horticultural Materials	2,600.50	
New Equipment	2,210.34	\$ 97,247.06

PLAYGROUNDS

Appropriations: \$48,516.00
Expenditures: \$41,753.50

Salaries	\$ 6,089.64	
Wages	27,154.32	
Private Car Allowances	940.00	
Rental - Equipment and Services	1,112.77	
Rental - City Owned Vehicles	1,808.16	
Maintenance and Repair - Equipment	1,873.78	
Maintenance and Repair - Facilities	692.80	
Recreation Supplies	1,643.08	
Sundry Materials	421.05	
Staff Development and Training	17.90	\$ 41,753.50

SWIMMING POOLS

Appropriation: 90,616.00
Expenditures: 101,478.37

	Wares	Vehicle Rental	Mtce. Bldgs.	Mtce. Equip.	Mtce. Facilities	Utilities	Telephones	Laundry Service	Sundry Materials	Chemicals	Clothing & Incidentals	Totals
Mount Pleasant	13,608.24	13.90	436.85	159.89	1,867.96	2,206.44	27.05	359.86	302.77	897.95	75.02	19,955.93
South Calgary	14,505.87	14.74	146.82	72.46	322.54	3,136.17	62.20	80.99	393.24	1,265.82	50.01	20,050.86
Bowview	14,035.15	16.74	240.11	89.23	1,435.06	1,501.69	45.50		253.66	1,146.41	30.26	18,793.81
Millican	13,289.84	16.74	443.17	260.36	668.74	2,270.43	25.05		282.58	1,070.26	108.76	18,435.93
Bridgeland	13,326.37	15.76	7.01	31.59	231.07	3,276.32	23.55		242.63	1,183.89	48.51	18,386.70
Acadia	4,097.21	14.26	16.06	214.71	23.90	620.58	15.90	12.80	575.87	263.85		5,855.14
	72,862.68	92.14	1,290.02	828.24	4,549.27	13,011.63	199.25	453.65	2,050.75	5,828.18	312.56	\$101,478.37

Attendance & Revenue

Pools open from May 20 to September 4 inclusive
Note--Acadia open from August 5 to September 4 inclusive

	Children @ 10¢	Teens @ 15¢	Adults @ 35¢	Lessons Junior @ \$2.00	Lessons Adult @ \$4.00	Towels @ 10¢	Suits @ 15¢	Suits @ 25¢	Revenue
Mount Pleasant	27,688	19,224	7,164	371	33	312	359	165	\$ 9,160.10
South Calgary	39,201	20,779	7,025	574	43	410	416	359	\$11,008.85
Bowview	21,327	20,204	7,177	406	10	245	275	145	\$ 8,629.25
Millican	11,567	5,262	4,676	187		205	173	155	\$ 4,041.80
Bridgeland	20,612	15,722	12,852	213	5	862	427	460	\$ 9,621.00
Acadia (1 mth)	9,980	4,117	1,834	86	1	8	48	25	\$ 2,447.70
	130,375	85,308	40,728	1,837	92	2,042	1,698	1,309	
	<u>\$13,037.50</u>	<u>\$12,796.20</u>	<u>\$14,254.80</u>	<u>\$3,674.00</u>	<u>\$368.00</u>	<u>\$204.20</u>	<u>\$254.70</u>	<u>\$327.25</u>	<u>\$44,916.65</u>

RECREATION CENTRES

Appropriation: \$37,504.00
Expenditures: \$33,204.67

Salaries	\$12,150.03	
Wages	10,086.59	
Private Car Allowances	1,710.16	
Rental - Buildings and Property	7,529.78	
Rental - City Owned Vehicles	83.84	
Maintenance and Repair - Equipment	1,082.28	
Recreation Supplies	551.55	
Sundry Materials	<u>10.44</u>	\$33,204.67

MEWATA RECREATION HALL

Appropriation: \$ 3,534.00
Expenditures: \$ 5,533.38

Wages	\$ 3,730.83	
Maintenance and Repairs - Buildings and Property	304.68	
Utilities	956.43	
Telephone	123.90	
Sundry Materials	<u>417.54</u>	\$ 5,533.38

SUPPORTING UNITSCOST OF OPERATION

	<u>ESTIMATED</u>	<u>ACTUAL</u>
Repair Shop and Equipment Pools	\$108,500.00	\$105,571.23
Plumbing Shop	75,000.00	93,882.66
Nursery	45,500.00	47,560.61
Greenhouse	16,000.00	15,118.34
Garden Material Stores	56,000.00	93,132.46
	<u>\$301,000.00</u>	<u>\$355,265.30</u>

SUMMARY OF APPROPRIATIONS AND EXPENDITURESPARKS AND CEMETERIES DIVISION

	<u>APPROPRIATION</u>	<u>EXPENDITURE</u>
Administration	\$ 29,080.00	\$ 30,642.77
Parks Districts	447,937.00	463,768.23
St. George's Island Zoo	90,639.00	105,401.41
Golf Course	43,076.00	53,528.70
St. Patrick's Island Camp Ground	8,971.00	9,356.93
Tree Planting	30,200.00	29,678.92
Weed Control	36,950.00	38,581.16
Cemeteries	175,389.00	164,132.21
Development of Community and Decorative Parks	134,700.00	128,528.59
	<u>\$996,942.00</u>	<u>\$1,023,618.92</u>

SPORTS AND RECREATION DIVISION

Administration	\$ 26,081.00	\$ 26,276.60
Stadium	18,664.00	17,648.90
Renfrew Ball Park	7,549.00	5,684.24
Broadview Soccer Park	4,374.00	4,307.32
Swimming Pools	90,616.00	101,478.37
Artificial Ice Rink	10,430.00	9,940.59
Natural Ice Rinks	91,865.00	97,247.06
Playgrounds	48,516.00	41,753.50
Recreation Centres	37,504.00	33,204.67
Mewata Recreation Hall	3,534.00	5,533.38
	<u>\$339,133.00</u>	<u>\$343,074.63</u>

SUMMARY

Parks and Cemeteries Division	\$996,942.00	\$1,023,618.92
Sports and Recreation Division	339,133.00	343,074.63
	<u>\$1,336,075.00</u>	<u>\$1,366,693.55</u>

GENERAL REVENUE STATEMENT FOR 1961

	<u>ESTIMATED</u>	<u>ACTUAL</u>
Golf Course	\$ 62,000.00	\$ 53,528.70
Cemetery Fees	60,000.00	63,068.75
Miscellaneous Fees	-	994.00
Ice Rink Fees	3,700.00	3,108.25
Swimming Pool Fees	3,200.00	44,916.65
Stadium and Ball Park Receipts	2,500.00	3,669.14
Sundry Rentals (Mewata Rec Hut)	1,000.00	1,861.75
Bowness Park	-	21,393.17
St. Patrick's Island Camp Ground	9,500.00	10,176.85
	<u>\$ 170,700.00</u>	<u>\$ 202,717.26</u>

CAPITAL BUDGET - EXPENDITURE

	<u>APPROPRIATION</u>	<u>EXPENDITURE</u>
Land Development, Regional and Athletic Parks	\$ 104,154.00	\$ 109,838.82
Land Development, Queen's Park Cemetery	6,500.00	7,157.15
Glenmore Park Development	35,600.00	35,094.02
Fencing Parks and Cemeteries, etc.	9,000.00	9,337.33
New Swimming Pool - City Share	60,000.00	55,163.01 <i>110,326.02</i>
New Boarded Hockey Rinks	-	491.28
Glenmore Nursery	5,000.00	6,288.07
New Buildings	60,500.00	57,159.05
Playground Equipment	12,000.00	5,968.06
Picnic Tables	-	2,103.98
	<u>\$ 292,754.00</u>	<u>\$ 288,600.77</u>