

Calgary



Bend in the Bow.

Welcome!

Grand Vision

October 13, 2016
4–8pm

Alexandra Centre



Vision

Bend in the Bow is a collection of parks that tell stories through nature, culture, and education.

The land that maps out the Bend in the Bow has a rich, diverse past. This area has been in constant flux for centuries, carving out a story of Calgary's past, present, and future.

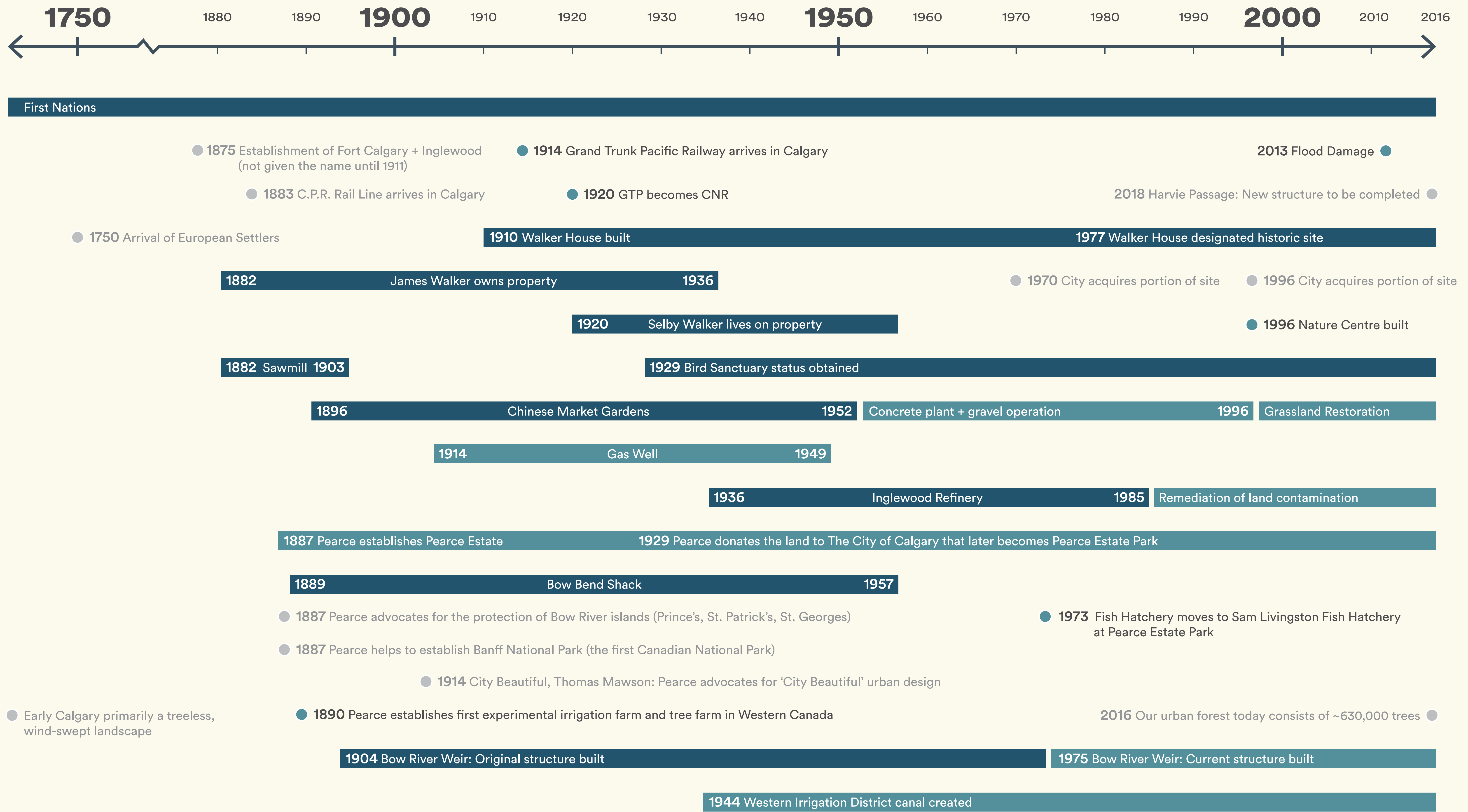
Before Europeans arrived, this landscape was largely influenced by floods, fires, wildlife, and First Nations (refer to “Stories of the Land” board). When Colonel Walker arrived, he built a sawmill and a homestead on what was then the outskirts of Calgary. An oil refinery was built beside Walker’s farmland, and the City eventually surrounded the site. Shortly after Walker’s arrival, William Pearce would build his estate, experiment with urban forestry, and help agriculture grow roots by promoting irrigation. Despite these shifts in cultural attitudes, nature has been actively conserved through time.

Our goal in this project is to maintain the balance of nature and culture, and inspire future stewards to conserve the heritage of these parks for tomorrow’s generations.



Stories of the Land

The landscape tells the stories of how this site has evolved over time, and the role of conservation in managing our natural and cultural history for future generations.



Pearce Estate Park

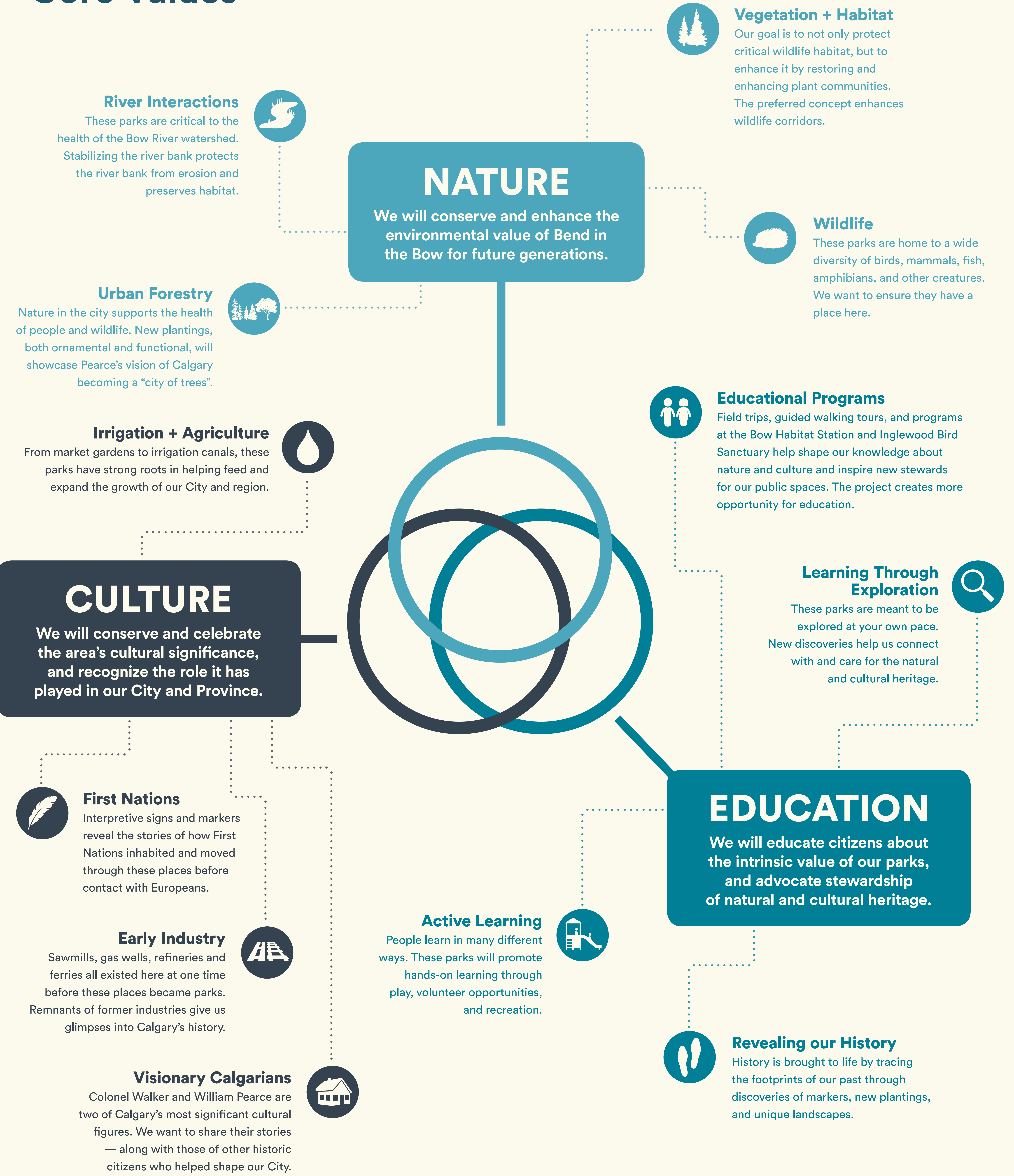


Inglewood Bird Sanctuary + Wildlands





Core Values



NATURE
We will conserve and enhance the environmental value of Bend in the Bow for future generations.

River Interactions
These parks are critical to the health of the Bow River watershed. Stabilizing the river bank protects the river bank from erosion and preserves habitat.

Vegetation + Habitat
Our goal is to not only protect critical wildlife habitat, but to enhance it by restoring and enhancing plant communities. The preferred concept enhances wildlife corridors.

Wildlife
These parks are home to a wide diversity of birds, mammals, fish, amphibians, and other creatures. We want to ensure they have a place here.

Urban Forestry
Nature in the city supports the health of people and wildlife. New plantings, both ornamental and functional, will showcase Pearce's vision of Calgary becoming a "city of trees".

Educational Programs
Field trips, guided walking tours, and programs at the Bow Habitat Station and Inglewood Bird Sanctuary help shape our knowledge about nature and culture and inspire new stewards for our public spaces. The project creates more opportunity for education.

CULTURE
We will conserve and celebrate the area's cultural significance, and recognize the role it has played in our City and Province.

Learning Through Exploration
These parks are meant to be explored at your own pace. New discoveries help us connect with and care for the natural and cultural heritage.

EDUCATION
We will educate citizens about the intrinsic value of our parks, and advocate stewardship of natural and cultural heritage.

First Nations
Interpretive signs and markers reveal the stories of how First Nations inhabited and moved through these places before contact with Europeans.

Early Industry
Sawmills, gas wells, refineries and ferries all existed here at one time before these places became parks. Remnants of former industries give us glimpses into Calgary's history.

Active Learning
People learn in many different ways. These parks will promote hands-on learning through play, volunteer opportunities, and recreation.

Revealing our History
History is brought to life by tracing the footprints of our past through discoveries of markers, new plantings, and unique landscapes.

Visionary Calgarians
Colonel Walker and William Pearce are two of Calgary's most significant cultural figures. We want to share their stories — along with those of other historic citizens who helped shape our City.



Parks that tell stories

The concept for Bend in the Bow unifies how people use the land—in the past, today, and in the future.

Pearce Estate Park An Engineered Environment

- » William Pearce was a visionary who lived here at the turn of the 20th century. His contributions to the city are recognized throughout the park.
- » Weirs, constructed wetlands, and man-made streams—this site has a long history of engineering nature.
- » Picnics, paddling and play—Pearce Estate Park offers a wide variety of active and passive recreational opportunities.

The Corridor Landscape in Motion

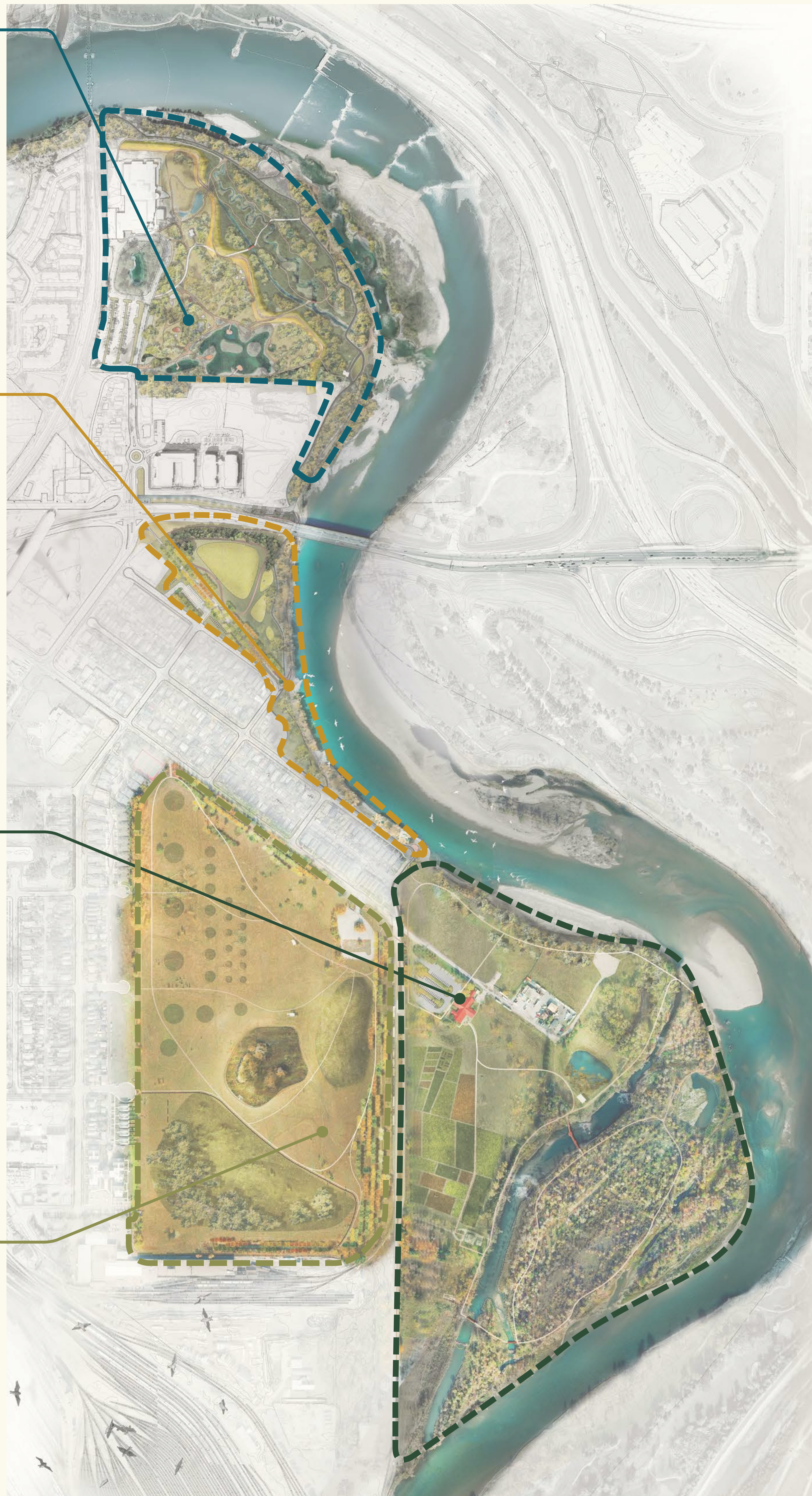
- » First Nations peoples travelled extensively through these lands; an interpretive walk recounts the stories of these peoples.
- » Grand Trunk Pacific Railway ran through this corridor. The new pathway delineates the rhythm of the railway a century ago.
- » The new arboretum showcases Pearce's contribution to Calgary's urban forests.
- » Increased vegetation and removal of lighting along the corridor enhances regional wildlife movement.

Inglewood Bird Sanctuary Homesteads and Habitats

- » As Canada's first federally protected urban bird sanctuary, the site continues to preserve necessary habitat to support breeding and nesting. The sanctuary continues to inspire research, education and stewardship activities.
- » Walker's homestead is one of the cultural cornerstones of Calgary. Our agricultural and industrial past is recognized at significant locations on the site.
- » The Chinese market gardens become a place to learn about Calgary's agricultural history.

Inglewood Wildlands Regenerating Nature

- » Demonstrations of restoration processes such as the phytoremediation forest allow visitors to observe active restorative techniques.
- » New formalized trails will minimize disturbances to habitat of local wildlife.





Pearce Estate Park: An Engineered Environment



Pearce Estate Park Gateway

Bow Habitat Station

Existing Washroom

Kids Can Catch Trout Pond

Picnic

Play

Pearce Memorial

Parking Enhancement

Pearce Estate Park Gateway

Existing Interpretive Wetland

Bow Passage Overlook

9 Pearce Monument

10 Harvie Passage

8 Wildlife Corridor + Coldwater Stream

Active Water Edge

7 Flood Protection Landform

11 Gravel Beach

New Washroom

Revised Regional Pathway

Potential Boat Launch

0 10 50m

Pearce Estate Park: An Engineered Environment





The Corridor: History in Motion



Park Entrance

1

History of Mobility Pathway

2

New Parking Lot + Drop Off

3

Active Use Nodes

4

Urban Forest Heritage Grove

5

Underpass Improvements

6

Tree Buffer

7

Revised Regional Pathway

Riverbank Stabilization

8

**Nature trail
(Setback from Swallows)**

Wildlife Corridor

Inglewood Bird Sanctuary Gateway

8

0 10 50m



The Corridor: History in Motion





Inglewood Bird Sanctuary: Homesteads & Habitats



1 Entrance Gateway

2 Nature Trail
(Setback from Swallows)

3 Nature Centre

4 Market Garden

5 Chinese Market Garden Traces

6 Homestead Trail

7 Walker's Experimental Tree Traces

8 Walker House Restored Hedge + Flower Beds (Native Species)

9 Fish Hatchery History

10 Lagoon Bridge

11 Existing Research Bird Banding Area

11 TD Outdoor Learning Centre

10 Lagoon Gate

9 Stormwater Pond

8 Wildlife Hides Location TBD

7 Jefferies Pond

6 Sawmill Structure

5 Floating Island in Lagoon

4 Riparian Forest



Inglewood Bird Sanctuary: Homesteads & Habitats



Inglewood Wildlands: Regenerating Nature



Entrance Gateway

Tank Traces

Community Entrance

Community Entrance

Community Entrance

Grassland Restoration + Habitat Protection

Separator Trench

1 Connection across railroad

Wildlands Parking Area

2 Existing Hill

3 Transformer Beacon

Wildlife Hides Location TBD

5 Hydrosere Wetland to Woodland

7 Phytoremediation on Display

Fence

Grand Trunk Pacific Railway Line

Inglewood Wildlands: Regenerating Nature



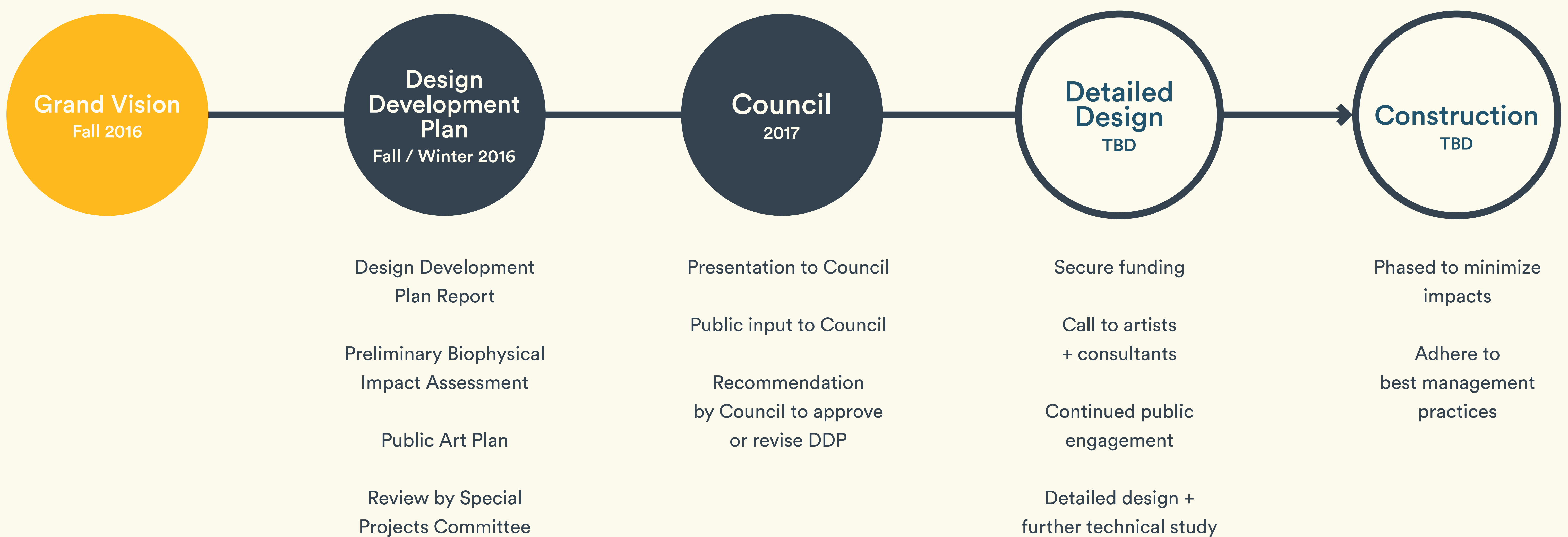


Stay Involved

The management of our natural areas is a shared effort. We hope you are inspired to share these ideas about the transformative power of nature and human ingenuity, and stay involved as the project progresses.

calgary.ca/bendinthebow

Next Steps



Thank You!

We would like to thank everyone for your time, feedback and commitment to this project over the past 18 months!

Collectively, your input has influenced how this plan has evolved.

Sponsor

The City of Calgary

Consultant Team

O2 Planning + Design, Prime Consultant
 Haddad Drugan, Public Art Consultant
 AMEC Foster Wheeler, Environmental Science & Remediation Expertise
 Athene Environmental, Wildlife Biology
 Dayle Soppet, Vegetation Ecology & EIA/BIA Expertise
 KWL, Water Resource Engineering
 Salix Resource Management, Ecology & Reclamation Expertise
 Robert Graham, Heritage Planner

Partners

Alberta Environment
 Bow Habitat Station
 Suncor Energy

External Stakeholders

Calgary Arts Development Mentorship
 Calgary Bird Banding Society
 Calgary Catholic School Board
 Calgary Disc Golf Association
 Calgary Heritage Initiative
 Calgary River Users Alliance
 Calgary River Valleys
 Chinese Market Gardener's Society
 Chinook Country Historical Society
 Inglewood Community Association
 Inglewood Wildlands Development Society
 Nature Calgary
 Parks Foundation Calgary
 Ward 9 Councillor

The Public

Over 500 people participated in the open houses, online surveys, and sounding boards.

4
Online Surveys

16
Stakeholder Workshops

2
Open Houses

3
Sounding Boards

250+
Emails + Letters

2500+
Total Comments