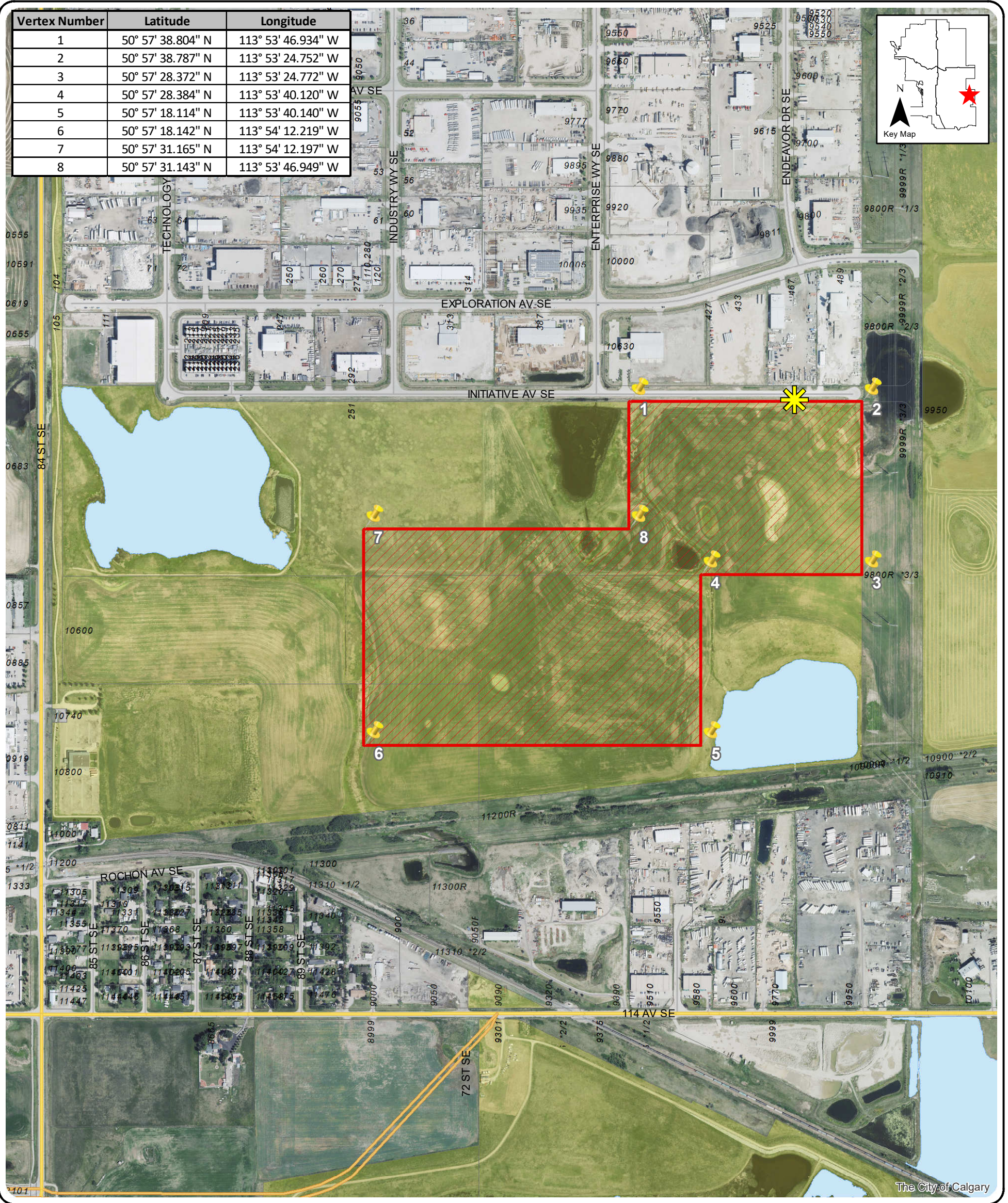
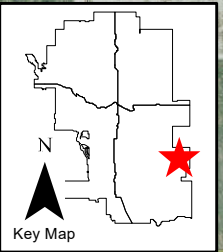


Vertex Number	Latitude	Longitude
1	50° 57' 38.804" N	113° 53' 46.934" W
2	50° 57' 38.787" N	113° 53' 24.752" W
3	50° 57' 28.372" N	113° 53' 24.772" W
4	50° 57' 28.384" N	113° 53' 40.120" W
5	50° 57' 18.114" N	113° 53' 40.140" W
6	50° 57' 18.142" N	113° 54' 12.219" W
7	50° 57' 31.165" N	113° 54' 12.197" W
8	50° 57' 31.143" N	113° 53' 46.949" W



10600 and 10800 84 ST SE
251 INITIATIVE AV SE

Gross acres: 93.9 acres

City-owned land for temporary non-exclusive licensing

Park here when using the site

Date created: Thursday, April 11, 2024

DISCLAIMER
 All data and map images are provided on an "as is" basis and may be subject to periodic change without notification. The City of Calgary makes no warranty, representations or guarantees, either expressed or implied, as to the accuracy, completeness, timeliness or correctness of the data and map images. The City of Calgary does not accept responsibility or liability for any and all damages, loss or liabilities, whether direct, indirect or consequential, which may be contained in the data or map images or whether arising from any use or reliance on the data or map images by any person or entity.

By accessing this map, you accept this Disclaimer. If you do not wish to accept this Disclaimer, do not access the data or map images.