

Calgary



**Cycling Strategy
Annual Report
TT2016-0833**

Transportation Report to SPC on
Transportation and Transit
December 8, 2016



Previous Council Direction:

January 11, 2016 (TT2015-0851)

1. Receive this update for information and direct administration to return to the SPC on Transportation and Transit in December 2016 with an update.

Previous Council Direction:

Supporting policies:

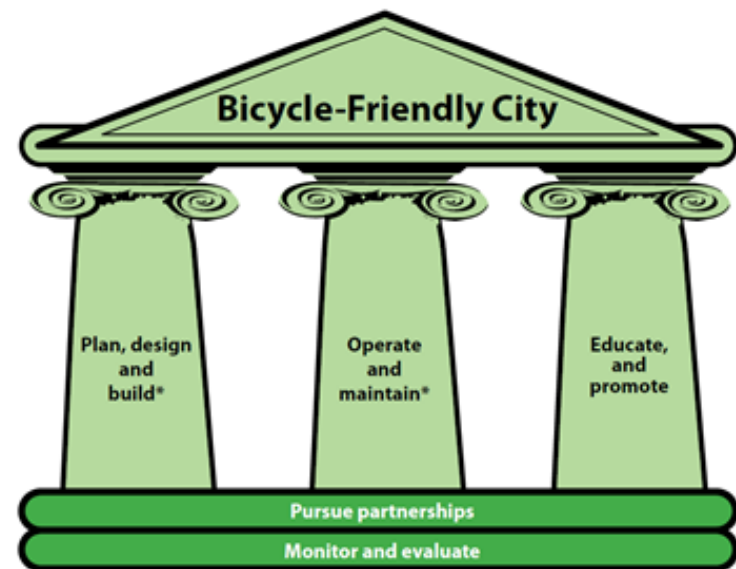
- 2000 Pathway and Bikeway Plan
- 2007 Sustainability Principles
- 2008 Bicycle Policy and Needs Report
- 2009 Calgary Transportation Plan
- **2011 Cycling Strategy**
- 2014 Complete Streets
- 2014 Centre City Cycle Track Pilot Network
- Action Plan: “A city that moves” priority



Cycling Strategy Background

To make Calgary into a bicycle friendly community

- Plan, design and build more on-street bikeways
- Maintain bikeways
- Educate, and promote cycling

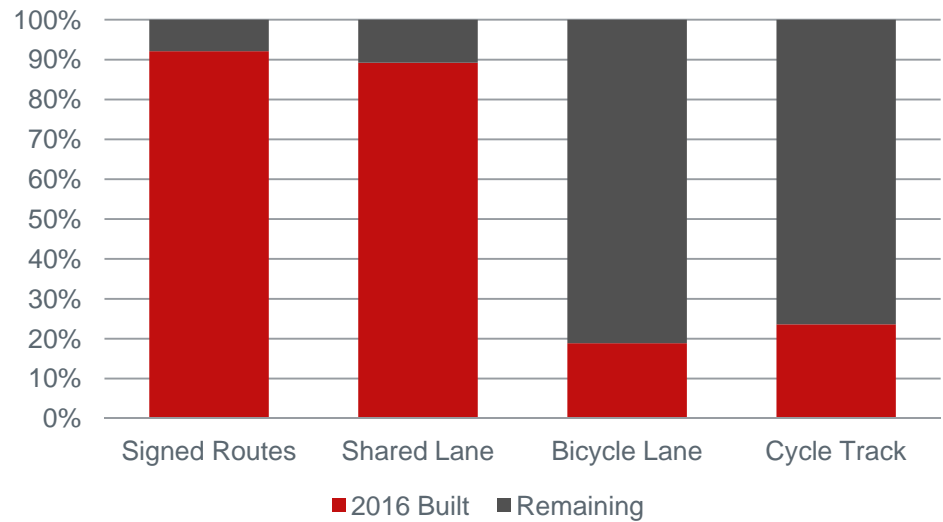


Cycling Strategy Highlights

2016

- 49 of 50 actions underway
- 11 KM of new or improved bikeway
 - 69 KM since 2011
- Substantial ridership increase

On-street bikeway targets for 2020



Not Just Bike Projects

Complete Streets Principles:

- Safer pedestrian crossings
- Maintain/Improve traffic operations
- Install missing sidewalk
- Traffic calming



Evaluating Potential Projects

Various factors considered, including:

- Identified in the Pathway/Bikeway Plan
- Connects or extends existing bikeway
- Proximity to LRT station or Activity Centre
- Addresses known safety or access issue
- Impacts to other modes minimal
- Community support
- Existing/Future use
- Cost/Benefit
- Opportunity



Improved Access

Memorial Drive N.W.



Improved Access

Richmond Road at 17 Avenue S.W.



Corridor Improvement

5 Avenue N.W.



New right turn lane to improve traffic flow



New bike lanes

Corridor Improvement

5 Avenue N.W.



Corridor Improvement

20 Street S.W.



Corridor Improvement

20 Street S.W.



Corridor Improvement

20 Street S.W.

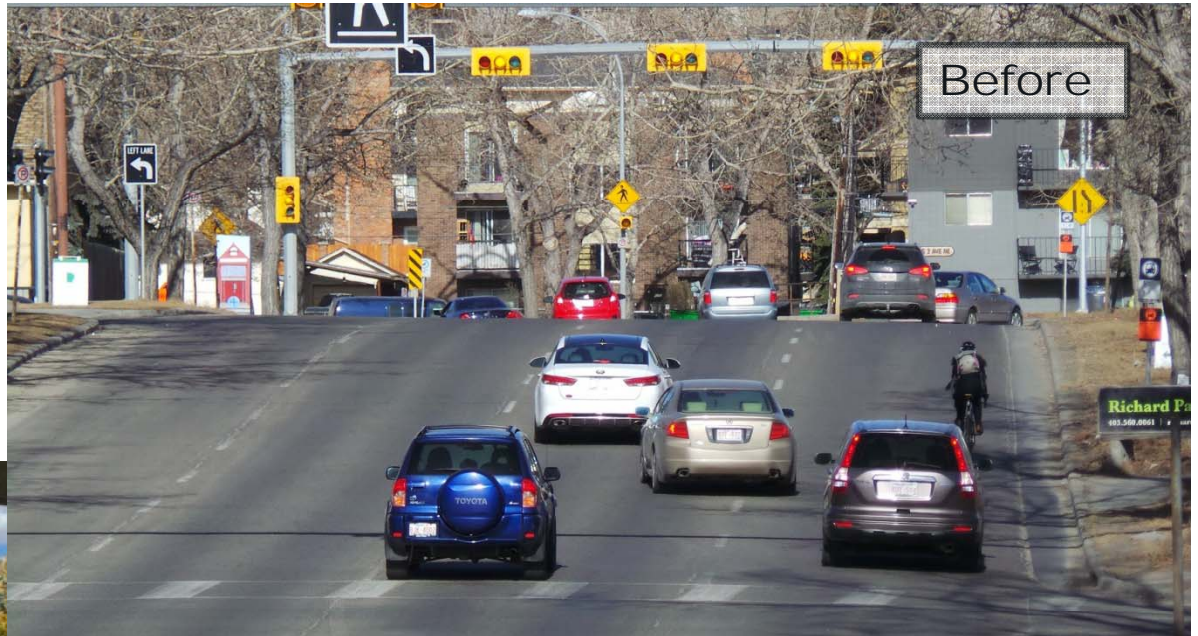


Drainage improved

Road widened to maintain parking/loading access by school

Corridor Improvement

Edmonton Trail N.E.



Corridor Improvement

Edmonton Trail N.E.



Corridor Improvement

Edmonton Trail N.E.

New bike lane / shared lane on 1 Avenue N

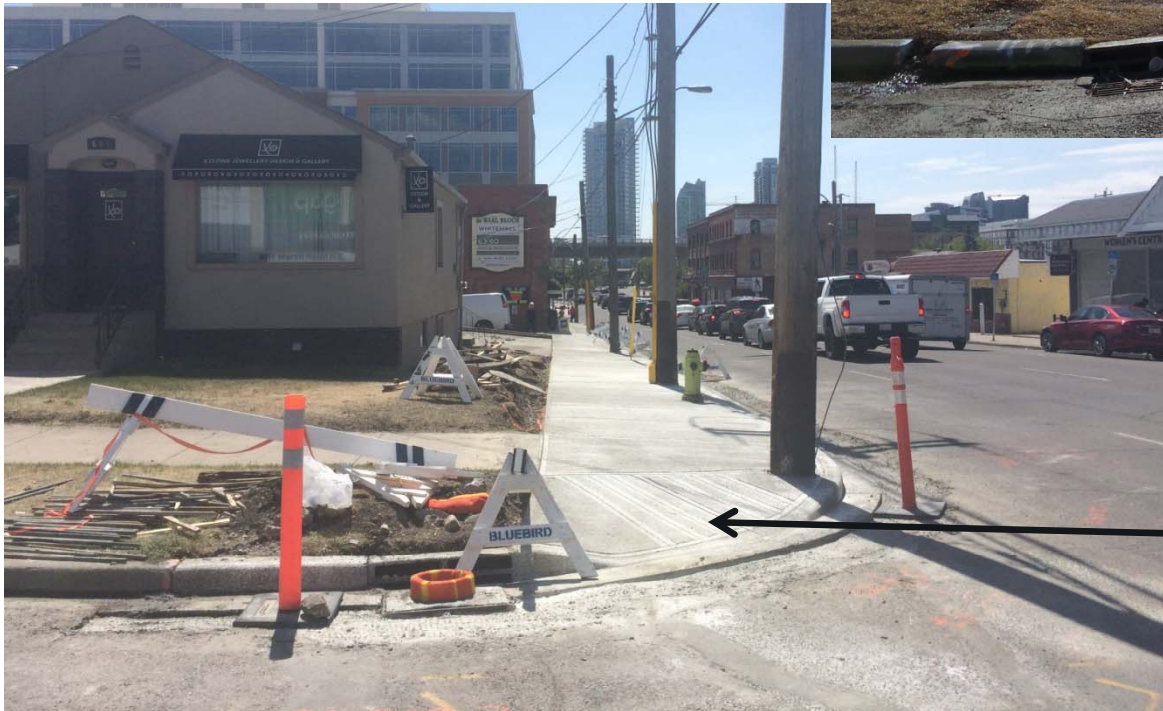


New left turn lane with separate phase from bikes



Corridor Improvement

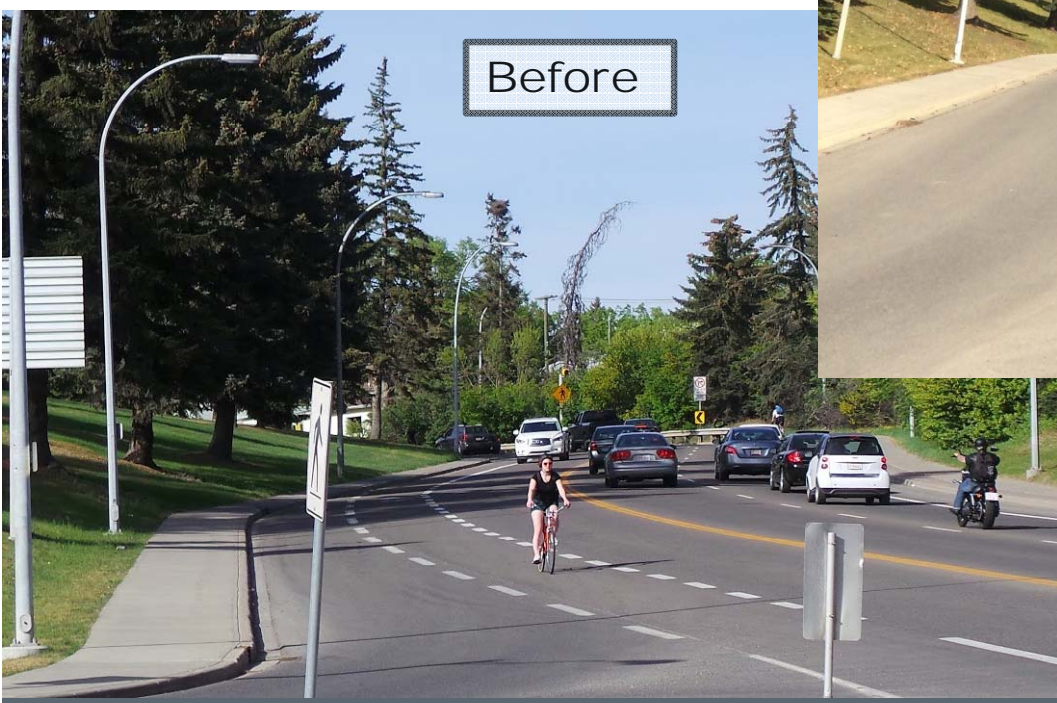
Edmonton Trail N.E.



New pedestrian ramps on 4 Street N.E.

Conflict Markings

10 Street N.W. near SAIT



Conflict Markings

Cambrian Drive N.W. near Commerce Street

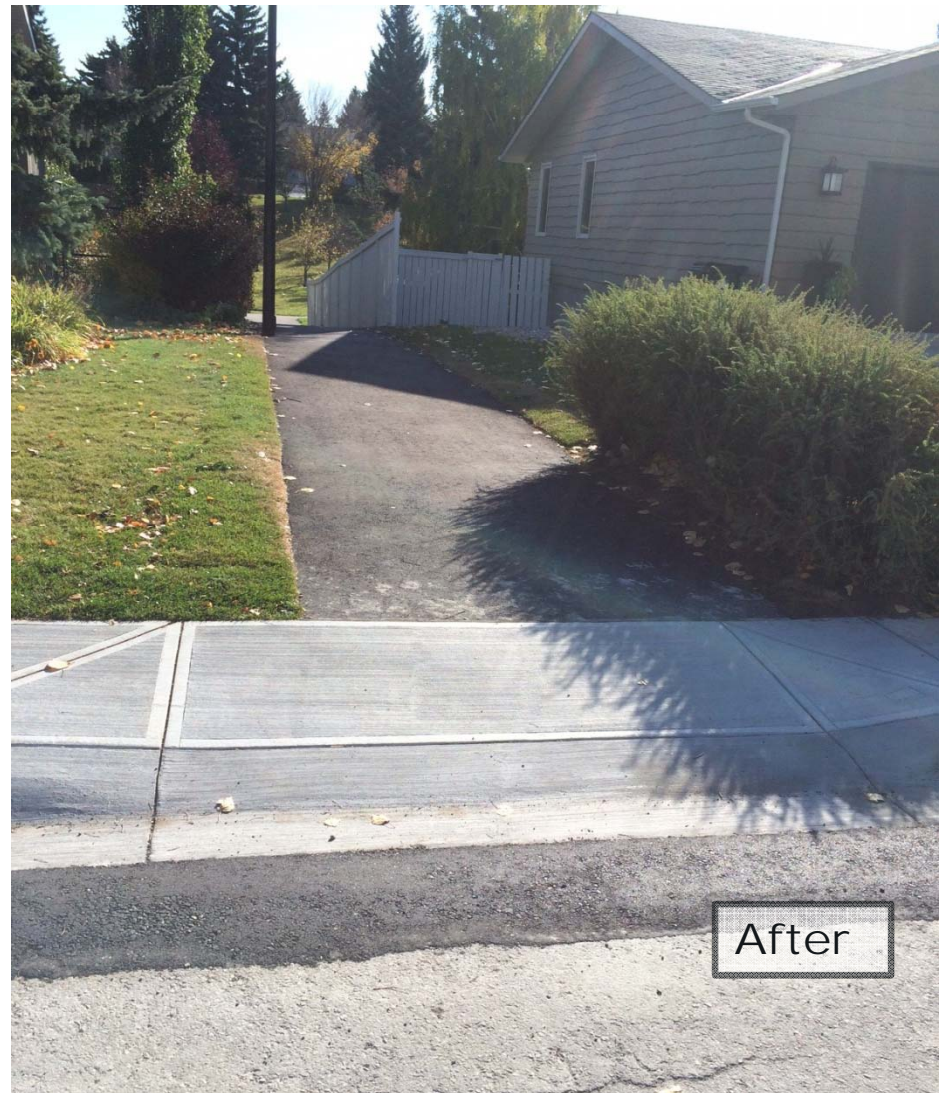


Conflict Markings



Improve Access

53 Street N.W.



Review and Improve

52 Street N.W.



Improve Access

Wider ramps @ Barlow Trail and 10 Avenue S.E.



Improved Access

Bike/pedestrian ramps



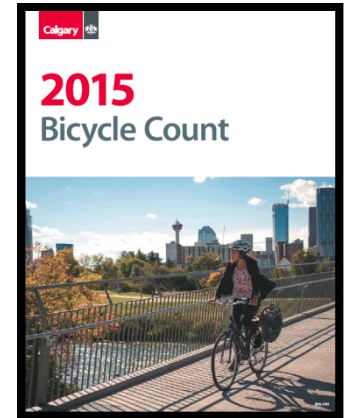
Winter Maintenance



Evaluation

Annual Bike Count Report

- 78 city wide locations
- 27,671 cyclist trips surveyed



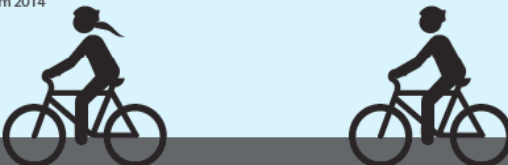
Top 15 cycling locations 2015 - 6 hour counts

84%
of cyclists
wear helmets

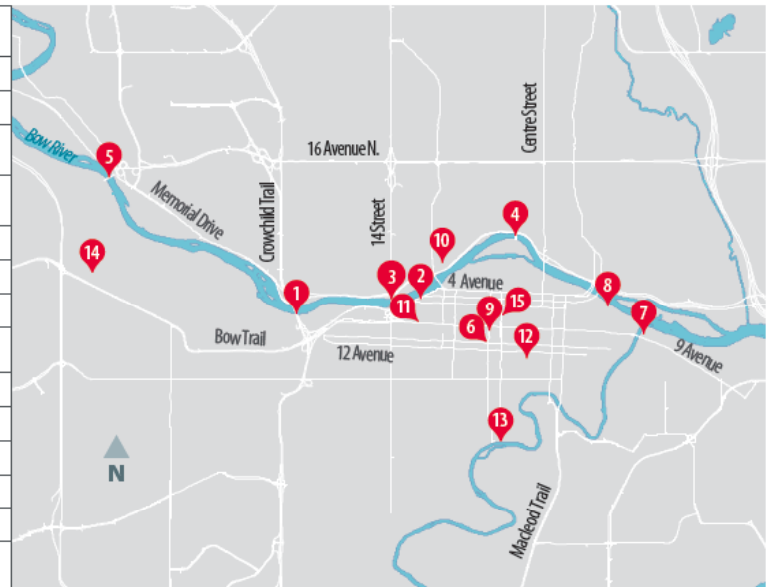


24% female cyclists
↑ 3% from 2014

76% male cyclists



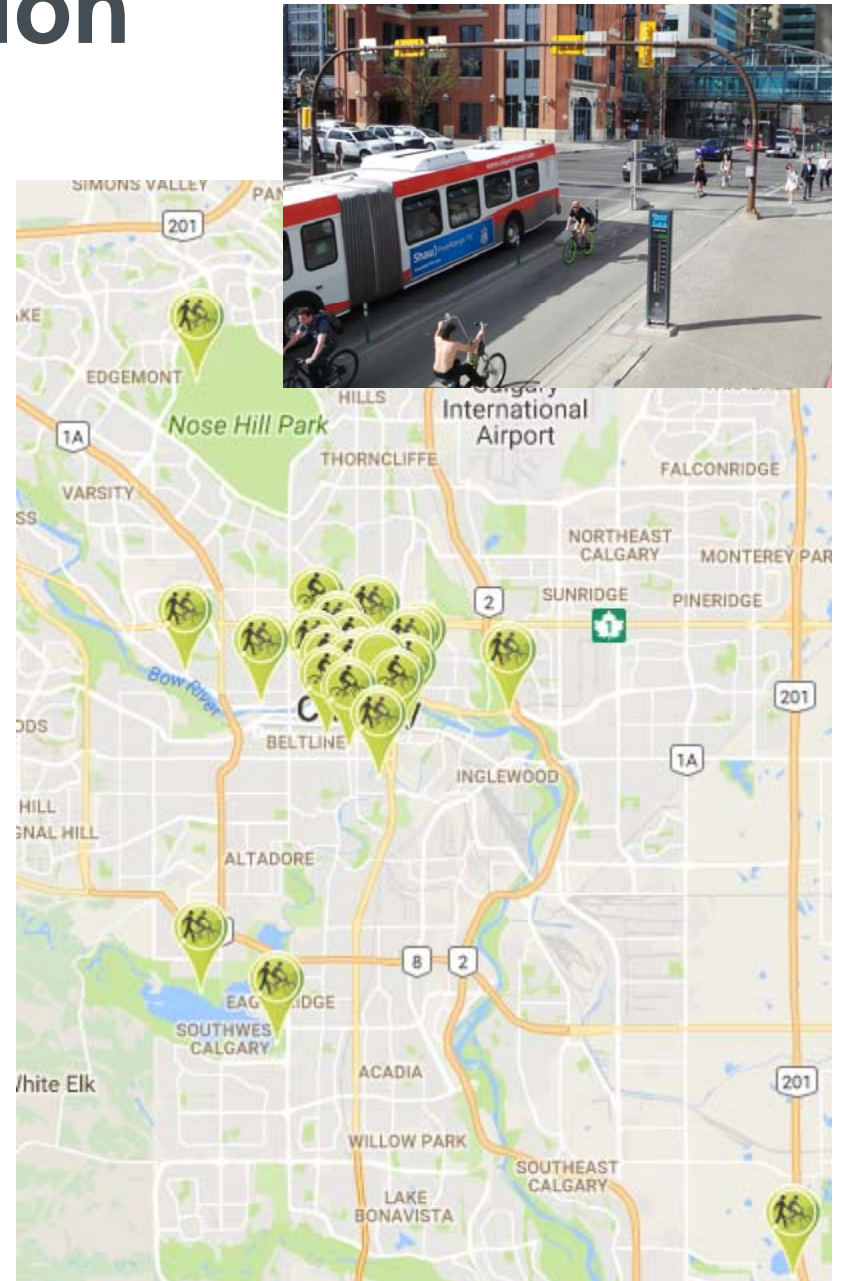
1	Bow River pathway at Crowchild Trail S.W.	2206
2	Bow River Pathway and 11 Street S.W.	2058
3	Bow River pathway and 14 Street N.W.	1769
4	Prince's Island Bridge over Memorial Drive N.W.	1142
5	Harry Boothman Bridge over Bow River N.W. (At Edworthy Park)	1117
6	5 Street and 10 Avenue S.W.	856
7	8 Street and 8 Avenue S.E.	817
8	5 Street and Riverfront Avenue S.E.	780
9	5 Street S.W. cycle track at the CPR underpass	755
10	9A Street and 3 Avenue N.W.	712
11	11 Street and 8 Avenue S.W.	688
12	2 Street and 13 Avenue S.W.	670
13	Elbow River pathway at 4 Street S.W.	650
14	Edworthy Street and Spruce Drive S.W.	649
15	8 Avenue S.W. west of 3 Street S.W. (Cycle Track)	606



Evaluation

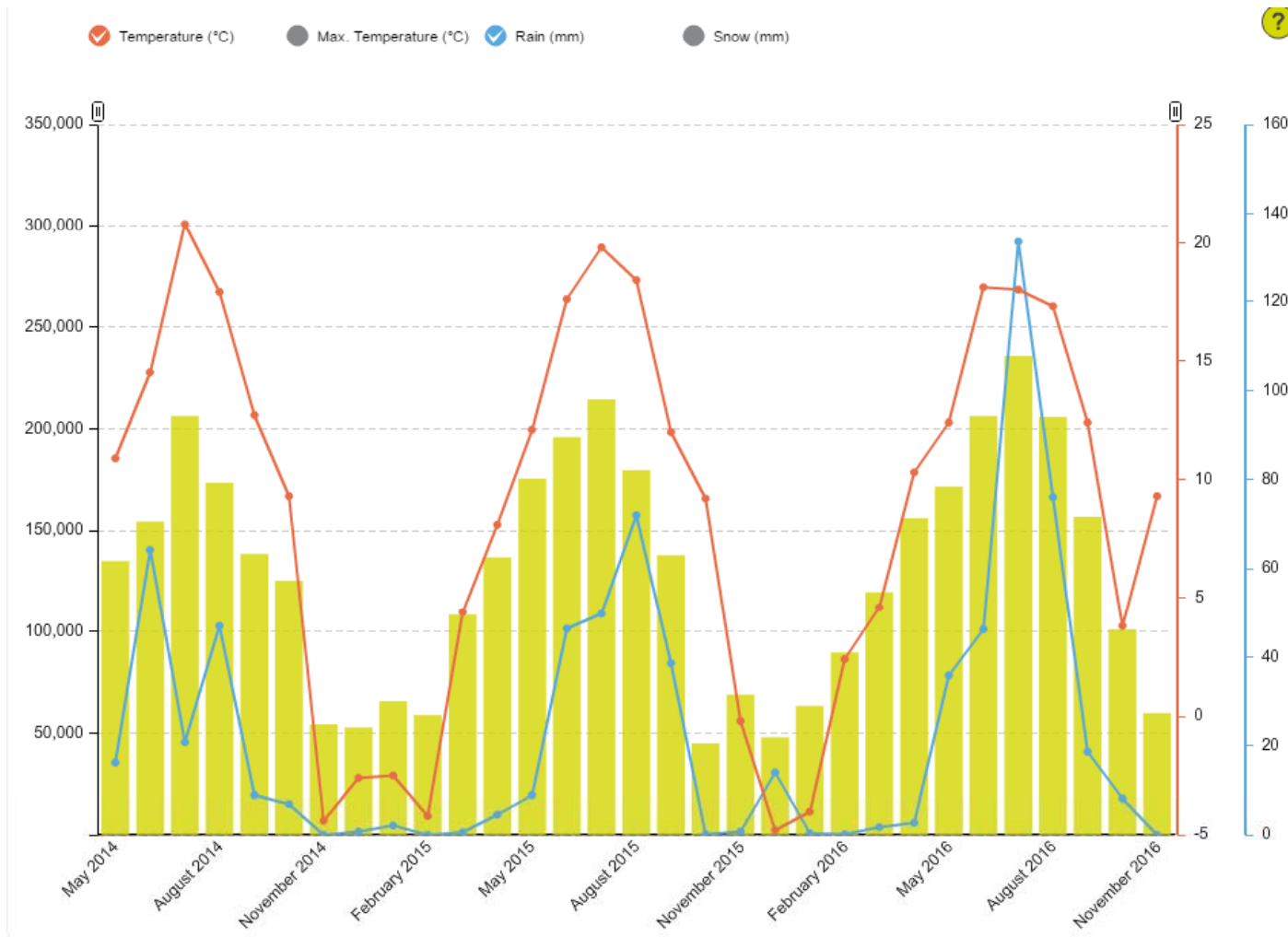
Automated Counters

- 25 permanent devices on website (between Transportation and Parks)
- Tube counters also used



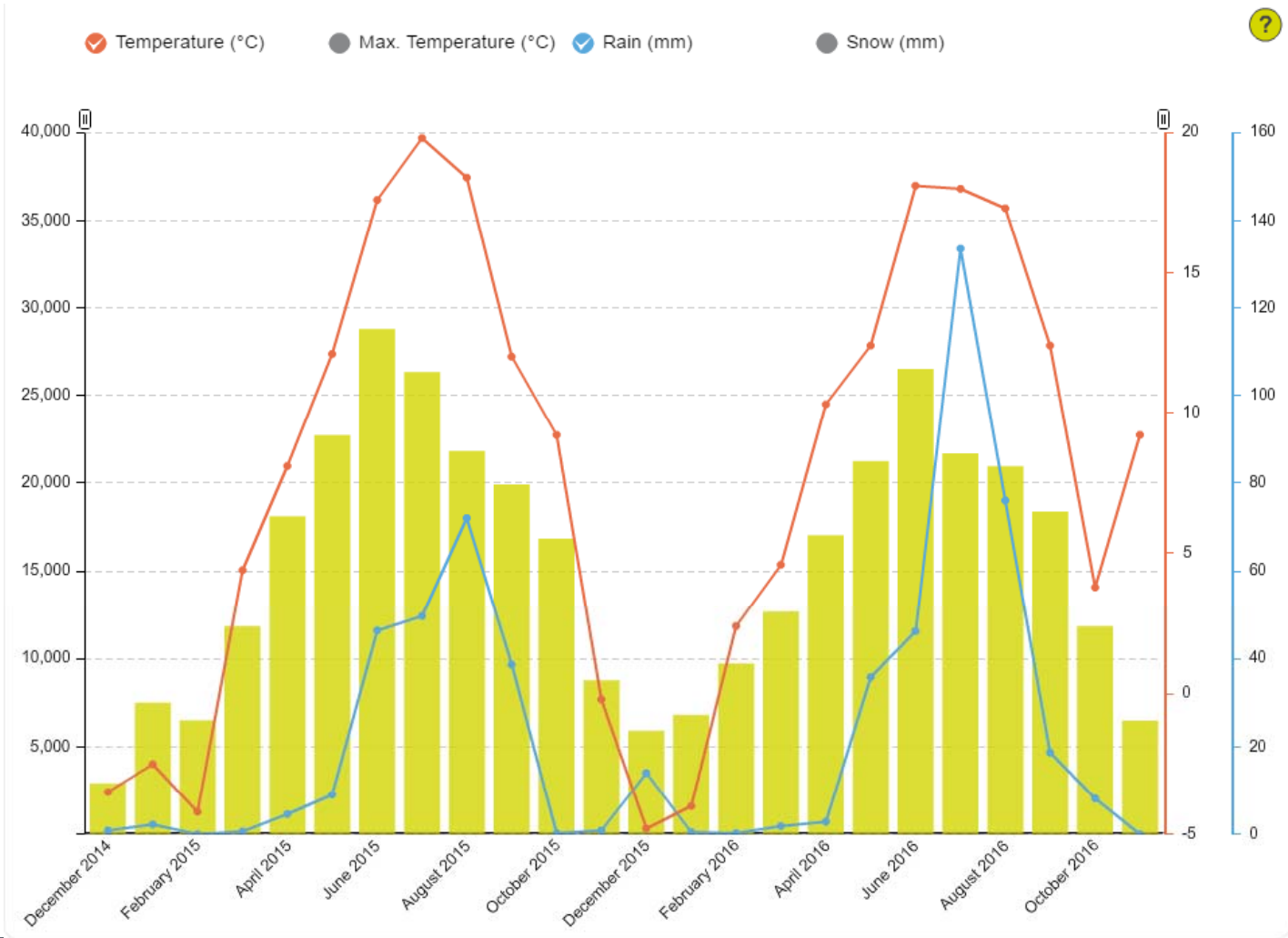
Evaluation

3 Years of Peace Bridge Data



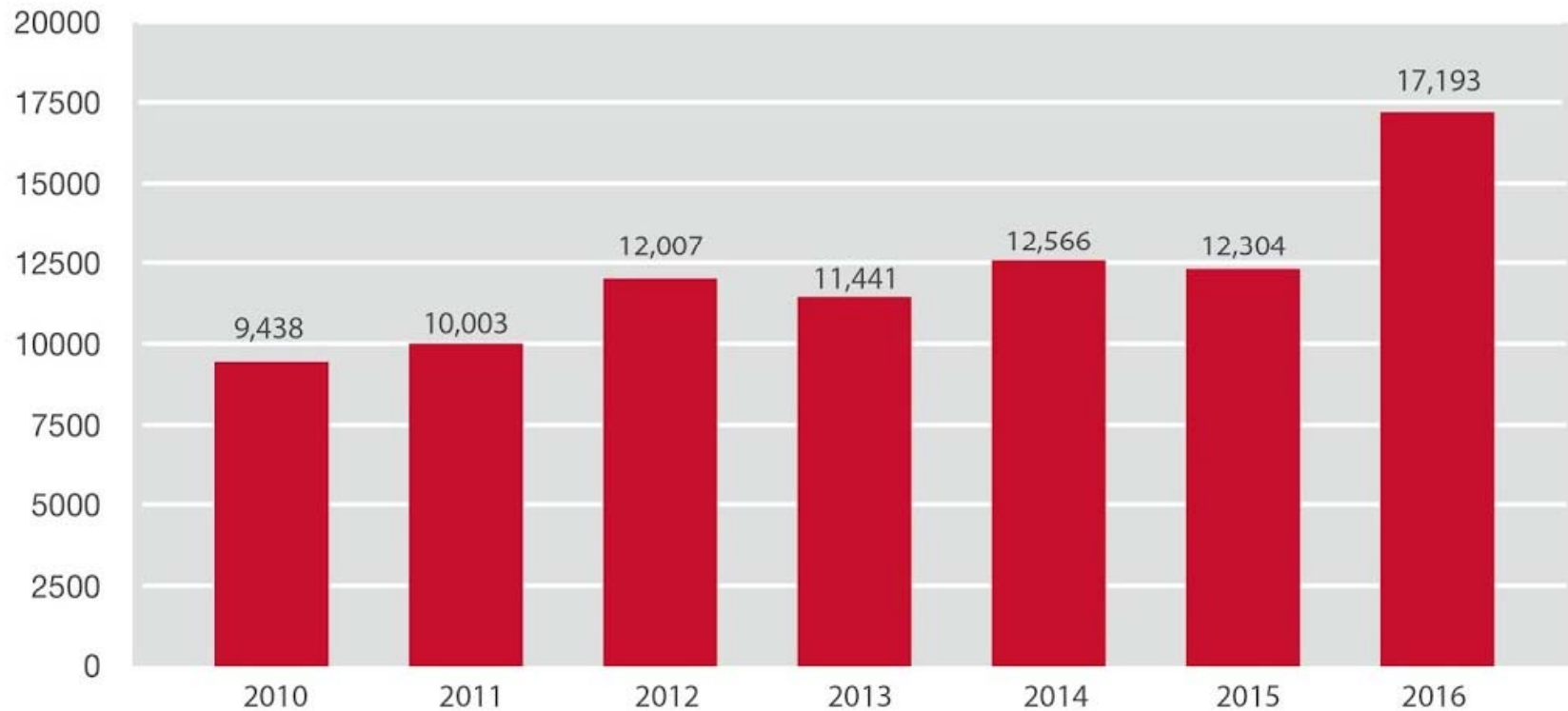
Evaluation

2 Years of 7 Street S.W. Data





Daily Downtown Bicycle Trips

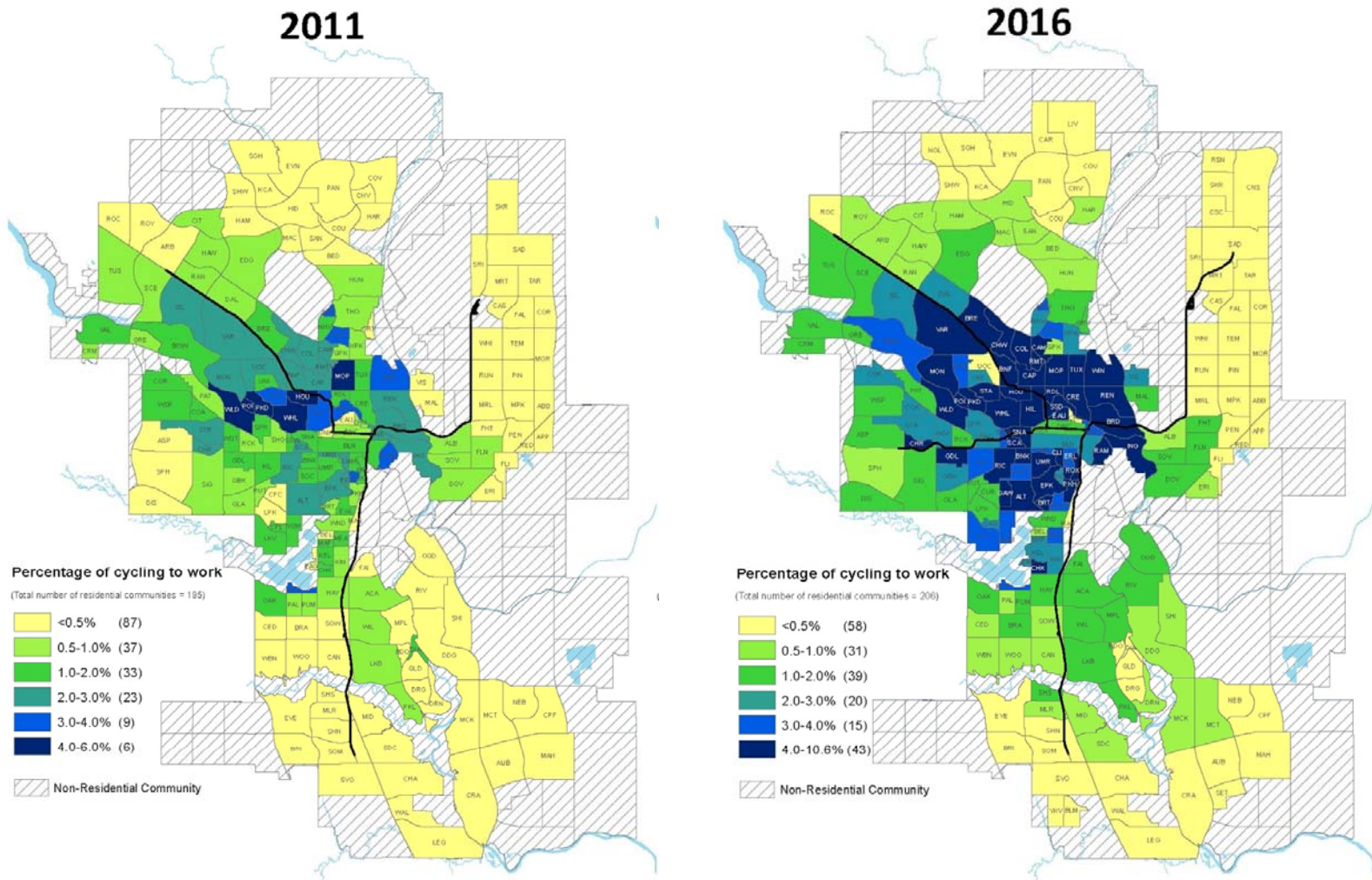


Source: The City of Calgary Central Business District Cordon Count. The total number of bicycles entering and exiting the downtown are counted annually on a weekday in May from 6 a.m. to 10 p.m.

calgary.ca/bikedata

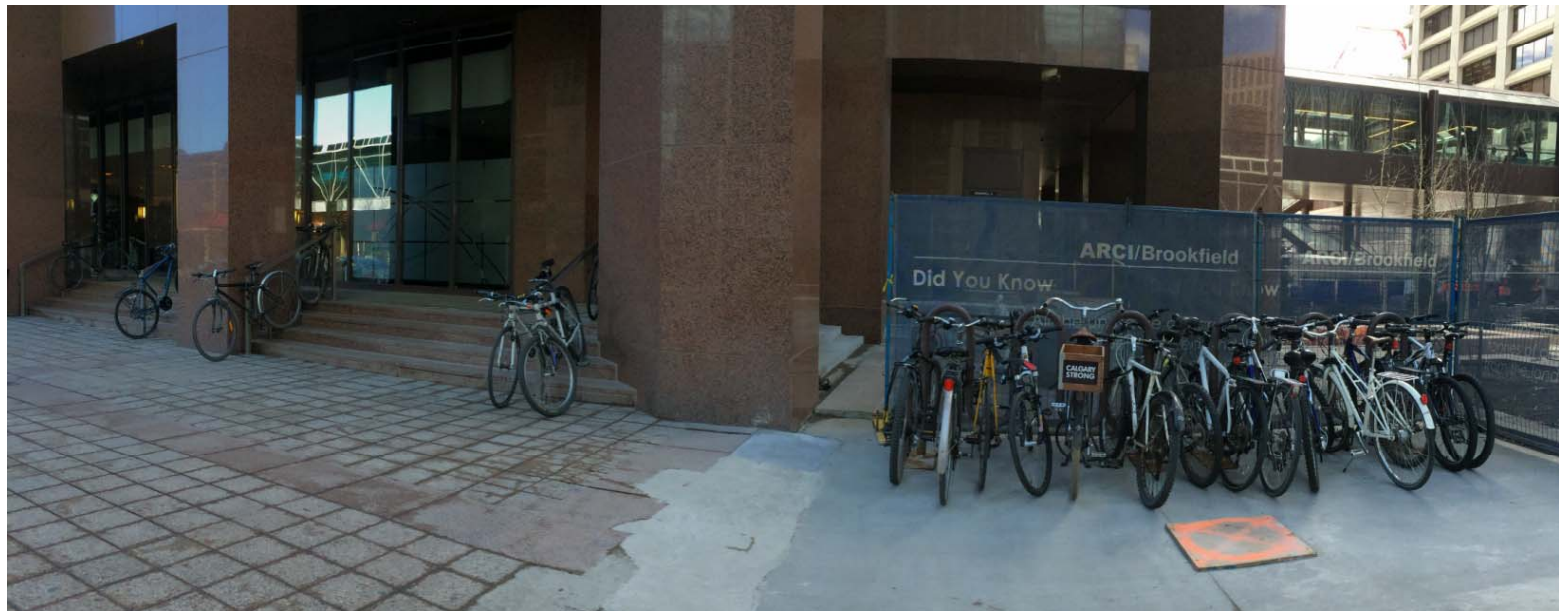
Evaluation

Doubling of people commuting by bike



Bike Parking

- Add more bike parking to address growing demands
- Focus on:
 - Downtown corridors
 - Community Centre's
 - 311 requests
 - BRZ's



Bike Parking

- 436 Spaces added in 2016



Education

Highlights:

- Bike Ambassador team had 12,000 interactions with Cycle Track Pilot
- Move Together Campaign
- How-to materials created for new projects
- Education session for Transit operators
- Updated Pathway & Bikeway Map



Encouragement

Highlights:

- Summer and winter Bike 2 Work Day
- Winter cycling festival
- Bike Month during June
- Outreach at various events and office towers
- Bike to the Zoo Day



Recommendation

That the SPC on Transportation and Transit recommend that Council:

- Receive this update for information and direct administration to return to SPC on Transportation and Transit in December 2017 with an update.

