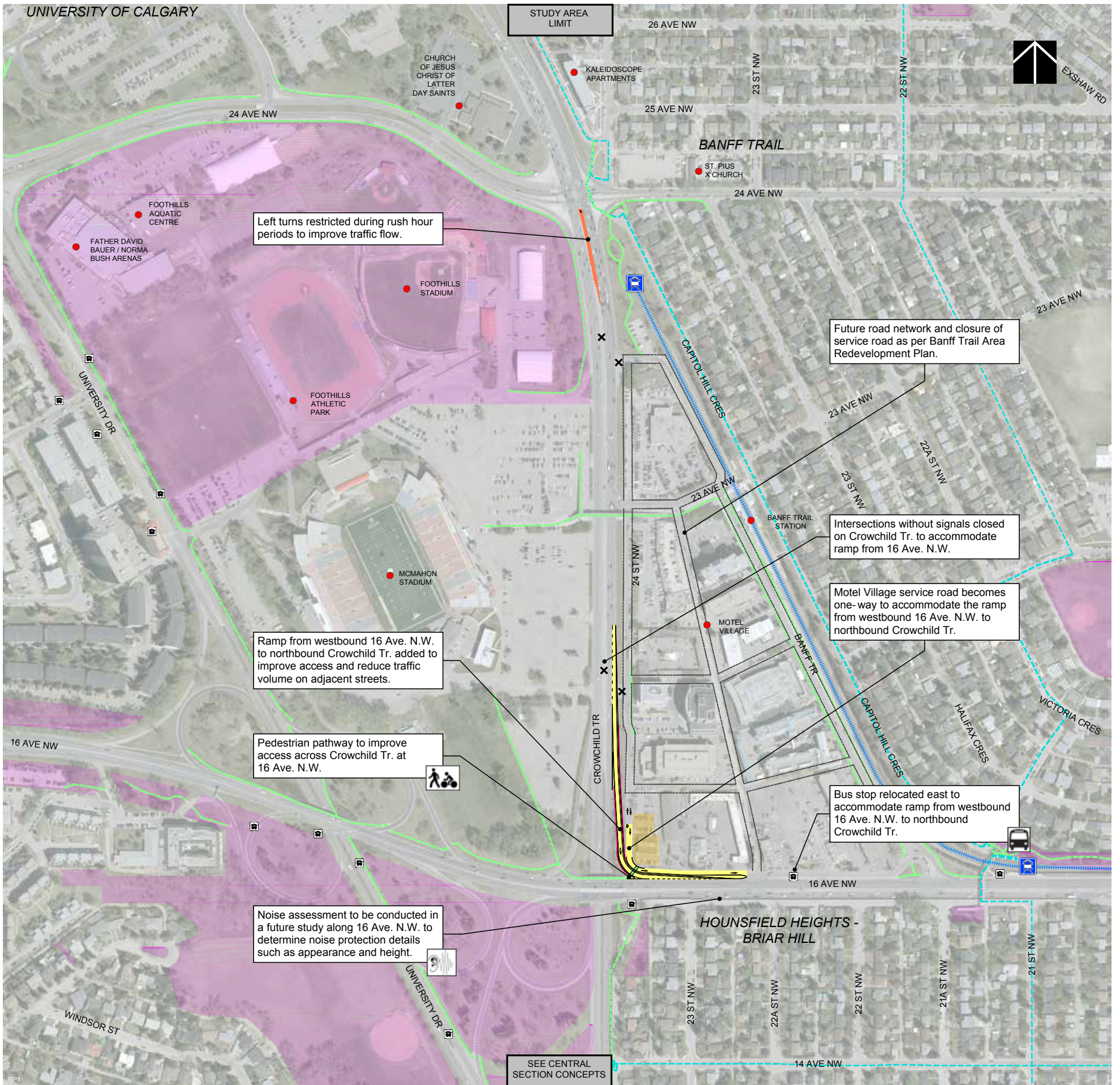




# Optimization between 16 Ave. N.W. and 24 Ave. N.W.

## Short-Medium Term Improvements



Left turns restricted during rush hour periods to improve traffic flow.

Future road network and closure of service road as per Banff Trail Area Redevelopment Plan.

Intersections without signals closed on Crowchild Tr. to accommodate ramp from 16 Ave. N.W.

Motel Village service road becomes one-way to accommodate the ramp from westbound 16 Ave. N.W. to northbound Crowchild Tr.

Ramp from westbound 16 Ave. N.W. to northbound Crowchild Tr. added to improve access and reduce traffic volume on adjacent streets.

Pedestrian pathway to improve access across Crowchild Tr. at 16 Ave. N.W.

Bus stop relocated east to accommodate ramp from westbound 16 Ave. N.W. to northbound Crowchild Tr.

Noise assessment to be conducted in a future study along 16 Ave. N.W. to determine noise protection details such as appearance and height.

SEE CENTRAL SECTION CONCEPTS

**Legend**

- |                 |                      |                               |                                       |                                 |
|-----------------|----------------------|-------------------------------|---------------------------------------|---------------------------------|
| Proposed road   | Road closures        | Proposed pathway/sidewalk     | Potential property impacts - Building | Proposed bus stop               |
| Proposed bridge | Lane count/direction | Proposed pedestrian bridge    | Potential property impacts - Grading  | Existing LRT                    |
| Traffic signal  | Proposed wall        | Proposed bike route           | City owned property                   | Pedestrian / bike opportunities |
|                 |                      | Existing pathway / sidewalk   | Proposed park space                   | Parks opportunities             |
|                 |                      | Existing pedestrian bridge    | Community places of interest          | Noise protection opportunities  |
|                 |                      | Existing on street bike route |                                       |                                 |



## Phase 4 - Concept Evaluation Workshop Concept Scorecard

Review the concepts and evaluate how well each concept meets the 11 project goals:

1 = Does not meet goal; 2 = Meets goal somewhat; or 3 = Meets goal well.

Project team members are available at your table if you have any questions about the concepts or exercise.

Key Principle	Project Goal	Optimization between 16 Ave. N.W. and 24 Ave. N.W. (Short-Medium Term Improvements)	
		Evaluation of: Optimization	Comments
<b>Key Principle #1:</b> Maintain and Enhance Bordering Communities	Prioritize concepts that fit within existing City-owned lands over concepts that require purchasing private property.		
	Address how changes to Crowchild Trail affect traffic patterns and safety in bordering communities.		
	Recommend current and visually-pleasing ways to reduce traffic noise along Crowchild Trail.		
	Enhance green spaces, park spaces and pathways along the Crowchild Trail corridor.		
<b>Key Principle #2:</b> Improve Travel Along the Corridor	Provide continuous pedestrian and cycling routes nearby, but not on, Crowchild Trail to connect major destinations along the corridor.		
	Provide for convenient, high capacity, high frequency bus service along Crowchild Trail.		
	Enhance the Crowchild Trail corridor to better fulfill its role as a primary route for delivery of emergency response and health services, and for connecting to major destinations.		
	Provide for more continuous traffic flow on Crowchild Trail that addresses bottleneck points and traffic weaving.		
<b>Key Principle #3:</b> Improve Mobility Across the Corridor	Enhance the safety and accessibility of transit stops throughout the Crowchild Trail corridor.		
	Enhance pedestrian and cycling access across Crowchild Trail, both in the number and quality of crossings.		
	Ensure alternate access is provided for bordering communities and businesses if access to Crowchild Trail is removed or changed.		
<b>Project Team Evaluation:</b> City Policy	Support community redevelopment by aligning the Crowchild Trail corridor with community planning policies including the Municipal Development Plan, Area Redevelopment Plans, and the Main Streets initiative.	3	The new ramp from 16 Ave. N.W. to Crowchild Tr. is essential to support redevelopment of Motel Village under the Banff Trail Station Area Redevelopment Plan.
	Support Crowchild Trail's role in the Calgary Transportation Plan as a critical network connection between north and south Calgary, and a vital link to east-west routes.	3	The new ramp from 16 Ave. N.W. to Crowchild Tr. improves access between two important roads and reduces traffic volume on local streets such as Banff Tr. and 19 St. N.W.

### Description of Evaluation



Does not meet goal



Meets goal somewhat



Meets goal well