

Install a YardSmart Garden Bed

Native Plant Meadow

A step-by-step guide on planting a beautiful and low maintenance garden bed with native plants.

This bed has been developed in partnership with The Calgary Horticultural Society using plants that thrive in Calgary. Once established, this garden bed will take little time, effort and water to maintain.

This beautiful garden is easy to care for and offers an homage to our native prairie landscapes. The diverse mix of grasses and flowering plants provide food and habitat to our native birds, insects and butterflies. Amongst a sea of native grasses, flowering perennials will start blooming in early spring, carrying through summer and into fall. This lovely little meadow is made up of tough native plants providing colour and texture in all four seasons.

Flip over for installation instructions and information on planting, watering and maintenance. >>

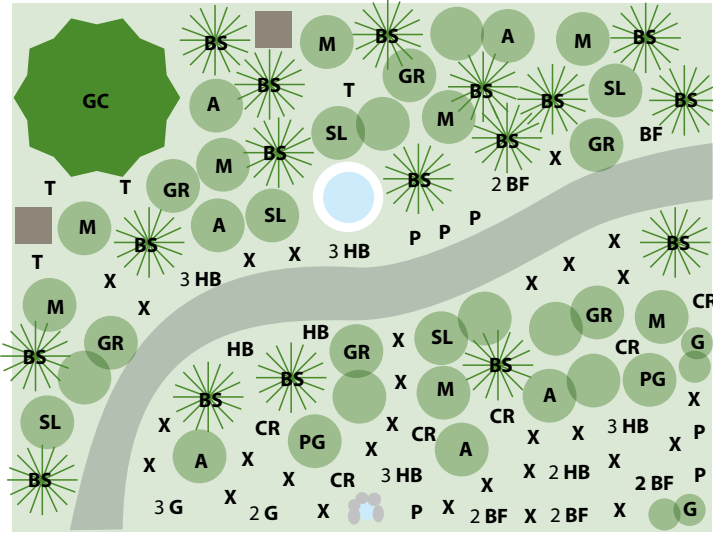


In partnership with

CALGARY
HORTICULTURAL
SOCIETY

Enjoy a garden bed that will contribute to the beauty and resiliency of your yard and community

Planting native wildflowers contributes to a healthy landscape and mitigates the impacts of climate change. Common native wildflowers can be found in garden centres and there are local native plant suppliers that specialize in these species. When planning your garden, call ahead of time to see what native plants are available. Consider including a bird bath, bee condo and insect water dish with rocks for landing pads.



Based on a garden 4 m (13'1") by 3 m (9'10")

Flower name Quantity

CR Prairie Crocus 6



G Prairie Smoke 6



T Buffalo Bean 4



BF Blanket Flower 9



HB Harebell 16



PG Sticky Purple Geranium 2



P Smooth Beard Tongue 6



SL Silver Lupine 7



Tips for successful planting

Before you begin:

- Use the YardSmart Planning and Design Guide at calgary.ca/YardSmart to ensure this design suits your yard conditions.
- Use a good depth of quality soil.

3 Ways to Remove Lawn

1. In fall, smother the lawn by covering with several layers of damp newspaper, or cardboard. Top with compost or soil to keep wet. Plant in the springtime.
2. Dig up the sod, flip it over so the grass is facing downwards, and cover with soil so no grass shows. Top with compost or new soil before planting.
3. Put a 10 cm layer of compost and new soil on top of the grass to smother it. Ideally, wait a few weeks for grass to die, or plant right away ensuring there is no grass exposed after planting.

How to install a garden bed

1. Ensure the plants and the area to be planted are watered well.
2. Lay the plants out on the prepared bed following the planting map provided. Space them according to the tags' description of plant width at maturity.
3. Dig the holes about twice the width of the pot and the same depth.
4. Remove the plant from its pot and carefully loosen and remove some of the soil so the roots can be spread outwards.

5. Place plant in hole and fill with soil. Ensure the base of the plant stem is level with the ground. Water well.
6. Add a layer of mulch, keeping it away from the stem of the plant.

Water requirements

- Keep perennials well-watered for the first year or two (approx. 2.5 cm water/week or until soil is moist to the base of the root system, 1-2 inches down).
- Shrubs need regular watering every week for the first 2-3 years. Use a drip hose spiraled around the root area. 15-20 minutes is sufficient.
- In following years, all plants will be drought tolerant and only need water after 2-3 weeks of hot dry weather with little to no rainfall.

Reminders

- Keep soil covered with mulch and remove weeds.
- Fast growing plants usually require division every 3-5 years.
- How to winterize:
 - Leave perennial foliage until spring to catch snow and provide food and shelter for birds and beneficial insects.
 - Fallen leaves make great mulch so can be left in garden beds.
 - For shrubs, water well in the fall until the ground freezes.

Learn more tips at calgary.ca/YardSmart

M Rocky Mountain Beebalm 8



A Smooth Aster 8



GR Stiff Goldenrod 9



GC Golden Currant 1



BS Little Bluestem 17



X Rocky Mountain Fescue 29

